

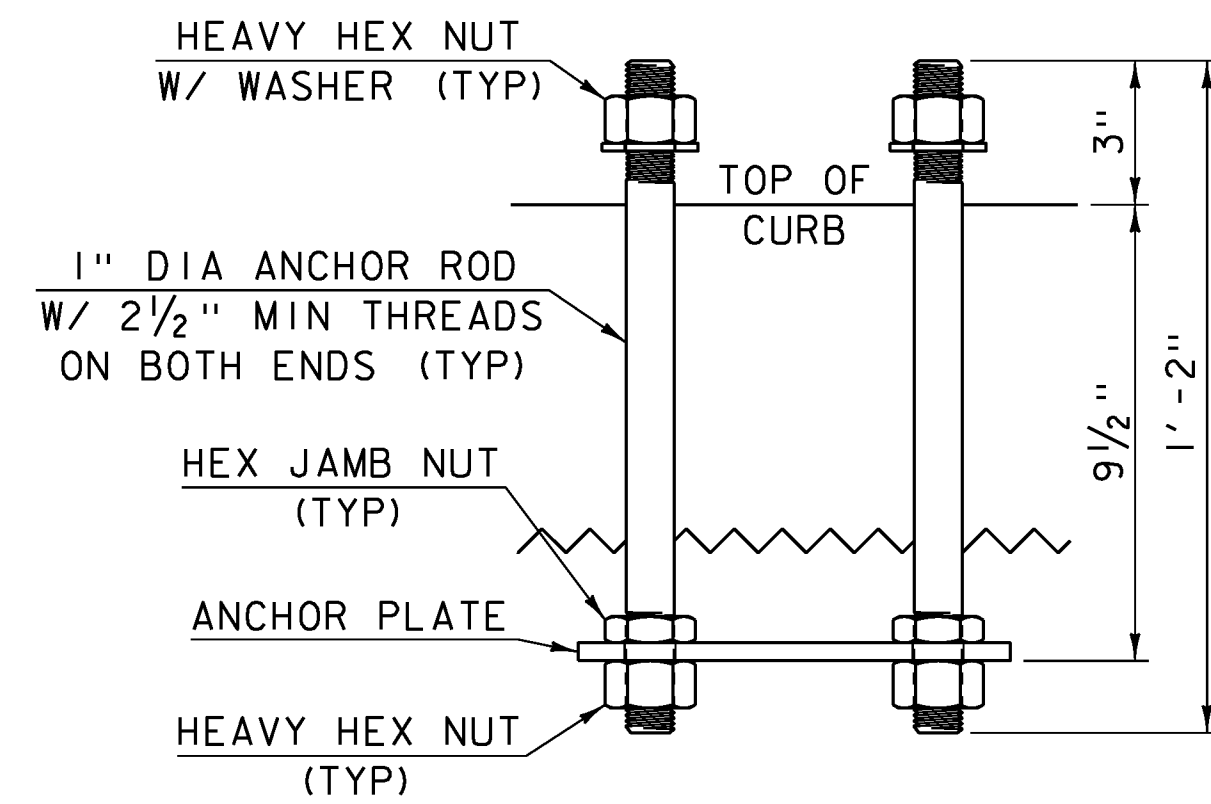
5/8" DIA TAPPED HOLES IN SPLICE TUBES.

1/8" X 3/2" SLOTTED HOLES IN RAIL TUBES AT EXPANSION JOINTS.

3/4" DIA HOLES IN RAIL TUBES AT FIXED JOINTS.

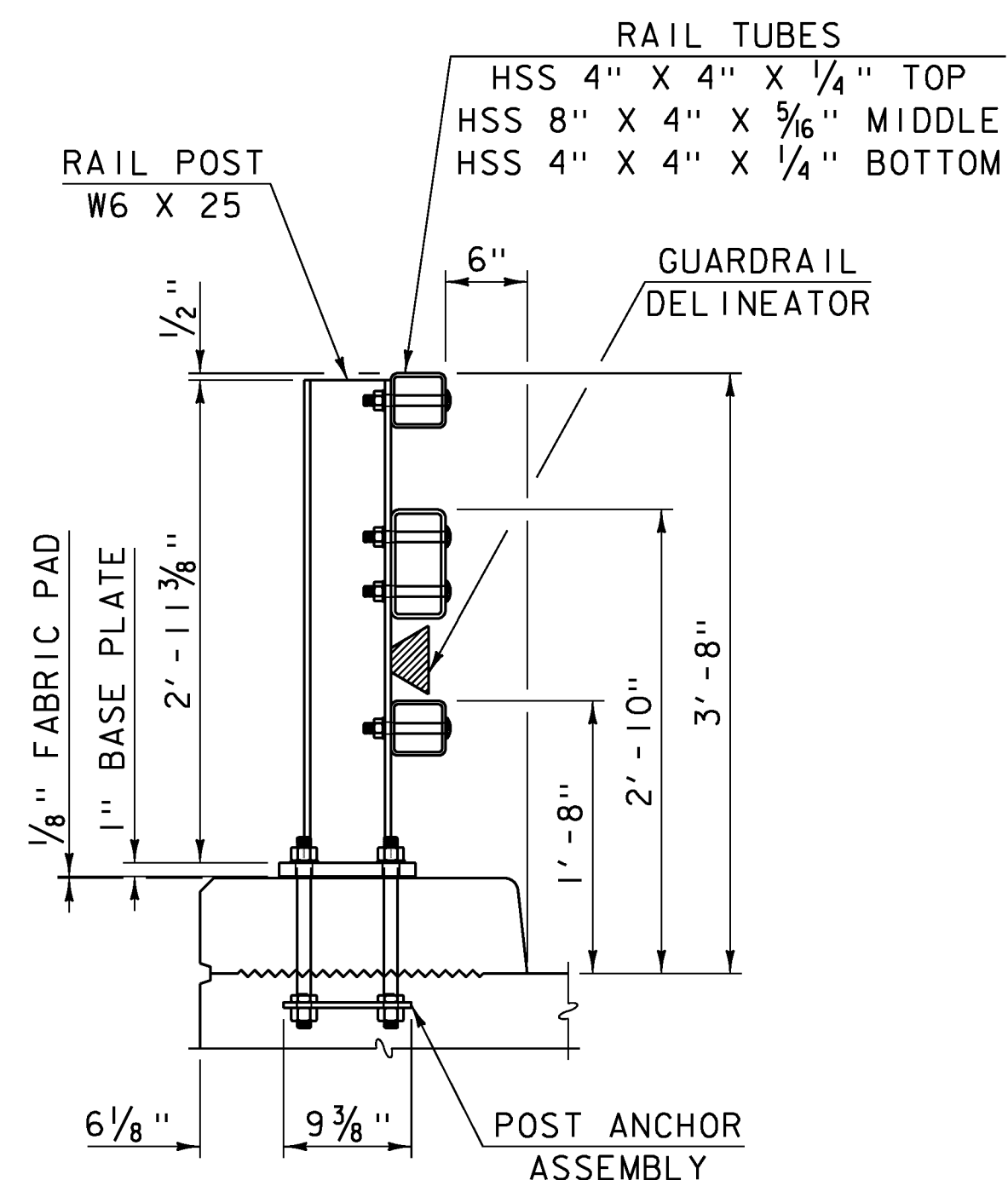
### RAIL SPLICE SECTION

SCALE: 3" = 1'-0"



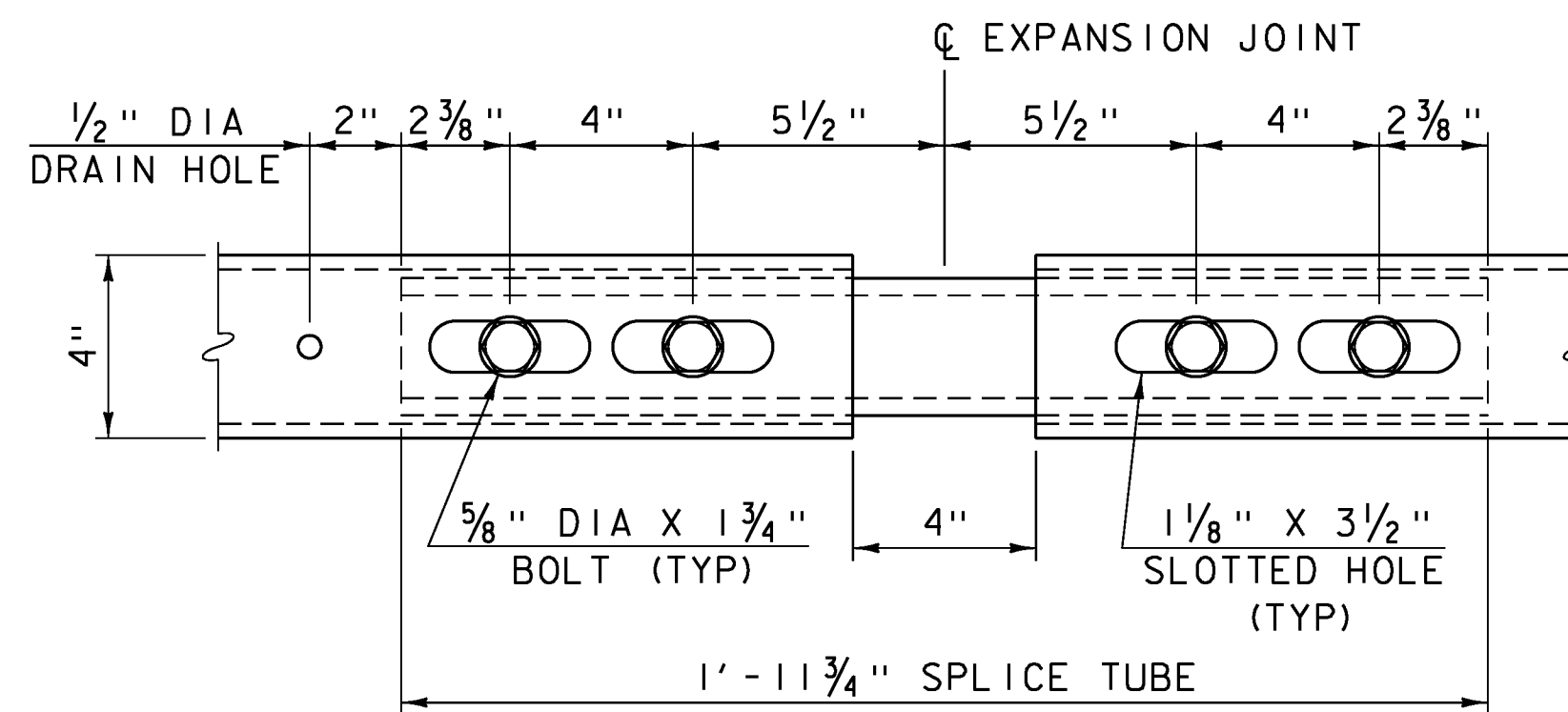
### POST ANCHOR ASSEMBLY

SCALE: 3" = 1'-0"



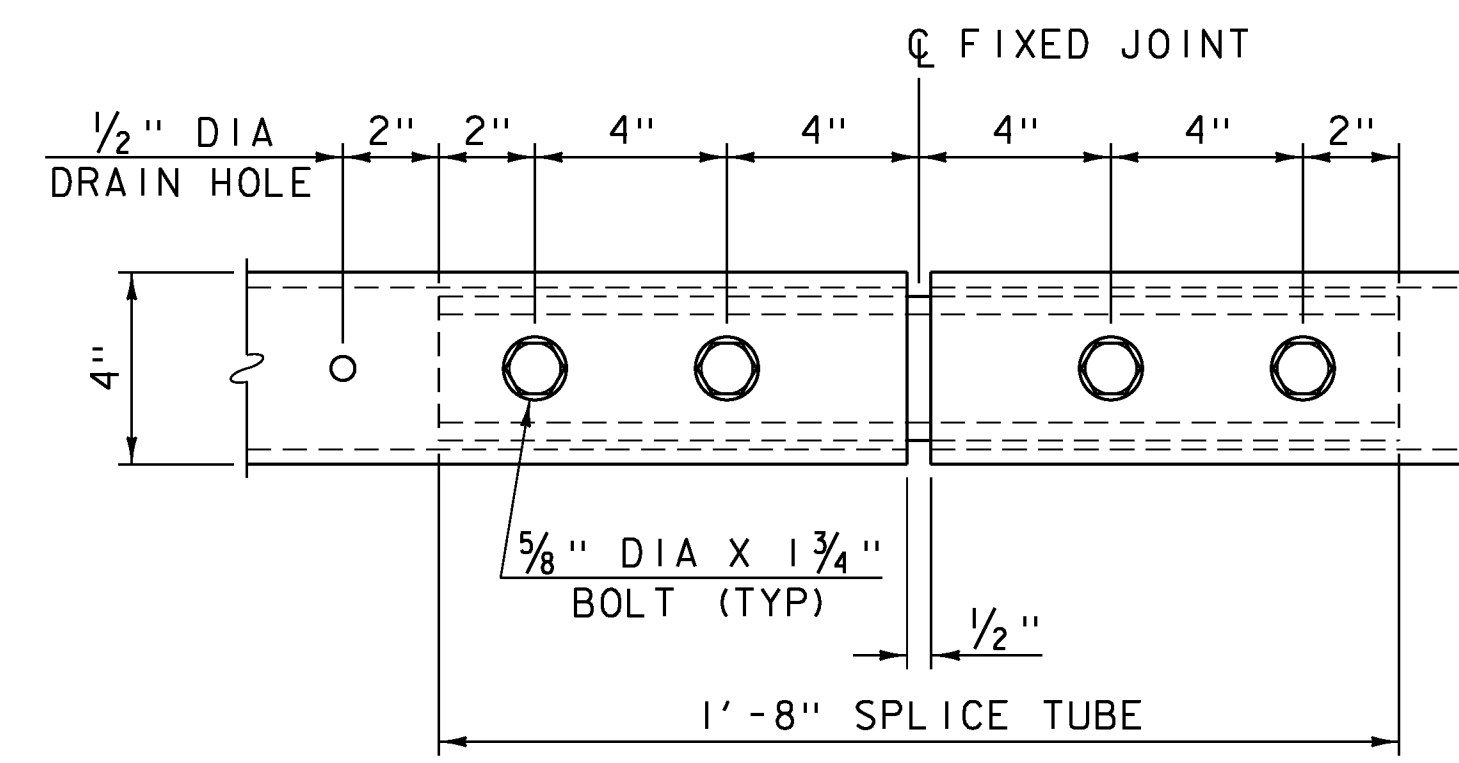
### POST SECTION

SCALE: 1" = 1'-0"



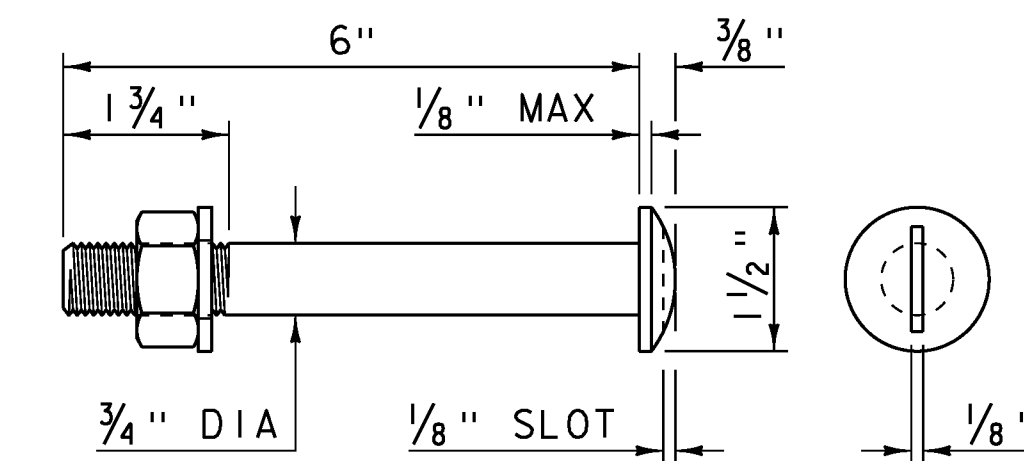
### EXPANSION JOINT DETAIL

SCALE: 3" = 1'-0"  
(BOTTOM VIEW)



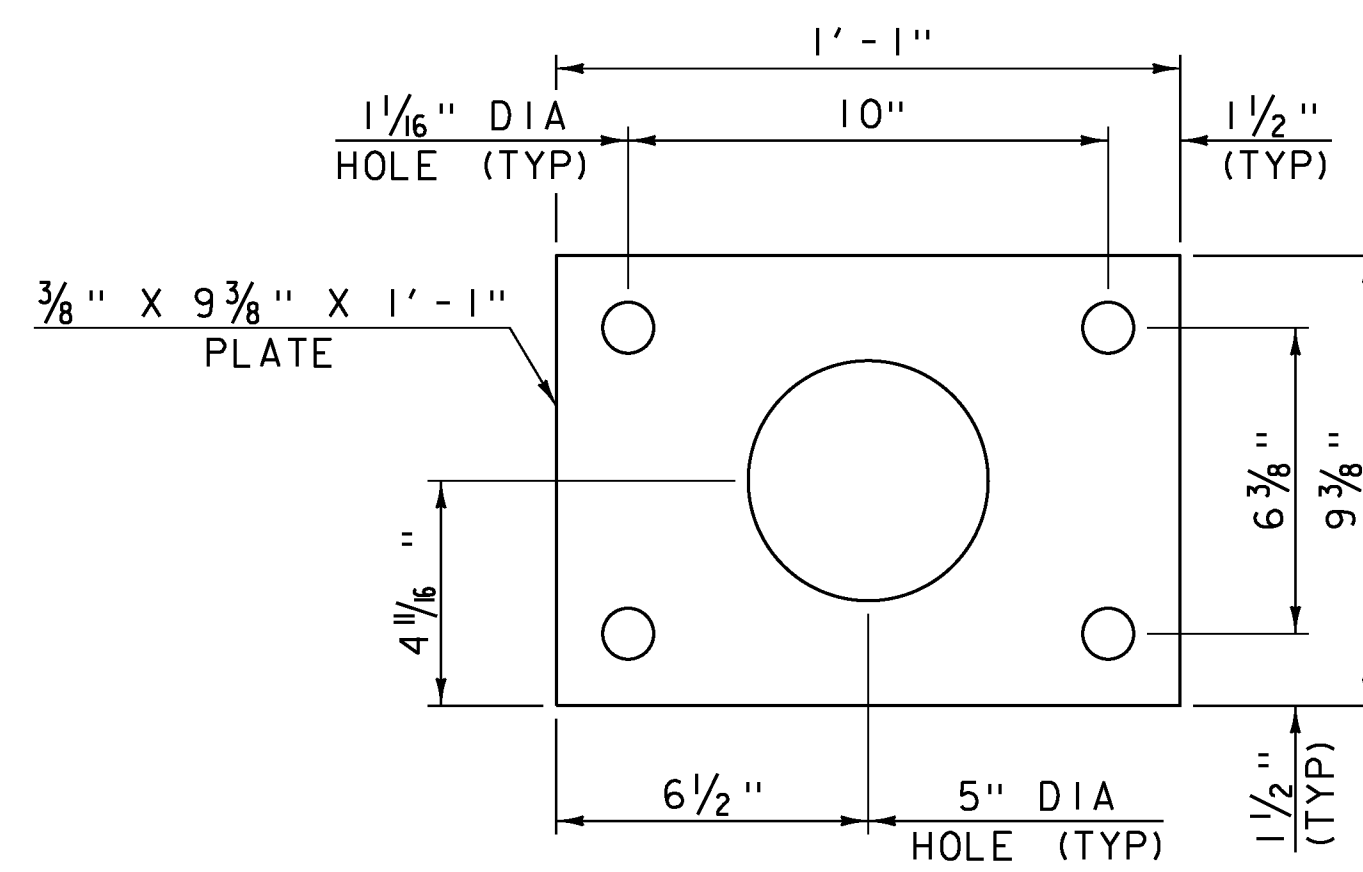
### FIXED JOINT DETAIL

SCALE: 3" = 1'-0"  
(BOTTOM VIEW)



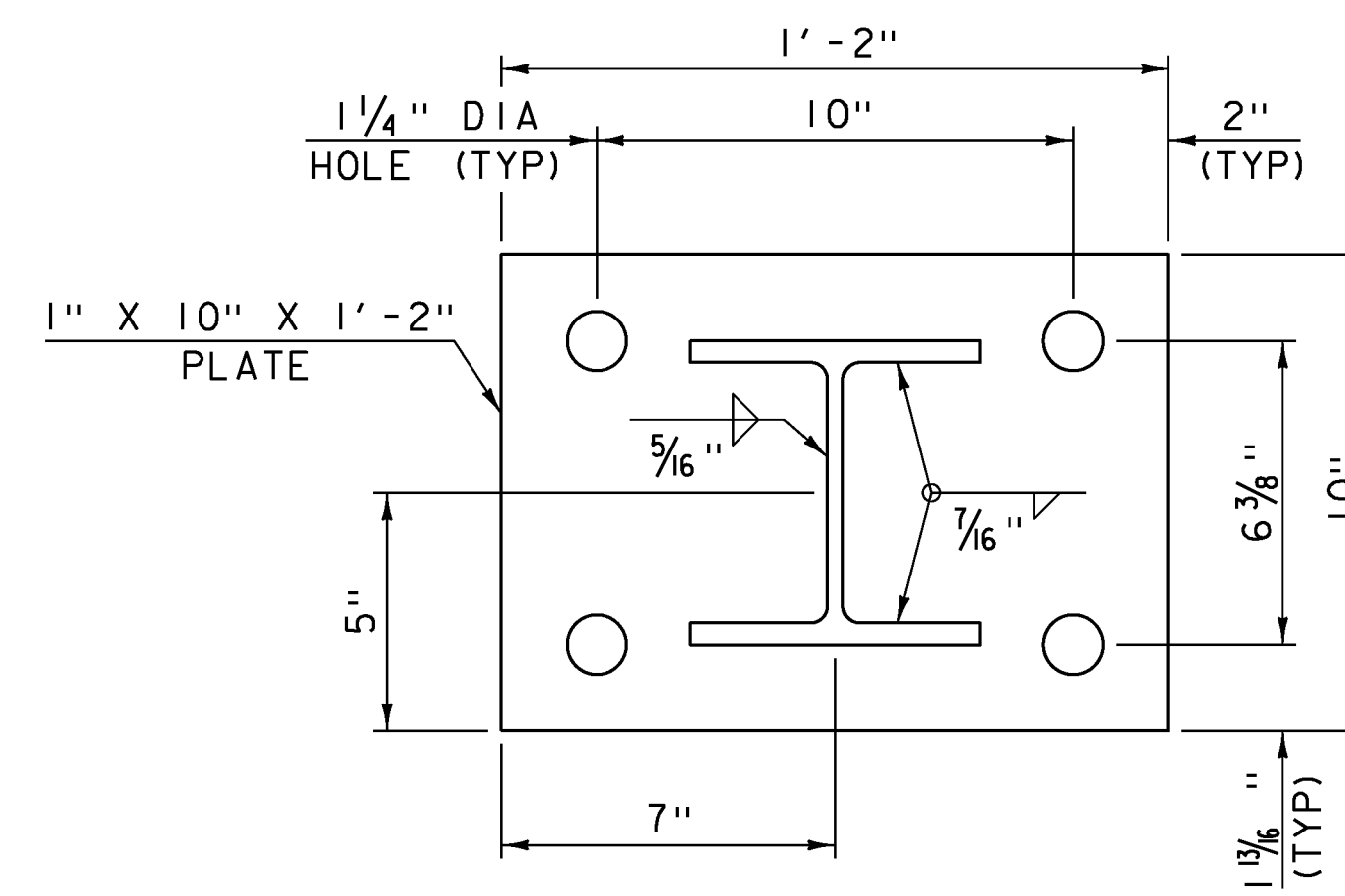
### ROUND HEAD BOLT DETAIL

SCALE: 6" = 1'-0"



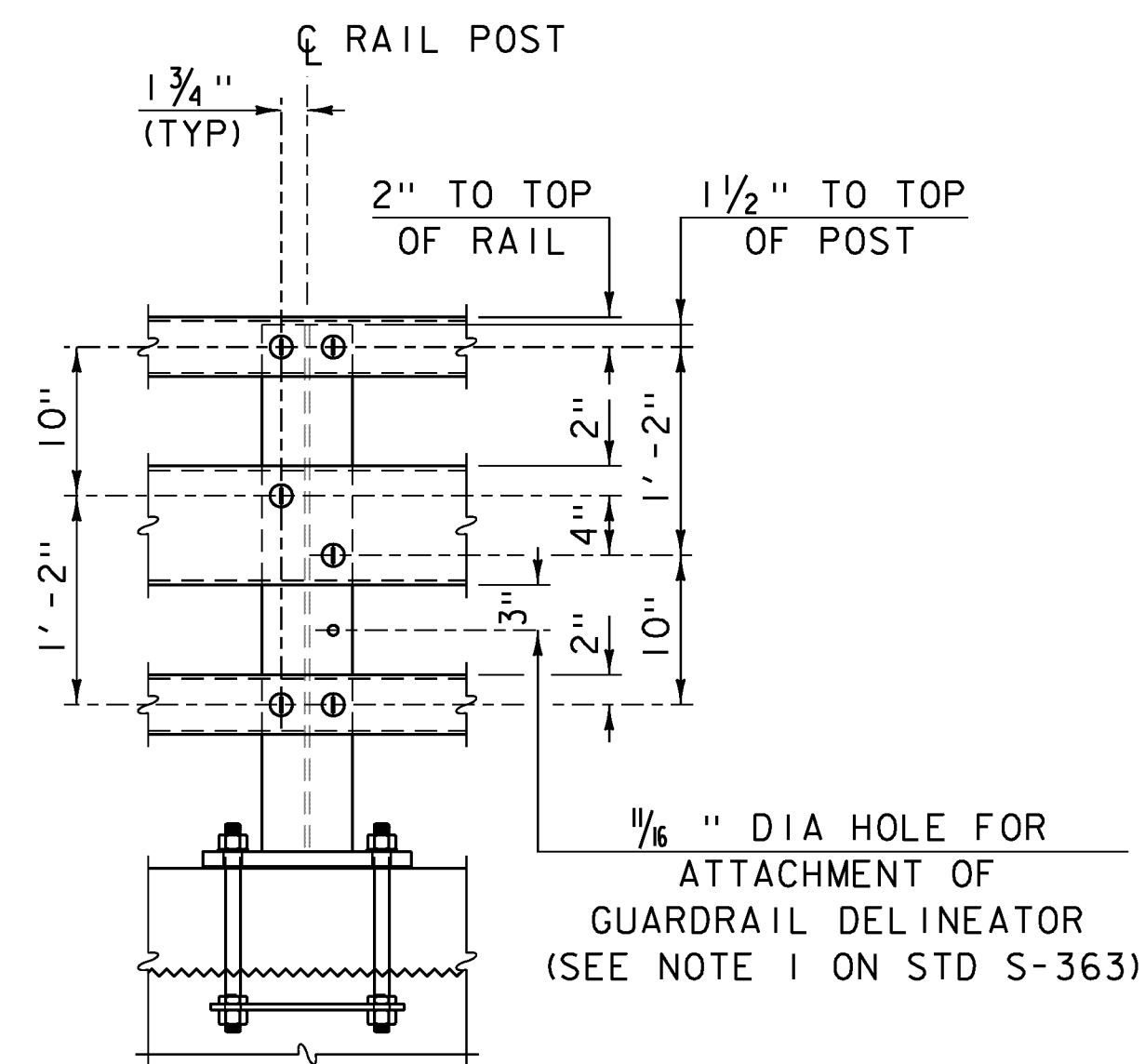
### ANCHOR PLATE

SCALE: 3" = 1'-0"



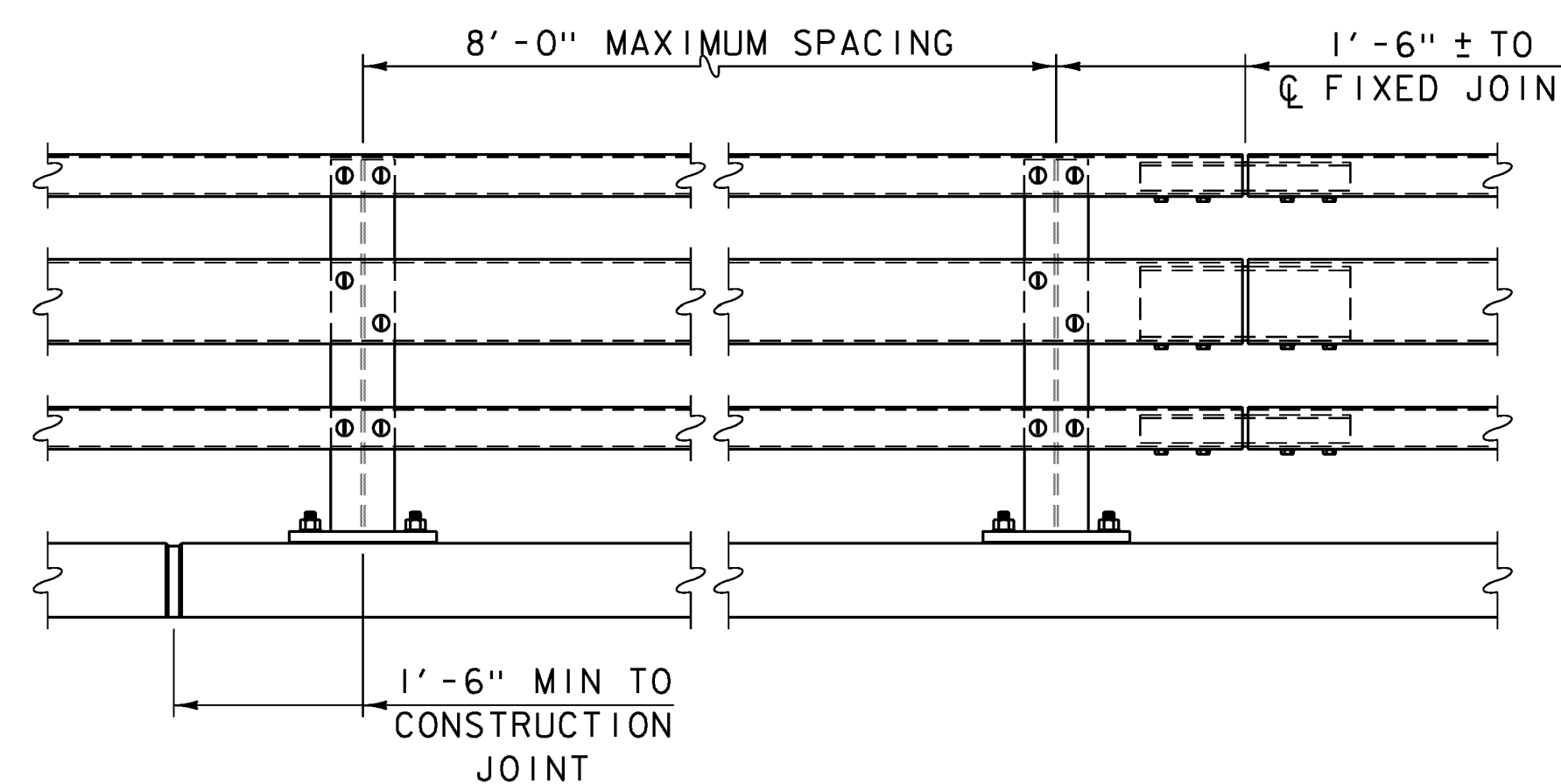
### POST BASE PLATE

SCALE: 3" = 1'-0"



### POST ELEVATION

SCALE: 1" = 1'-0"



### BRIDGE RAILING ELEVATION

SCALE: 1/2" = 1'-0"

### NOTES

1. ALL WORK AND MATERIALS SHALL CONFORM TO SECTION 525.
2. PRIOR TO GALVANIZING THE ASSEMBLED POST, GRIND ALL EDGES TO A MINIMUM RADIUS OF 1/16".
3. ALL POSTS SHALL BE SET NORMAL TO GRADE.
4. SECTIONS OF RAIL TUBE SHALL BE ATTACHED TO A MINIMUM OF TWO BRIDGE RAIL POSTS AND PREFERABLY TO AT LEAST FOUR POSTS.
5. RAIL TUBE EXPANSION JOINTS SHALL BE PROVIDED IN ANY RAIL BAY SPANNING THE END OF AN INTEGRAL ABUTMENT BRIDGE AND AT ALL SUPERSTRUCTURE EXPANSION JOINTS. EXPANSION JOINT WIDTH SHALL BE 4" AT 45°F AND WILL BE ADJUSTED IN THE FIELD BY THE ENGINEER FOR OTHER TEMPERATURES.
6. HOLES IN RAILS FOR RAIL TUBE ATTACHMENT MAY BE FIELD DRILLED. HOLES SHALL BE COATED WITH AN APPROVED ZINC-RICH PAINT PRIOR TO INSTALLATION.
7. RAIL POST ANCHORING NUTS SHALL BE TIGHTENED TO A SNUG FIT AND GIVEN AN ADDITIONAL ONE-EIGHTH TURN.
8. RAIL TUBES SHALL BE ATTACHED USING 3/4" FULL DIAMETER BODY ASTM A 449 (TYPE 1) ROUND HEAD BOLTS WITH WASHER AND PREVAILING TORQUE TYPE LOCK NUT INSERTED THROUGH THE FACE OF THE TUBE. HOLES IN POSTS SHALL BE 1/16" LARGER THAN THE BOLT SIZE.
9. ANY BENDING OF RAIL SHALL BE DONE AT A FABRICATION PLANT ACCORDING TO A PROCEDURE PROVIDED BY THE FABRICATOR.
10. THE MINIMUM DISTANCE FROM THE POST TO AN EXPANSION JOINT SHALL BE DETERMINED BY THE MINIMUM EDGE DISTANCE OF 5" FROM ANY ANCHOR STUD TO THE END OF THE SLAB, OR TO THE EXPANSION JOINT RECESS POUR, IF ONE IS USED.
11. SEE STANDARD DRAWING G-1 FOR DETAILS OF DELINEATORS. A DELINEATOR SHALL BE INSTALLED AT 30 FOOT SPACING OR THE NEAREST POST. WHITE IS TO BE INSTALLED ON THE DRIVER'S RIGHT. FOR ONE WAY BRIDGES, YELLOW IS TO BE INSTALLED ON THE DRIVER'S LEFT. PAYMENT SHALL BE INCIDENTAL TO OTHER ITEMS.
12. THIS RAILING MEETS THE REQUIREMENTS FOR A TL-4 SERVICE LEVEL.

PROJECT NAME: STOWE  
PROJECT NUMBER: BRF 029-1(17)

FILE NAME: s85e037rail.dgn  
PROJECT LEADER: C. CARLSON  
DESIGNED BY: H. I. SALLS  
BRIDGE RAILING DETAILS

PLOT DATE: 17-JUN-2013  
DRAWN BY: G. ROY  
CHECKED BY: H. I. SALLS  
SHEET 33 OF 70