

REMOVAL AND DISPOSAL OF GUARDRAIL

STA 13+60 LT - STA 14+50 LT
STA 14+10 RT - STA 14+60 RT
STA 15+00 LT - STA 16+20 LT
STA 15+10 RT - STA 15+98 RT

CONSTRUCT 5' PAVED APRON

STA 13+10.0 RT - STA 13+58.0 RT

CONSTRUCT GRASS-LINED DITCH

STA 16+54.6 RT - STA 17+00.0 RT
STA 0+45.0 LT - STA 1+50.0 LT

**BRIDGE RAILING, GALVANIZED
3 RAIL BOX BEAM**

STA 14+33.0 LT - STA 15+12.8 LT
STA 14+47.3 RT - STA 15+22.0 RT

CAST-IN-PLACE CONCRETE CURB, TYPE B

STA 13+99.8 LT - STA 14+33.3 LT
STA 14+15.4 RT - STA 14+47.0 RT
STA 15+13.0 LT - STA 15+46.6 LT
STA 15+21.9 RT - STA 15+53.5 RT

HD STEEL BEAM GUARDRAIL, GALVANIZED

STA 13+06.6 LT - STA 14+03.1 LT
STA 15+42.8 LT - STA 15+94.2 LT
VT 100 STA 15+50.3 RT - TH 52 STA 0+84.7 RT

MANUFACTURED TERMINAL SECTION, TANGENT

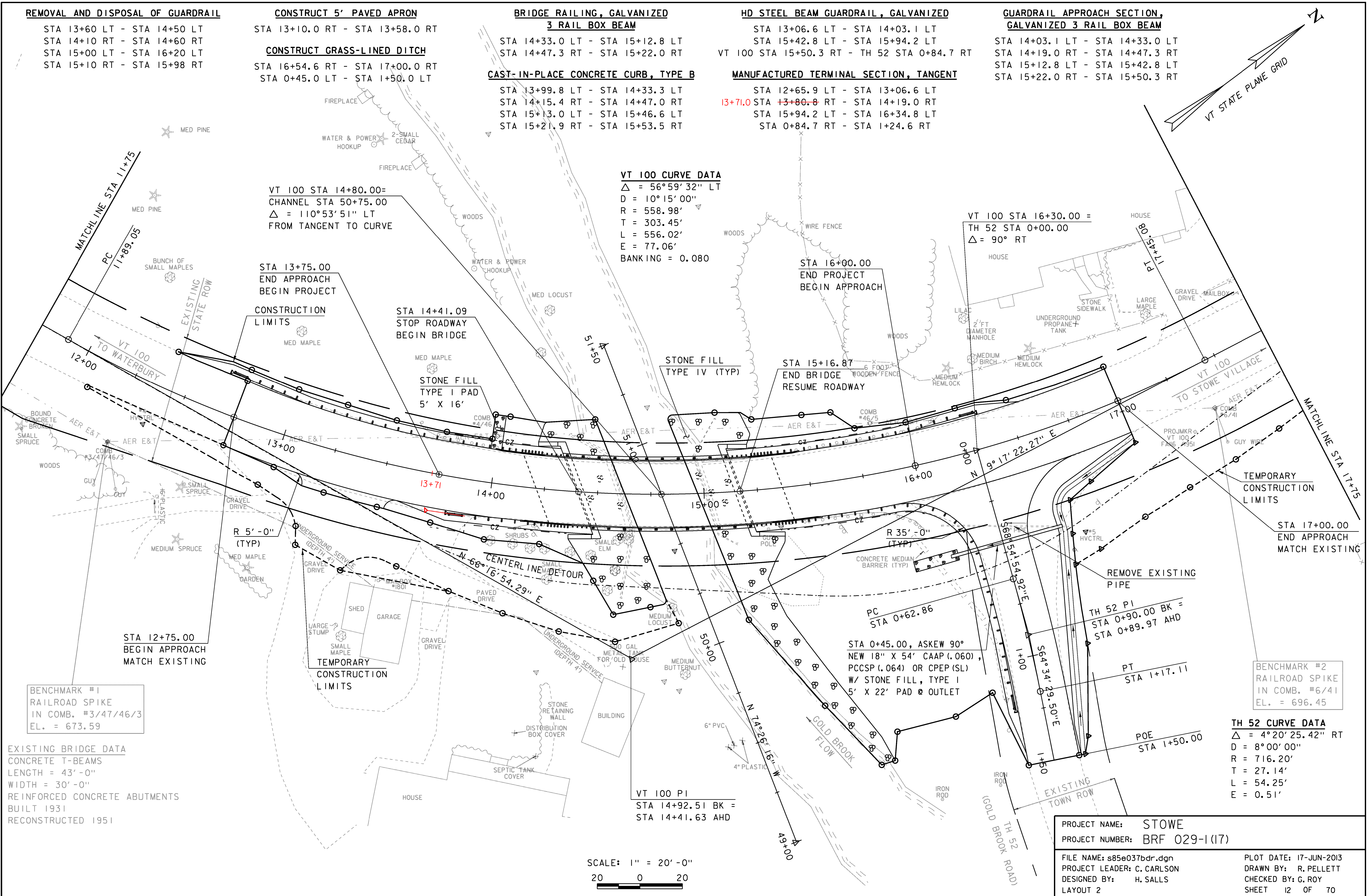
STA 12+65.9 LT - STA 13+06.6 LT
13+71.0 STA 13+80.8 RT - STA 14+19.0 RT
STA 15+94.2 LT - STA 16+34.8 LT
STA 0+84.7 RT - STA 1+24.6 RT

**GUARDRAIL APPROACH SECTION,
GALVANIZED 3 RAIL BOX BEAM**

STA 14+03.1 LT - STA 14+33.0 LT
STA 14+19.0 RT - STA 14+47.3 RT
STA 15+12.8 LT - STA 15+42.8 LT
STA 15+22.0 RT - STA 15+50.3 RT

VT 100 CURVE DATA
Δ = 56°59'32" LT
D = 10°15'00"
R = 558.98'
T = 303.45'
L = 556.02'
E = 77.06'
BANKING = 0.080

VT 100 STA 16+30.00 =
TH 52 STA 0+00.00
Δ = 90° RT



VT 100 STA 14+80.00=
CHANNEL STA 50+75.00
Δ = 110°53'51" LT
FROM TANGENT TO CURVE

STA 13+75.00
END APPROACH
BEGIN PROJECT

CONSTRUCTION
LIMITS

STA 14+41.09
STOP ROADWAY
BEGIN BRIDGE

STONE FILL
TYPE I PAD
5' X 16'

STA 16+00.00
END PROJECT
BEGIN APPROACH

STA 15+16.87
END BRIDGE
RESUME ROADWAY

TEMPORARY
CONSTRUCTION
LIMITS

STA 17+00.00
END APPROACH
MATCH EXISTING

STA 12+75.00
BEGIN APPROACH
MATCH EXISTING

BENCHMARK #1
RAILROAD SPIKE
IN COMB. #3/47/46/3
EL. = 673.59

EXISTING BRIDGE DATA
CONCRETE T-BEAMS
LENGTH = 43'-0"
WIDTH = 30'-0"
REINFORCED CONCRETE ABUTMENTS
BUILT 1931
RECONSTRUCTED 1951

TEMPORARY
CONSTRUCTION
LIMITS

VT 100 PI
STA 14+92.51 BK =
STA 14+41.63 AHD

BENCHMARK #2
RAILROAD SPIKE
IN COMB. #6/41
EL. = 696.45

TH 52 CURVE DATA
Δ = 4°20'25.42" RT
D = 8°00'00"
R = 716.20'
T = 27.14'
L = 54.25'
E = 0.51'

SCALE: 1" = 20'-0"
20 0 20

PROJECT NAME: STOWE
PROJECT NUMBER: BRF 029-1(17)

FILE NAME: s85e037bdr.dgn
PROJECT LEADER: C. CARLSON
DESIGNED BY: H. SALLS
LAYOUT 2

PLOT DATE: 17-JUN-2013
DRAWN BY: R. PELLETT
CHECKED BY: G. ROY
SHEET 12 OF 70