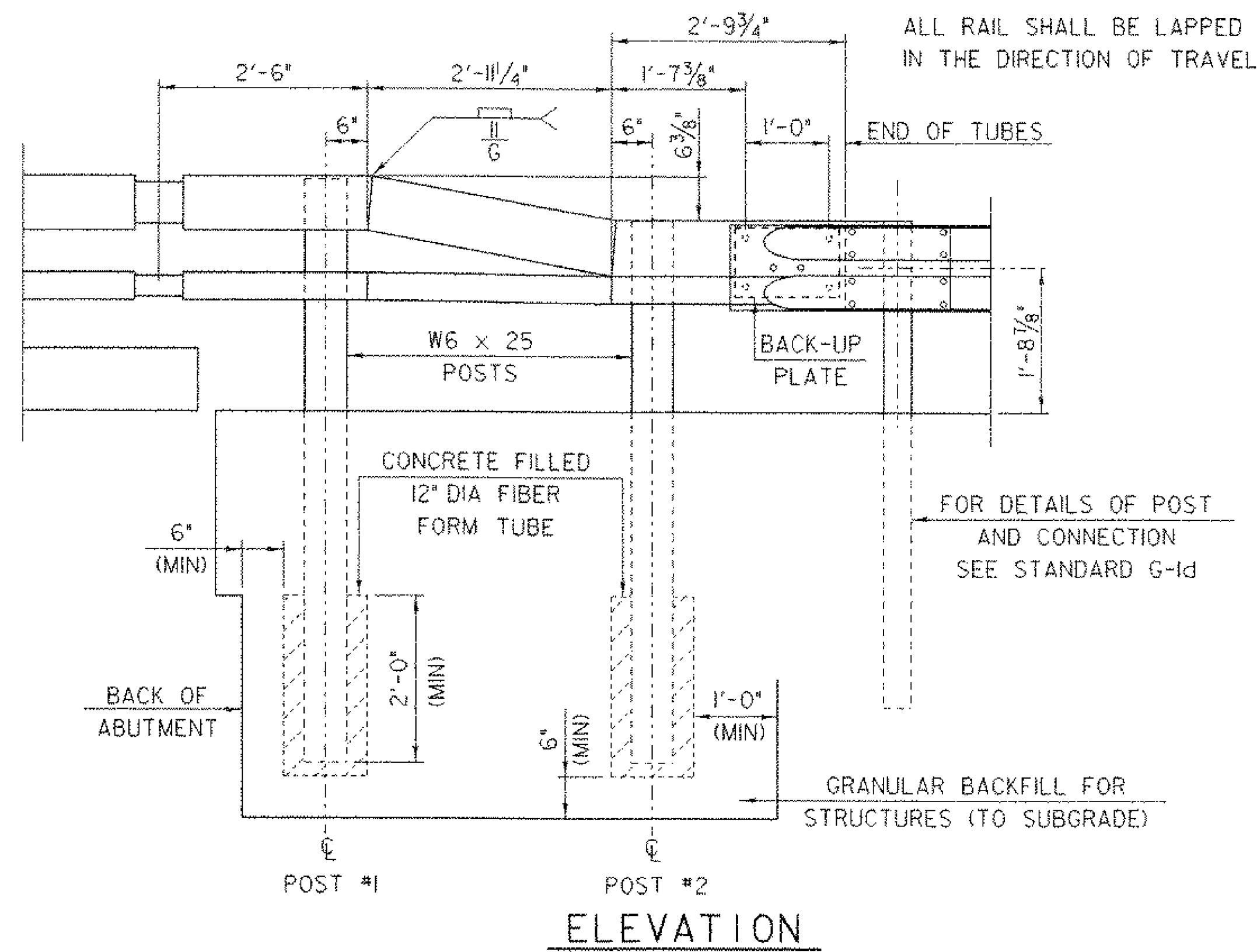


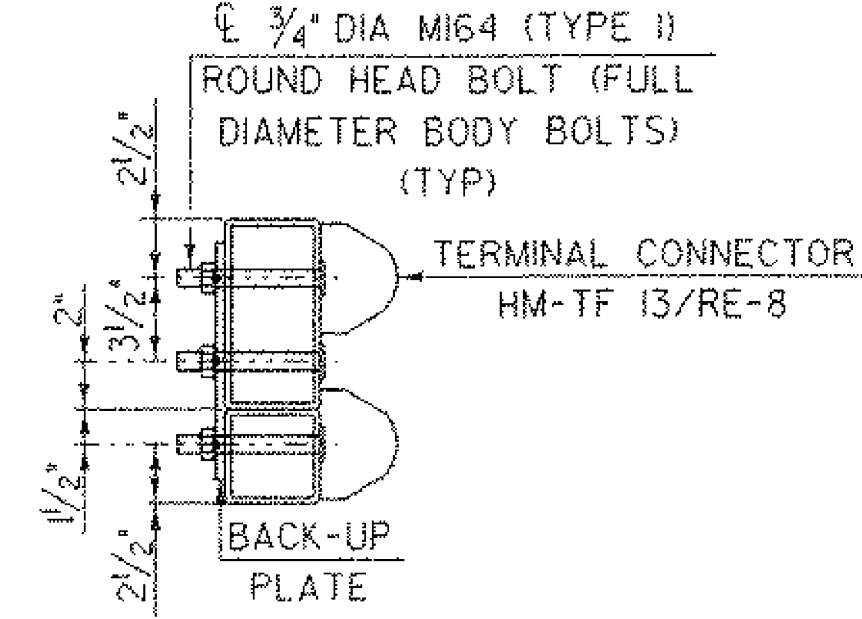
RAILING TRANSITION ELEVATION



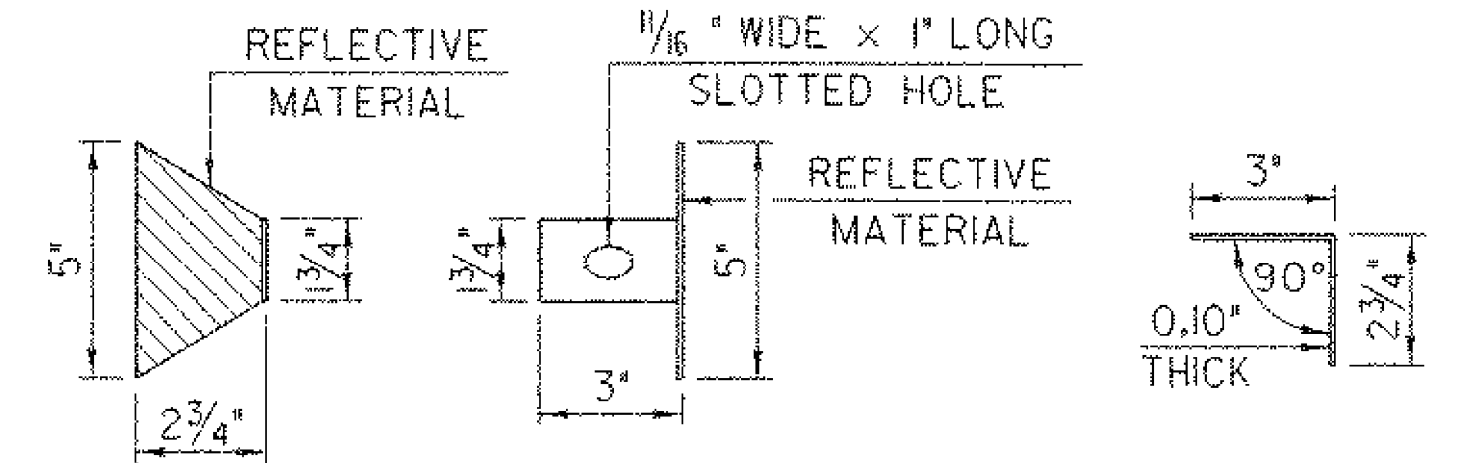
ALL RAIL SHALL BE LAPPED IN THE DIRECTION OF TRAVEL

FOR DETAILS OF POST AND CONNECTION SEE STANDARD G-1d

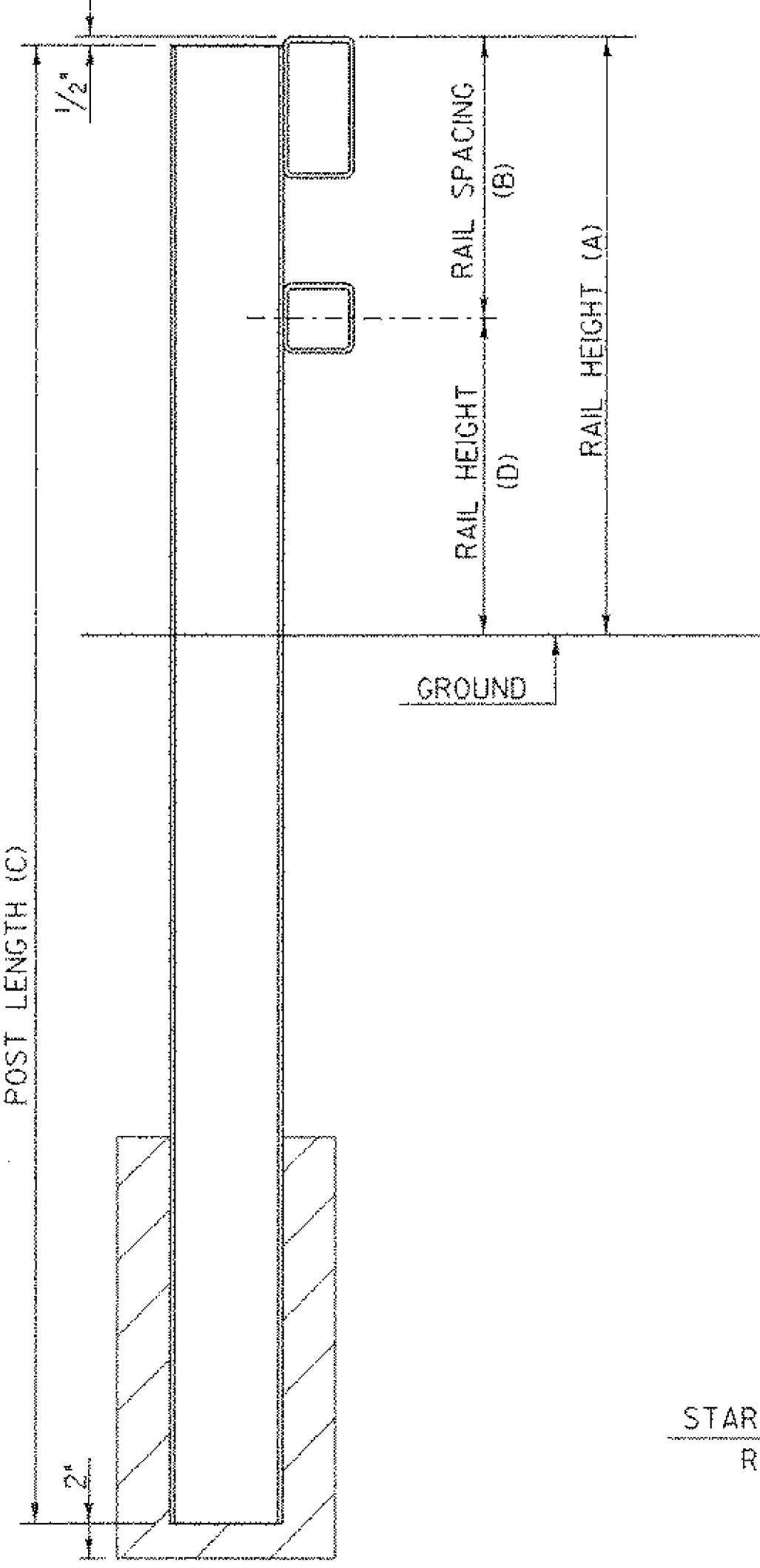
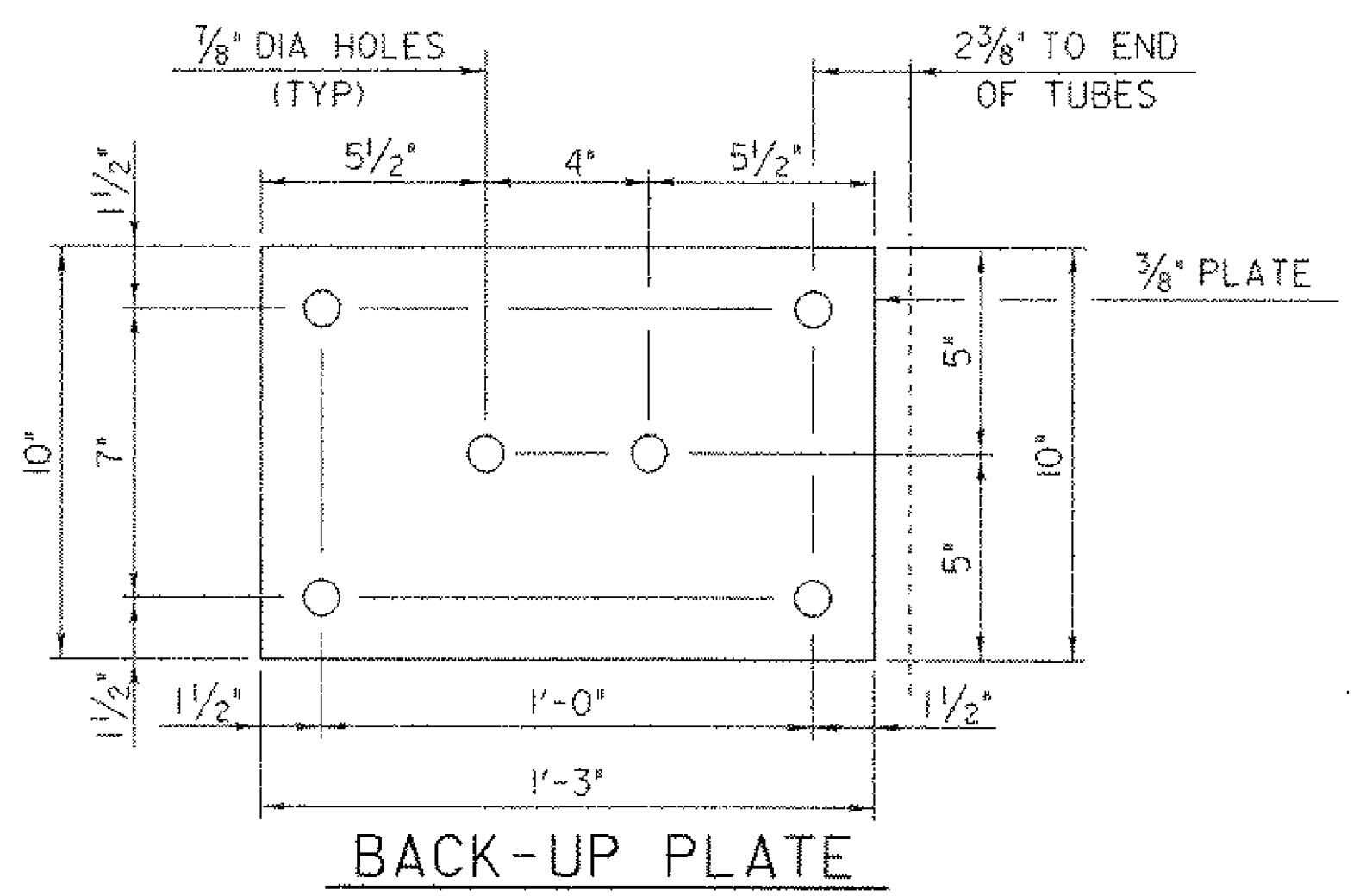
GRANULAR BACKFILL FOR STRUCTURES (TO SUBGRADE)



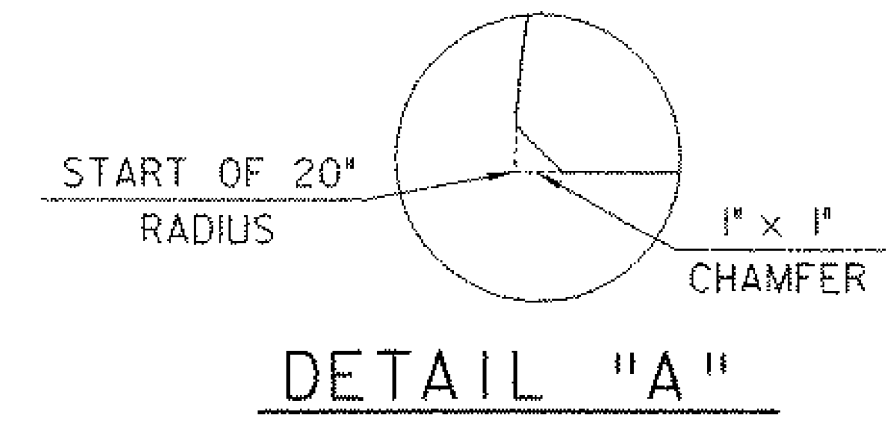
SECTION THROUGH GUARD RAIL CONNECTION AT TERMINAL CONNECTOR



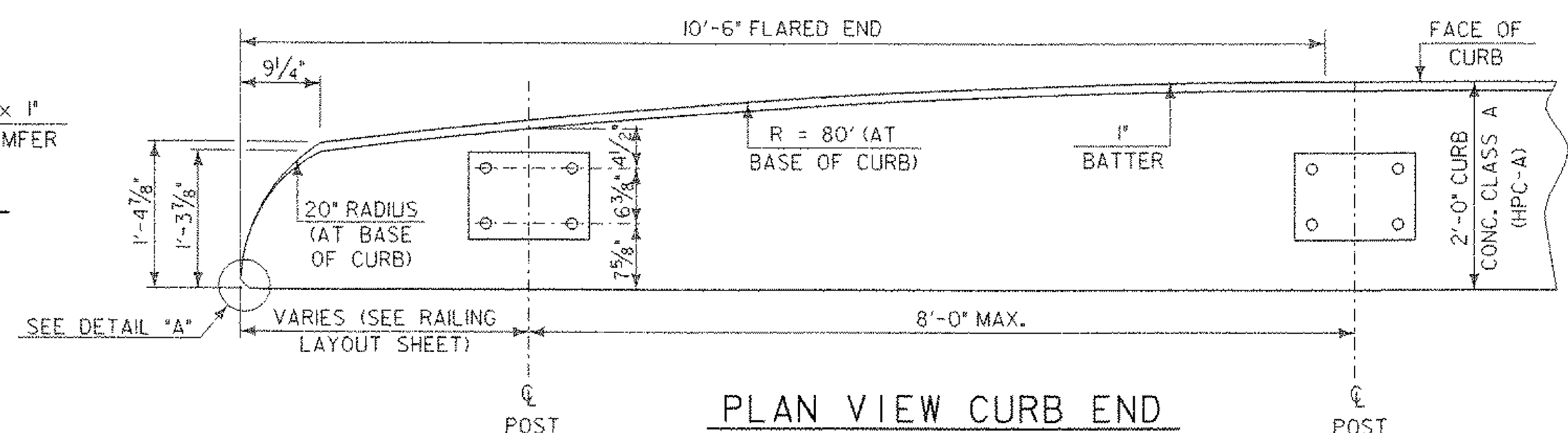
DELINEATION DEVICE DETAILS



TYPICAL SECTION



DETAIL "A"



PLAN VIEW CURB END

POST NUMBER	RAIL HEIGHT (A)	RAIL SPACING (B)	POST LENGTH (C)	RAIL HEIGHT (D)
1	2'-10"	1'-4"	7'-0"	1'-6"
2	2'-3 5/8"	10"	6'-5"	1'-5 5/8"

NOTES

1. REFER TO PREVIOUS SHEET FOR ADDITIONAL DETAILS, NOTES AND MATERIAL SPECIFICATIONS.
2. TO FACILITATE FIELD FIT - UP OF THE TRANSITION RAILING, POSTS SHALL BE SET LOOSELY INTO FIBER FORM TUBES WHILE TRANSITION PARTS ARE BEING ASSEMBLED. POST HOLES SHALL BE BACKFILLED WITH A CONCRETE MIX APPROVED BY THE ENGINEER. PAYMENT FOR COMPONENTS, INCLUDING BACKUP PLATE AND END TERMINAL CONNECTOR FOR GUARD RAIL, AUGERING, FIBER FORM TUBES AND CONCRETE, AND INSTALLATION SHALL BE CONSIDERED INCIDENTAL TO ITEM 525.33, "BRIDGE RAILING - NETC 2 RAIL".
3. THE REFLECTORIZED ALUMINUM DELINEATION IS TO BE ERECTED EVERY 30' (OR CLOSEST POST) WITH A 5/8" DIAMETER BOLT. DELINEATORS SHALL MEET SPECIFICATION REQUIREMENTS FOR ASTM B209 ALLOY 5052-H32.
4. REFLECTIVE MATERIAL SHALL MEET REQUIREMENTS OF SUBSECTION 750.08 OF THE STANDARD SPECIFICATIONS AND SHALL BE OF ENCAPSULATED LENS SILVER OR AMBER. AMBER IS TO BE INSTALLED ON THE DRIVER'S LEFT AND SILVER ON THEIR RIGHT.
5. ON BRIDGES WITH A SIDEWALK, DELINEATORS ARE NOT TO BE INSTALLED ON THE SIDEWALK SIDE OF THE BRIDGE (I.E. DELINEATORS INSTALLED ONLY ON THE CURB SIDE AND ON THE APPROACH ON THE CURB SIDE). PAYMENT SHALL BE SUBSIDIARY TO ALL OTHER ITEMS.
6. ALL APPROACH RAIL SPLICES SHALL BE LAPPED IN THE DIRECTION OF TRAFFIC FLOW.
7. SEE STANDARDS G-1 AND G-1d FOR ADDITIONAL INFORMATION.

SHEET NAME: NETC BRIDGE RAIL DETAILS (2)	
PROJECT NAME: READING	HIGHWAY NO.: VT 44
PROJECT NUMBER: BRS 0148(6)S	BRIDGE NO.: 1
	OVER: THE MILL BROOK
FILE NAME: PW/85e034/Structures/ee034r.dgn	PLOT DATE: 17-FEB-2006
PROJECT MANAGER: R. WHITCOMB	DRAWN BY: G. ROY
DESIGNED BY: C. CARLSON	IPARM NAME: ee034r.d2.1
BRIDGE SHEET NUMBER:	SHEET 51 OF 83