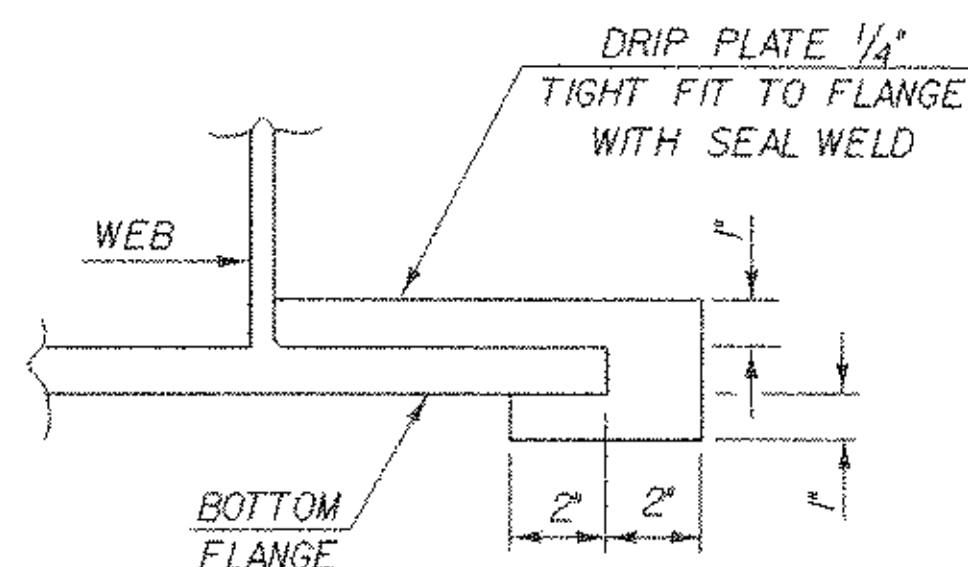
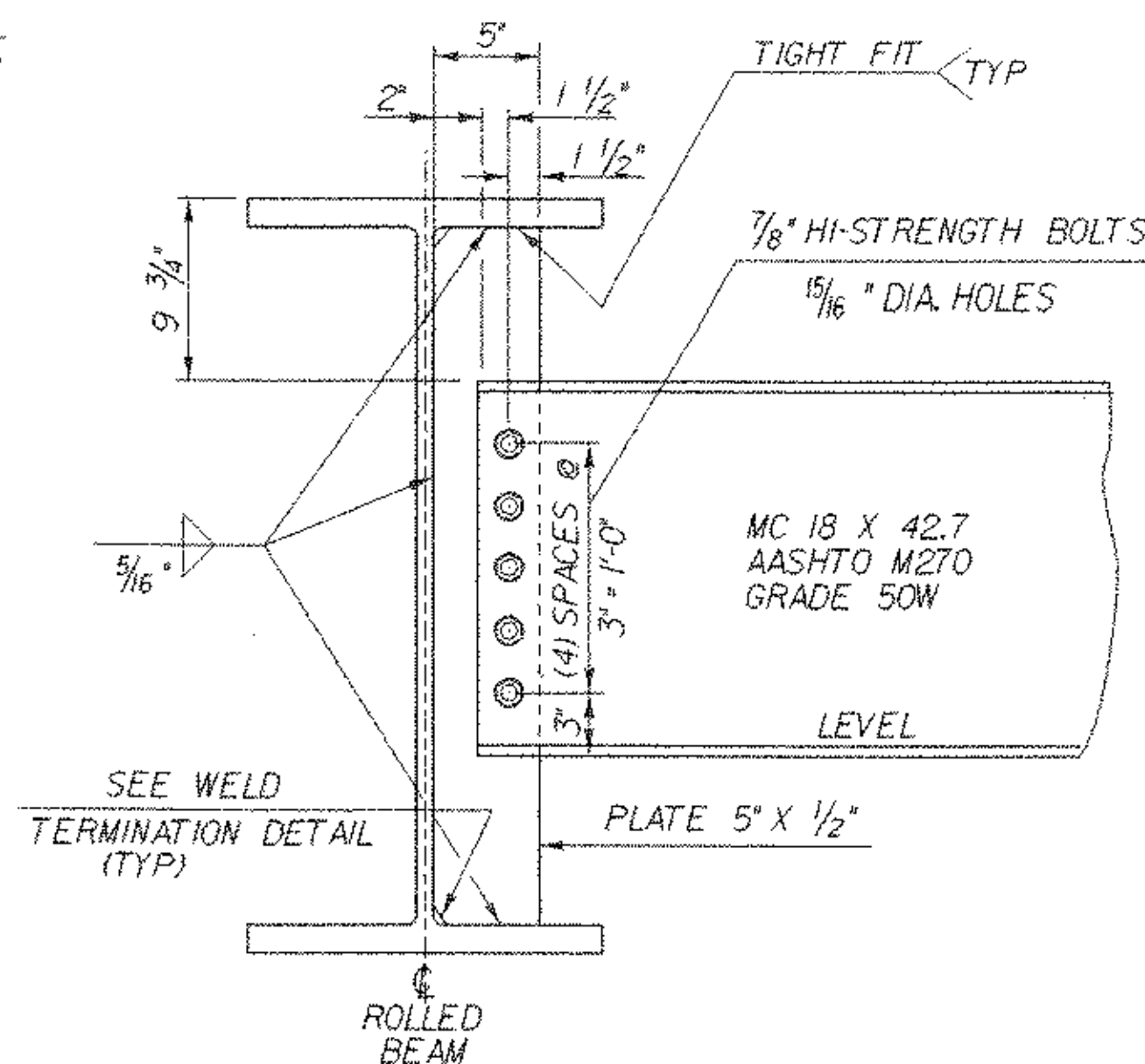


PLAN DRIP PLATE

NOTE: DRIP PLATES SHALL BE PLACED ON OUTSIDE EDGE OF FASCIA GIRDERS ON THE HIGH SIDE OF ABUTMENTS OR AS INDICATED ON PROJECT PLANS.

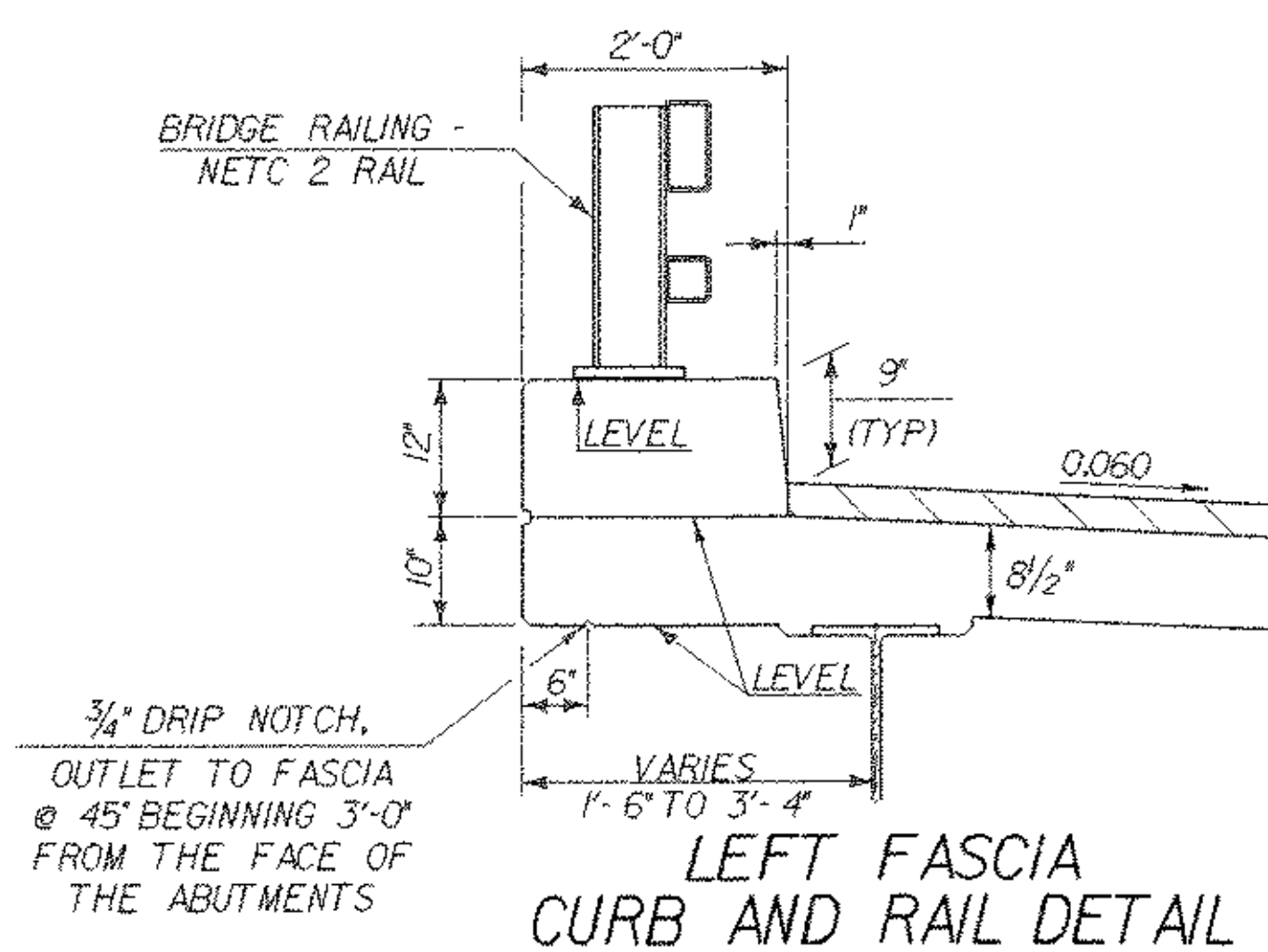


SECTION A - A



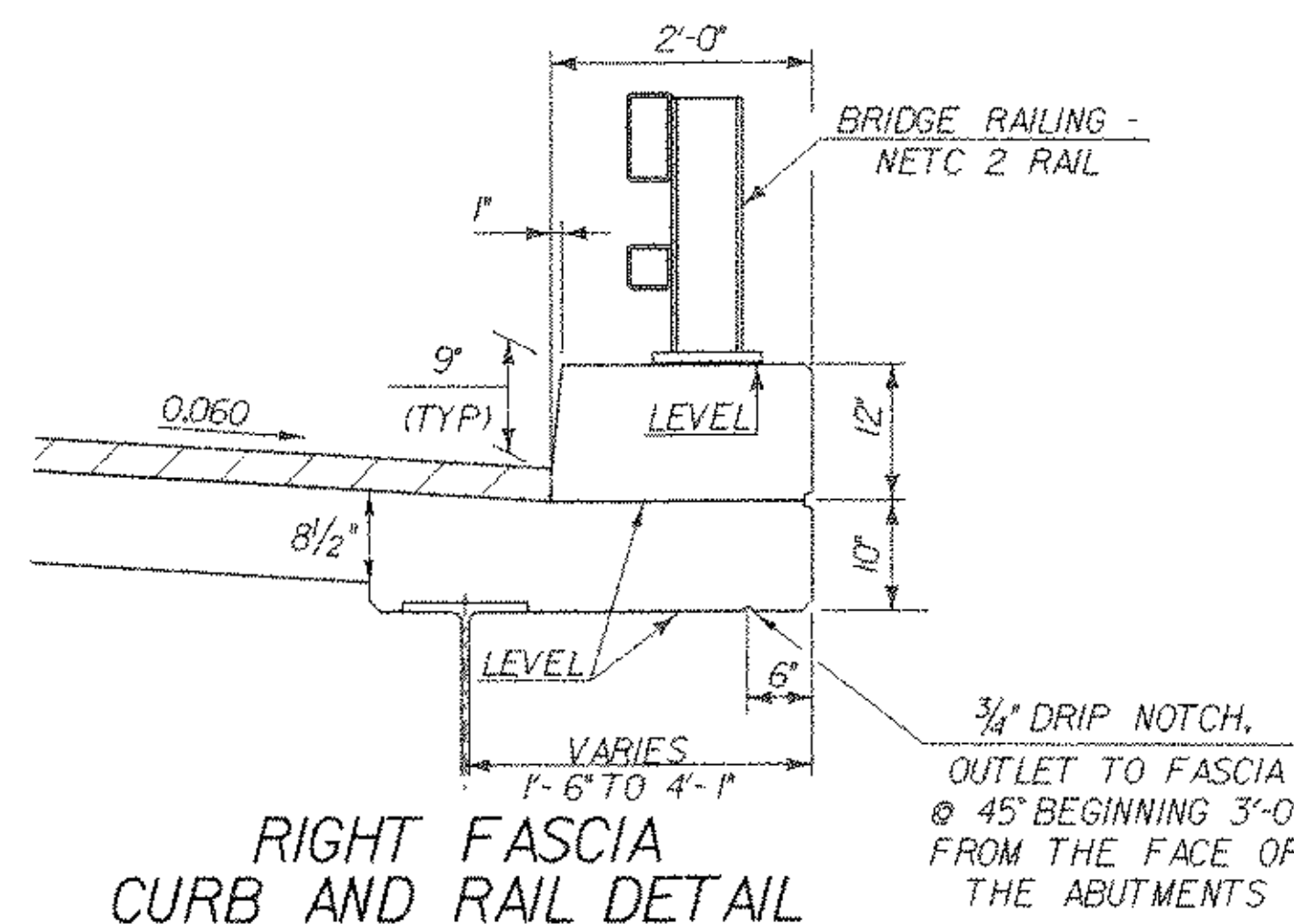
NOTE: HI-STRENGTH BOLTS, NUTS AND WASHERS SHALL CONFORM TO AASHTO DESIGNATION M164.

INTERMEDIATE DIAPHRAGMS



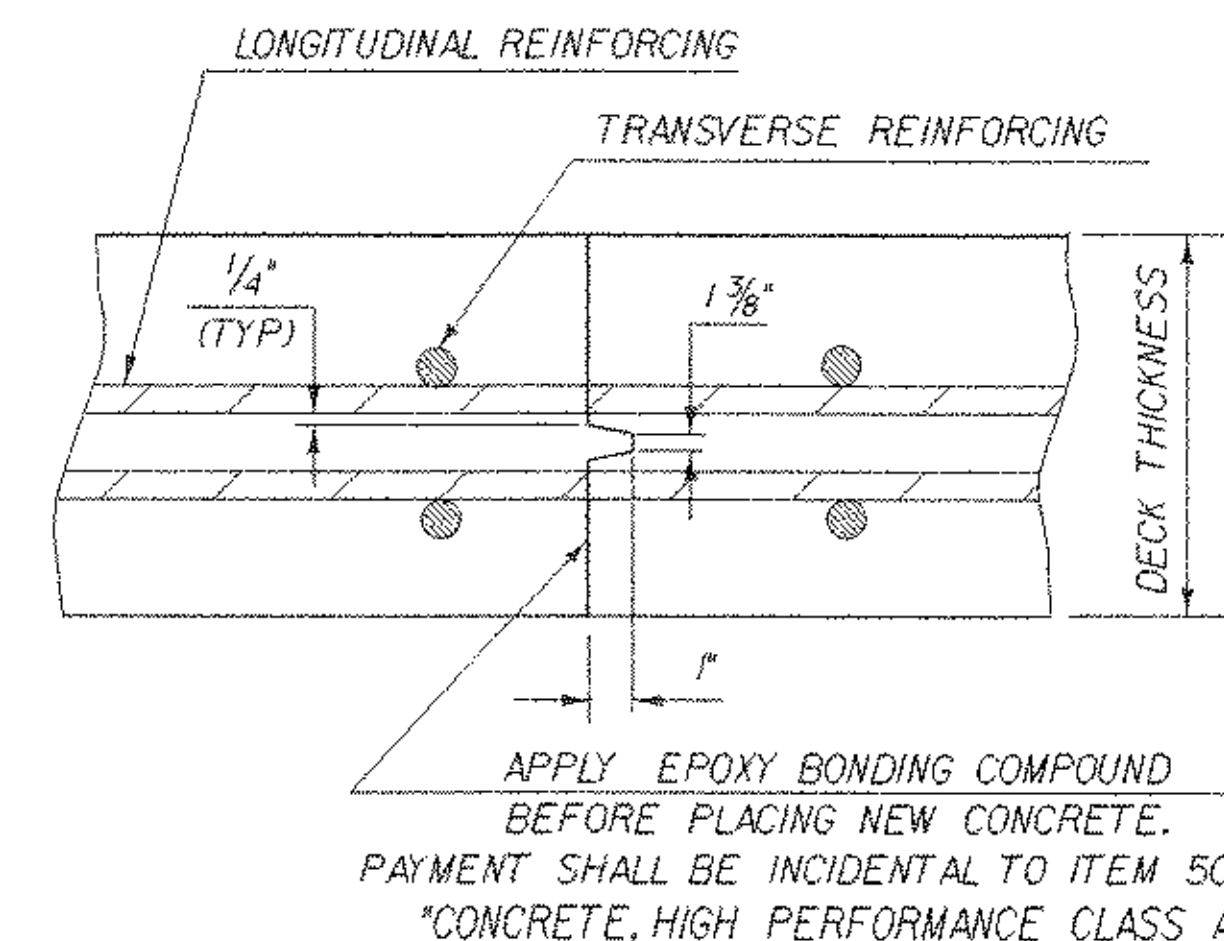
LEFT FASCIA CURB AND RAIL DETAIL

SCALE: 3/4" = 1'-0"

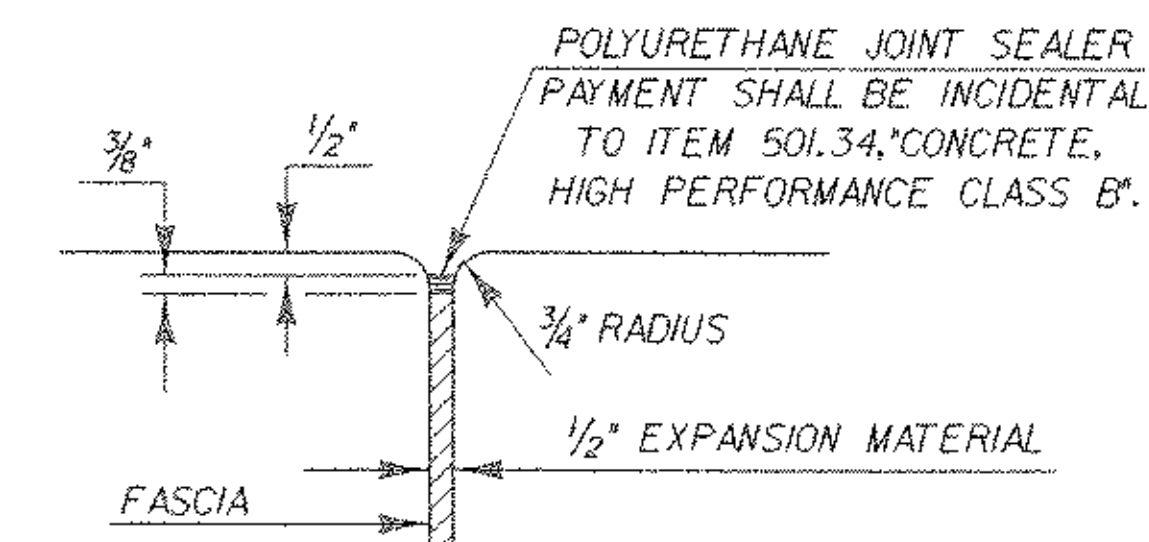


RIGHT FASCIA CURB AND RAIL DETAIL

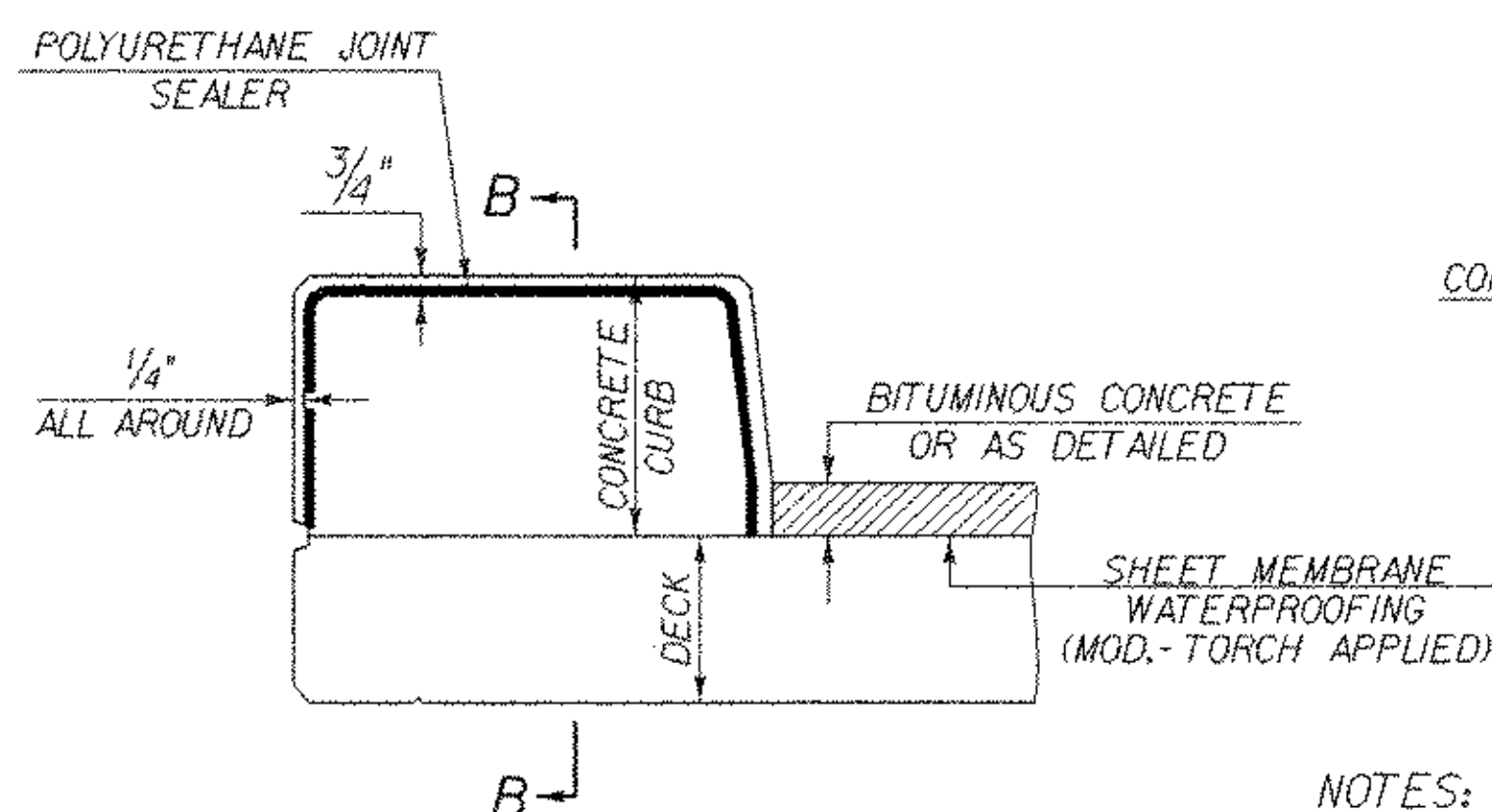
SCALE: 3/4" = 1'-0"



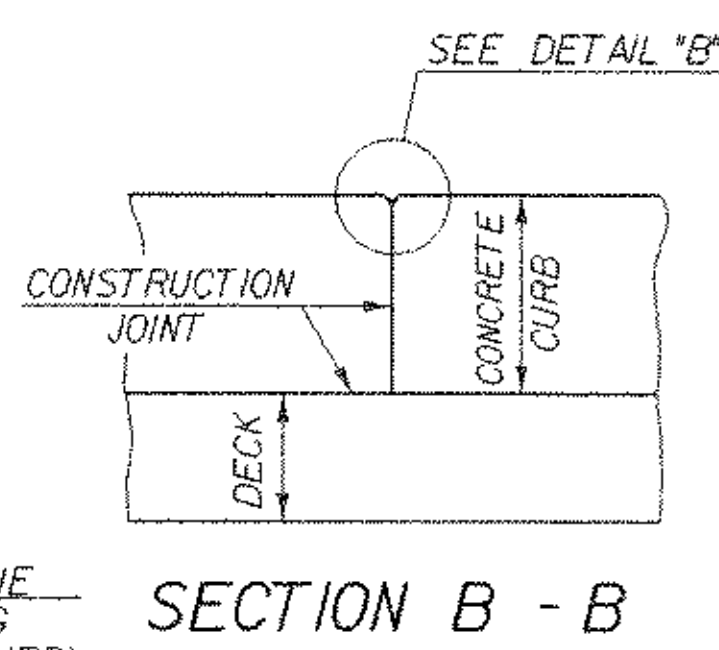
TRANSVERSE BRIDGE SLAB CONSTRUCTION JOINT DETAILS



JOINT BETWEEN FASCIA AND WINGWALL

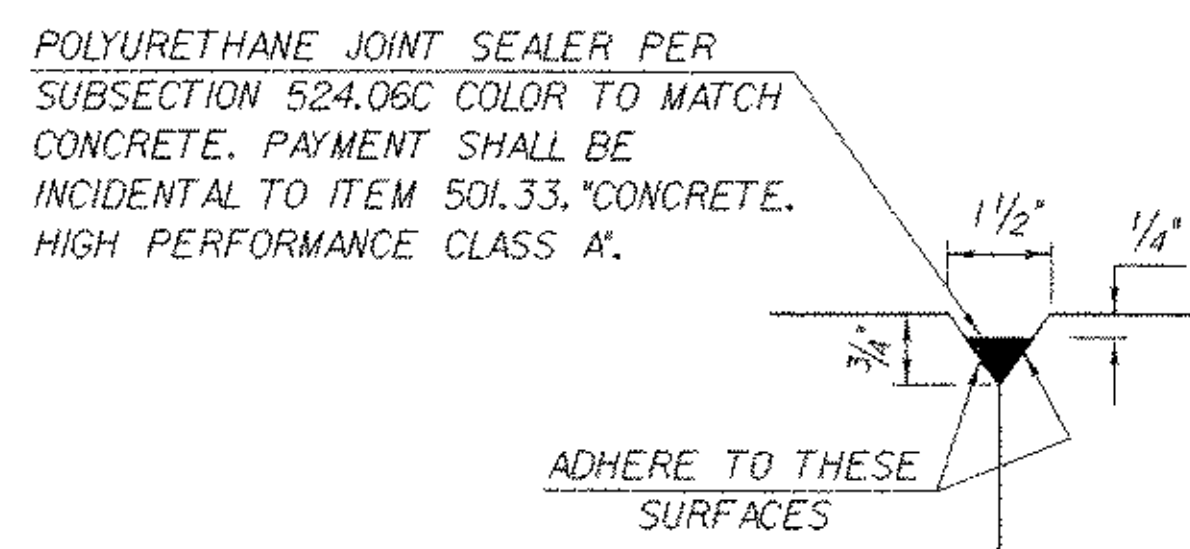


TYPICAL SECTION THROUGH CONCRETE CURB CONSTRUCTION JOINT

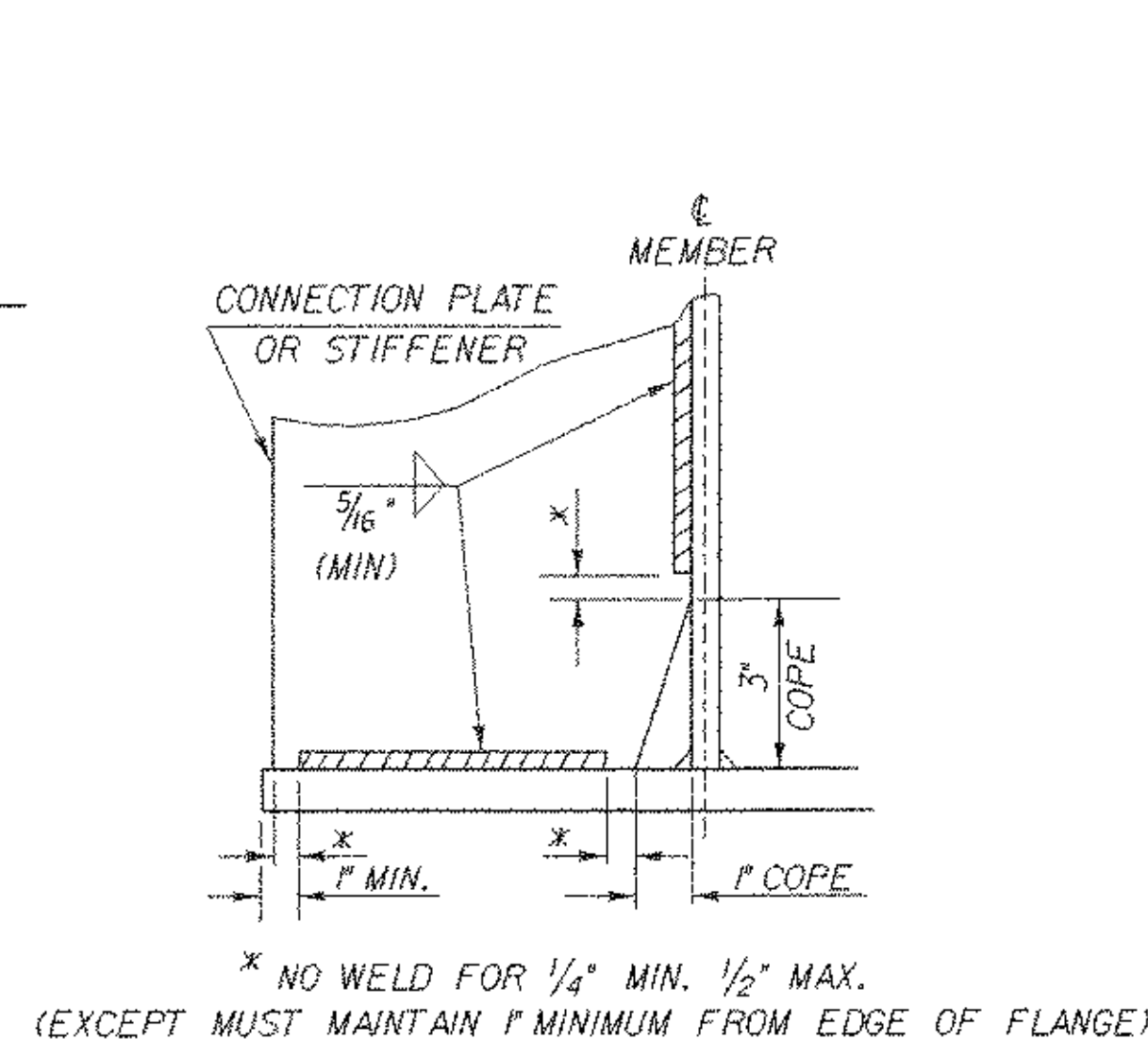


SECTION B - B

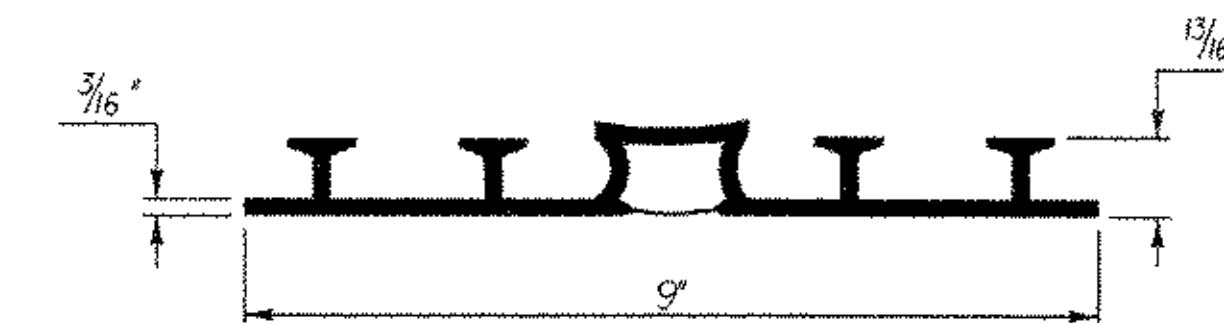
- NOTES:
1. CONSTRUCTION JOINTS THROUGH CONCRETE CURBS SHALL BE SPACED MAXIMUM 15'-0" CENTER TO CENTER AND SHALL BE 1'-6" MINIMUM FROM THE CENTER OF THE NEAREST BRIDGE RAIL POST. CONCRETE SHALL BE PLACED IN ALTERNATING SECTIONS WITH A MINIMUM OF 48 HOURS DELAY BETWEEN ADJACENT POURS.
 2. LONGITUDINAL REINFORCING SHALL PASS THROUGH CONCRETE CURB CONSTRUCTION JOINTS.
 3. POLYURETHANE MEMBRANE AND BLAST CLEANING SHALL BE INCLUDED IN THE UNIT PRICE BID FOR SHEET MEMBRANE WATERPROOFING.



DETAIL "B"



WELD TERMINATION AND COPING DETAILS FOR STEEL MEMBERS



P.V.C. WATERSTOP FOR EXPANSION JOINTS
THE COST FOR P.V.C. WATERSTOP SHALL BE INCIDENTAL TO ITEM 501.34, CONCRETE, HIGH PERFORMANCE CLASS B. OTHER CONFIGURATIONS MAY BE USED UPON APPROVAL OF THE STRUCTURES ENGINEER.

SHEET NAME: SUPERSTRUCTURE DETAILS	
PROJECT NAME: READING	HIGHWAY NO.: VT 44
PROJECT NUMBER: BRS 0148(6)S	BRIDGE NO.: 1
	OVER: THE MILL BROOK
FILE NAME: PW/85e034/Structures/se034sup.dgn	PLOT DATE: 17-FEB-2006
PROJECT MANAGER: R. WHITCOMB	DRAWN BY: T. FILLBACH
DESIGNED BY: C. CARLSON	IPARM NAME: se034sd.1
BRIDGE SHEET NUMBER:	SHEET 48 OF 83