

CONSTRUCT DRIVES
 STA 11+75 LT (PAVED) (DRIVE 1)
 DR 1 STA 60+53 RT (DRIVE 2)
 SEE SECTIONS ON SHEETS 74 & 75
 DR 2 STA 5+1/2 LT (AGGREGATE SURFACE COURSE)

ANCHOR FOR STEEL BEAM RAIL
 STA 11+68.4 RT
 STA 13+13.8 LT

HEAVY DUTY STEEL BEAM GUARD RAIL
 STA 11+63.0 RT - 13+22.8 RT
 STA 13+08.3 LT - 13+43.0 LT
 STA 14+70.3 RT - 14+75 LT

GUARD RAIL - APPROACH
SECTION NETC TWO RAIL
 STA 13+22.8 RT - 13+49.3 RT
 STA 13+43.0 LT - 13+66.6 LT
 STA 14+43.5 RT - 14+70.3 RT
 STA 14+64.8 LT - 14+75 LT

CONSTRUCT SPECIAL WALKWAY
 DR 2 STA 50+48 LT - DR 2 STA 50+91 LT
 50+35 50+70

BRIDGE RAILING
NETC 2 RAIL
 STA 13+49.3 RT - 14+43.5 RT
 STA 13+66.6 LT - 14+64.8 LT

VERTICAL GRANITE CURB
 STA 12+60.0 RT - 13+60.9 RT
 STA 14+33.3 RT - 14+75 RT

REMOVE EXISTING TREE
 STA 50+54.8 LT (MAPLE)

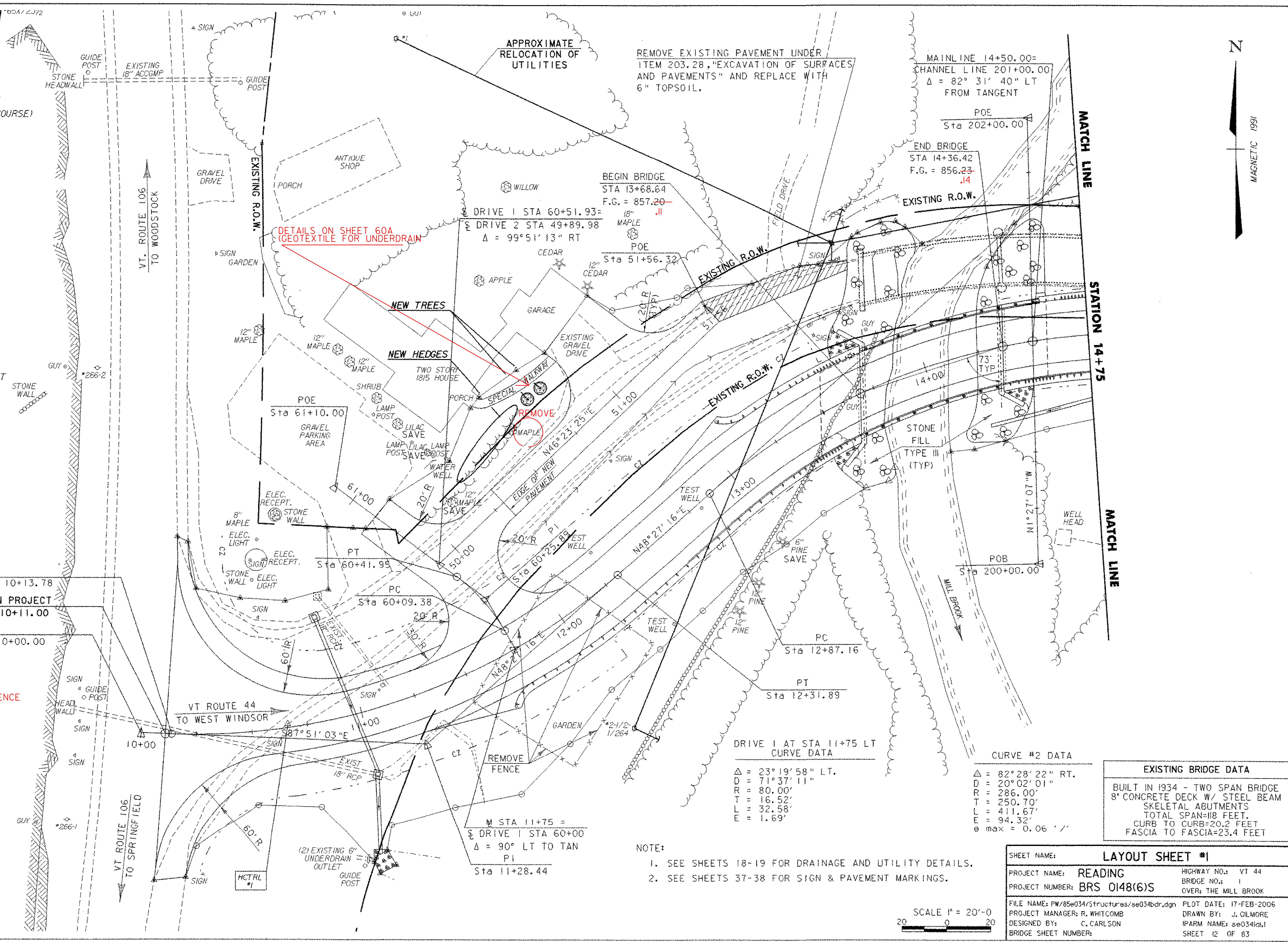
REMOVE EXISTING HEDGES
 STA 40+90 LT - STA 50+61 LT (EVERGREENS)

~~REMOVAL OF EXISTING FENCE~~
 STA 11+50 RT - STA 12+25 RT. NO FENCE

CURVE #1 DATA
 $\Delta = 43^\circ 41' 42''$ LT.
 $D = 20^\circ 02' 01''$
 $R = 286.00'$
 $T = 114.67'$
 $L = 218.11'$
 $E = 22.13'$
 $e_{max} = 0.06' /'$

NEW CEDAR HEDGES
 11-6 FT WHITE CEDAR @ 4 FT SPACING
 STA 50+21 LT - STA 50+64 LT

NEW DECIDUOUS TREES (MAPLE)
 STA 50+69.7 LT (O/S 26 FT)
 STA 50+77.3 LT (O/S 25.8 FT)



REMOVE EXISTING PAVEMENT UNDER ITEM 203.28, "EXCAVATION OF SURFACES AND PAVEMENTS" AND REPLACE WITH 6" TOPSOIL.

DETAILS ON SHEET 60A (GEOTEXTILE FOR UNDERDRAIN)

APPROXIMATE RELOCATION OF UTILITIES

MAINLINE 14+50.00= CHANNEL LINE 201+00.00
 $\Delta = 82^\circ 31' 40''$ LT FROM TANGENT

END BRIDGE
 STA 14+36.42
 F.G. = 856.23
 .14

BEGIN BRIDGE
 STA 13+68.64
 F.G. = 857.20
 .11

DRIVE 1 STA 60+51.93=
 DRIVE 2 STA 49+89.98
 $\Delta = 99^\circ 51' 13''$ RT

DRIVE 1 AT STA 11+75 LT
 CURVE DATA
 $\Delta = 23^\circ 19' 58''$ LT.
 $D = 71^\circ 37' 11''$
 $R = 80.00'$
 $T = 16.52'$
 $L = 32.58'$
 $E = 1.69'$

CURVE #2 DATA
 $\Delta = 82^\circ 28' 22''$ RT.
 $D = 20^\circ 02' 01''$
 $R = 286.00'$
 $T = 250.70'$
 $L = 411.67'$
 $E = 94.32'$
 $e_{max} = 0.06' /'$

EXISTING BRIDGE DATA
 BUILT IN 1934 - TWO SPAN BRIDGE
 8' CONCRETE DECK W/ STEEL BEAM
 SKELETAL ABUTMENTS
 TOTAL SPAN=118 FEET.
 CURB TO CURB=20.2 FEET
 FASCIA TO FASCIA=23.4 FEET

NOTE:
 1. SEE SHEETS 18-19 FOR DRAINAGE AND UTILITY DETAILS.
 2. SEE SHEETS 37-38 FOR SIGN & PAVEMENT MARKINGS.

SCALE 1" = 20'-0"
 20 0 20

SHEET NAME: LAYOUT SHEET #1	
PROJECT NAME: READING	HIGHWAY NO.: VT 44
PROJECT NUMBER: BRS 0148(6)S	BRIDGE NO.: 1
FILE NAME: PW/85e034/Structuras/se034bdr.dgn	OVER: THE MILL BROOK
PROJECT MANAGER: R. WHITCOMB	PLOT DATE: 17-FEB-2006
DESIGNED BY: C. CARLSON	DRAWN BY: J. GILMORE
BRIDGE SHEET NUMBER:	IPARM NAME: se034td.1
	SHEET 12 OF 83