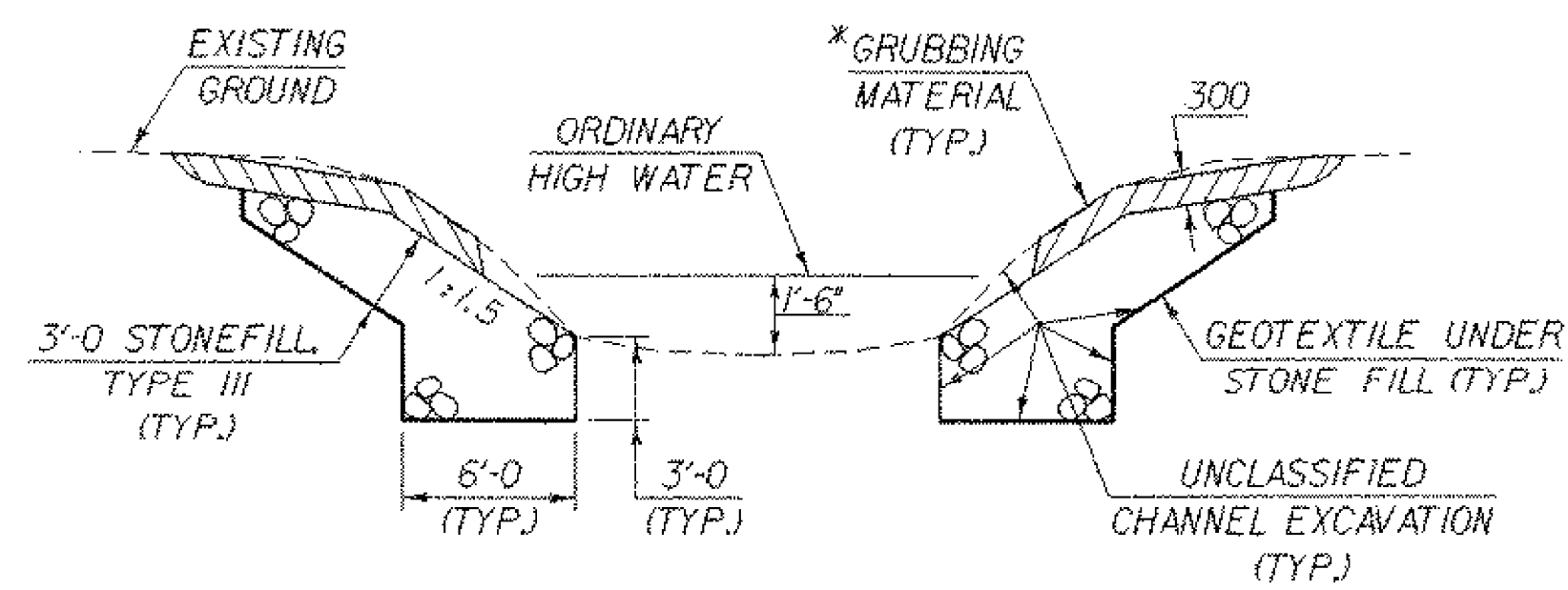


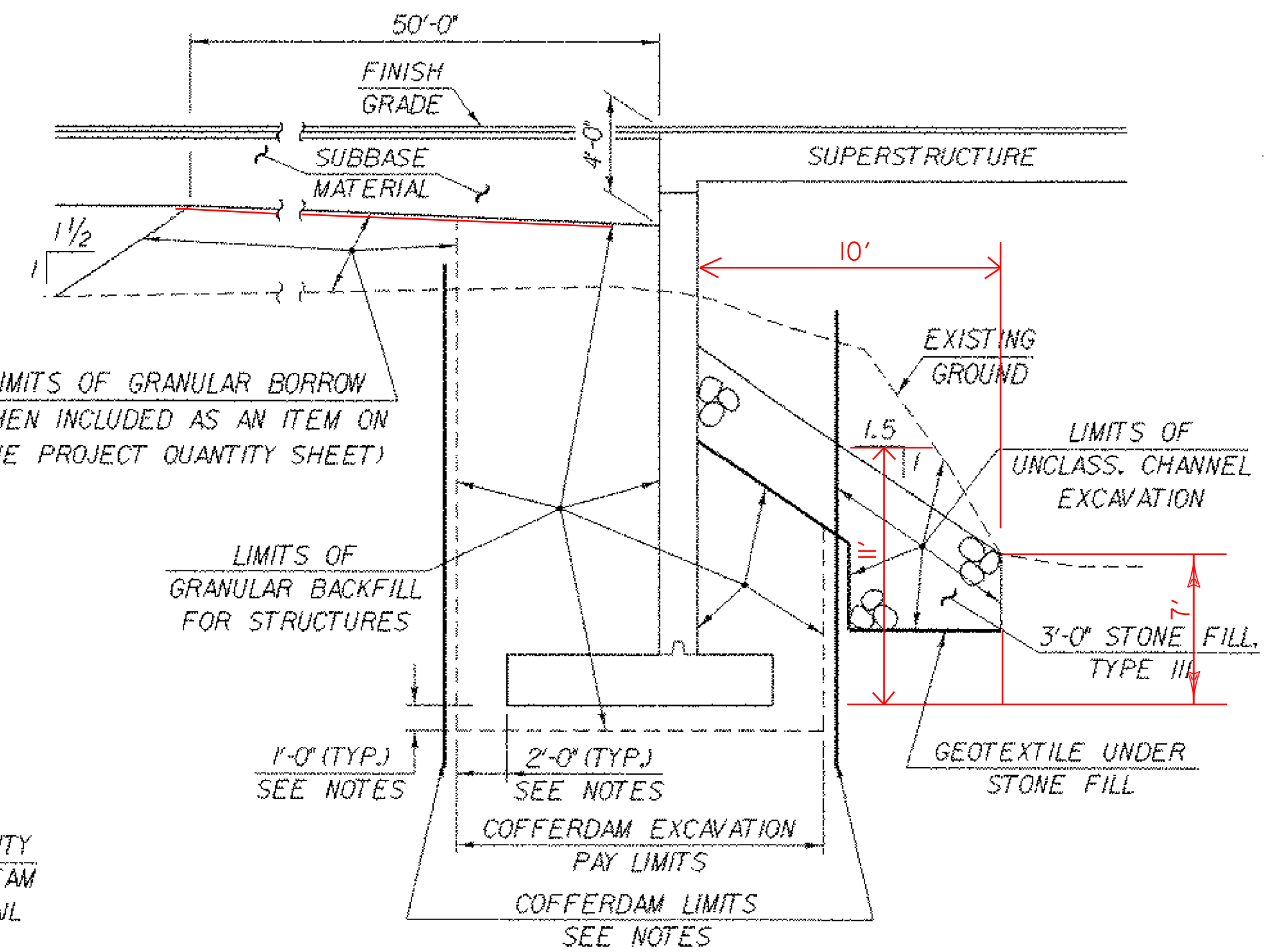
* FIRST LIFT: 1 1/2" BIT. CONC. PAVEMENT TYPE III
 SECOND LIFT: 1 1/2" BIT. CONC. PAVEMENT TYPE III

TYPICAL BRIDGE SECTION
 (NOT TO SCALE)

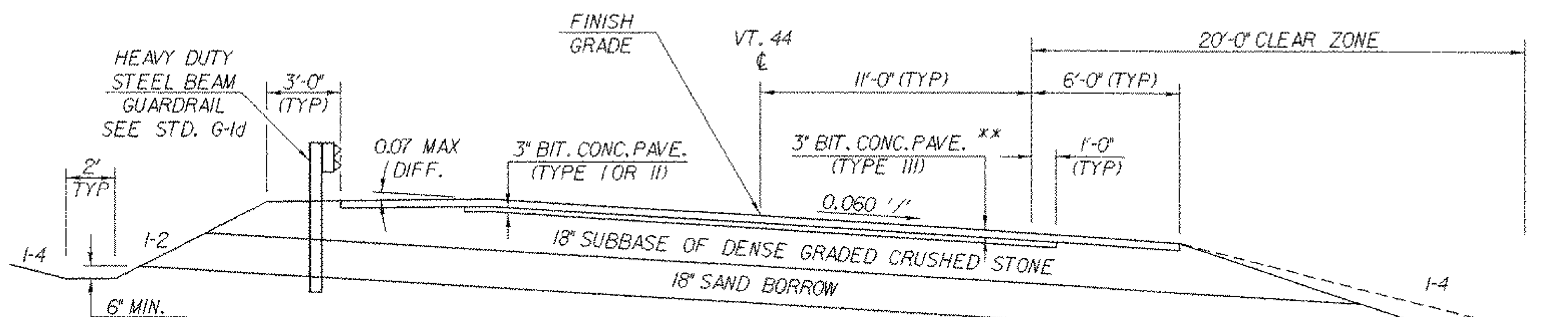


TYPICAL CHANNEL SECTION
 (NOT TO SCALE)

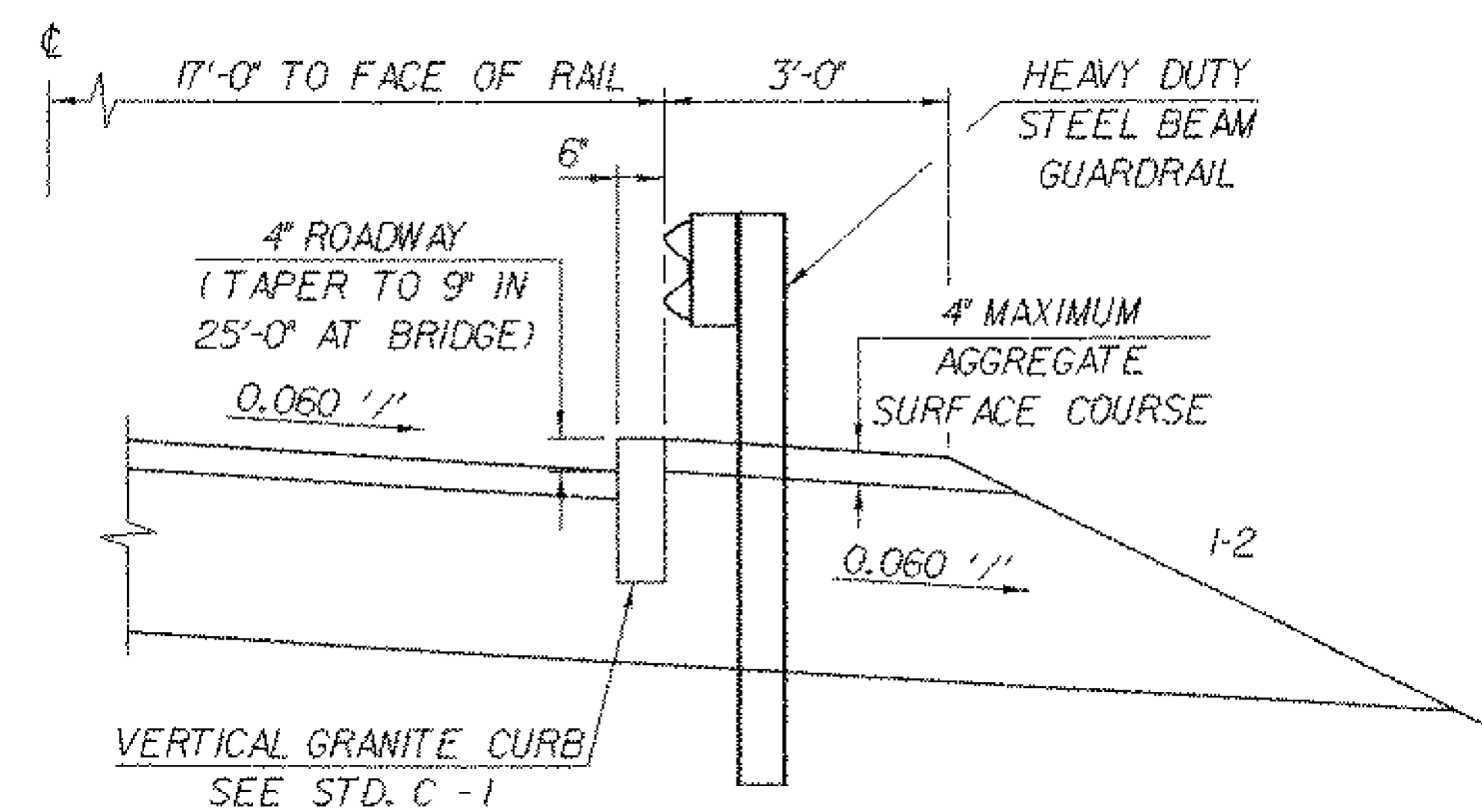
* GRUBBING MATERIAL SHALL NOT BE PLACED ON THE STONE FILL IN THE AREA UNDER THE BRIDGE. WHENEVER CHANNEL SLOPE INTERSECTS ROADWAY SUBBASE, GRUBBING MATERIAL SHALL BEGIN AT THE BOTTOM OF SUBBASE.



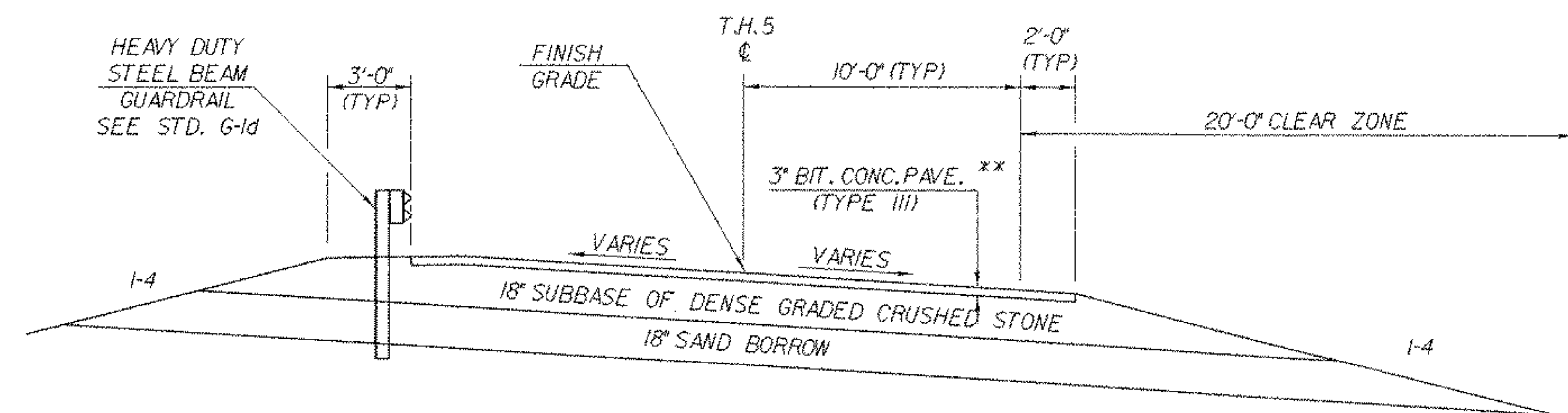
TYPICAL ABUTMENT SECTION
 (NOT TO SCALE)



MAINLINE TYPICAL ROADWAY SECTION (VT 44)
 (NOT TO SCALE)



GRANITE CURB DETAIL
 (NOT TO SCALE)



SIDELINE TYPICAL ROADWAY SECTION (FLAT IRON ROAD)
 (NOT TO SCALE)

COFFERDAM NOTES

1. COFFERDAM LIMITS TO BE DETERMINED BY THE CONTRACTOR.
2. THE PAY LIMITS OF "COFFERDAM EXCAVATION, EARTH" AND "COFFERDAM EXCAVATION, ROCK" SHALL BE 2'-0" OUTSIDE THE PERIMETER OF THE FOOTING, UP TO EXISTING GROUND OR BOTTOM OF SUBBASE, WHICHEVER IS LOWER.
3. ONE FOOT UNDERCUT AS DETERMINED NECESSARY BY THE RESIDENT ENGINEER.
4. IF A COFFERDAM IS CONSTRUCTED WHICH IS LARGER THAN THE INDICATED COFFERDAM EXCAVATION PAY LIMITS, PAYMENT FOR ALL UNCLASSIFIED CHANNEL EXCAVATION, INCLUDING THAT PORTION WHICH IS INSIDE THE COFFERDAM BUT OUTSIDE THE COFFERDAM EXCAVATION PAY LIMITS, WILL BE MADE AT THE CONTRACT UNIT PRICE FOR UNCLASSIFIED CHANNEL EXCAVATION.

** SECOND LIFT: 1 1/2" TYPE III OVER FIRST LIFT: 1 1/2" TYPE III

MATERIAL TOLERANCES	
PAVEMENT	+/- 1/4" (TOTAL THICKNESS)
BASE COURSE	+/- 1/2"
SUBBASE	+/- 1"
SAND BORROW	+/- 1"
GRANULAR BORROW	+/- 1"

SHEET NAME: TYPICAL SECTION SHEET		
PROJECT NAME: READING	HIGHWAY NO.: VT 44	BRIDGE NO.: 1
PROJECT NUMBER: BRS 0148(6)S	OVER: THE MILL BROOK	
FILE NAME: /PW/85e034/se034typ.dgn	PLOT DATE: 17-FEB-2006	
PROJECT MANAGER: R. WHITCOMB	DRAWN BY: J. GILMORE	
DESIGNED BY: C. CARLSON	IPARM NAME: se034typ.i	
BRIDGE SHEET NUMBER:	SHEET 3 OF 83	