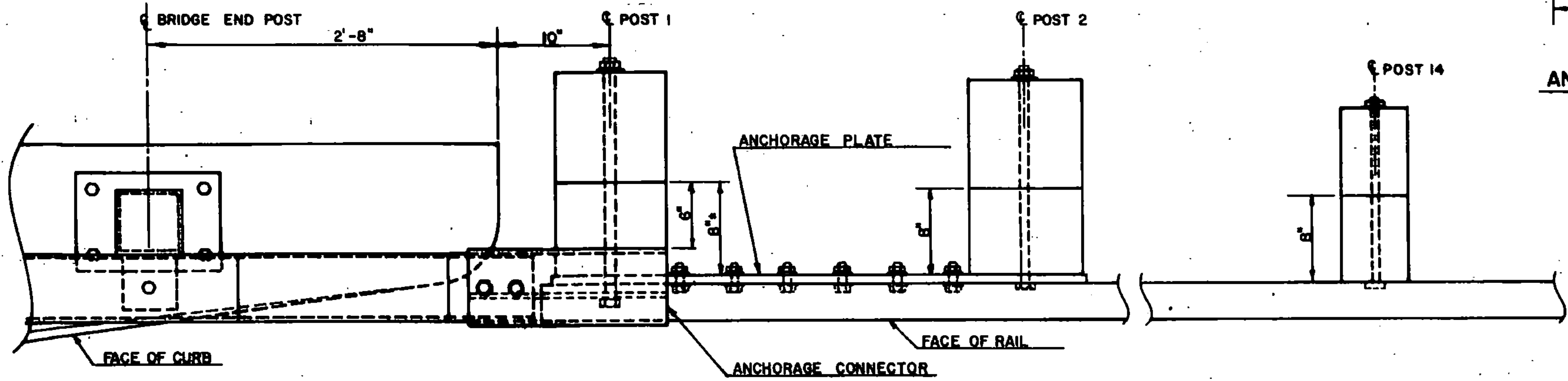
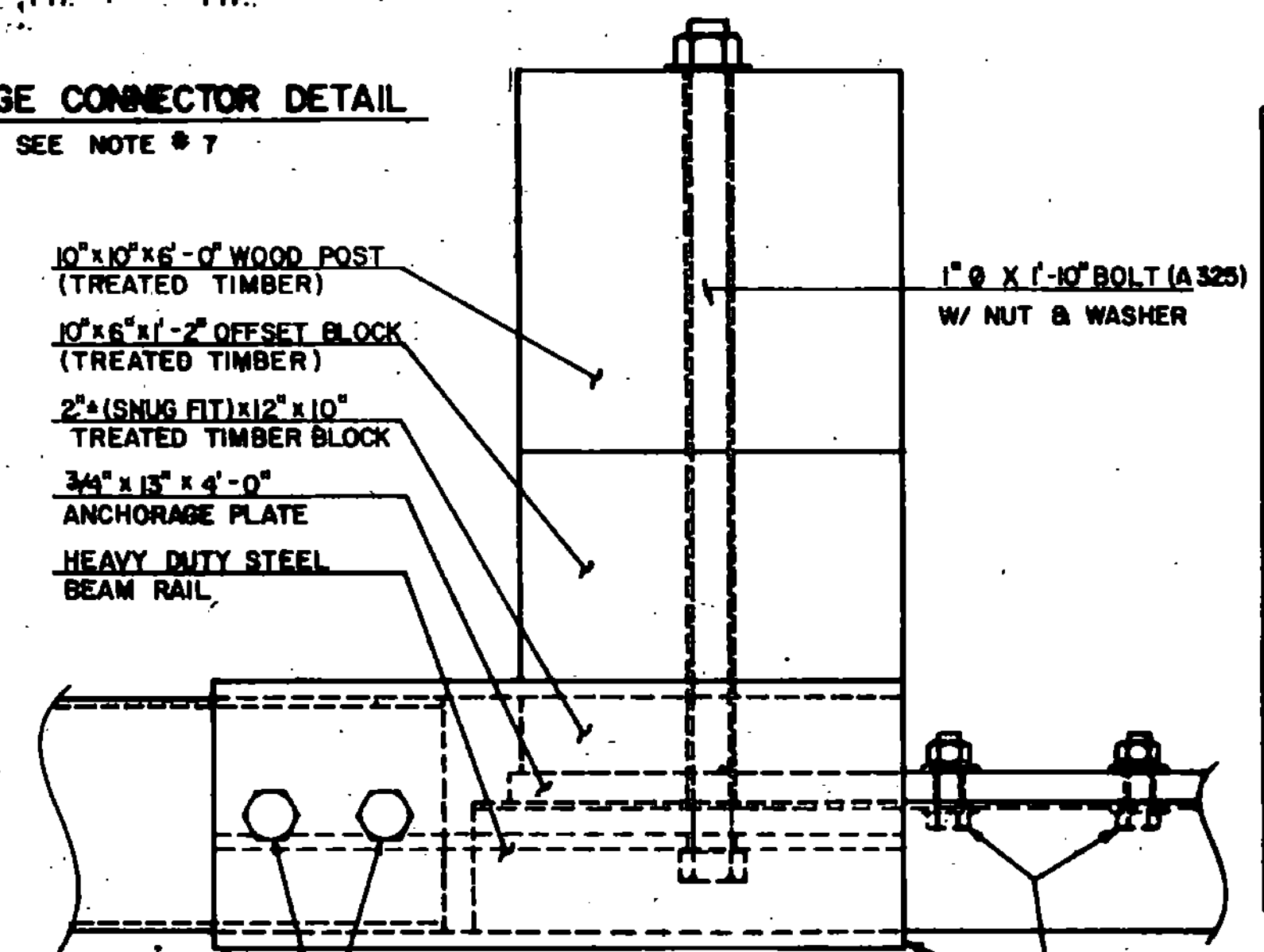


- NOTES**
- REFER TO STANDARD G-1 FOR DETAILS OF APPROACH GUARD RAIL.
  - APPROACH RAIL SPLICES SHALL LAP IN DIRECTION OF TRAFFIC FLOW.
  - ANCHORAGE CONNECTOR AND ANCHORAGE PLATE SHALL BE ASTM A 36 STEEL GALVANIZED TO ASTM A 123 AFTER FABRICATION.
  - REFER TO STANDARD SB-R4A-82 FOR NOTES AND DETAILS OF BRIDGE RAILING.
  - GUARD RAIL APPROACH SECTION-TYPE I & II SHALL INCLUDE ANCHORAGE PLATE, ANCHORAGE CONNECTOR, RAIL, POSTS, BLOCKS, AND ATTACHMENT HARDWARE.
  - APPROACH RAILING SHALL BE HEAVY DUTY STEEL BEAM FOR 60'-0" FROM THE C OF POST I FOR TYPE I AND 12'-6" FROM THE C OF POST I FOR TYPE II.
  - ALLOWABLE DIMENSIONAL TOLERANCE FOR BENT SECTIONS IS ±1/16 OF AN INCH.



**ANCHORAGE CONNECTOR DETAIL**  
SEE NOTE # 7

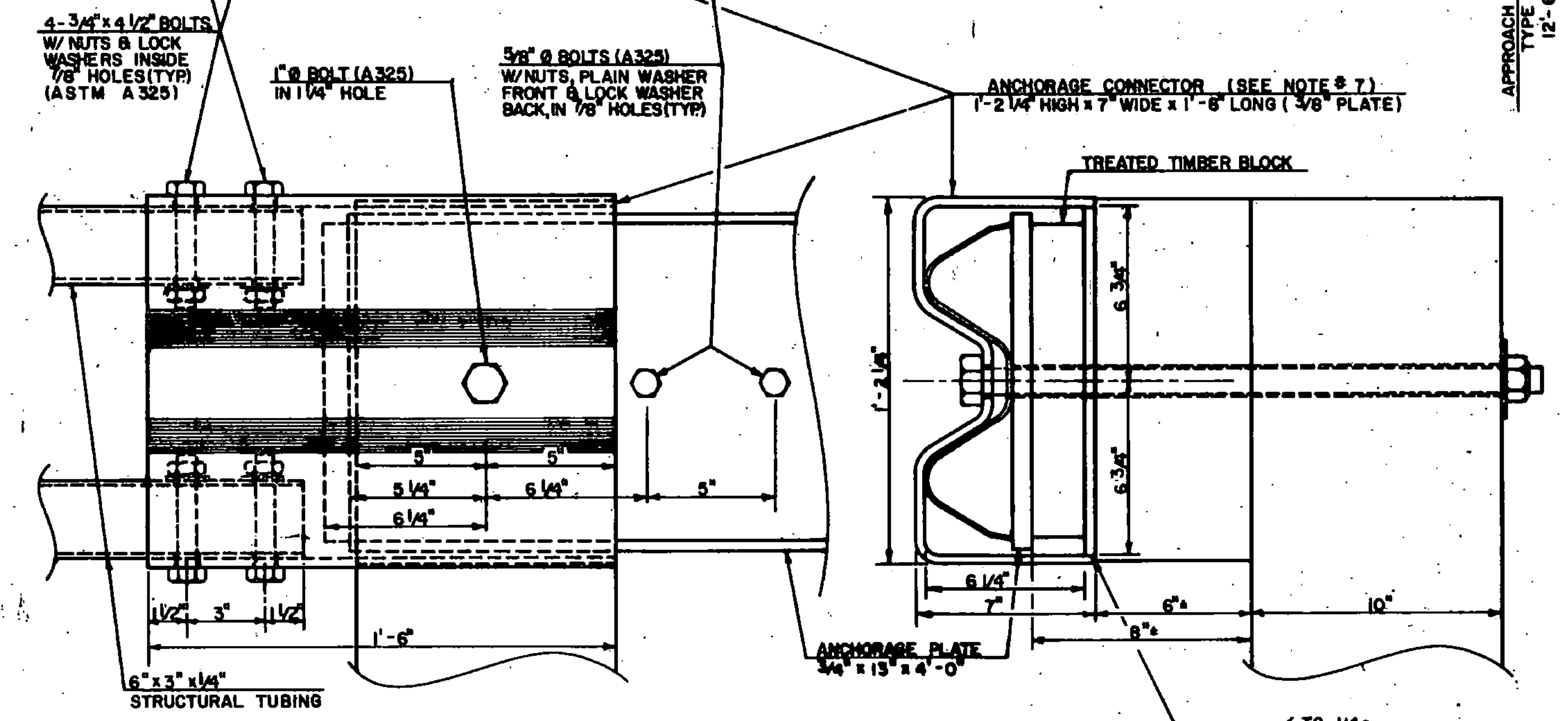
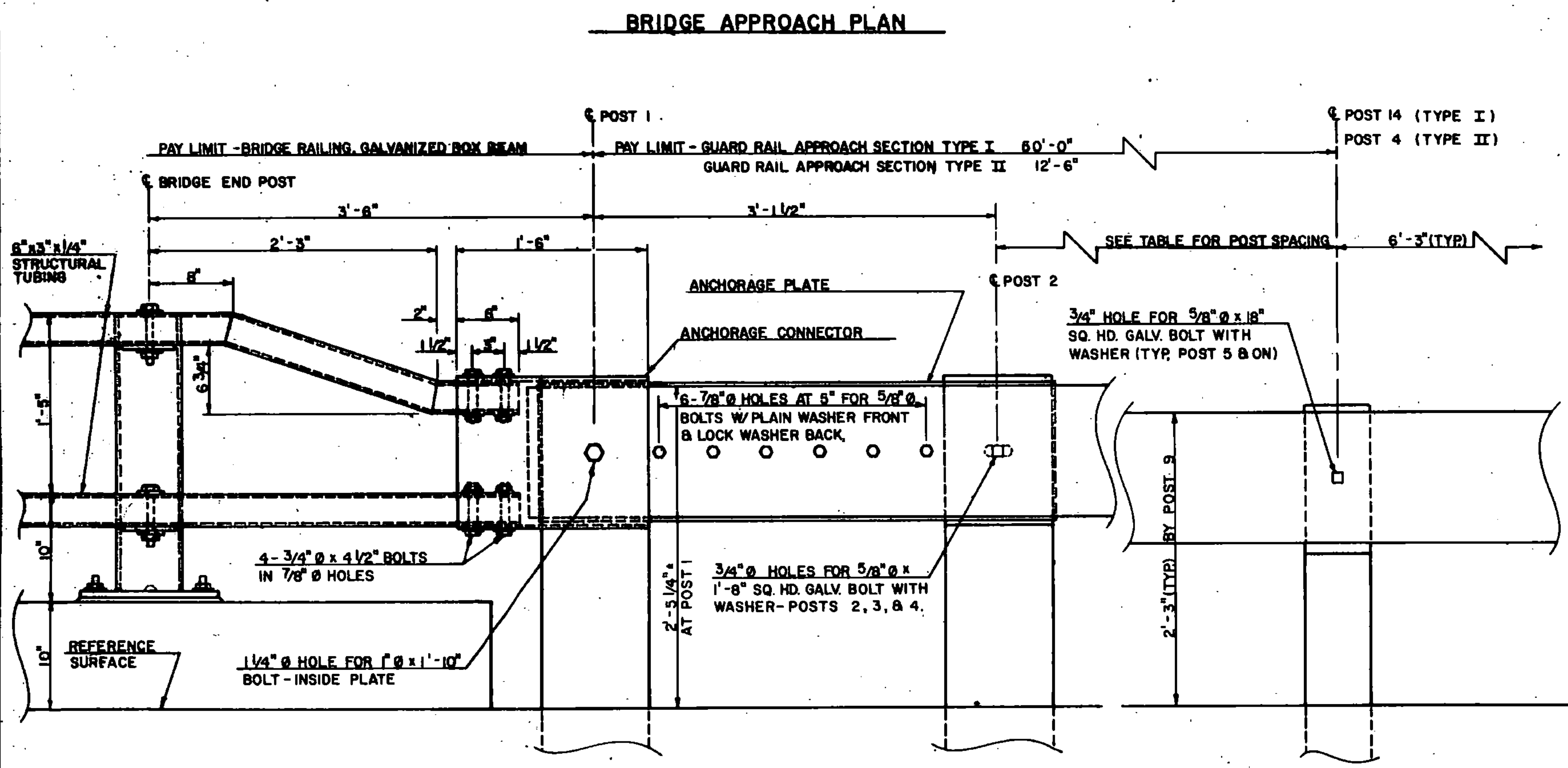


**GUARD RAIL APPROACH SECTION TYPE I**

POST NO.	POST SIZE	OFFSET BLOCK	SPACING	
END POST				
1	10" x 10"	10" x 6"	3'-6"	GUARD RAIL APPROACH SECTION TYPE I, 50'-0"
2	10" x 10"	10" x 6"	3'-1 1/2"	
3	10" x 10"	10" x 6"	3'-1 1/2"	
4	10" x 10"	10" x 6"	3'-1 1/2"	
5	8" x 8"	8" x 8"	3'-1 1/2"	
6	8" x 8"	8" x 8"	3'-1 1/2"	
7	8" x 8"	8" x 8"	3'-1 1/2"	
8	8" x 8"	8" x 8"	3'-1 1/2"	
9	6" x 8"	6" x 8"	3'-1 1/2"	
10	6" x 8"	6" x 8"	4'-2"	
11	6" x 8"	6" x 8"	4'-2"	
12	6" x 8"	6" x 8"	4'-2"	
13	6" x 8"	6" x 8"	6'-3"	
14	6" x 8" (TYP)	6" x 8" (TYP)	6'-3" (TYP)	

**GUARD RAIL APPROACH SECTION TYPE II**

POST NO.	POST SIZE	OFFSET BLOCK	SPACING	
END POST				
1	10" x 10"	10" x 6"	3'-6"	GUARD RAIL APPROACH SECTION TYPE II, 12'-6"
2	10" x 10"	10" x 6"	3'-1 1/2"	
3	8" x 8"	8" x 8"	4'-8 1/4"	
4	8" x 8"	8" x 8"	6'-3" (TYP)	



**BRIDGE APPROACH ELEVATION**

**JOINT DETAILS**

**REVISIONS AND CORRECTIONS**

- ADDED TYPE II APPROACH DETAILS, AND REVISED ANCHORAGE CONNECTOR DETAILS. R. HAUPT 9/7/83
- ADDED DIMENSION TO POST NO. 1. R.S.H. 12-13-84

**APPROVED:**

DECEMBER 28, 1981  
DATE

*William J. Goss*  
CHIEF OF DESIGN

*W.M. Smith*  
STRUCTURES ENGINEER

*S.J. Goss*  
DIRECTOR OF ENGINEERING AND CONSTRUCTION

**GUARD RAIL APPROACH SECTION-TYPE I & TYPE II**



**STANDARD SB-R4B-82**