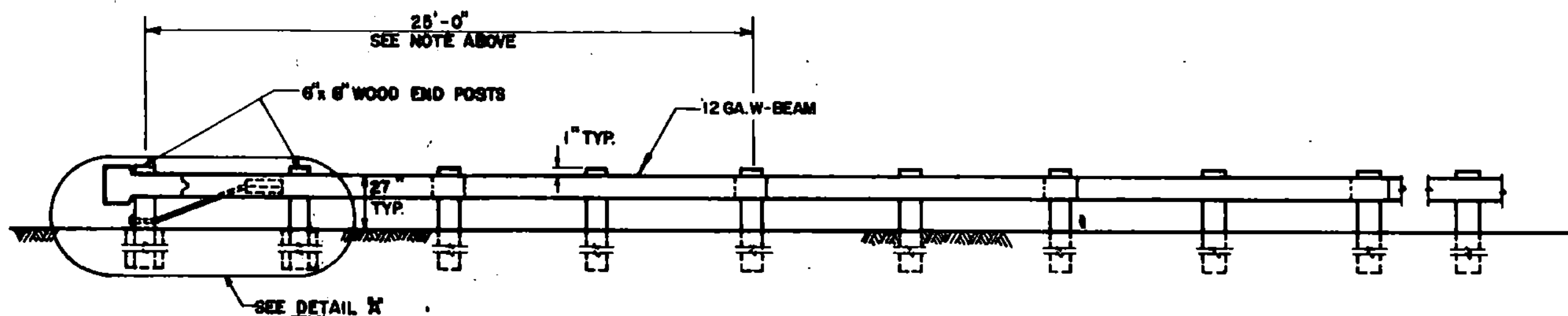
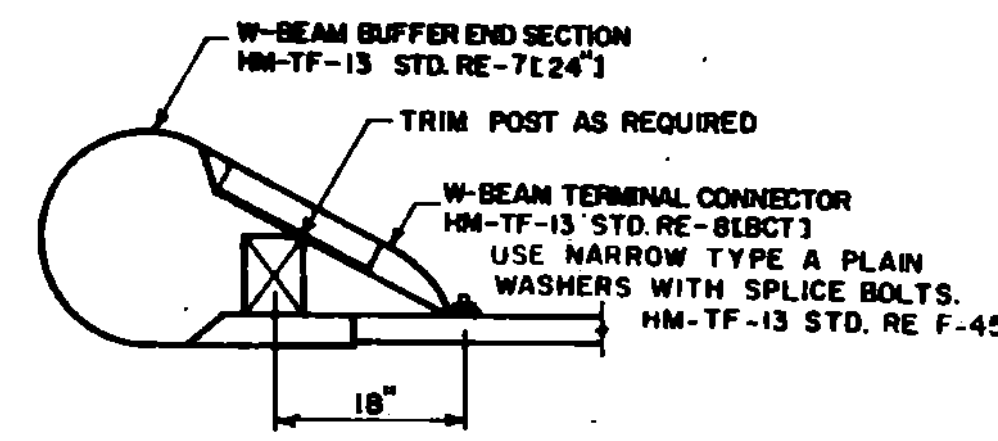


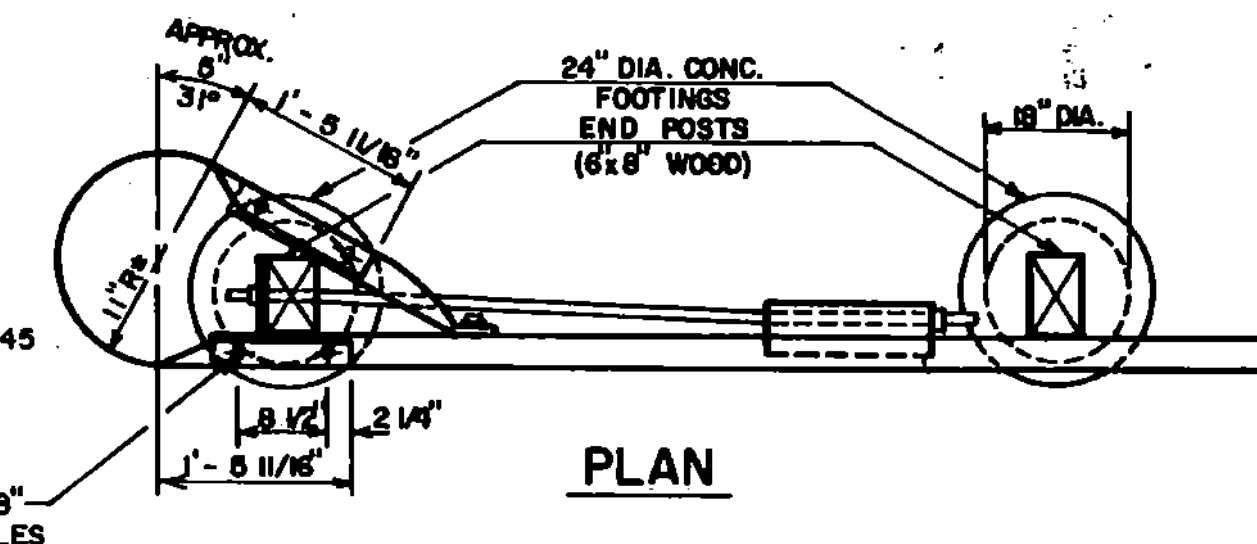
PLAN



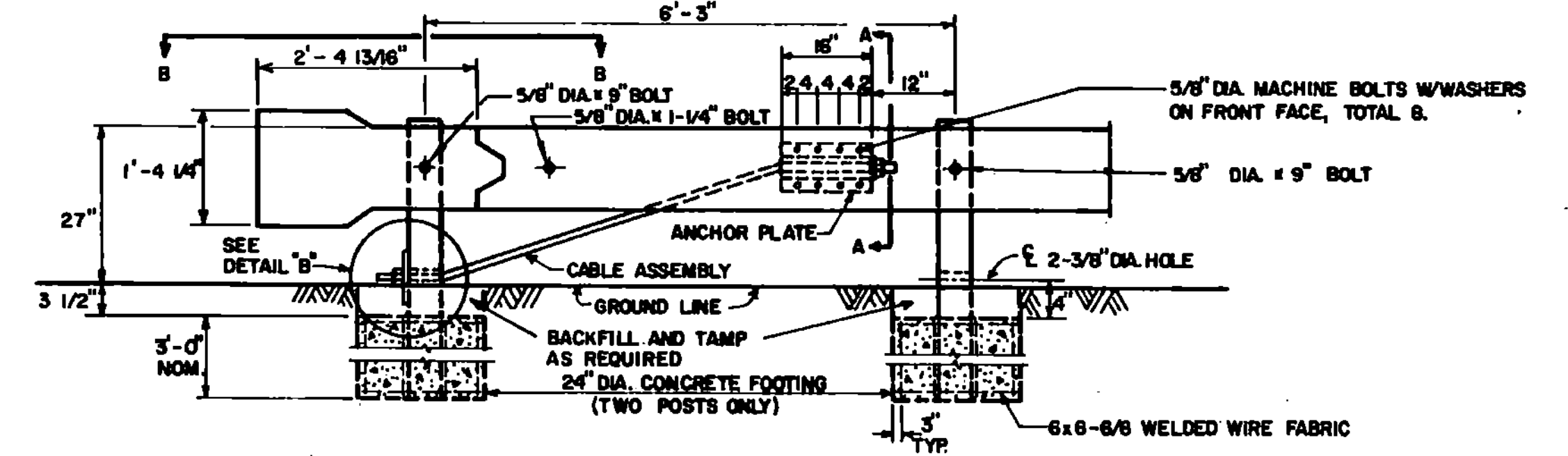
ELEVATION



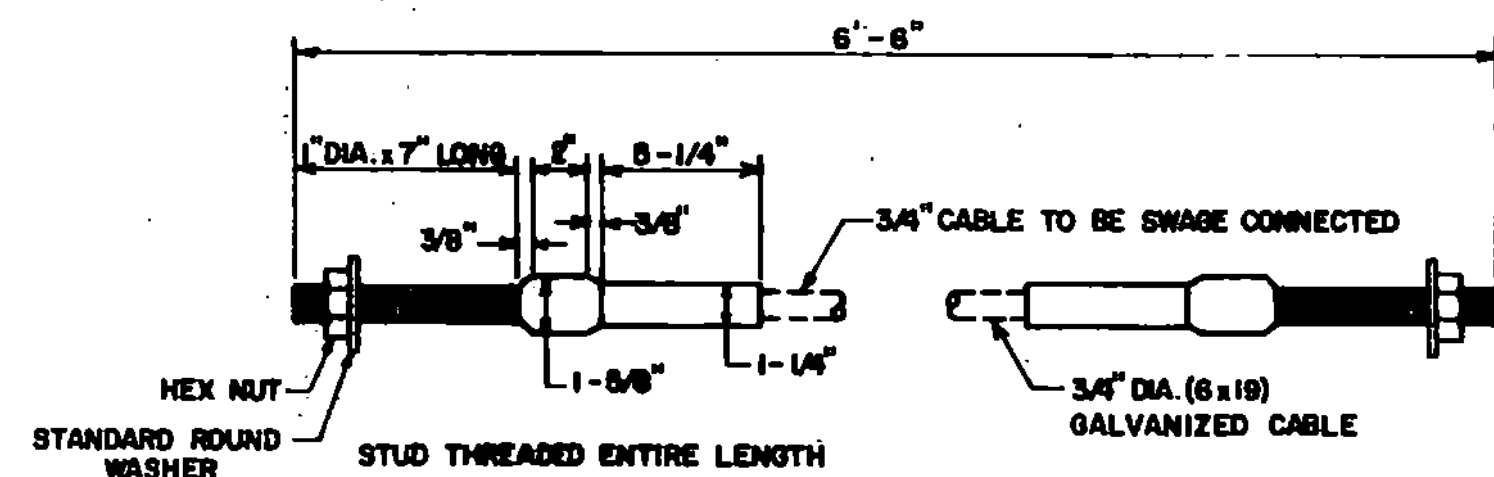
VIEW B-B



PLAN



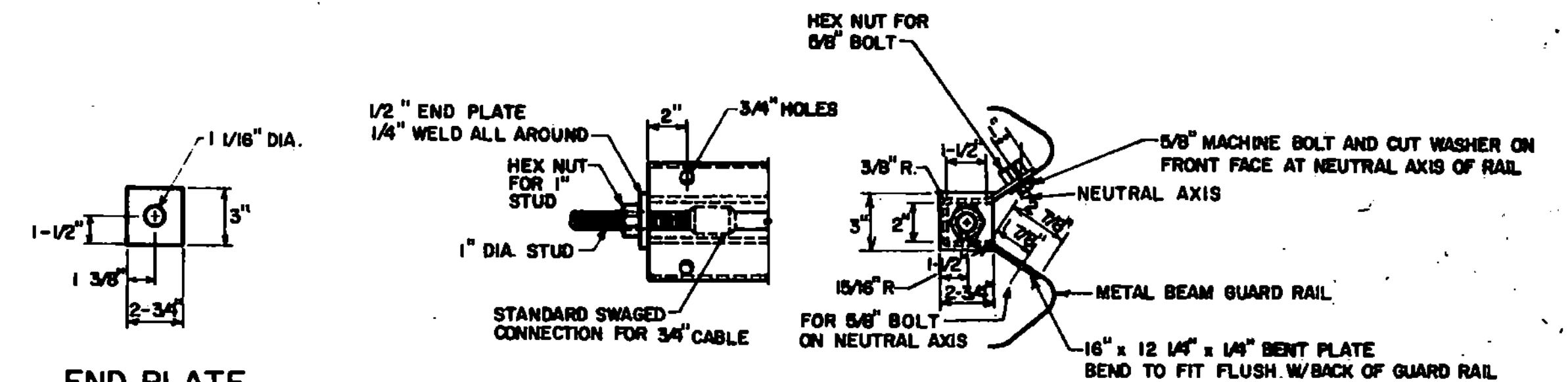
ELEVATION
DETAIL "A"



CABLE ASSEMBLY

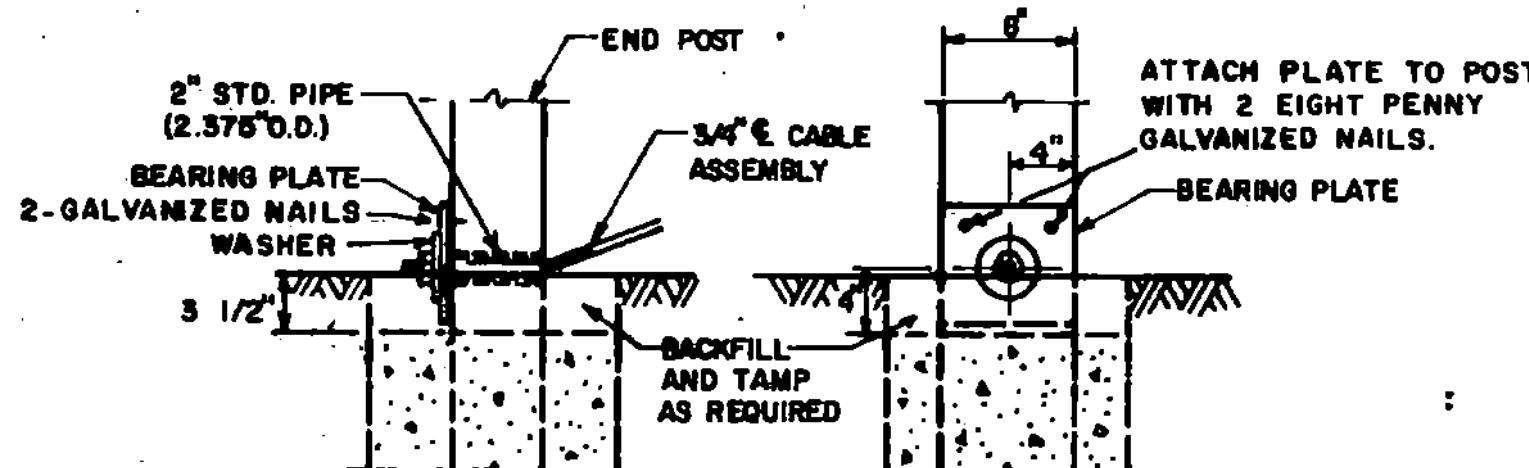
NOTES

- OTHER ANCHOR CABLE ASSEMBLIES MAY BE USED. MINIMUM BREAKING STRENGTH OF ASSEMBLY SHOULD BE 40000 LBS.
- CONCRETE FOOTINGS ARE CLASS B. IN SANDY FILL AREAS, CONSIDERATION TO INCREASING SIZE OF END FOOTING IS SUGGESTED.
- A DOUBLE WRAP OF ASPHALT TREATED FELT AROUND END POSTS BEFORE CONCRETE PLACEMENT WILL FACILITATE REPLACEMENT OF DAMAGED POSTS.
- STANDARD SHEET G-1 WILL BE USED IN CONJUNCTION WITH THIS STANDARD.
- FLAT PLATE WASHERS ARE NOT USED ON NEW INSTALLATIONS. ON RETROFIT INSTALLATIONS THE FLAT PLATE WASHERS MUST BE OMITTED WITHIN THE 37'-6" PARABOLIC SECTION TO ENSURE PROPER PERFORMANCE UNDER IMPACT.
- FOR ADDITIONAL DETAILS ON HARDWARE SEE THE LATEST EDITION OF AASHTO-AGC-ARTBA PUBLICATION "A GUIDE TO STANDARDIZED HIGHWAY BARRIER RAIL HARDWARE."

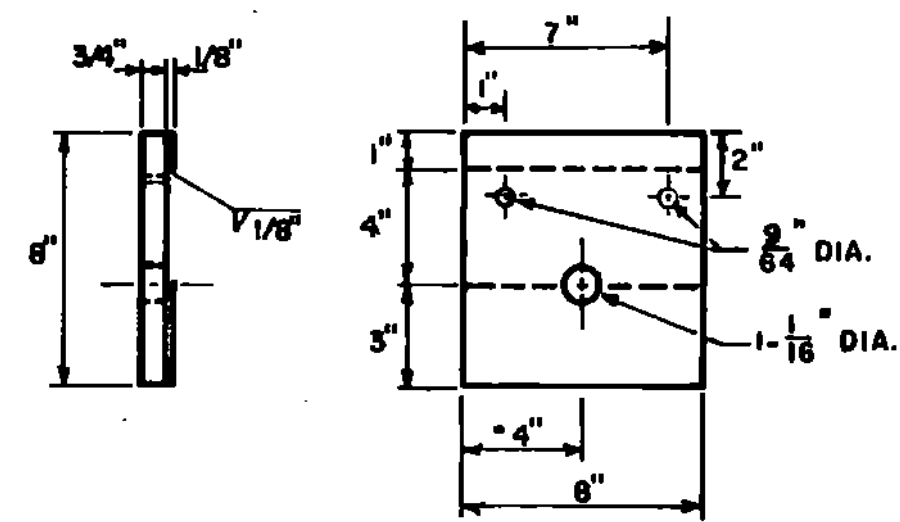


END PLATE

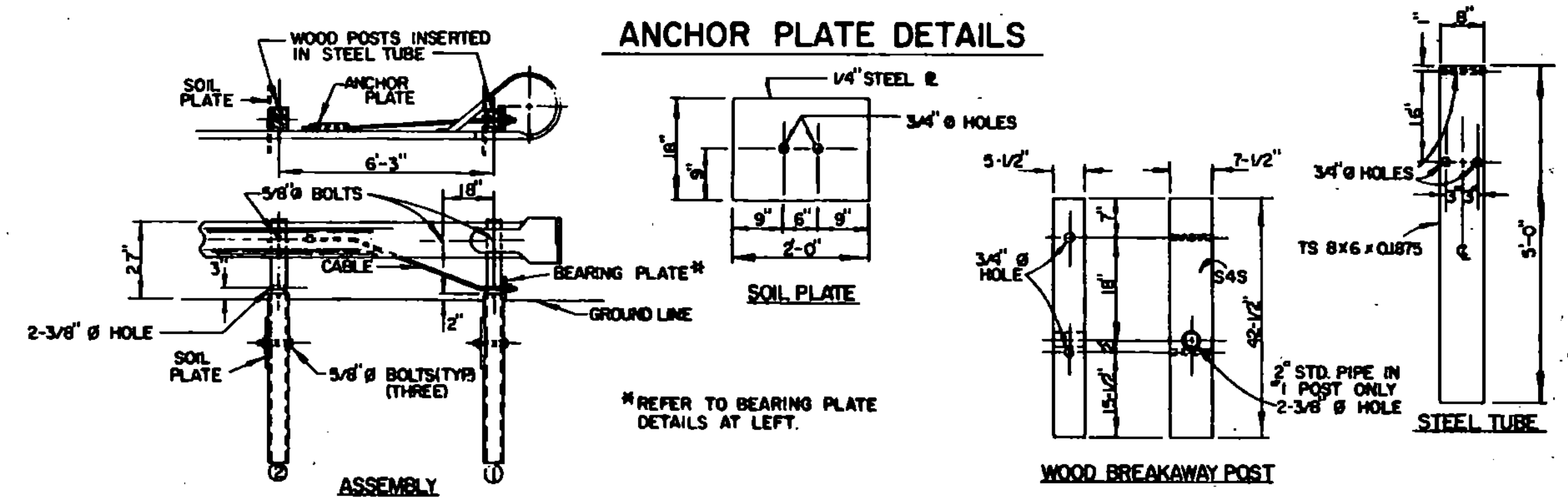
SECTION A-A



DETAIL "B"



BEARING PLATE DETAILS



ANCHOR PLATE DETAILS

ALTERNATE FOUNDATION DETAILS

REVISIONS AND CORRECTIONS
 APR 21, 1977 - BREAKAWAY DETAIL LOWERED TO GROUND LINE.
 JAN 19, 1981 - ALTERNATE FOUNDATION DETAILS ADDED; MISCELLANEOUS CLARIFICATION OF NOTES AND DETAILS.
 AUG 12, 1981 - REMOVED BEARING PLATE DETAIL FROM ALTERNATE FOUNDATION DETAILS.
 AUG 27, 1984 - BACK-UP PLATE REQUIREMENT DELETED. NEW NOTE 5 ADDED.
 DEC 21, 1984 - REVISED NOTE 5, NEW NOTE 6 ADDED. REMOVED 28' W-BEAM SECTION.
 OCT 31, 1985 - REVISED TO CONFORM W/86 SPECS.

APPROVED: DATE July 21, 1976
 E. H. Stickney
 CHIEF ENGINEER
 R. O. Munn
 ASST. CHIEF ENGINEER
 Louis E. Jones
 HIGHWAY ENGINEER

BREAKAWAY CABLE TERMINAL
 WITH WOOD POSTS



STANDARD
 G-14