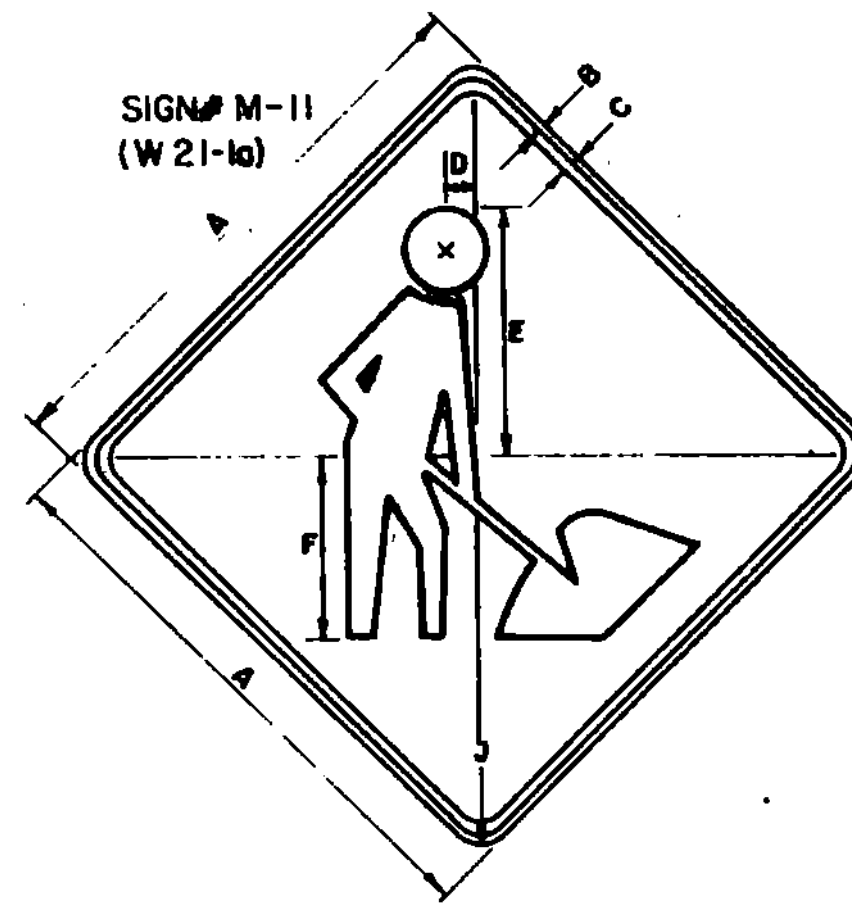
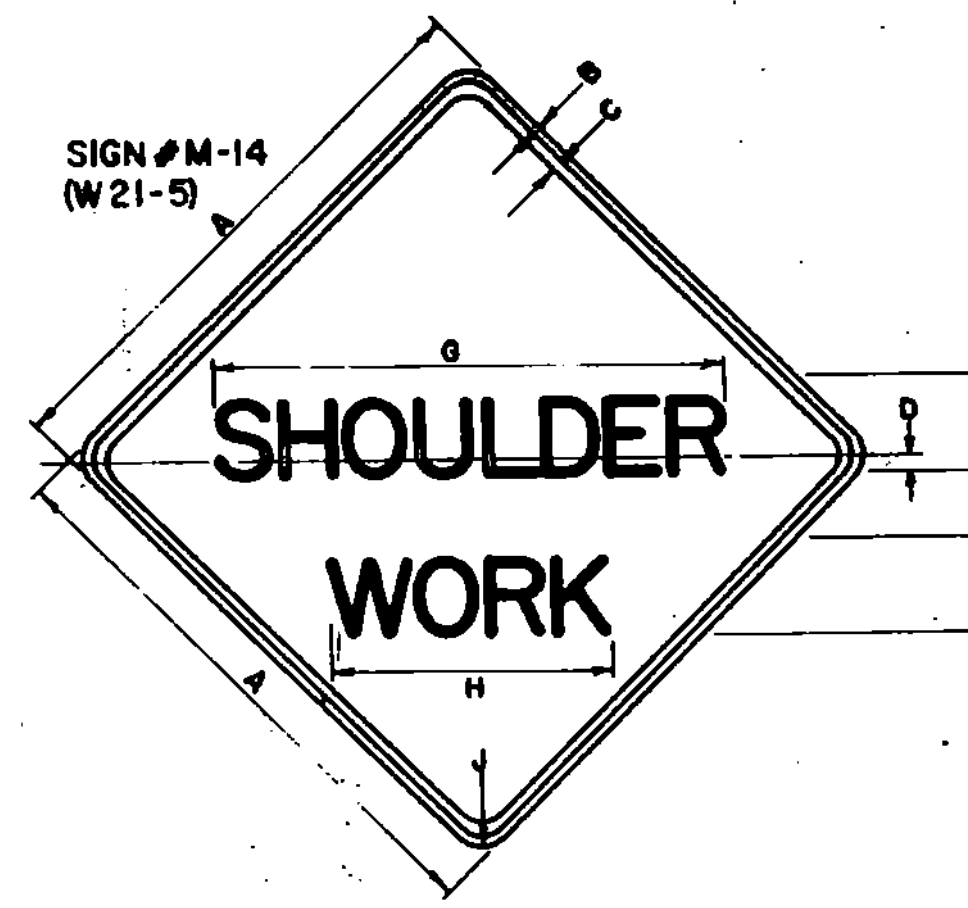


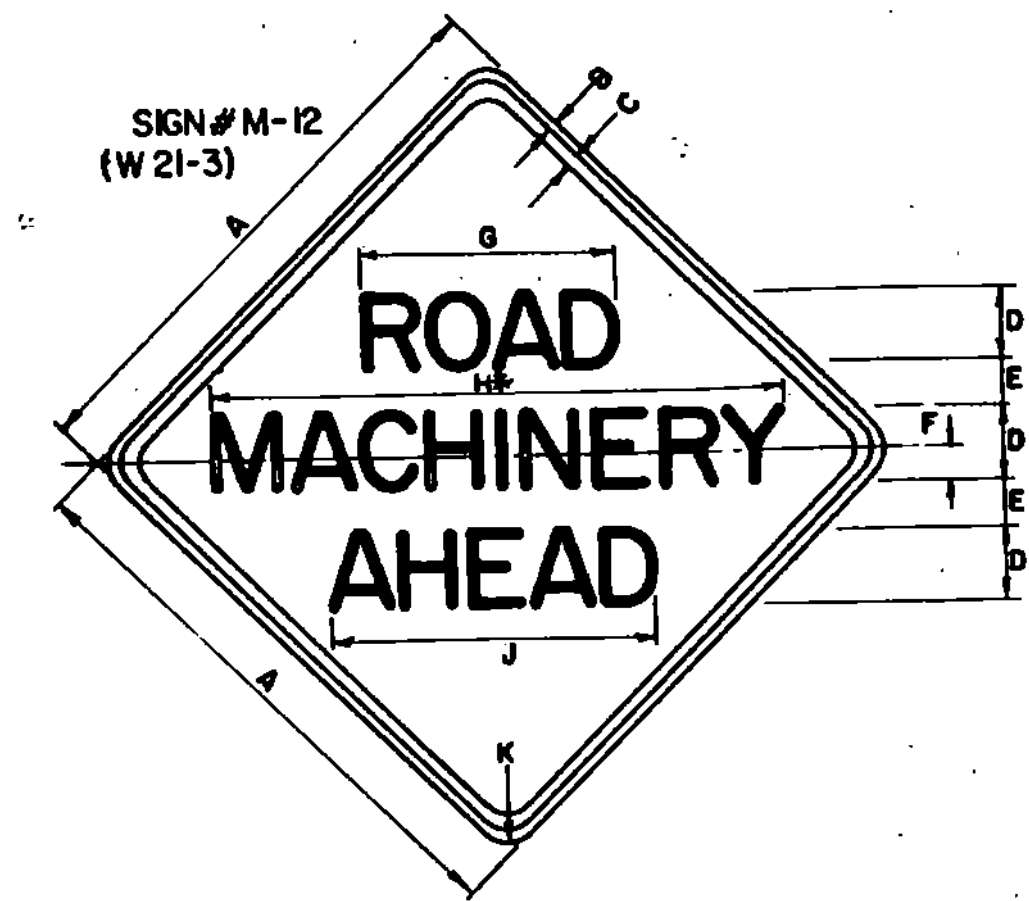
4-LANE DIVIDED HIGHWAY
MEDIAN MAINTENANCE



SIGN	DIMENSIONS (INCHES)							
	A	B	C	D	E	F	G	J
2 LANE	36	5/8	7/8	2-1/4	15-7/8	12		2 1/4
4 LANE	48	3/4	1 1/4	3	22 3/4	16		3

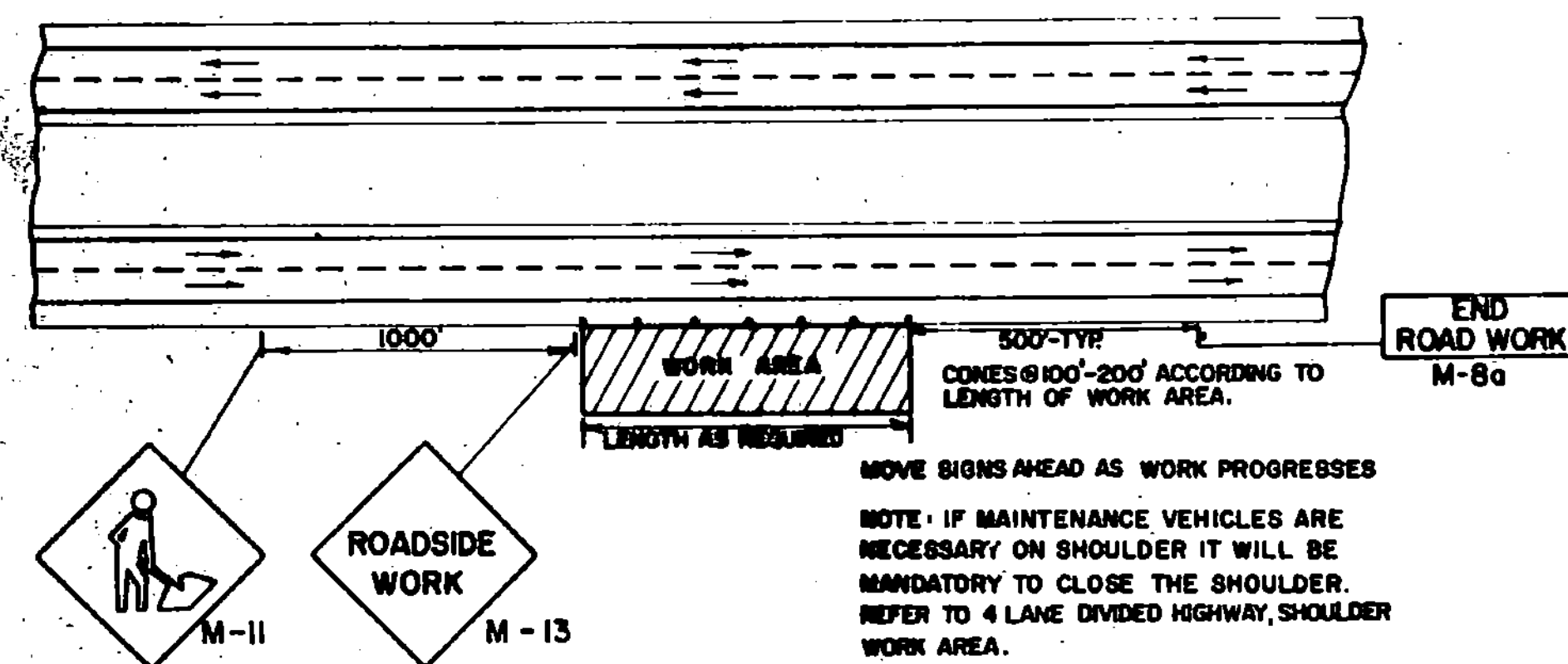


SIGN	DIMENSIONS (INCHES)							
	A	B	C	D	E	F	G	J
2 LANE	36	5/8	7/8	1	5-D	3 1/2	34	17 3/4
4 LANE	48	3/4	1 1/4	1	7-C	4	38 1/2	20 3/4

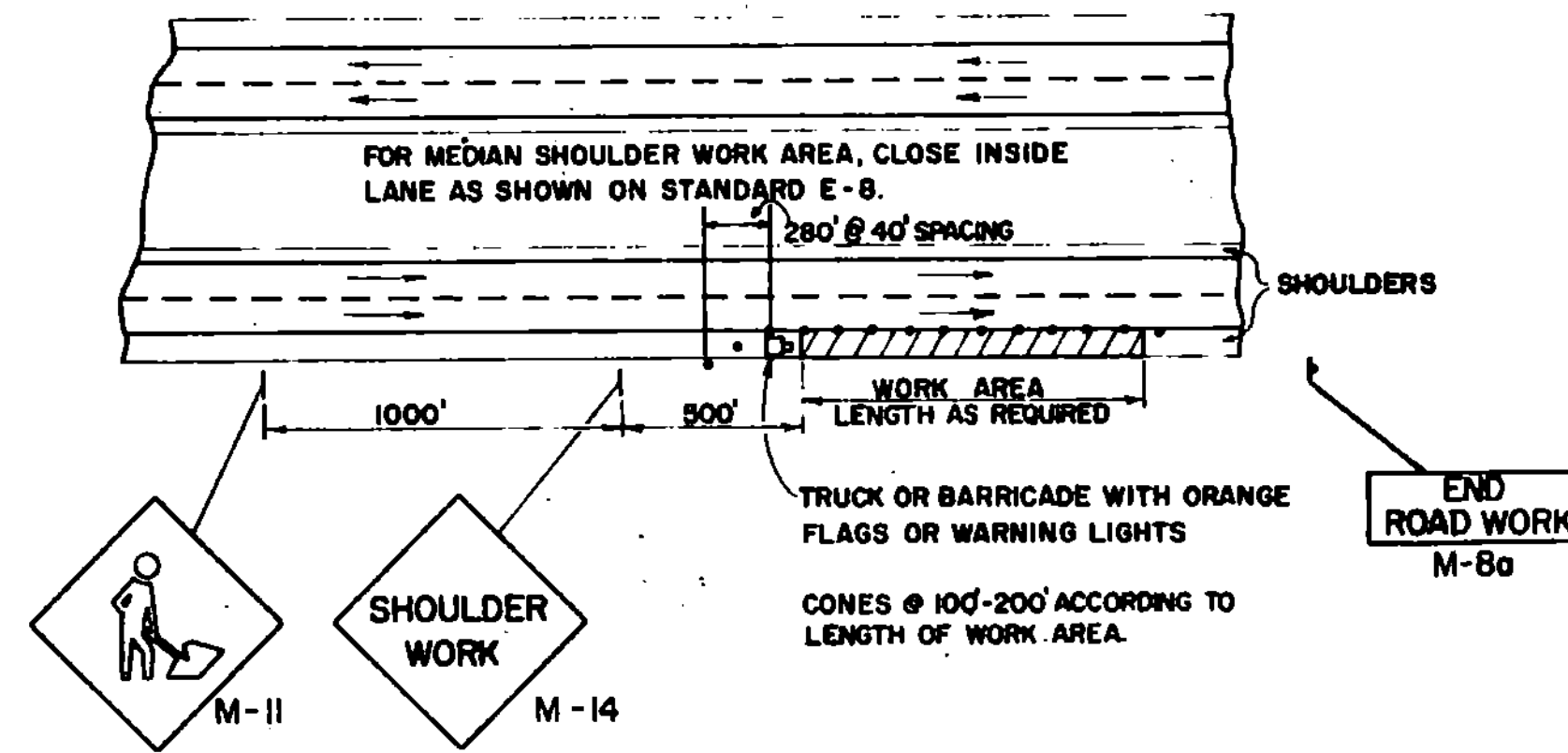


*REDUCE SPACING BY 40%

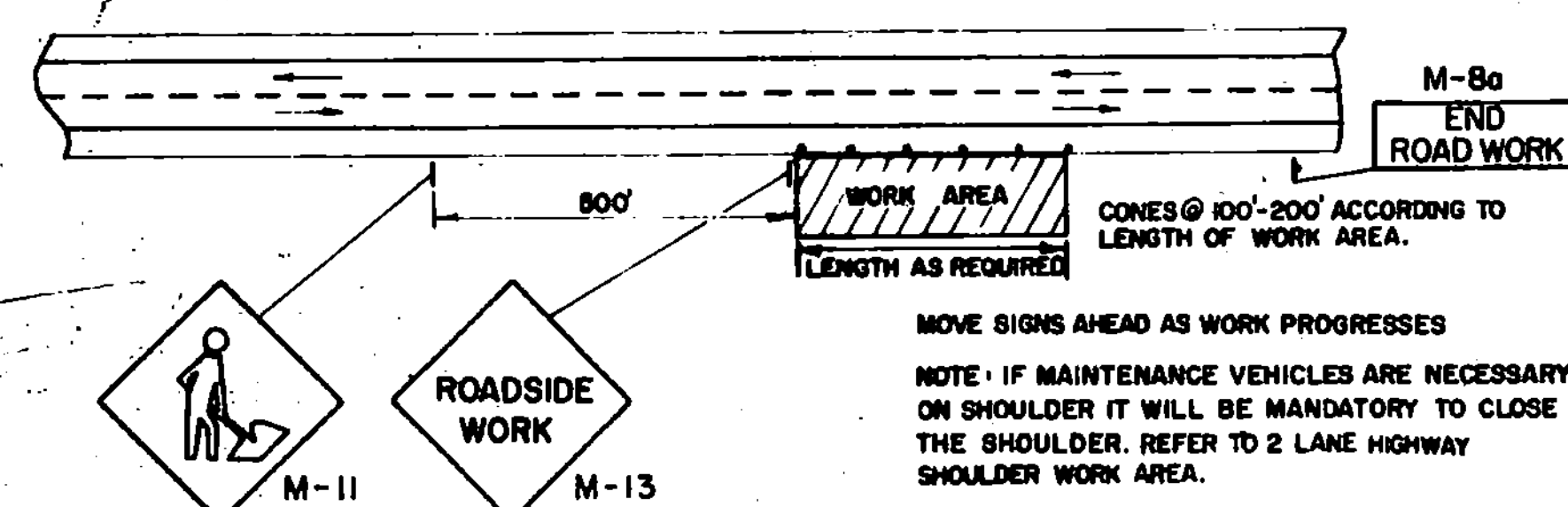
SIGN	DIMENSIONS (INCHES)									
	A	B	C	D	E	F	G	H	J	K
2 LANE	36	5/8	7/8	5-D	4	2 1/2	17 1/4	34 3/4	21 3/4	2 1/4
4 LANE	48	3/4	1 1/4	7-D	5	3 1/2	24 1/2	48 1/2	31	3



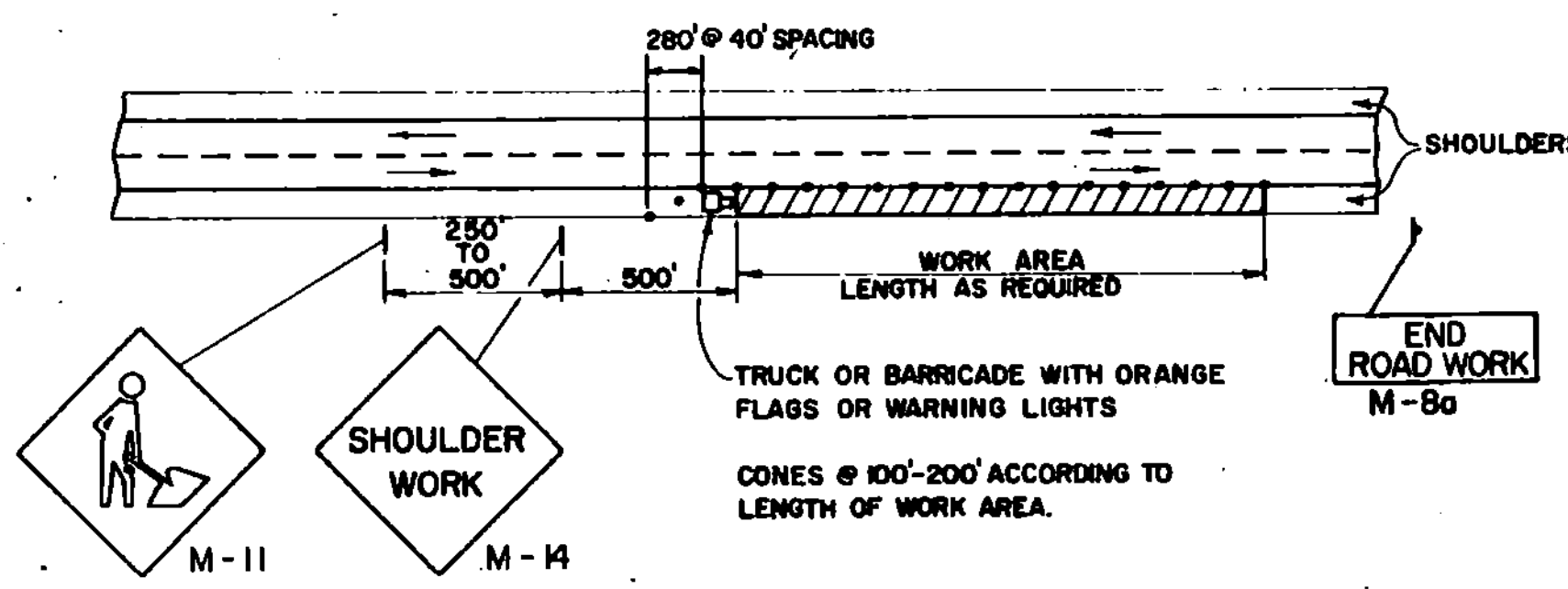
4-LANE DIVIDED HIGHWAY
MAINTENANCE OUTSIDE RIGHT SHOULDER



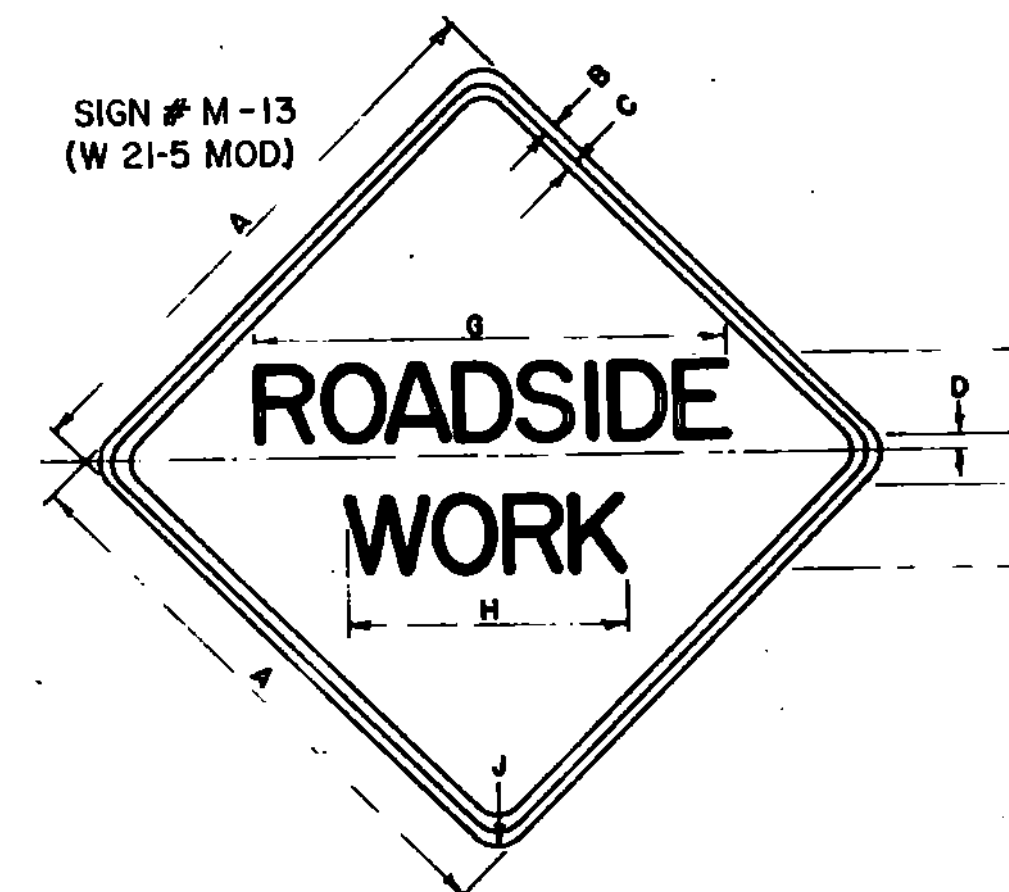
4-LANE DIVIDED HIGHWAY
SHOULDER WORK AREA



2-LANE HIGHWAY
MAINTENANCE OUTSIDE SHOULDER

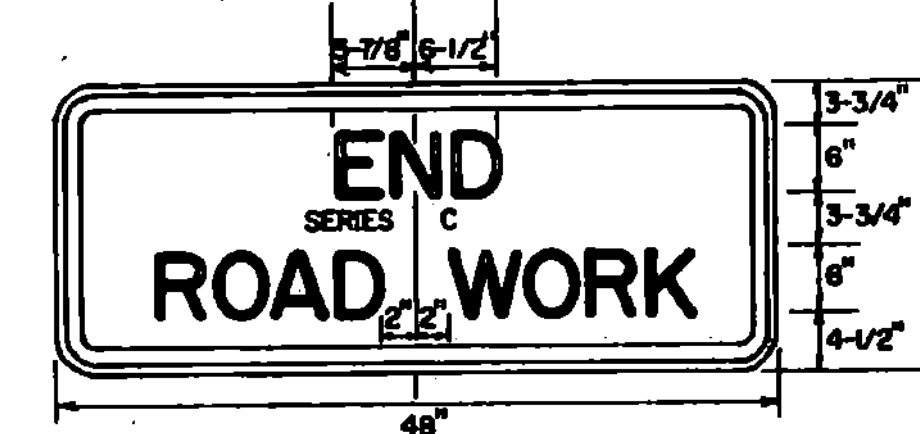


2-LANE HIGHWAY
SHOULDER WORK AREA



SIGN	DIMENSIONS (INCHES)							
	A	B	C	D	E	F	G	J
2 LANE	36	5/8	7/8	1/2	5-D	3 1/2	31 3/4	17 3/4
4 LANE	48	3/4	1 1/4	1	7-C	4	35 1/2	20 3/4

SIGN # M-8a
(G20-2 MOD.)



Reflectization

All reflective material shall consist of encapsulated lens reflective sheeting. The text and borders may be screened, lettering film, or hand painted.

Colors

The warning signs shown on this sheet shall have a black text and border on a reflectorized orange background. The orange shall conform with the standard colors adopted by the American Association of State Highway and Transportation Officials and approved by the U.S. Dept. of Transportation, Federal Highway Administration.

Text Design

Letters, spacing, and text dimensions shall conform with the standard alphabets and design prescribed in the Manual on Uniform Traffic Control Devices.

Specifications

Warning signs shall meet the standard state specifications for traffic signs.

Sign Base Material

The sign base material used for the warning signs shown on this sheet may be any of the following, with minimum thickness as noted:

	36x36	48x48	inches
(1) Flat Sheet Aluminum	0.100	0.125	inches
(2) High Density Overlayed Plywood	5/8	3/4	inches
(3) Galvanized Sheet Steel	14	12	gauge

REVISIONS & CORRECTIONS

- FEB. 29, 1972 - REVISED PER DIRECTION OF THE FEDERAL HIGHWAY ADMINISTRATION.
- MAY 14, 1974 - REFLECTIVE MATERIAL CHANGE.
- JUNE 8, 1977 - REFLECTIVE MATERIAL NOTE CHANGED.
- AUG. 10, 1977 - PERSON WORKING SIGN CHANGED TO SYMBOL.
- DEC. 9, 1981 - MINOR SIGN DIMENSION CHANGES.
- FEB. 6, 1988 - UPDATED TO 1988 SPECIFICATIONS

APPROVED

DATE Jan. 26, 1972
 CHIEF ENGINEER R. W. Arnold
 ASST. CHIEF ENGINEER E. H. Stehney
 HIGHWAY ENGINEER G. M. Lane

TRAFFIC SIGNS
TYPICAL MINOR MAINTENANCE OPERATION
APPROACH SIGNS



STANDARD
E-10