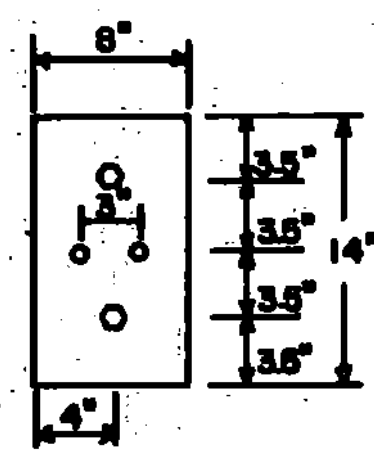
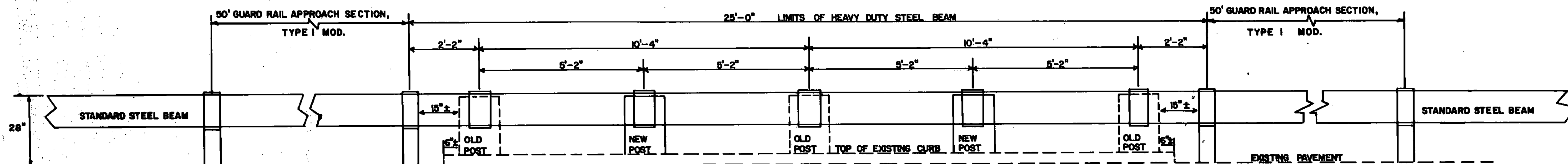
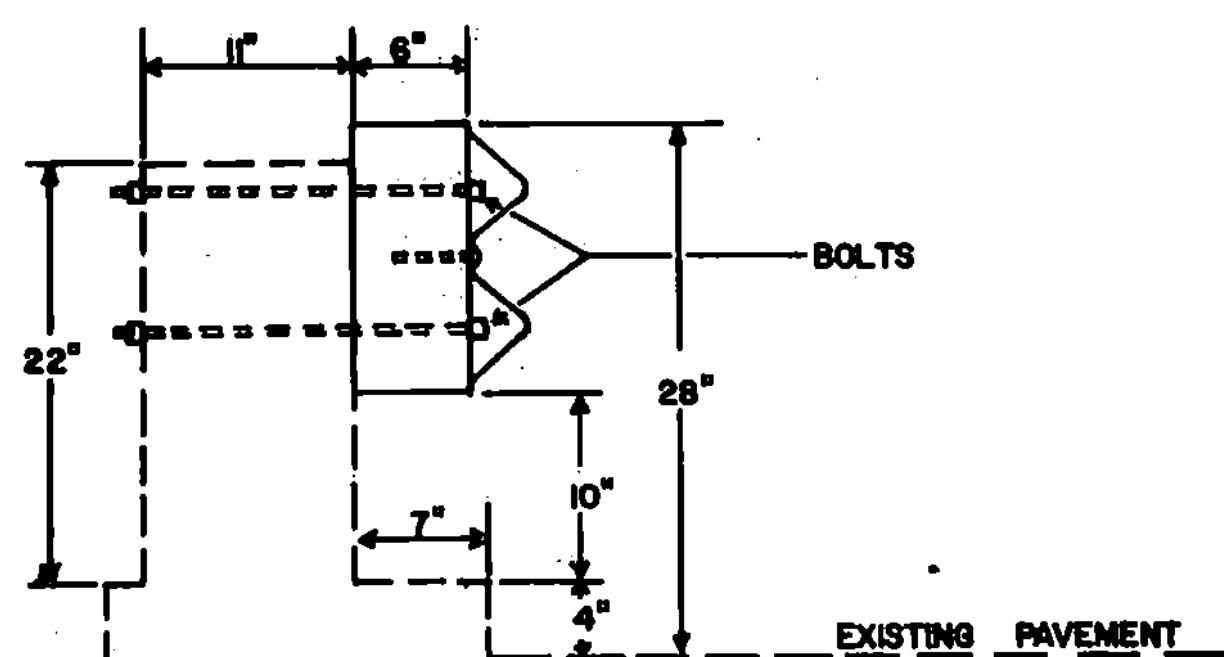


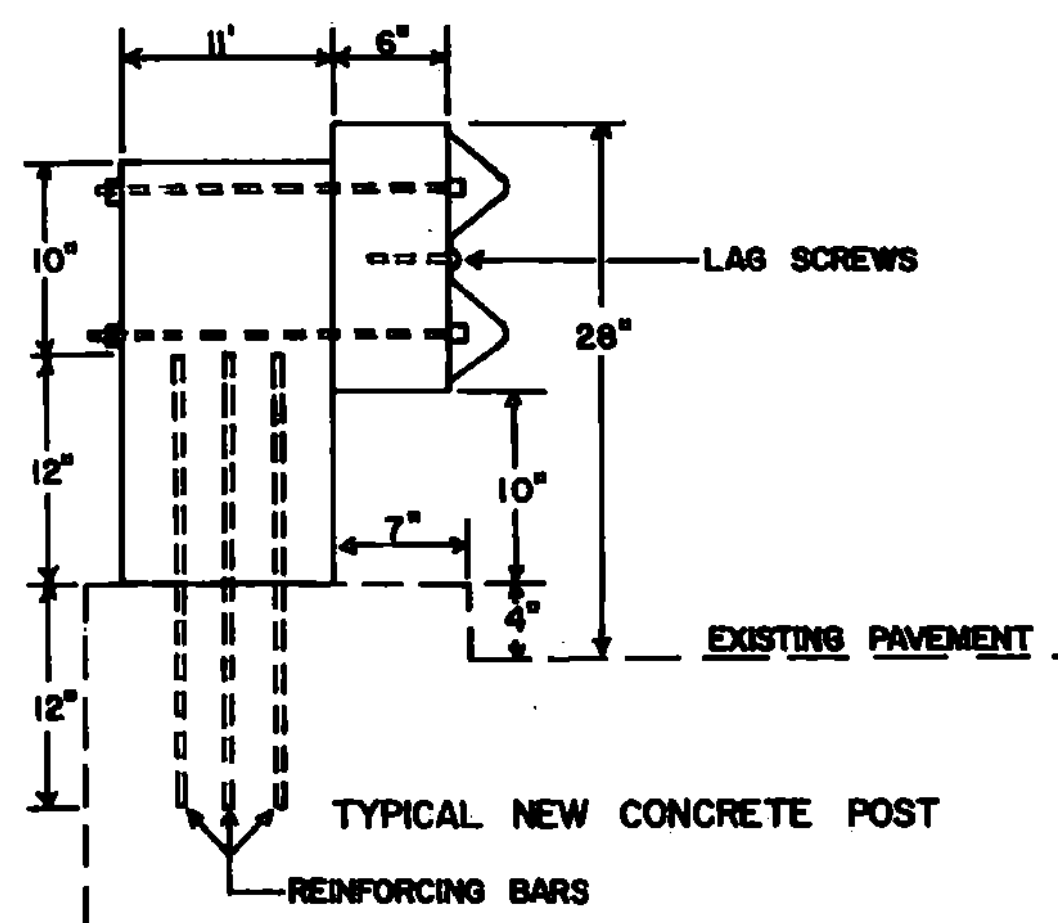
WORCESTER VT. 12 AT MILE MARKER 3.50



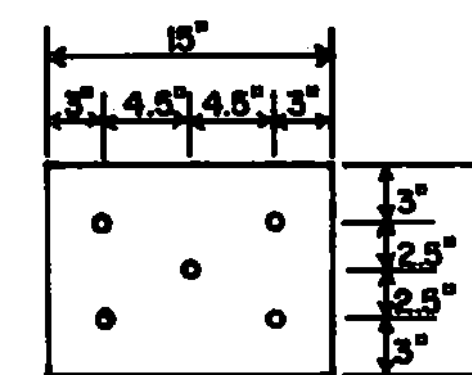
TYPICAL FRONT VIEW OF OFFSET TO BE USED ON CONCRETE POSTS



TYPICAL EXISTING CONCRETE POST



TYPICAL NEW CONCRETE POST



TYPICAL REINFORCING BAR PLACEMENT FOR NEW CONCRETE POST

NOTES:

- 1 ALL WORK AND MATERIALS NECESSARY TO INSTALL THE RAILING SHALL BE PAID FOR UNDER THE ITEM GUARD RAIL, HEAVY DUTY STEEL BEAM.
- 2 ALL EXISTING FITTINGS WILL BE CUT FLUSH WITH POST FACES.
- 3 EXISTING POSTS SHALL BE REPAIRED WITH MORTAR, AS NECESSARY, TO INSURE THAT THE OFFSET BLOCK FITS.
- 4 BOLTS USED TO ATTACH OFFSET BLOCKS TO EXISTING POSTS SHALL BE 3/4" WITH WASHERS, BOLTS TO BE PLACED IN EXISTING POSTS THROUGH 1" DRILLED AND GROUTED HOLES.
- 5 LAG SCREWS TO BE 5/8" X 4" WITH WASHER.
- 6 MATERIAL USED TO CONSTRUCT NEW POSTS SHALL CONFORM TO THE SPECIFICATIONS FOR CONCRETE CLASS B.
- 7 REINFORCING BARS SHALL BE NO. 5 BARS. BARS SHALL BE DRILLED AND GROUTED TO A DEPTH OF AT LEAST 12".
- 8 OFFSET BLOCKS TO BE 6" X 8" X 14" TREATED TIMBER.
- 9 SEE STANDARD SB-R4B-82 FOR GUARD RAIL APPROACH SECTION, TYPE I DETAILS.

WORCESTER

1965 STATEWIDE SAFETY

SHEET 30 OF 200 SHEETS