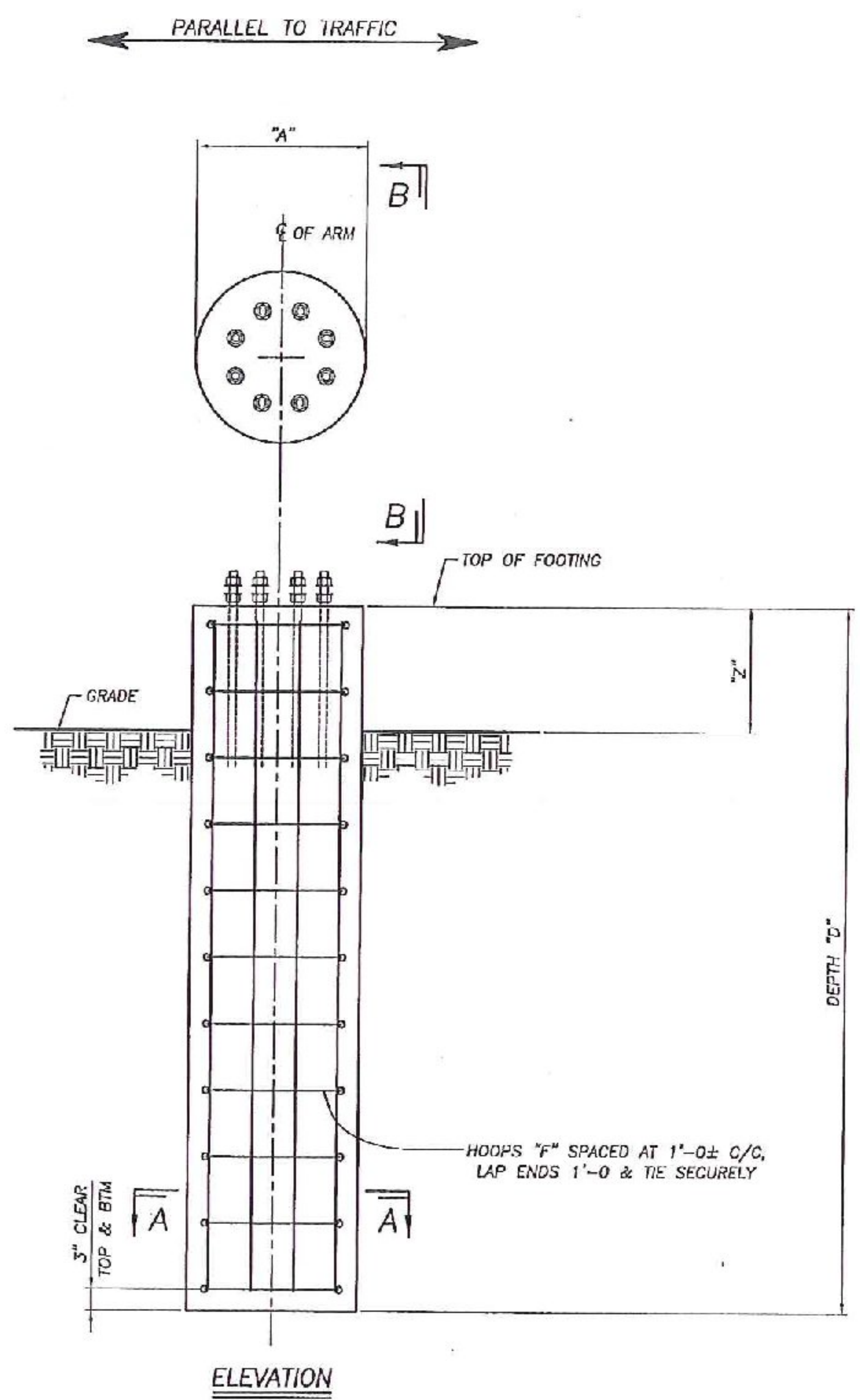
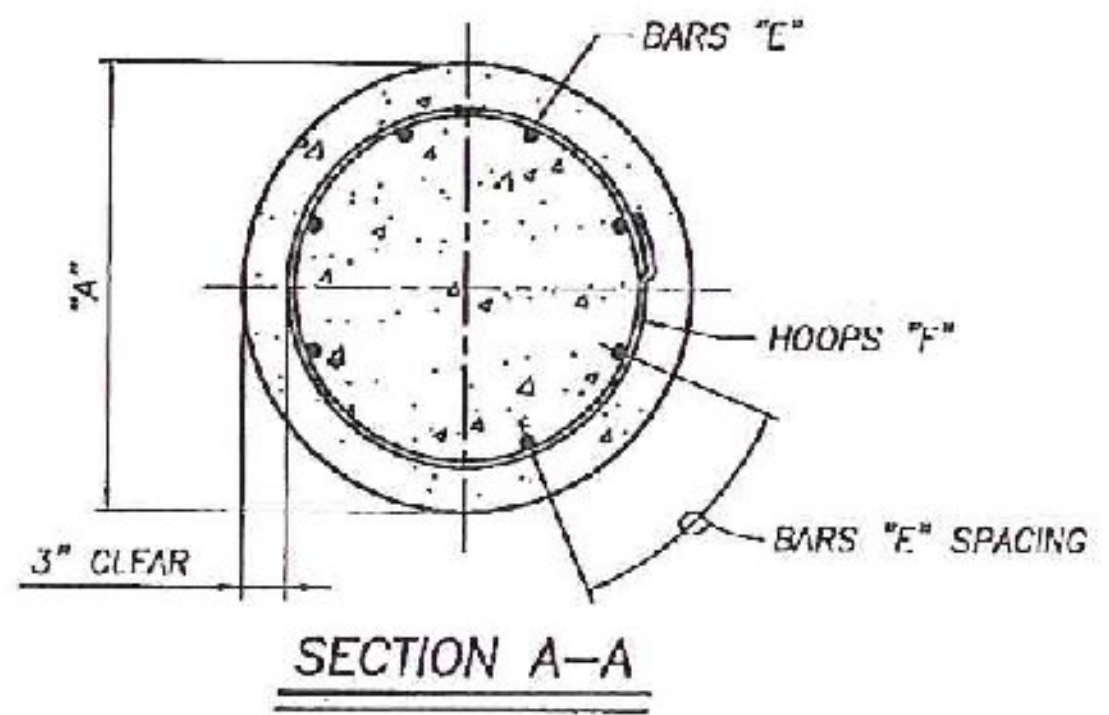
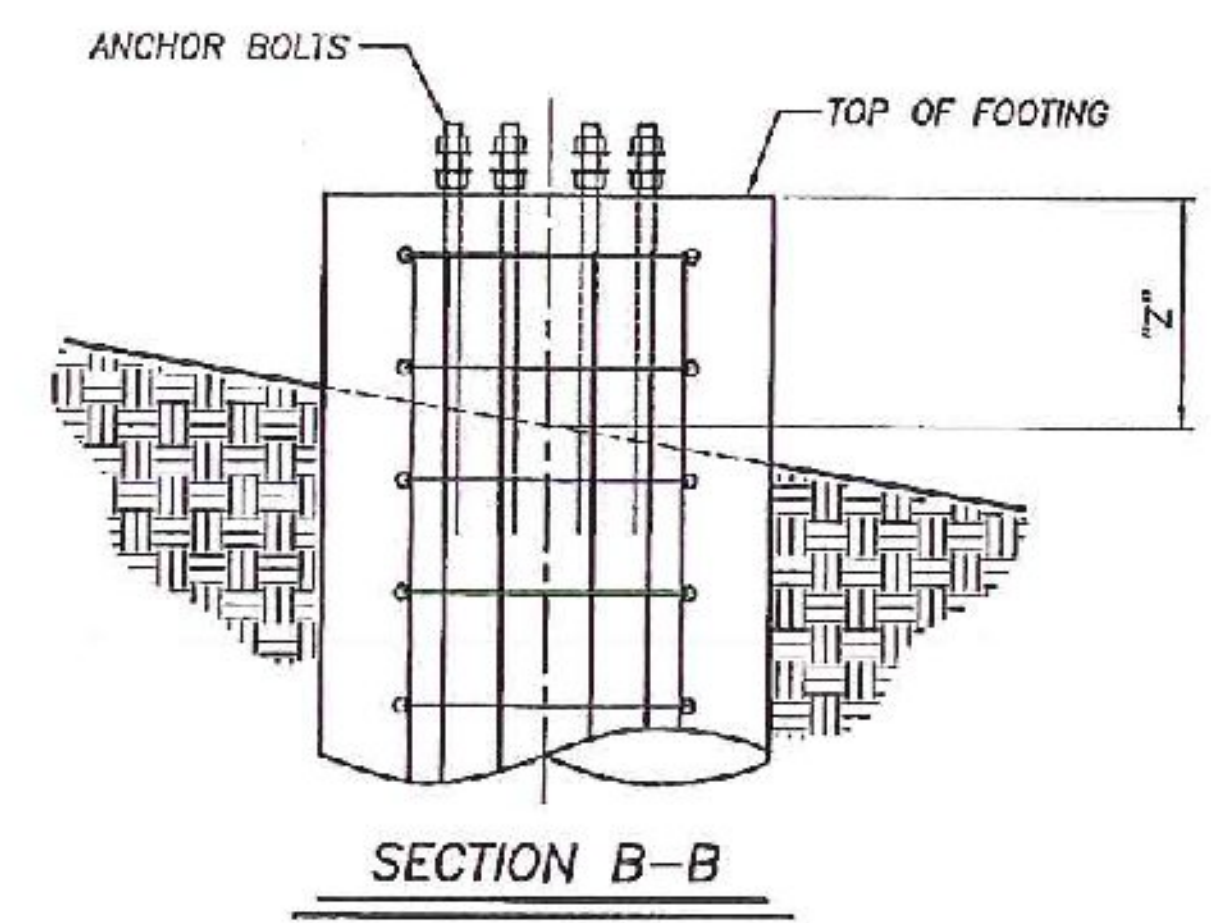


STRUCTURE	STATION	"A"	"D"	BARS "E"	HOOPS "F" * SEE NOTE	CONC/FTG (cu yds)	REINF/FTG (lbs)	"Z"
2	22+32.0 LT	3'-6"	14'-0"	18 - #8 @ 5 1/2" c/c	15 - #4 @ 1'-0"	4.99	748	6"
3	112+12.6 RI	3'-6"	14'-0"	18 - #8 @ 5 1/2" c/c	15 - #4 @ 1'-0"	4.99	748	6"
4	141+97 LT	3'-6"	12'-0"	18 - #8 @ 5 1/2" c/c	13 - #4 @ 1'-0"	4.28	639	6"
5	11+49.5 LT	3'-6"	13'-0"	18 - #8 @ 5 1/2" c/c	14 - #4 @ 1'-0"	4.63	693	6"



SINGLE POLE CANTILEVER FOOTING



GENERAL NOTES

1. CONCRETE TO BE HIGH PERFORMANCE CLASS "B" AND $f'_c=3500$ PSI
2. REINFORCING TO BE ASTM - A615, GRADE 60, DEFORMED, $f_y = 60$ KSI., $f_s = 24$ KSI.
3. REINFORCING TO BE TIED SUFFICIENTLY TO RETAIN ITS PROPER SHAPE DURING PLACEMENT.
4. REINFORCING TO BE HOOKED OR BENT PER ACI CODE.
5. CONTRACTOR TO PROVIDE CONDUIT IN FOOTING AS NECESSARY FOR ELECTRICAL SERVICE.
6. SEE STRUCTURE ERECTION DRAWINGS FOR FOOTING ELEVATIONS & ANCHOR BOLT MARKS, QUANTITIES, & SPACING.
7. CONTRACTOR SHALL BACK FILL AS NECESSARY TO COVER FOUNDATION.

AASHTO 5th Edition Spec's

W/P Walpar, LLC <small>POST OFFICE BOX 28550 BIRMINGHAM ALABAMA 35228 4200 JEFFERSON AVENUE BIRMINGHAM ALABAMA 35221 PHONE (205)-925-4950 FAX (205) 625-7273</small>	STATE:	Vermont
	PROJECT:	Barra City
	PROJ No:	FEGC F 026-1(34) C/2
	COUNTY:	Washington
	ROUTE:	US-302
SUBJECT:	OVERHEAD SIGN SUPPORT CANTILEVER/BUTTERFLY CYLINDRICAL FOOTING DESIGN	
FOR:	F.R. Lafayette, Inc.	
DRAWN BY:	JEFF	DATE: 7/27/11
CHECKED BY:	RRW	DATE: 8/17/11
RELEASE FOR CONSTRUCTION:	<input type="checkbox"/>	DWG NO: C1181-D4

NO.	REVISIONS	DATE	MADE	CHECKED
1	FOR APPROVAL, CH'D CONC SPEC, REVISED CYL DESIGN	4/3/12	BBC	JEFF