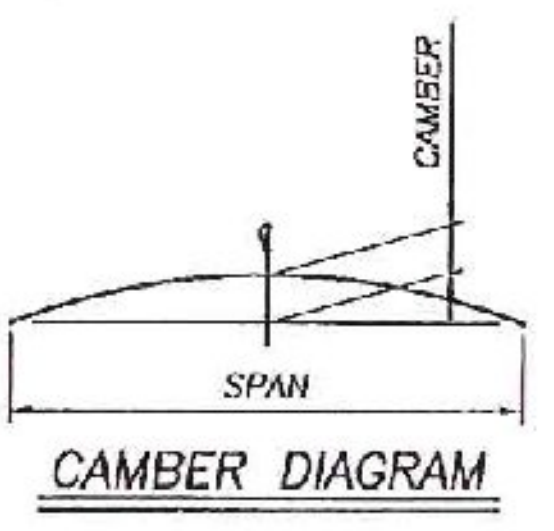
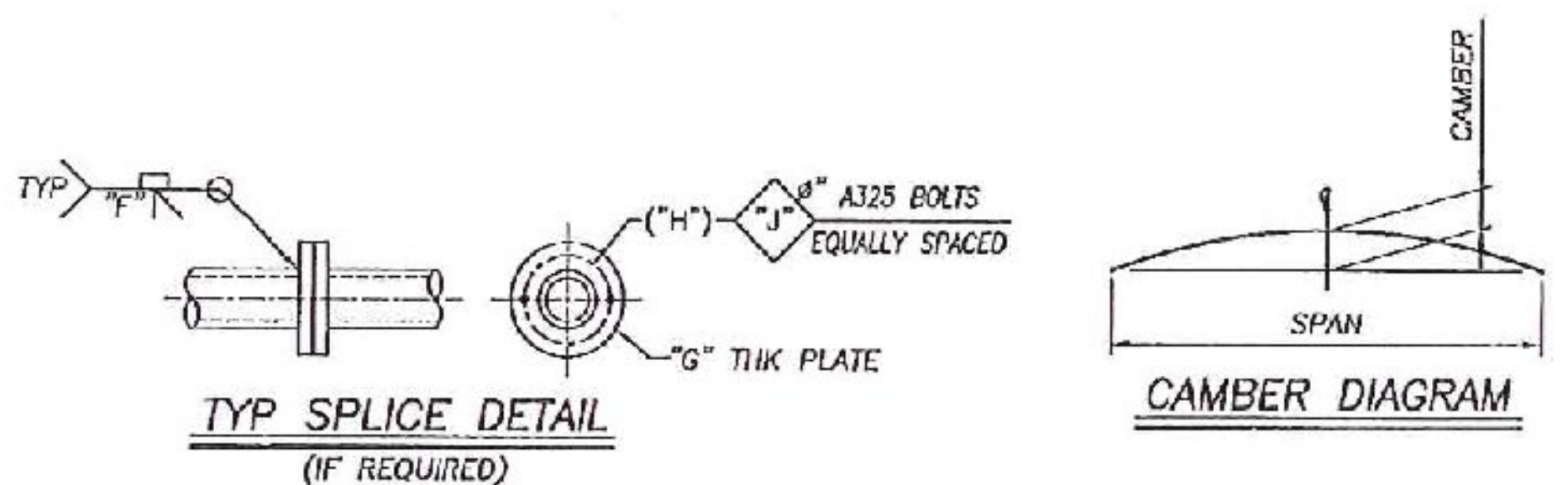


**MATERIAL SPECIFICATIONS**

- PIPE - SHALL MEET THE FOLLOWING SPECIFICATIONS WITH THE PROPERTIES (52 KSI MIN. YIELD, 60 KSI MIN. ULTIMATE TENSILE AND MIN. ELONGATION EQUAL TO 20% IN 2 IN.). API-5L-X52, API-5L-X42, API-5L-X60, ASTM A252 GR. 3, ASTM A500 GR. B/C, OR ASTM A53 GR. B (YIELD STRENGTH SHALL NOT EXCEED 82 KSI).
- PLATES - ASTM A572, GR. 50
- ANGLES - STEEL ASTM A36
- HARDWARE - PRIMARY-ASTM A325  
- SECONDARY-ASTM A307
- GALVANIZING - STRUCTURAL-ASTM A123  
- HARDWARE-ASTM A153
- PAINTING - PER WALPAR COATING SYSTEM #3 - COLOR BLACK
- ANCHOR BOLTS - STAINLESS STEEL, ASTM A276 TYPE 304 (55 KSI YIELD)  
- S.S. FLAT AND LOCK WASHERS  
- S.S. NUTS - ASHTO M 292/M 292 GR. B & ANSI B18.2.4.5M
- WELDING - AWS SPEC. D1.1 - LATEST REV.



Barre City  
STATE OF VERMONT  
BARRE, VERMONT  
NO. 64492  
STRUCTURAL  
LICENSED PROFESSIONAL ENGINEER  
VHB  
WP  
CR'D  
EA  
VTrans  
Received  
CR'D BY  
KCO  
MAY 02 2012  
APPROVED  
DATE  
5/2/12

NOTE: ALL PIPE SIZES SHOWN ARE OUTSIDE DIAMETER

STRUCTURE	STATION	SPAN	CHORD	LEFT UPRIGHT	RIGHT UPRIGHT	"A"	"B"	"C"	"D"		"E"	"F"	"G"	"H"	"J"	CAMBER	ANCHOR BOLTS				DESIGN SIGN AREA (SQ FT)	GUSSETS REQD	"X"	"L"	"M"	"N"	"P"	"R"		
									QTY	LT SIZE							EMBED	QTY	RT SIZE	EMBED										
1	137+71.4	60'-0"	12.750 x .250	12.750 x .250	12.750 x .250	21'-0 3/4"	21'-0 3/4"	3/4"	1 1/4"	1 1/4"	5/16"	CP	3/4"	12"	7/8"	3 1/16"	B	1	3'-6"	8	1	3'-6"	99.6	4	1'-2 3/4"	1'-8 3/4"	1 1/4"	6	8 3/8"	1'-3 3/4"



POST OFFICE BOX 28650  
BIRMINGHAM ALABAMA 35228  
4200 JEFFERSON AVENUE  
BIRMINGHAM ALABAMA 35221  
PHONE (205) 925-4990  
FAX (205) 925-7273

STATE: Vermont  
PROJECT: Barre City  
PROJ No: FECC F 026-1(34) C/2  
COUNTY: Washington  
ROUTE: US-302  
SUBJECT: OVERHEAD SIGN SUPPORT (MONOTUBE)  
WALPAR STD DESIGN  
FOR: F.R. Lafayette, Inc.  
DRAWN BY: JEFF DATE: 7/21/11  
CHECKED BY: RRV DATE: 8/16/11  
RELEASE FOR CONSTRUCTION:  DWG NO: C1181-D1

NO.	REVISIONS	DATE	MADE	INDEX
1	FOR APPROVAL	8/16/11	JLFF	NRW