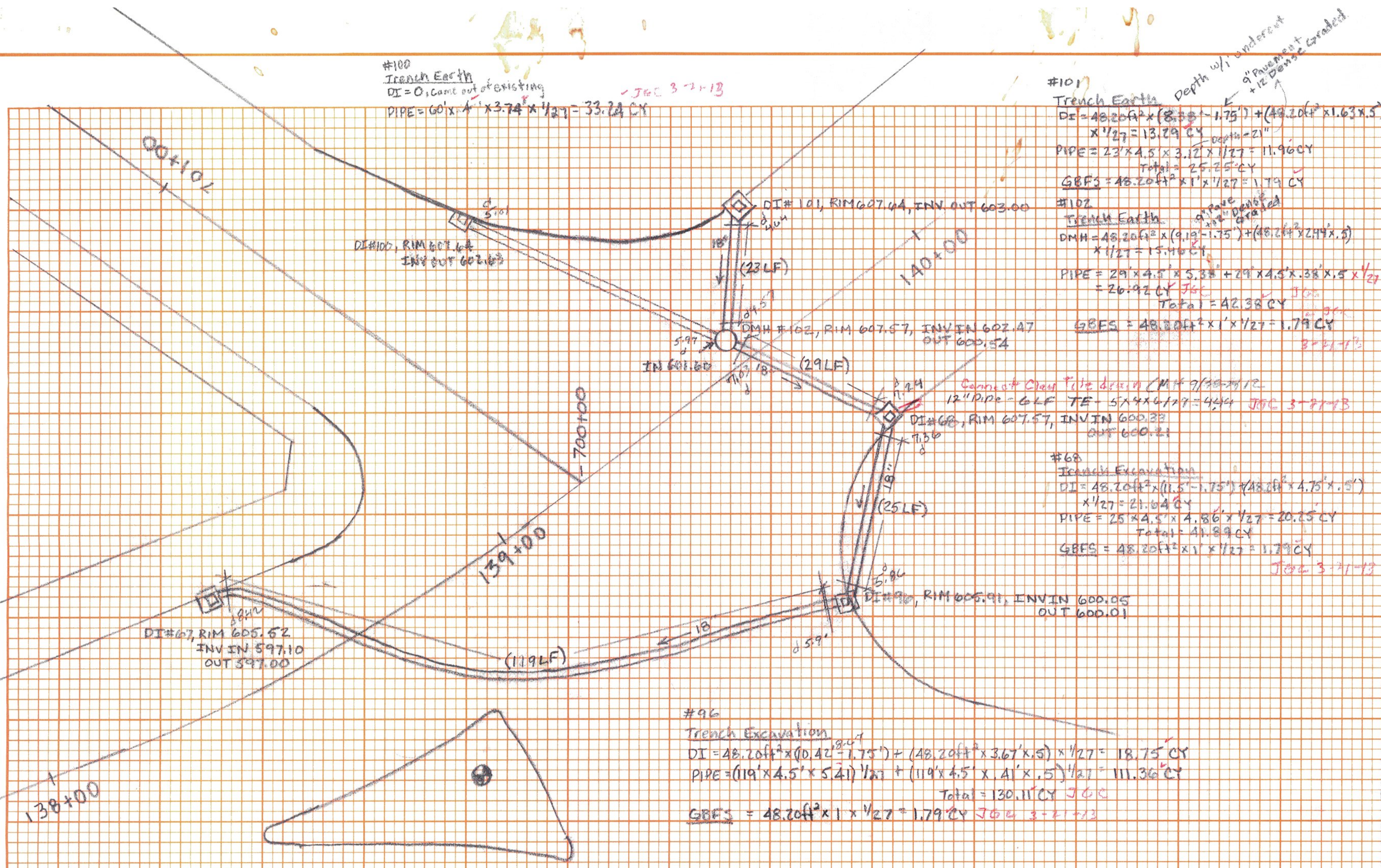


NO.	NO.
NOTE BOOK	AREAS CHECKED
SURVEY	TEMPLATE
ORIGINAL	BY
	DATE



#100
Trench Earth
DI = 0, Camt out of existing
PIPE = 60' x 4' x 3.74' x 1/27 = 33.24 CY
- JGC 3-21-13

#101
Trench Earth
DI = 48.20ft² x (8.58' - 1.75') + (48.20ft² x 1.63' x .5') x 1/27 = 13.29 CY
PIPE = 23' x 4.5' x 3.12' x 1/27 = 11.96 CY
Total = 25.25 CY
GBFS = 48.20ft² x 1' x 1/27 = 1.79 CY
Depth w/ undercut
9" Pavement + 12" Dams + Graded

#102
Trench Earth
DI = 48.20ft² x (9.19' - 1.75') + (48.20ft² x 2.44' x .5') x 1/27 = 15.46 CY
PIPE = 29' x 4.5' x 5.38' + 29' x 4.5' x 3.8' x .5' x 1/27 = 26.92 CY
Total = 42.38 CY
GBFS = 48.20ft² x 1' x 1/27 = 1.79 CY
a' Pipe
30" Diameter
Graded

Connect & Clean Pipe Section (M# 7/15-24/12)
12" Pipe - 6LF TE - 5' x 4' x 6' / 27 = 4.44
DI#68, RIM 607.57, INV IN 600.33, OUT 600.21
- JGC 3-21-13

#68
Trench Excavation
DI = 48.20ft² x (11.5' - 1.75') + (48.20ft² x 4.75' x .5') x 1/27 = 21.64 CY
PIPE = 25' x 4.5' x 4.86' x 1/27 = 20.25 CY
Total = 41.89 CY
GBFS = 48.20ft² x 1' x 1/27 = 1.79 CY
- JGC 3-21-13

#96
Trench Excavation
DI = 48.20ft² x (10.42' - 1.75') + (48.20ft² x 3.67' x .5') x 1/27 = 18.75 CY
PIPE = (119' x 4.5' x 5.41') / 27 + (119' x 4.5' x 4.1' x .5') / 27 = 111.36 CY
Total = 130.11 CY
GBFS = 48.20ft² x 1' x 1/27 = 1.79 CY
- JGC 3-21-13