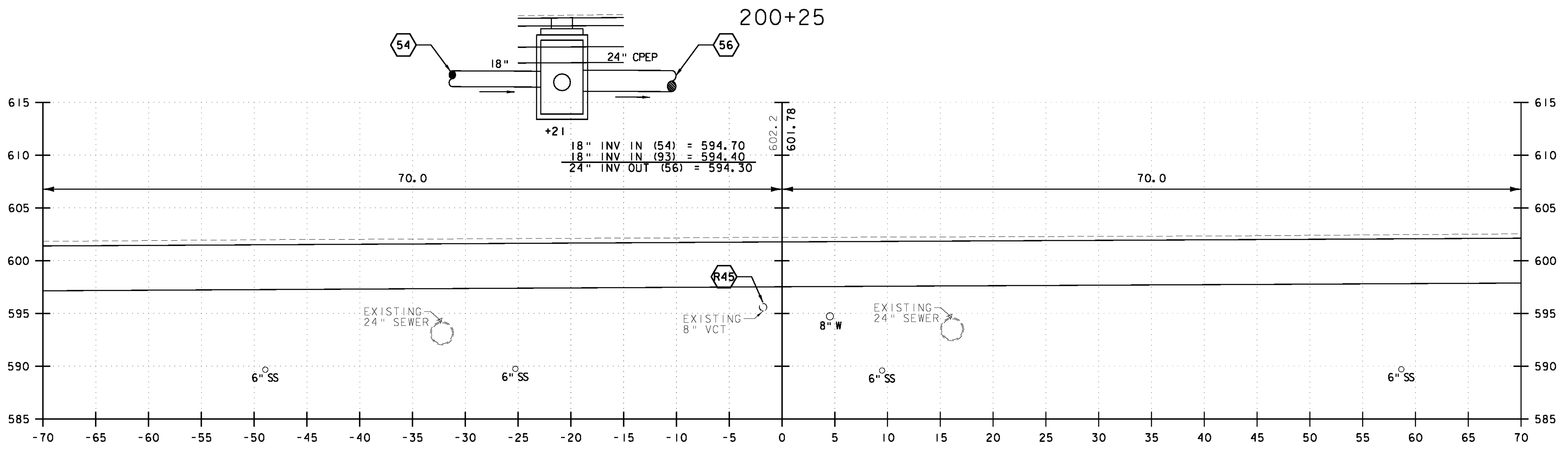
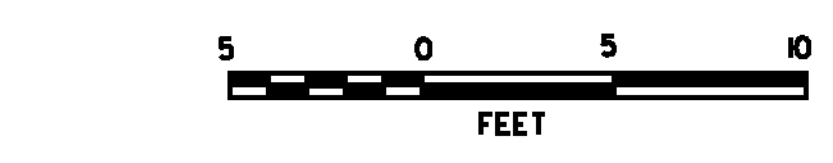


18" INV IN (94) = 594.40  
 8" INV IN = 594.7 (EXIST)  
 18" INV OUT (93) = 594.50



18" INV IN (54) = 594.70  
 18" INV IN (93) = 594.40  
 24" INV OUT (56) = 594.30



**VHB** Vanasse Hangen Brustlin, Inc.

KEITH AVENUE	
PROJECT NAME:	BARRE CITY
PROJECT NUMBER:	FEGC F 026-I(34) C/2
FILE NAME:	85b010_xs2_Cut_C2
PROJECT LEADER:	G. BAKOS
DESIGNED BY:	DMP / MDS
CROSS SECTIONS	
PLOT DATE:	3/9/2011
DRAWN BY:	DMP / JAR
CHECKED BY:	
SHEET	317 OF 339