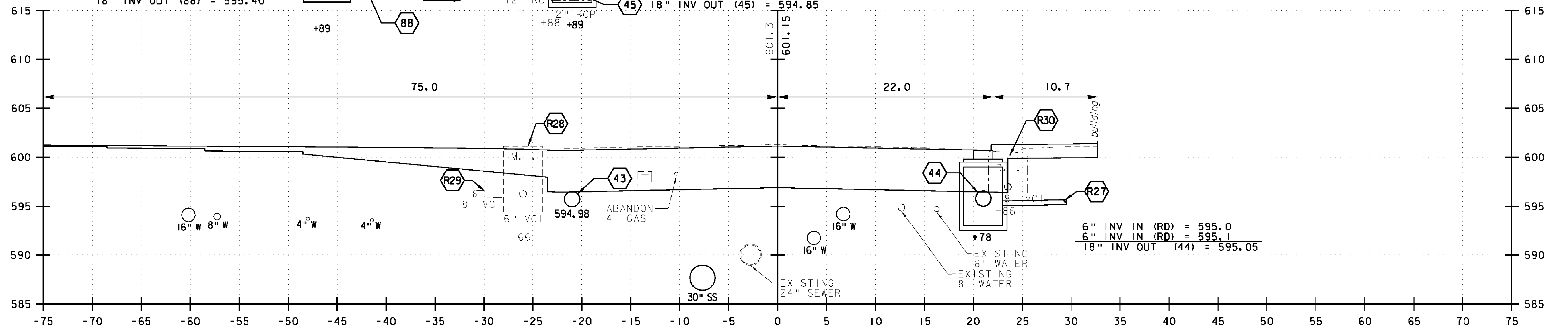


129+00 SAND BORROW ~ 1.50' X 47.0' = 70.5 SF  
 SUBBASE ~ 2.00' X 47.0' = 94.0 SF

10" INV IN = 598.6 (EXIST)  
 18" INV OUT (88) = 595.40

18" INV IN (43) = 594.95  
 18" INV IN (88) = 595.10  
 6" INV IN (RD) = 595.1  
 18" INV OUT (45) = 594.85



**VHB** Vanasse Hangen Brustlin, Inc.

NORTH MAIN STREET (US 302)	
PROJECT NAME:	BARRE CITY
PROJECT NUMBER:	FEGC F 026-(134) C/2
FILE NAME:	85b010_xsl.Cut_C2
PROJECT LEADER:	G. BAKOS
DESIGNED BY:	DMP / MDS
CROSS SECTIONS	
PLOT DATE:	3/9/2011
DRAWN BY:	DMP / JAR
CHECKED BY:	
SHEET	260 OF 339