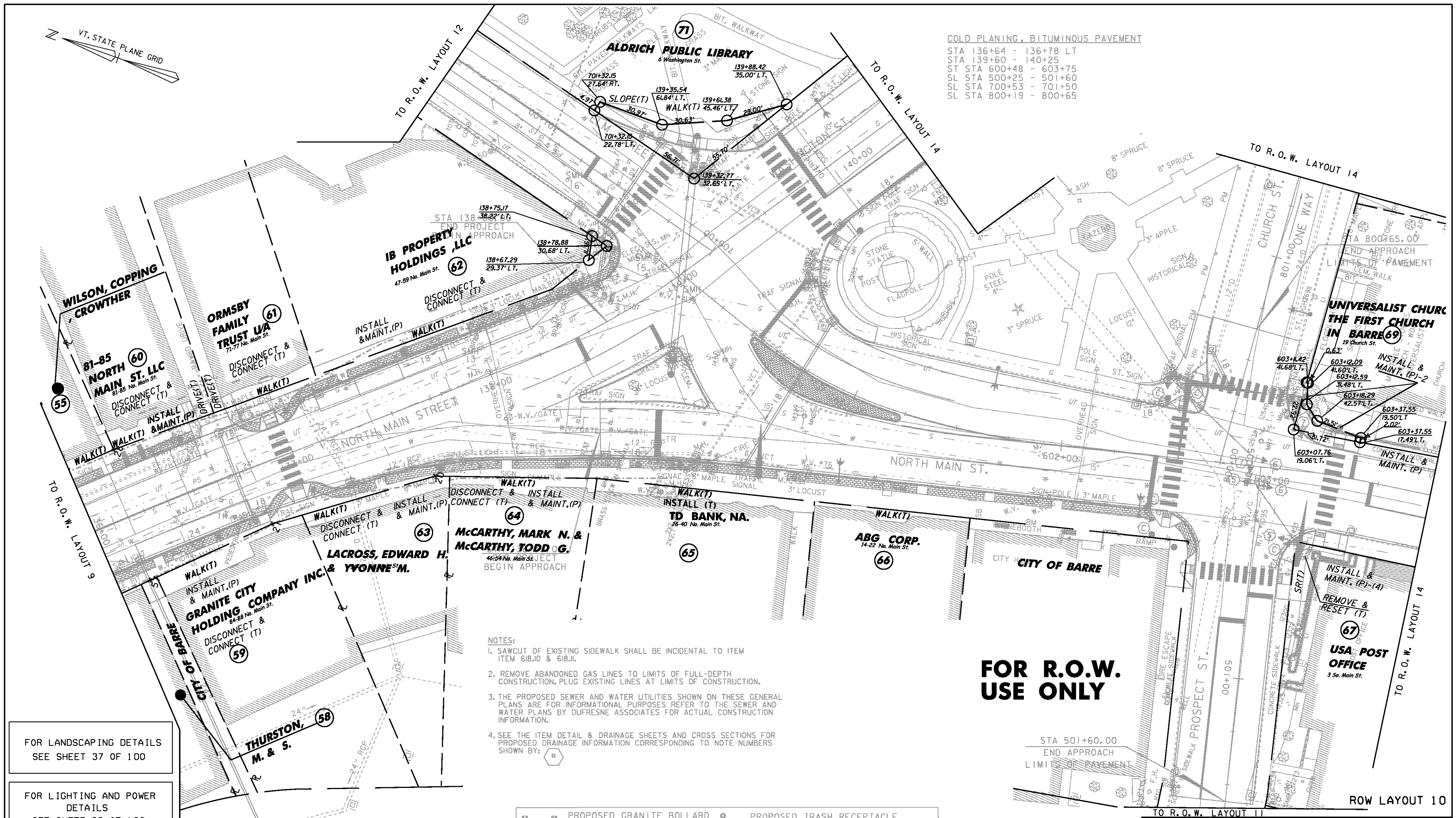


COLD PLANING, BITUMINOUS PAVEMENT
 STA 136+64 - 136+78 LT
 STA 139+60 - 140+25
 ST STA 600+48 - 603+75
 SL STA 500+25 - 501+60
 SL STA 700+53 - 701+50
 SL STA 800+19 - 800+65



FOR LANDSCAPING DETAILS
SEE SHEET 37 OF 100

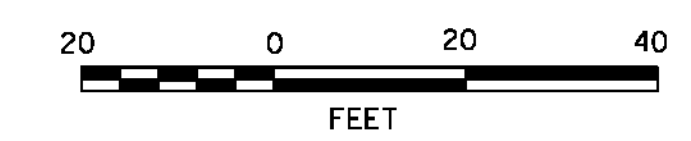
FOR LIGHTING AND POWER
DETAILS
SEE SHEET 29 OF 100

FOR WATER & SEWER DETAILS
SEE SHEET 58 OF 100

- NOTES:**
1. SAWCUT OF EXISTING SIDEWALK SHALL BE INCIDENTAL TO ITEM 618.I0 & 618.II.
 2. REMOVE ABANDONED GAS LINES TO LIMITS OF FULL-DEPTH CONSTRUCTION. PLUG EXISTING LINES AT LIMITS OF CONSTRUCTION.
 3. THE PROPOSED SEWER AND WATER UTILITIES SHOWN ON THESE GENERAL PLANS ARE FOR INFORMATIONAL PURPOSES; REFER TO THE SEWER AND WATER PLANS BY DUFRESNE ASSOCIATES FOR ACTUAL CONSTRUCTION INFORMATION.
 4. SEE THE ITEM DETAIL & DRAINAGE SHEETS AND CROSS SECTIONS FOR PROPOSED DRAINAGE INFORMATION CORRESPONDING TO NOTE NUMBERS SHOWN BY: #

—■—	PROPOSED GRANITE BOLLARD AND CHAIN FENCE	○	PROPOSED TRASH RECEPTACLE
*	PROPOSED ORNAMENTAL STREET LIGHT	⊗	PROPOSED PARKING METER
—○—	PROPOSED STREET LIGHT WITH LUMINAIRE BY GMP	⊠	PROPOSED TREE LOCATION
—●—	PROPOSED SIGNAL POLE WITH LUMINAIRE	⊞	4' x 5' PROPOSED TREE PIT
		⊕	PROPOSED FIRE HYDRANT

**FOR R.O.W.
USE ONLY**



TO R.O.W. LAYOUT 11
PROJECT NAME: BARRE CITY - NORTH MAIN ST.
PROJECT NUMBER: F EGC-F 026-I(34) - CONTRACT 2
FILE NAME: z85b010bdr cp
PROJECT LEADER: G. BAKOS
DESIGNED BY: D. PECK
ROW SHEET 96 OF 100
PLOT DATE: 04-MAR-2011
DRAWN BY: D. PECK
CHECKED BY:
SHEET 224 OF 339

VHB Vanasse Hangen Brustlin, Inc.