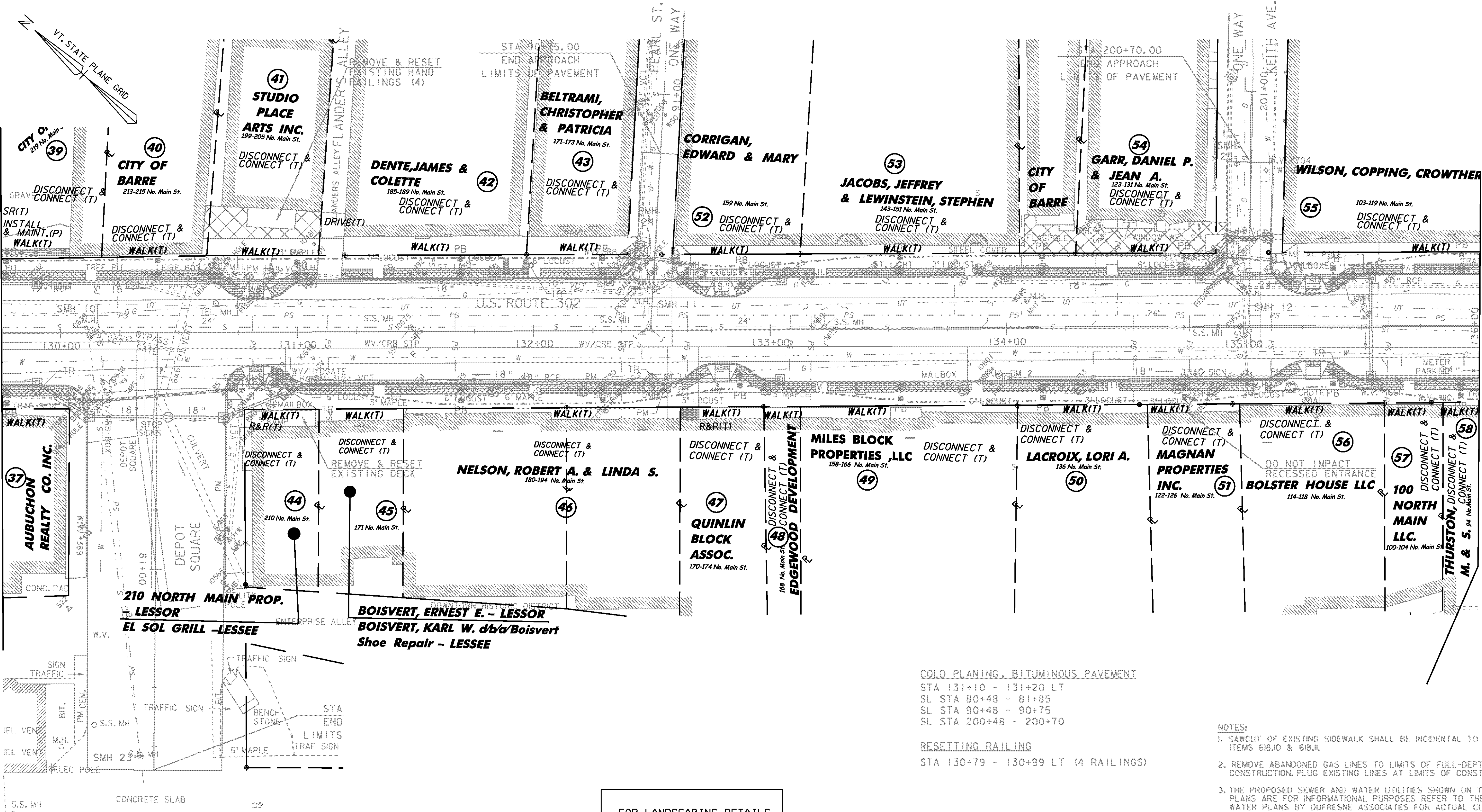


TO R.O.W. LAYOUT 8

TO R.O.W. LAYOUT 10



COLD PLANING, BITUMINOUS PAVEMENT
 STA 131+10 - 131+20 LT
 SL STA 80+48 - 81+85
 SL STA 90+48 - 90+75
 SL STA 200+48 - 200+70

RESETTING RAILING
 STA 130+79 - 130+99 LT (4 RAILINGS)

- NOTES:**
1. SAWCUT OF EXISTING SIDEWALK SHALL BE INCIDENTAL TO ITEMS 618.10 & 618.11.
 2. REMOVE ABANDONED GAS LINES TO LIMITS OF FULL-DEPTH CONSTRUCTION. PLUG EXISTING LINES AT LIMITS OF CONSTRUCTION.
 3. THE PROPOSED SEWER AND WATER UTILITIES SHOWN ON THESE GENERAL PLANS ARE FOR INFORMATIONAL PURPOSES REFER TO THE SEWER AND WATER PLANS BY DUFRESNE ASSOCIATES FOR ACTUAL CONSTRUCTION INFORMATION.
 4. SEE THE ITEM DETAIL & DRAINAGE SHEETS AND CROSS SECTIONS FOR PROPOSED DRAINAGE INFORMATION CORRESPONDING TO NOTE NUMBERS SHOWN BY:

- | | |
|---|---------------------------|
| PROPOSED GRANITE BOLLARD AND CHAIN FENCE | PROPOSED TRASH RECEPTACLE |
| PROPOSED ORNAMENTAL STREET LIGHT | PROPOSED PARKING METER |
| PROPOSED STREET LIGHT WITH LUMINAIRE BY GMP | PROPOSED TREE LOCATION |
| PROPOSED SIGNAL POLE WITH LUMINAIRE | 4' x 5' PROPOSED TREE PIT |
| | PROPOSED FIRE HYDRANT |

FOR LANDSCAPING DETAILS
SEE SHEET 36 OF 100

FOR LIGHTING AND POWER DETAILS
SEE SHEET 28 OF 100

FOR WATER & SEWER DETAILS
SEE SHEET 57 OF 100

FOR R.O.W. USE ONLY



VHB Vanasse Hangen Brustlin, Inc.

ROW LAYOUT 9

PROJECT NAME: BARRE CITY - NORTH MAIN ST.
 PROJECT NUMBER: F EGC-F 026-I(34) - CONTRACT 2

FILE NAME: z85b010bdr cp
 PROJECT LEADER: G. BAKOS
 DESIGNED BY: D. PECK
 ROW SHEET 95 OF 100

PLOT DATE: 04-MAR-2011
 DRAWN BY: D. PECK
 CHECKED BY:
 SHEET 223 OF 339