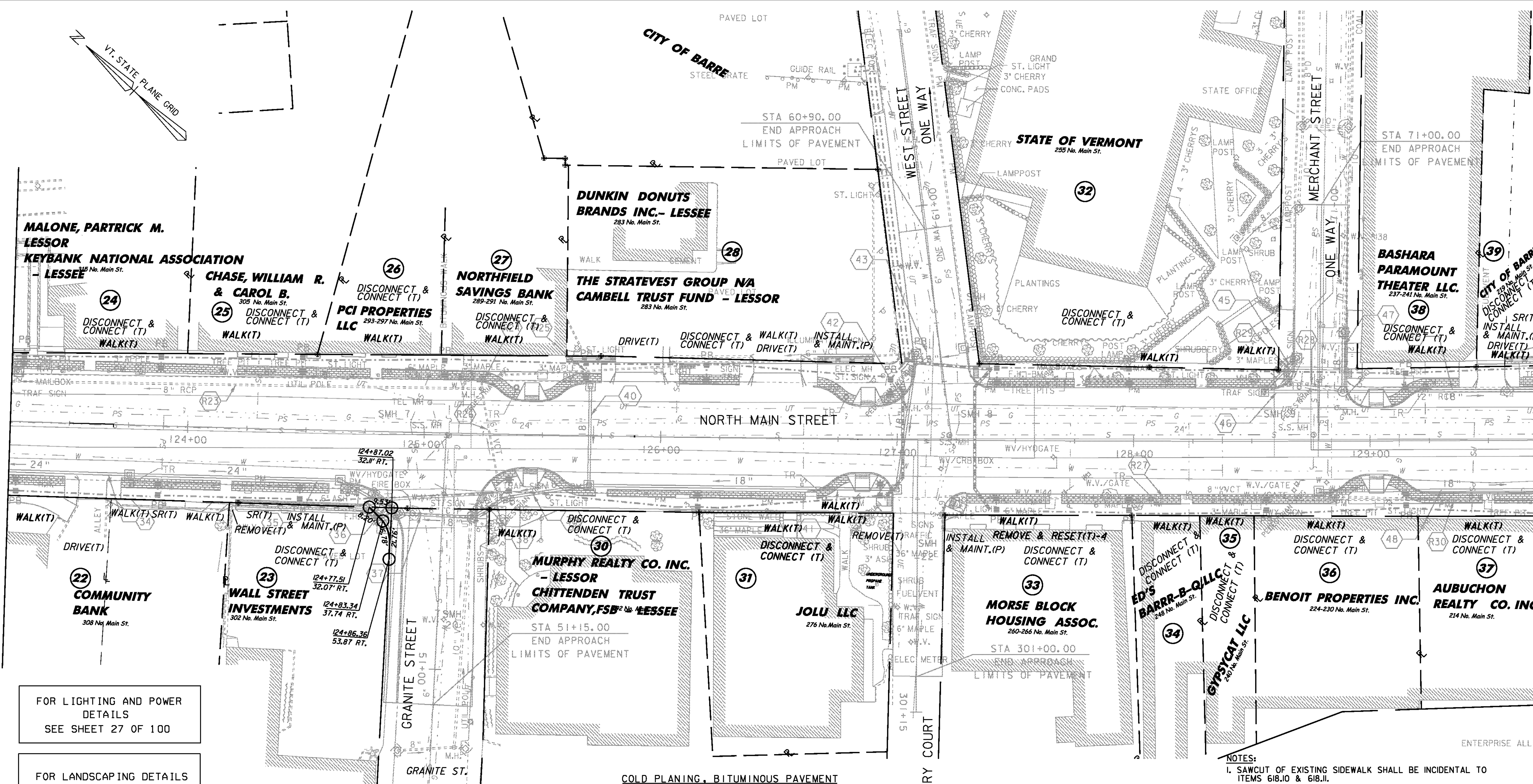


TO R.O.W. LAYOUT 7

TO R.O.W. LAYOUT 9



FOR LIGHTING AND POWER DETAILS
SEE SHEET 27 OF 100

FOR LANDSCAPING DETAILS
SEE SHEET 35 OF 100

FOR WATER & SEWER DETAILS
SEE SHEET 56 OF 100

- | | |
|--|---|
| <ul style="list-style-type: none"> ☒ PROPOSED GRANITE BOLLARD AND CHAIN FENCE * PROPOSED ORNAMENTAL STREET LIGHT ⬇ PROPOSED STREET LIGHT WITH LUMINAIRE BY GMP ⬇ PROPOSED SIGNAL POLE WITH LUMINAIRE | <ul style="list-style-type: none"> ○ PROPOSED TRASH RECEPTACLE ○ PROPOSED PARKING METER ⊠ PROPOSED TREE LOCATION ⊠ 4' x 5' PROPOSED TREE PIT ○ PROPOSED FIRE HYDRANT |
|--|---|

COLD PLANING, BITUMINOUS PAVEMENT

- STA 125+60 - 126+03 LT
- STA 126+37 - 126+66 LT
- STA 129+45 - 129+57 LT
- SL STA 50+48 - 51+15
- SL STA 60+48 - 60+90
- SL STA 70+48 - 71+00
- SL STA 300+48 - 301+00

RESETTING RAILING

- STA 123+41 LT (1 RAILING)
- STA 127+30 - 127+87 RT (8 RAILINGS)

FOR R.O.W. USE ONLY



VHB Vanasse Hangen Brustlin, Inc.

NOTES:

1. SAWCUT OF EXISTING SIDEWALK SHALL BE INCIDENTAL TO ITEMS 618.I & 618.II.
2. REMOVE ABANDONED GAS LINES TO LIMITS OF FULL-DEPTH CONSTRUCTION. PLUG EXISTING LINES AT LIMITS OF CONSTRUCTION.
3. THE PROPOSED SEWER AND WATER UTILITIES SHOWN ON THESE GENERAL PLANS ARE FOR INFORMATIONAL PURPOSES REFER TO THE SEWER AND WATER PLANS BY DUFRESNE ASSOCIATES FOR ACTUAL CONSTRUCTION INFORMATION.
4. SEE THE ITEM DETAIL & DRAINAGE SHEETS AND CROSS SECTIONS FOR PROPOSED DRAINAGE INFORMATION CORRESPONDING TO NOTE NUMBERS SHOWN BY: #

ROW LAYOUT 8

PROJECT NAME:	BARRE CITY - NORTH MAIN ST.
PROJECT NUMBER:	F EGC-F 026-I(34) - CONTRACT 2
FILE NAME:	z85b010bdr cp
PROJECT LEADER:	G. BAKOS
DESIGNED BY:	D. PECK
ROW SHEET 94 OF 100	
PLOT DATE:	04-MAR-2011
DRAWN BY:	D. PECK
CHECKED BY:	
SHEET 222 OF 339	