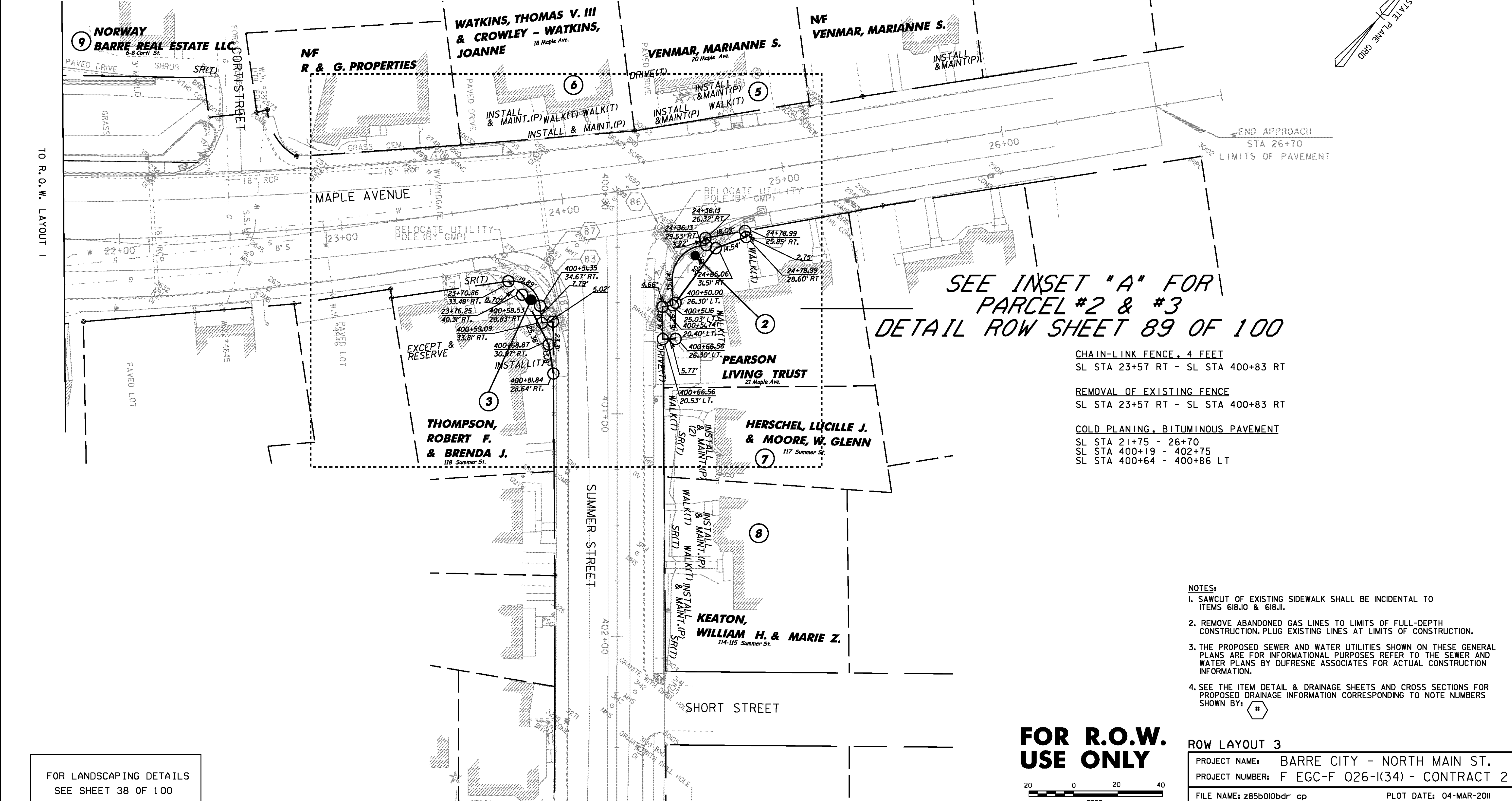
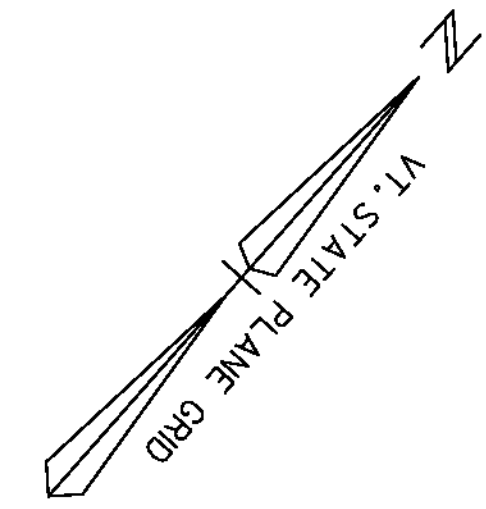


- PROPOSED GRANITE BOLLARD AND CHAIN FENCE
- PROPOSED ORNAMENTAL STREET LIGHT
- PROPOSED STREET LIGHT WITH LUMINAIRE BY GMP
- PROPOSED SIGNAL POLE WITH LUMINAIRE
- PROPOSED TRASH RECEPTACLE
- PROPOSED PARKING METER
- PROPOSED TREE LOCATION
- 4' x 5' PROPOSED TREE PIT
- PROPOSED FIRE HYDRANT



SEE INSET "A" FOR
PARCEL #2 & #3
DETAIL ROW SHEET 89 OF 100

- CHAIN-LINK FENCE, 4 FEET
SL STA 23+57 RT - SL STA 400+83 RT
- REMOVAL OF EXISTING FENCE
SL STA 23+57 RT - SL STA 400+83 RT
- COLD PLANING, BITUMINOUS PAVEMENT
SL STA 21+75 - 26+70
SL STA 400+19 - 402+75
SL STA 400+64 - 400+86 LT

- NOTES:
1. SAWCUT OF EXISTING SIDEWALK SHALL BE INCIDENTAL TO ITEMS 618.I0 & 618.I1.
 2. REMOVE ABANDONED GAS LINES TO LIMITS OF FULL-DEPTH CONSTRUCTION. PLUG EXISTING LINES AT LIMITS OF CONSTRUCTION.
 3. THE PROPOSED SEWER AND WATER UTILITIES SHOWN ON THESE GENERAL PLANS ARE FOR INFORMATIONAL PURPOSES REFER TO THE SEWER AND WATER PLANS BY DUFRESNE ASSOCIATES FOR ACTUAL CONSTRUCTION INFORMATION.
 4. SEE THE ITEM DETAIL & DRAINAGE SHEETS AND CROSS SECTIONS FOR PROPOSED DRAINAGE INFORMATION CORRESPONDING TO NOTE NUMBERS SHOWN BY: #

FOR LANDSCAPING DETAILS
SEE SHEET 38 OF 100

**FOR R.O.W.
USE ONLY**



ROW LAYOUT 3	
PROJECT NAME:	BARRE CITY - NORTH MAIN ST.
PROJECT NUMBER:	F EGC-F 026-I(34) - CONTRACT 2
FILE NAME:	z85b010bdr cp
PROJECT LEADER:	G. BAKOS
DESIGNED BY:	D. PECK
ROW SHEET 88 OF 100	
PLOT DATE:	04-MAR-2011
DRAWN BY:	D. PECK
CHECKED BY:	
SHEET 216 OF 339	