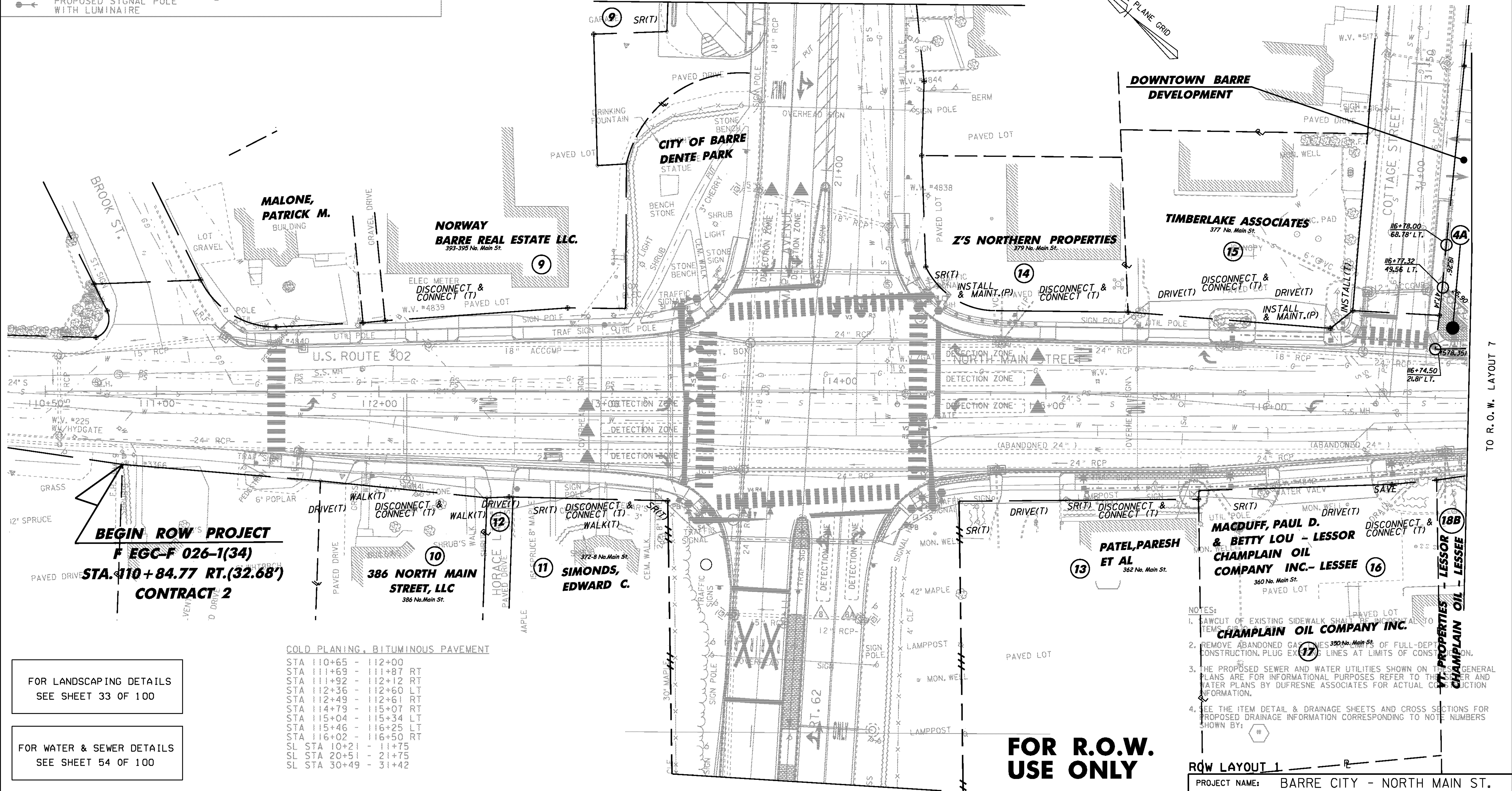


- PROPOSED GRANITE BOLLARD AND CHAIN FENCE
- PROPOSED ORNAMENTAL STREET LIGHT
- PROPOSED STREET LIGHT WITH LUMINAIRE BY GMP
- PROPOSED SIGNAL POLE WITH LUMINAIRE
- PROPOSED TRASH RECEPTACLE
- PROPOSED PARKING METER
- PROPOSED TREE LOCATION
- 4' x 5' PROPOSED TREE PIT
- PROPOSED FIRE HYDRANT



FOR LANDSCAPING DETAILS
SEE SHEET 33 OF 100

FOR WATER & SEWER DETAILS
SEE SHEET 54 OF 100

FOR LIGHTING AND POWER
DETAILS
SEE SHEET 25 OF 100

COLD PLANING, BITUMINOUS PAVEMENT

STA 110+65	-	112+00
STA 111+69	-	111+87 RT
STA 111+92	-	112+12 RT
STA 112+36	-	112+60 LT
STA 112+49	-	112+61 RT
STA 114+79	-	115+07 RT
STA 115+04	-	115+34 LT
STA 115+46	-	116+25 LT
STA 116+02	-	116+50 RT
SL STA 10+21	-	11+75
SL STA 20+51	-	21+75
SL STA 30+49	-	31+42

**FOR R.O.W.
USE ONLY**



- NOTES:
- SAWCUT OF EXISTING SIDEWALK SHALL BE INCIDENTAL TO ITEMS 2 AND 3.
 - REMOVE ABANDONED GAS LINES OF FULL-DEPTH CONSTRUCTION. PLUG EXISTING LINES AT LIMITS OF CONSTRUCTION.
 - THE PROPOSED SEWER AND WATER UTILITIES SHOWN ON THESE GENERAL PLANS ARE FOR INFORMATIONAL PURPOSES REFER TO THE SEWER AND WATER PLANS BY DUFRESNE ASSOCIATES FOR ACTUAL CONSTRUCTION INFORMATION.
 - SEE THE ITEM DETAIL & DRAINAGE SHEETS AND CROSS SECTIONS FOR PROPOSED DRAINAGE INFORMATION CORRESPONDING TO NOTE NUMBERS SHOWN BY:

R.O.W. LAYOUT 1

PROJECT NAME: BARRE CITY - NORTH MAIN ST.
PROJECT NUMBER: F EGC-F 026-I(34) - CONTRACT 2

FILE NAME: z85b010bdr cp
PROJECT LEADER: G. BAKOS
DESIGNED BY: D. PECK
ROW SHEET 86 OF 100

PLOT DATE: 04-MAR-2011
DRAWN BY: D. PECK
CHECKED BY:
SHEET 214 OF 339

TO R.O.W. LAYOUT 7