

DETAIL B

SEE DETAIL B FOR PHASES 2-5

VT 14 TO EAST MONTPELIER

LAUREL ST.
GUNNERS CREEK

SEMINARY STREET

SUMMER STREET

TREMONT STREET

WELLINGTON ST.

JEFFERSON ST.

AVERRILL ST.

AGRICULTURE ST.

CHURCH ST.

WASHINGTON ST. (US RT 302)

CHURCH ST.

SOUTH MAIN ST. (RT 14)

SEE DETAIL A FOR PHASES 2-6

TO ORANGE

SEE DETAIL A FOR PHASES 2-6

NORTH MAIN ST (US RT 302 / RT 14)

GRANITE STREET

CREAMERY COURT

ENTERPRISE ALLEY

DEPOT SQUARE

WEST STREET

FLANDERS ALLEY

PEARL ST.

KELTH AVE.

ELM STREET

MERCHANTS ROW

PROSPECT ST.

RAILROAD TRACKS

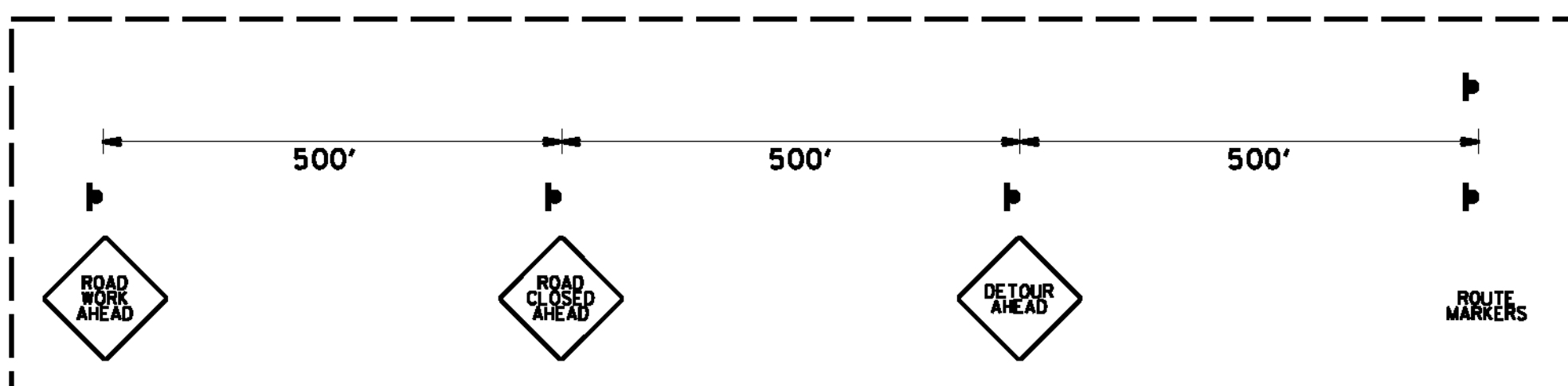
RAILROAD CROSSING

TO MONTPELIER

SEE DETAIL A FOR PHASES 2-5
PHASE 6 ALLOWS EASTBOUND THROUGH MOVEMENT WITHOUT DETOUR

VT 62 TO I-89

SEE DETAIL B FOR PHASES 2-5



DETAIL A



VHB Vanasse Hangen Brustlin, Inc.

DETOUR ADVANCED SIGNING PLAN

PROJECT NAME: BARRE CITY
PROJECT NUMBER: FECC F 026-1(34) C/2

FILE NAME: 85b010_DTR6_C2
PROJECT LEADER: G. BAKOS
DESIGNED BY: DMP / MDS
CONST. & DETOUR SIGNING PLAN PHASES 2-6 SHEET 182 OF 339

PLOT DATE: 3/9/2011
DRAWN BY: DMP / JAR
CHECKED BY: