

SPECIAL PROVISION (ORNAMENTAL STREET LIGHT)

STA 115+17 RT
 STA 115+83 RT
 STA 115+83 LT
 STA 116+30 LT
 STA 116+56 RT
 STA 116+83 LT (NO HOUSE SIDE SHIELD)

ELECTRICAL CONDUIT (2") (PVC) - LIGHTING CIRCUIT

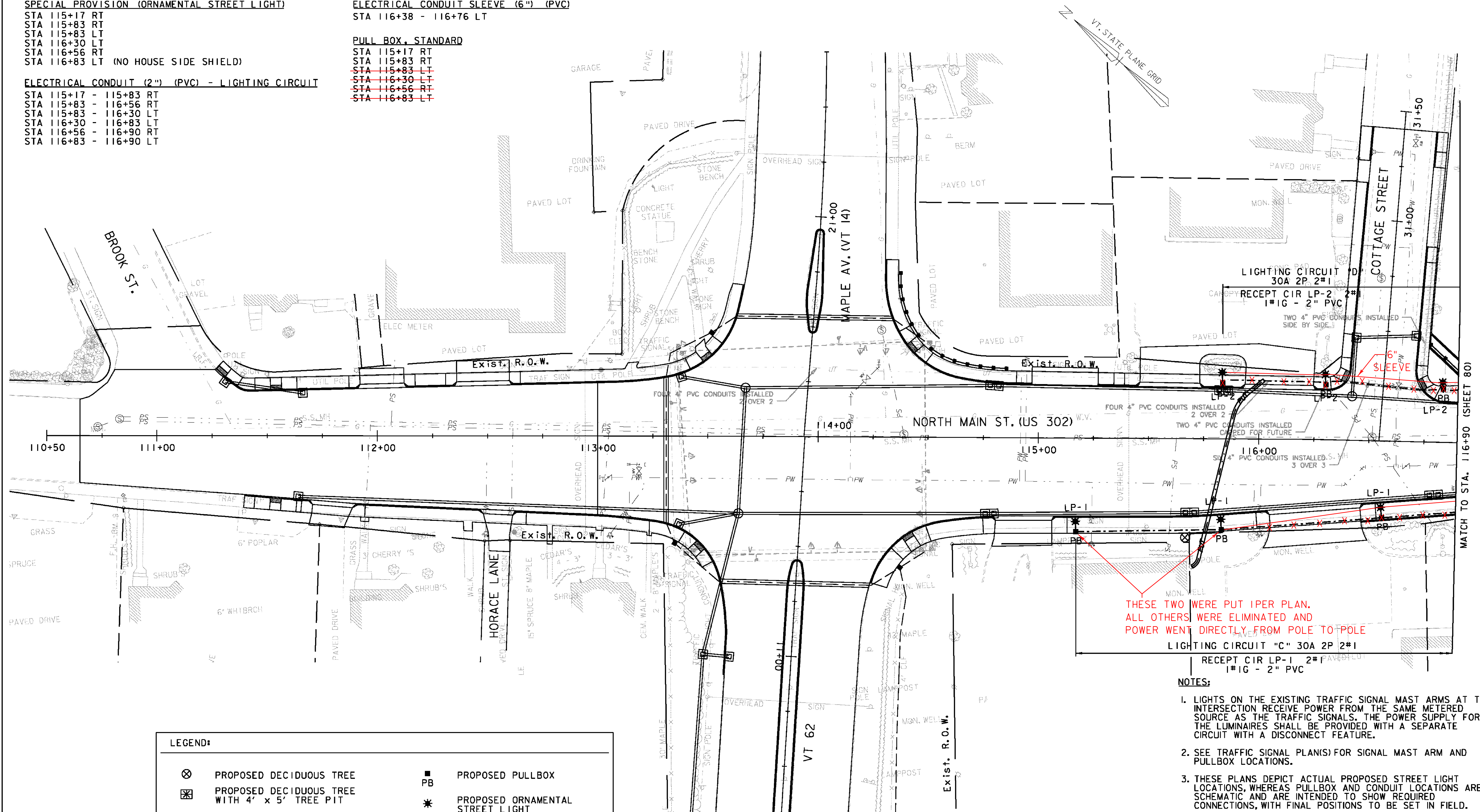
STA 115+17 - 115+83 RT
 STA 115+83 - 116+56 RT
 STA 115+83 - 116+30 LT
 STA 116+30 - 116+83 LT
 STA 116+56 - 116+90 RT
 STA 116+83 - 116+90 LT

ELECTRICAL CONDUIT SLEEVE (6") (PVC)

STA 116+38 - 116+76 LT

PULL BOX, STANDARD

STA 115+17 RT
 STA 115+83 RT
~~STA 115+83 LT~~
~~STA 116+30 LT~~
~~STA 116+56 RT~~
~~STA 116+83 LT~~



THESE TWO WERE PUT I PER PLAN.
 ALL OTHERS WERE ELIMINATED AND
 POWER WENT DIRECTLY FROM POLE TO POLE
 LIGHTING CIRCUIT "C" 30A 2P 2#1
 RECEPT CIR LP-1 2#1
 1#1G - 2" PVC

LEGEND:			
	PROPOSED DECIDUOUS TREE		PROPOSED PULLBOX
	PROPOSED DECIDUOUS TREE WITH 4' x 5' TREE PIT		PROPOSED ORNAMENTAL STREET LIGHT
	PROPOSED SMALL DECIDUOUS SHADE TREE		PROPOSED SIGNAL POLE WITH LUMINAIRE
	PROPOSED LIGHTING CONDUIT		PROPOSED FAIRPOINT DUCT BANK CONDUIT
	PROPOSED LIGHTING CONDUIT & SLEEVE		

- NOTES:**
- LIGHTS ON THE EXISTING TRAFFIC SIGNAL MAST ARMS AT THE INTERSECTION RECEIVE POWER FROM THE SAME METERED SOURCE AS THE TRAFFIC SIGNALS. THE POWER SUPPLY FOR THE LUMINAIRES SHALL BE PROVIDED WITH A SEPARATE CIRCUIT WITH A DISCONNECT FEATURE.
 - SEE TRAFFIC SIGNAL PLAN(S) FOR SIGNAL MAST ARM AND PULLBOX LOCATIONS.
 - THESE PLANS DEPICT ACTUAL PROPOSED STREET LIGHT LOCATIONS, WHEREAS PULLBOX AND CONDUIT LOCATIONS ARE SCHEMATIC AND ARE INTENDED TO SHOW REQUIRED CONNECTIONS, WITH FINAL POSITIONS TO BE SET IN FIELD.

PROJECT NAME: BARRE CITY
 PROJECT NUMBER: FECC F 026-(K34) C/2
 FILE NAME: z85b010bdr_if_C2
 PROJECT LEADER: G. BAKOS
 DESIGNED BY: D. PECK
 STREET LIGHTING PLAN #1
 PLOT DATE: 3/23/2011
 DRAWN BY: D. PECK
 CHECKED BY:
 SHEET 79 OF 339



MATCH TO STA. 116+90 (SHEET 80)