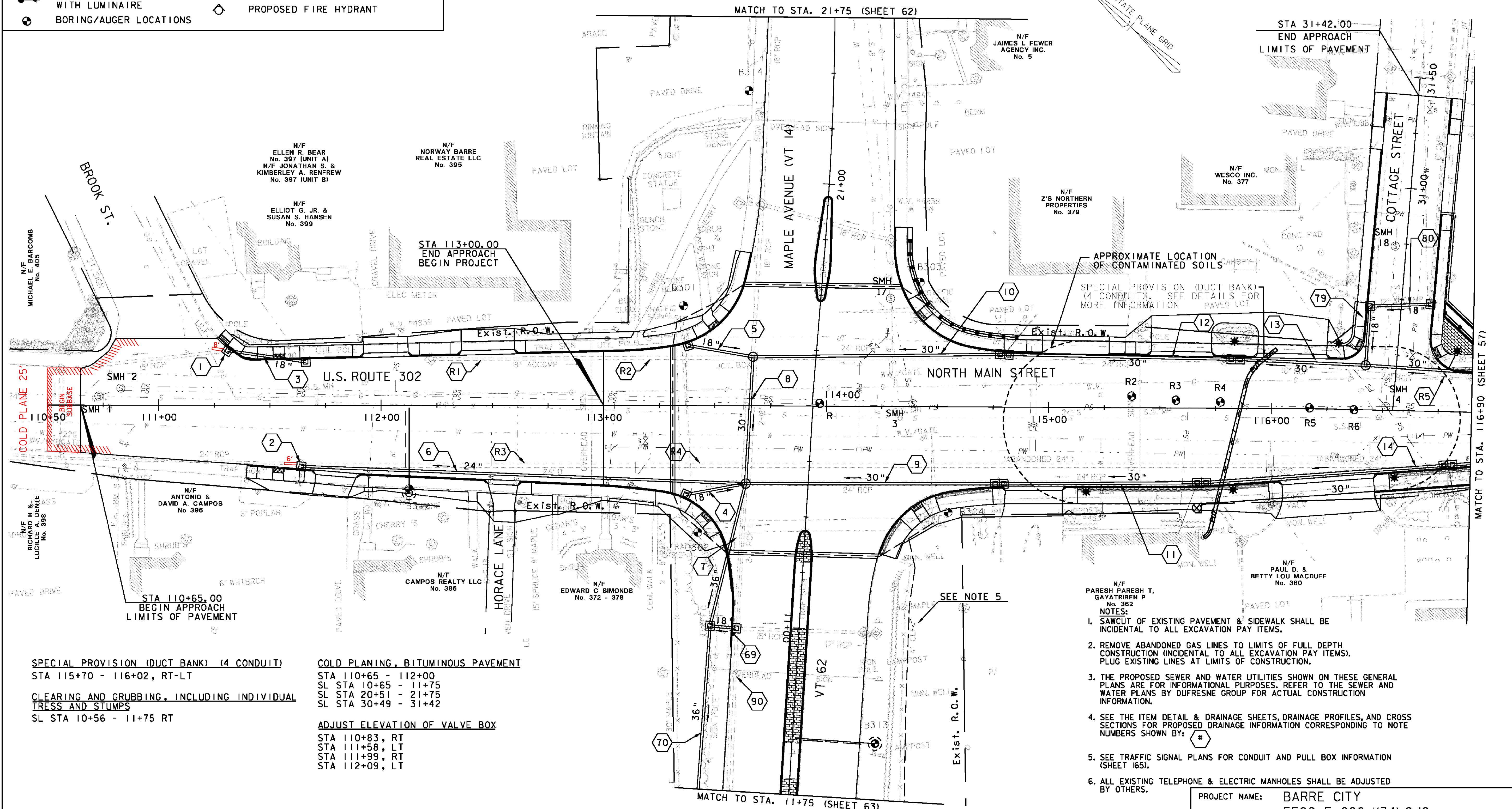


- PROPOSED GRANITE POST AND CHAIN FENCE
- * PROPOSED ORNAMENTAL STREET LIGHT
- ⦿ PROPOSED SIGNAL POLE WITH LUMINAIRE
- ⊙ BORING/AUGER LOCATIONS
- PROPOSED TRASH RECEPTACLE
- PROPOSED PARKING METER POST
- ⊗ PROPOSED TREE LOCATION
- ⊠ 4' x 5' PROPOSED TREE PIT
- ⊕ PROPOSED FIRE HYDRANT



SPECIAL PROVISION (DUCT BANK) (4 CONDUIT)
 STA 115+70 - 116+02, RT-LT

CLEARING AND GRUBBING, INCLUDING INDIVIDUAL TREES AND STUMPS
 SL STA 10+56 - 11+75 RT

COLD PLANING, BITUMINOUS PAVEMENT
 STA 110+65 - 112+00
 SL STA 10+65 - 11+75
 SL STA 20+51 - 21+75
 SL STA 30+49 - 31+42

ADJUST ELEVATION OF VALVE BOX
 STA 110+83, RT
 STA 111+58, LT
 STA 111+99, RT
 STA 112+09, LT

- N/F PARESH PARESH T. GAYATRIEN P. No. 362
- NOTES:
1. SAWCUT OF EXISTING PAVEMENT & SIDEWALK SHALL BE INCIDENTAL TO ALL EXCAVATION PAY ITEMS.
 2. REMOVE ABANDONED GAS LINES TO LIMITS OF FULL DEPTH CONSTRUCTION (INCIDENTAL TO ALL EXCAVATION PAY ITEMS). PLUG EXISTING LINES AT LIMITS OF CONSTRUCTION.
 3. THE PROPOSED SEWER AND WATER UTILITIES SHOWN ON THESE GENERAL PLANS ARE FOR INFORMATIONAL PURPOSES. REFER TO THE SEWER AND WATER PLANS BY DUFRESNE GROUP FOR ACTUAL CONSTRUCTION INFORMATION.
 4. SEE THE ITEM DETAIL & DRAINAGE SHEETS, DRAINAGE PROFILES, AND CROSS SECTIONS FOR PROPOSED DRAINAGE INFORMATION CORRESPONDING TO NOTE NUMBERS SHOWN BY: #
 5. SEE TRAFFIC SIGNAL PLANS FOR CONDUIT AND PULL BOX INFORMATION (SHEET 165).
 6. ALL EXISTING TELEPHONE & ELECTRIC MANHOLES SHALL BE ADJUSTED BY OTHERS.



VHB Vanasse Hangen Brustlin, Inc.

PROJECT NAME: BARRE CITY	PLOT DATE: 3/9/2011
PROJECT NUMBER: FECC F 026-(K34) C/2	DRAWN BY: D. PECK
FILE NAME: z85b010bdr_cp_C2	CHECKED BY:
PROJECT LEADER: G. BAKOS	SHEET 56 OF 399
DESIGNED BY: D. PECK	
GENERAL PLAN #1	