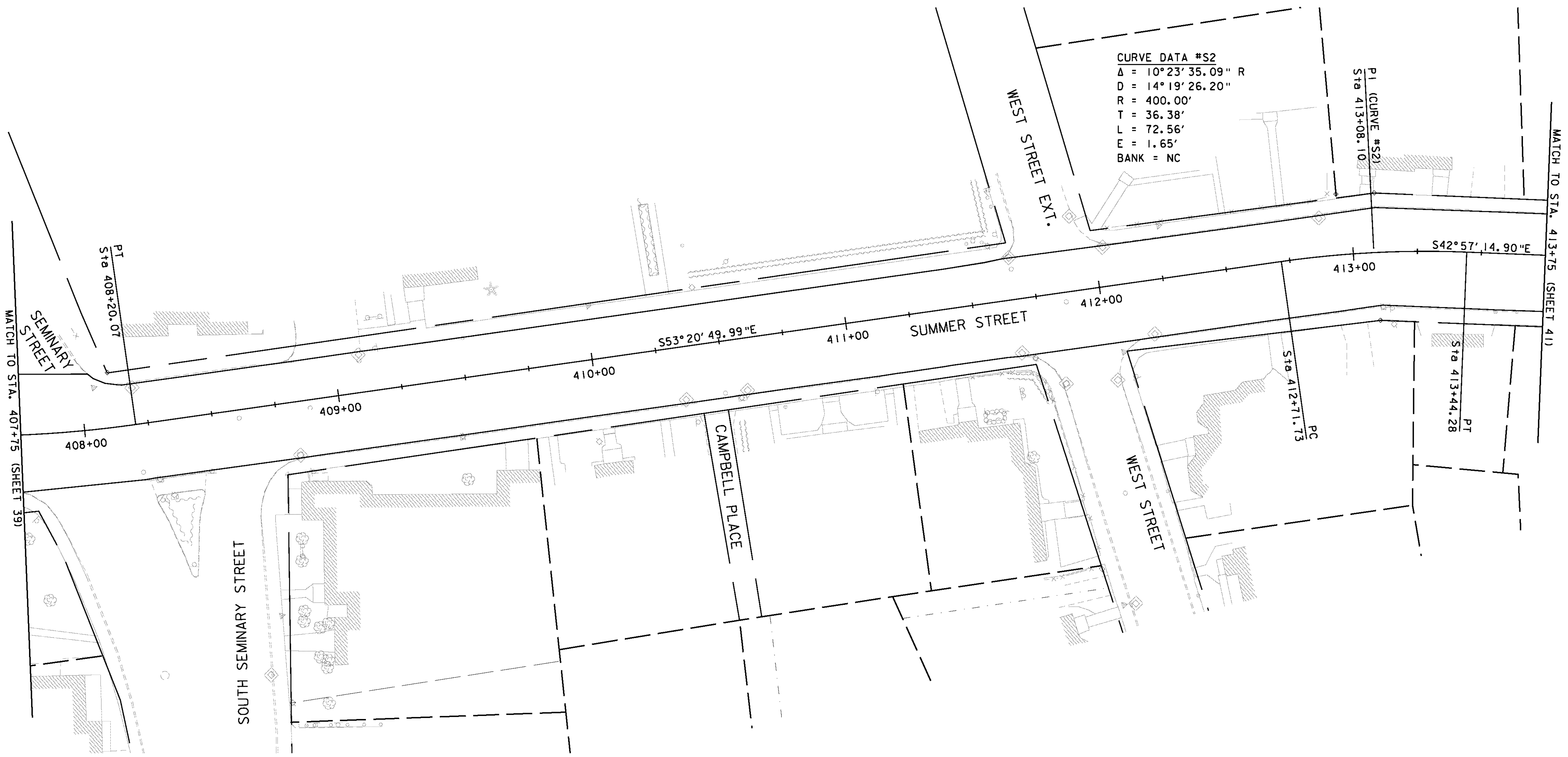
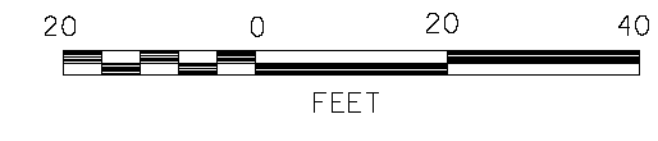


CURVE DATA #S2
Δ = 10°23'35.09" R
D = 14°19'26.20"
R = 400.00'
T = 36.38'
L = 72.56'
E = 1.65'
BANK = NC



MATCH TO STA. 407+75 (SHEET 39)

MATCH TO STA. 413+75 (SHEET 41)



VHB Vanasse Hangen Brustlin, Inc.

PROJECT NAME: BARRE CITY	PLOT DATE: 3/9/2011
PROJECT NUMBER: FECC F 026-1(34) C/2	DRAWN BY: D. PECK
FILE NAME: z85b010bdr_nu_C2	CHECKED BY:
PROJECT LEADER: G. BAKOS	SHEET 40 OF 339
DESIGNED BY: D. PECK	
ALIGNMENT AND CURB LAYOUT PLAN #11	