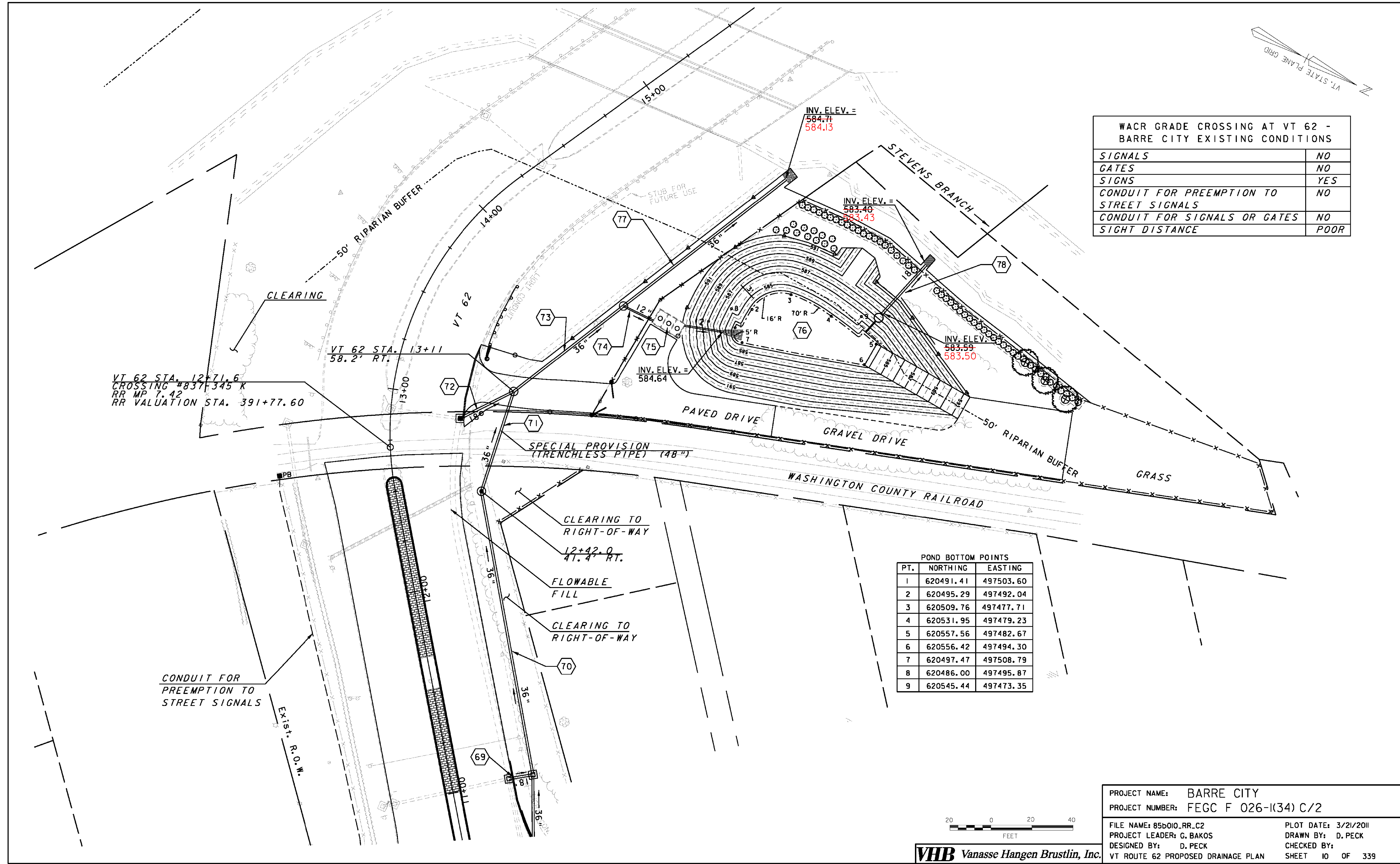


| WACR GRADE CROSSING AT VT 62 - BARRE CITY EXISTING CONDITIONS | |
|---|------|
| SIGNALS | NO |
| GATES | NO |
| SIGNS | YES |
| CONDUIT FOR PREEMPTION TO STREET SIGNALS | NO |
| CONDUIT FOR SIGNALS OR GATES | NO |
| SIGHT DISTANCE | POOR |



POND BOTTOM POINTS

| PT. | NORTHING | EASTING |
|-----|-----------|-----------|
| 1 | 620491.41 | 497503.60 |
| 2 | 620495.29 | 497492.04 |
| 3 | 620509.76 | 497477.71 |
| 4 | 620531.95 | 497479.23 |
| 5 | 620557.56 | 497482.67 |
| 6 | 620556.42 | 497494.30 |
| 7 | 620497.47 | 497508.79 |
| 8 | 620486.00 | 497495.87 |
| 9 | 620545.44 | 497473.35 |



VHB Vanasse Hangen Brustlin, Inc.

| | |
|--------------------------------------|----------------------|
| PROJECT NAME: BARRE CITY | PLOT DATE: 3/21/2011 |
| PROJECT NUMBER: FEGC F 026-1(34) C/2 | DRAWN BY: D. PECK |
| FILE NAME: 85b010.RR.C2 | CHECKED BY: |
| PROJECT LEADER: G. BAKOS | SHEET 10 OF 339 |
| DESIGNED BY: D. PECK | |
| VT ROUTE 62 PROPOSED DRAINAGE PLAN | |