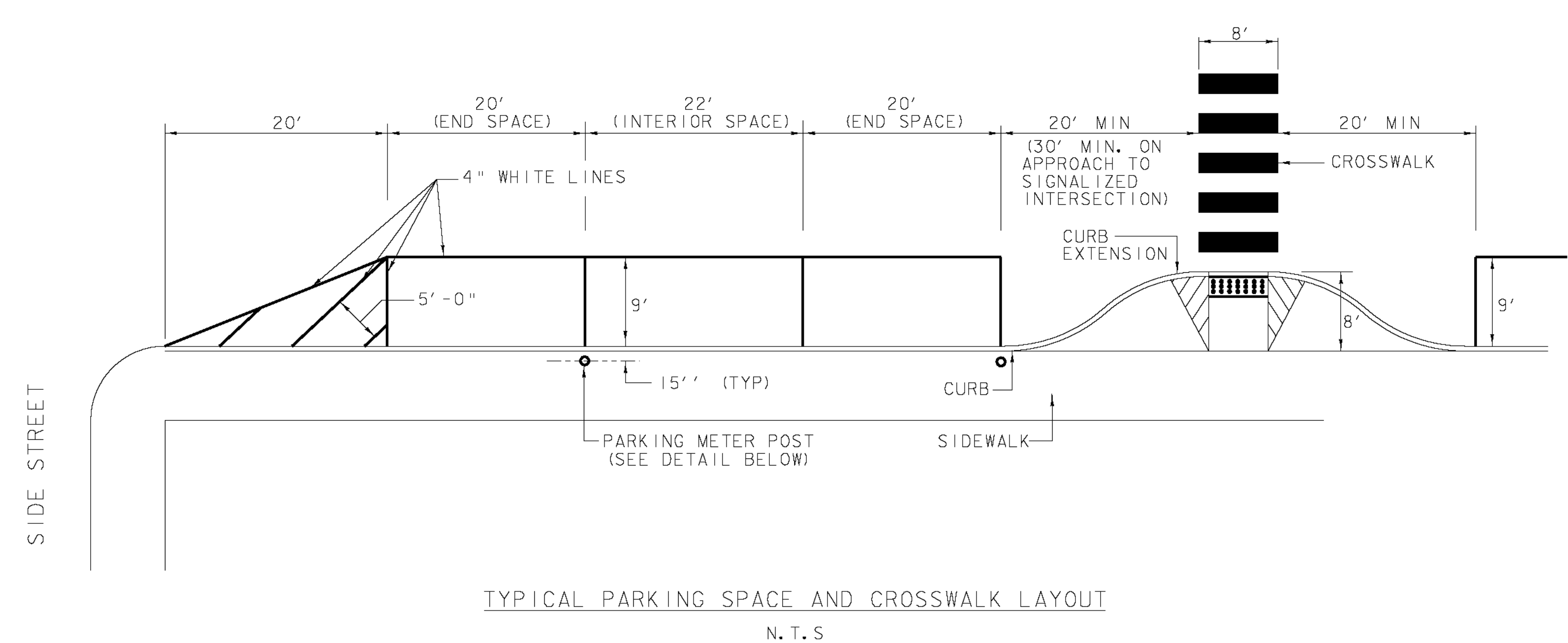
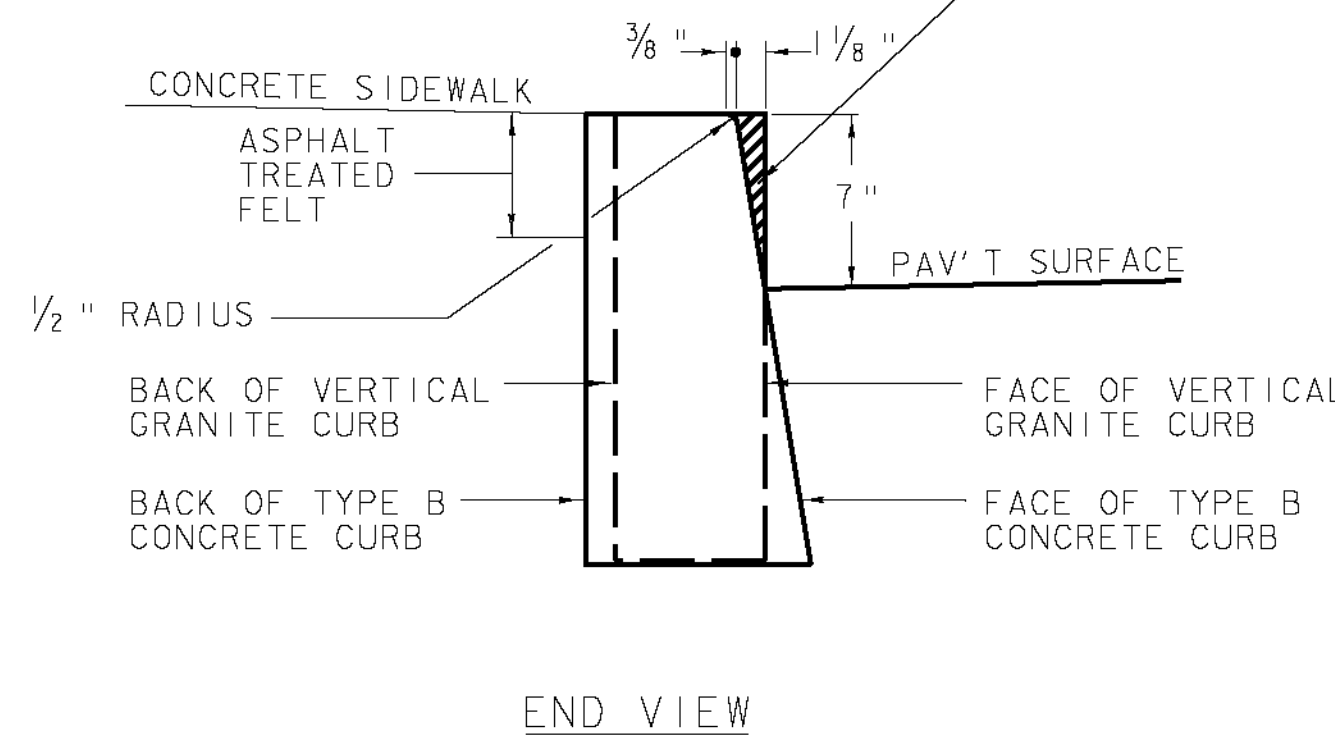


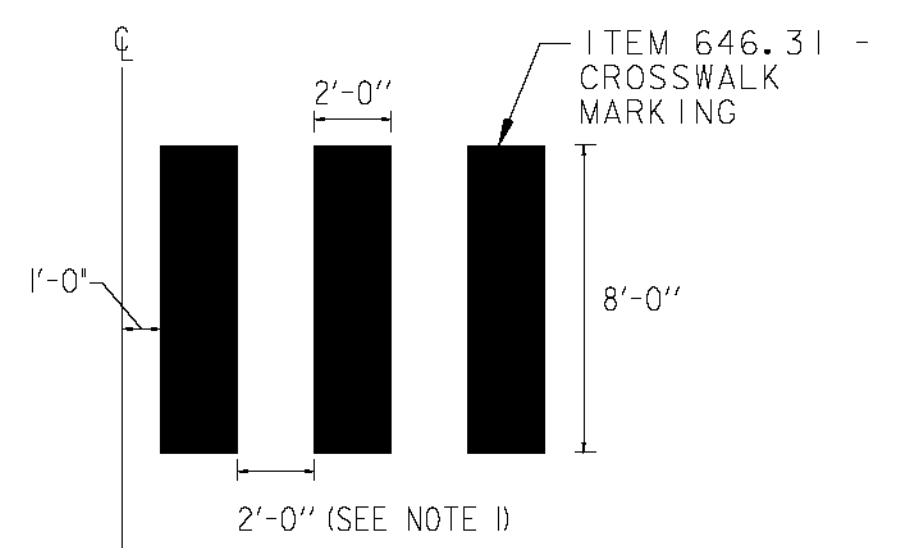
CAST CONCRETE CURB WITH CHAMFER TO MATCH GRANITE IN FIELD. CHAMFER TO MATCH AT CONCRETE/GRANITE JOINT AND BLEND TO FULL SECTION OF GRANITE CURB OVER 2'-0" MINIMUM LENGTH OF CONCRETE. NO SEPARATE PAYMENT WILL BE MADE FOR THE TRANSITION. THE COST WILL BE INCIDENTAL TO CAST-IN-PLACE CONCRETE CURB.



CONCRETE TO GRANITE CURB TRANSITION

VERMONT ROUTE 62

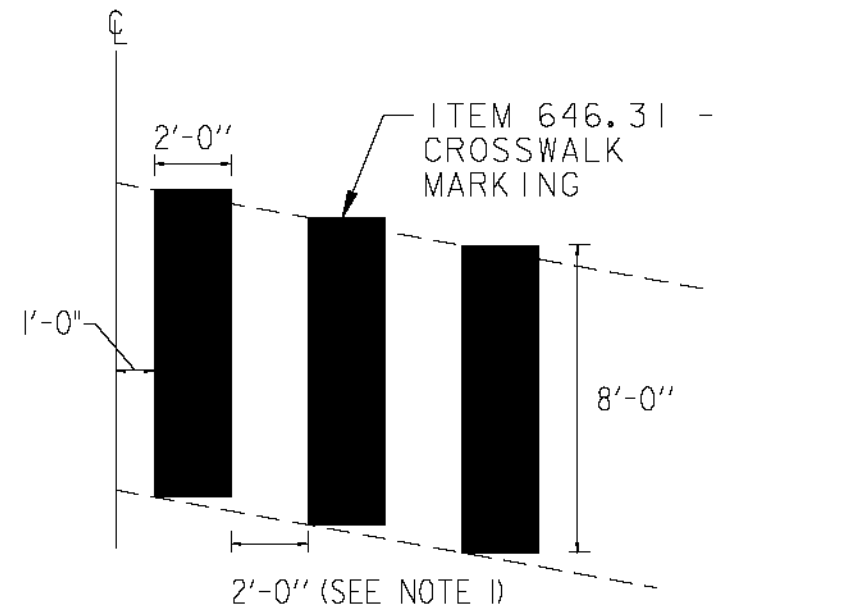
STA 10+64 LT
STA 11+10 RT
SIDE STREETS
N. T. S.



BLOCK STYLE CROSSWALK MARKING (90 DEGREE)

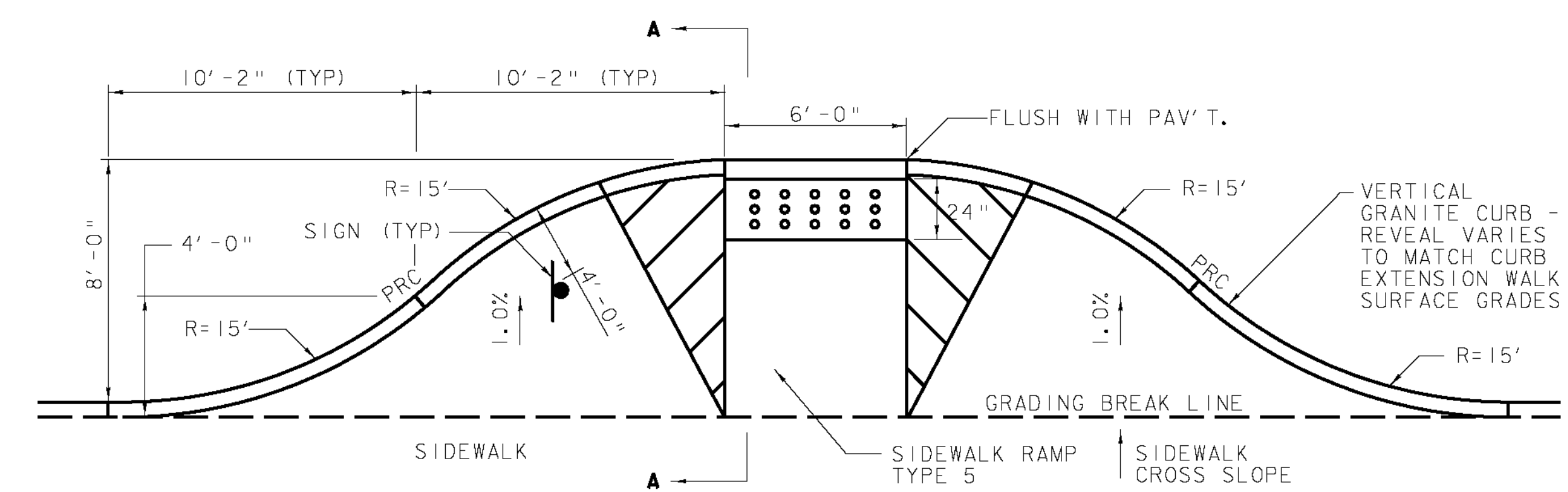
N. T. S.

1. ADJUST SPACING (12" TO 24") TO AVOID WHEEL PATHS
2. BLOCKS SHOULD BE INSTALLED PARALLEL TO TRAFFIC FLOW. FOR SKEWED CROSSINGS, OFFSET BLOCKS LATERALLY AS NEEDED.



BLOCK STYLE CROSSWALK MARKING (ON SKEW)

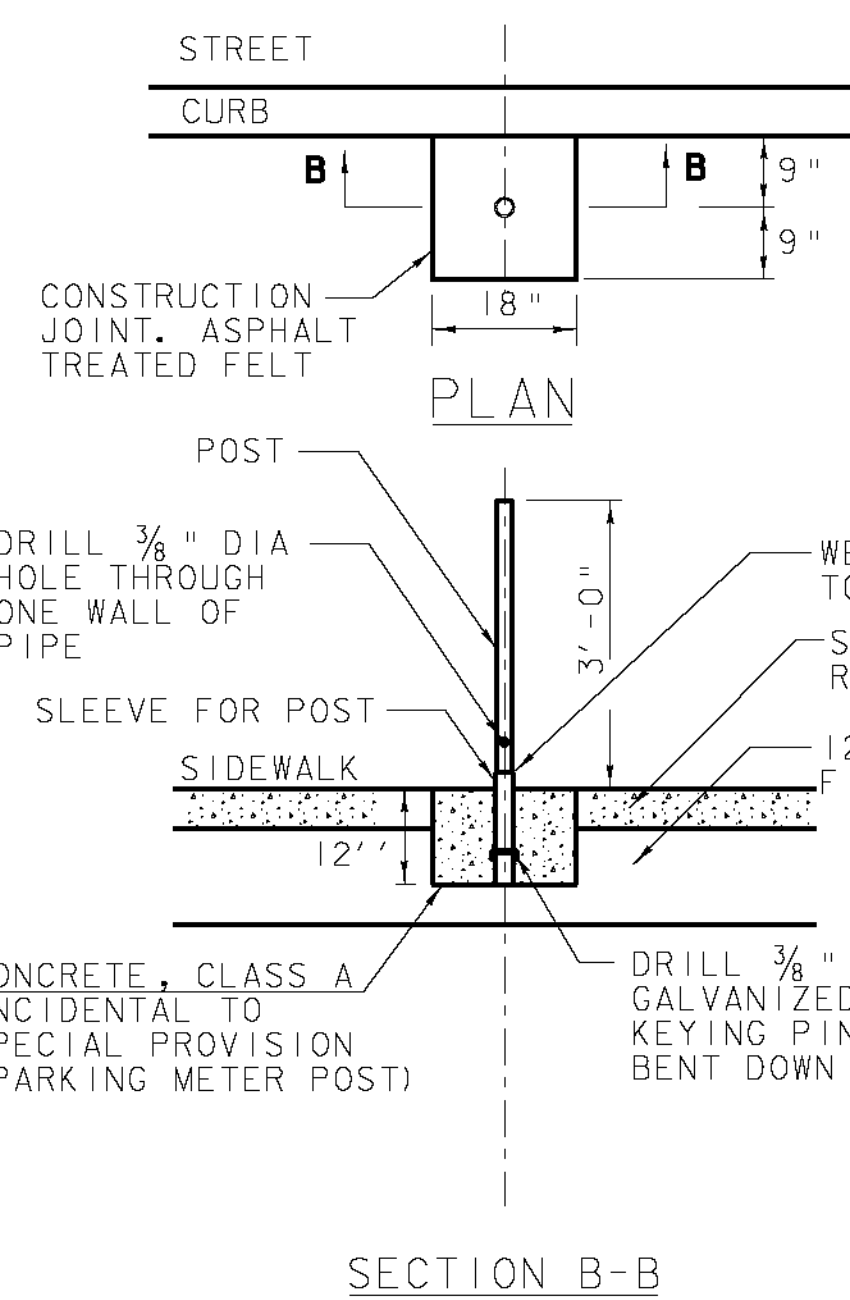
N. T. S.



NOTE: REFER TO VT STANDARD SHEETS C-3A & C-3B FOR ADDITIONAL SIDEWALK RAMP CONSTRUCTION DETAILS.

TYPICAL CURB EXTENSION

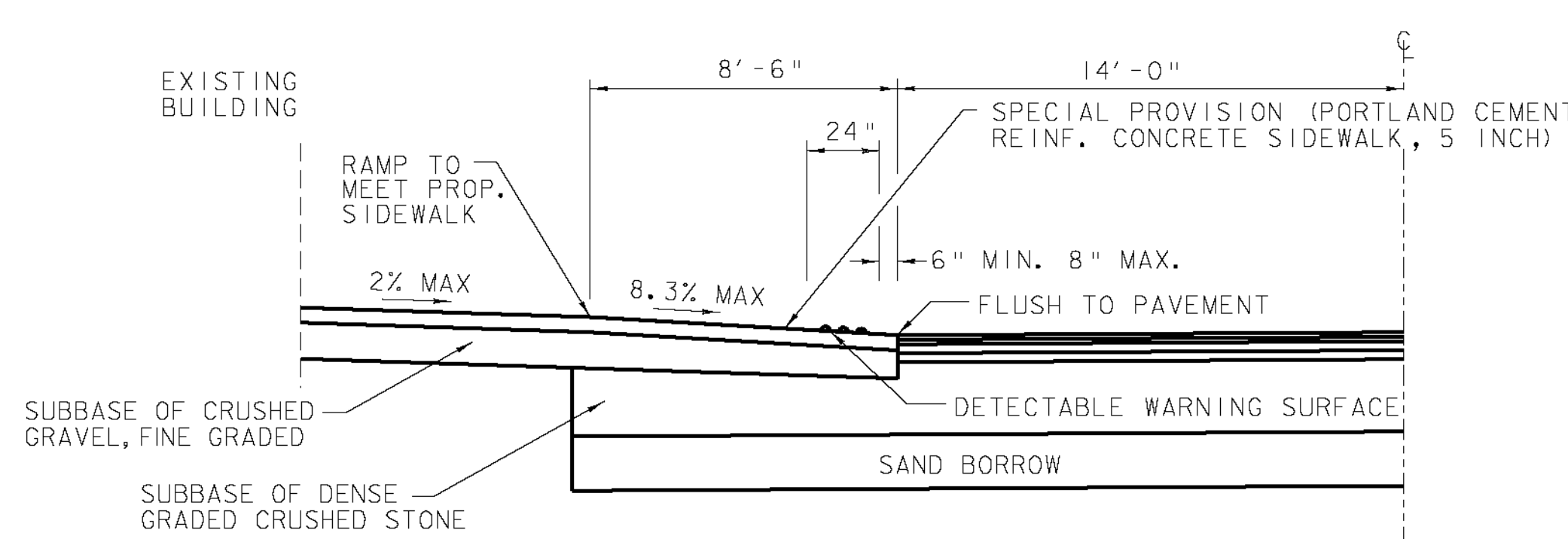
N. T. S.



NOTE:
SEE SIGNS AND PAVEMENT MARKING PLANS FOR PARKING METER POST LOCATIONS.

PARKING METER POST INSTALLATION

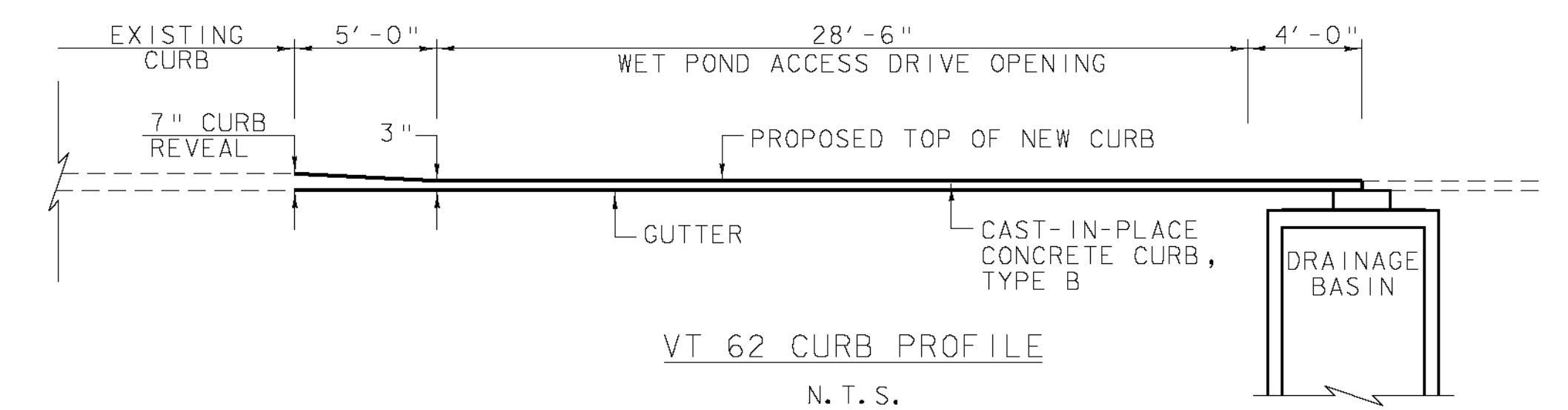
N. T. S.



NOTE:
SEE SHEETS 3-5 FOR SIDEWALK AND PAVEMENT STRUCTURES.

CURB EXTENSION SECTION A-A

N. T. S.



PROJECT NAME: BARRE CITY
PROJECT NUMBER: FECC F 026-1(34) C/2

FILE NAME: 85b010_DET_C2
PROJECT LEADER: G. BAKOS
DESIGNED BY: DMP / MDS
CONSTRUCTION DETAILS #1

PLOT DATE: 3/9/2011
DRAWN BY: DMP / JAR
CHECKED BY:
SHEET 6 OF 339