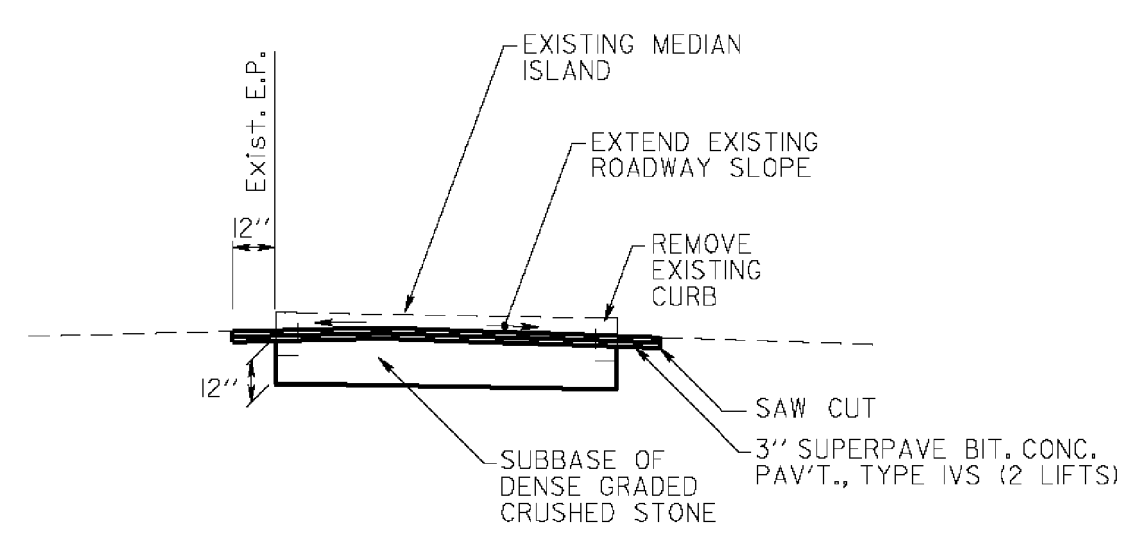
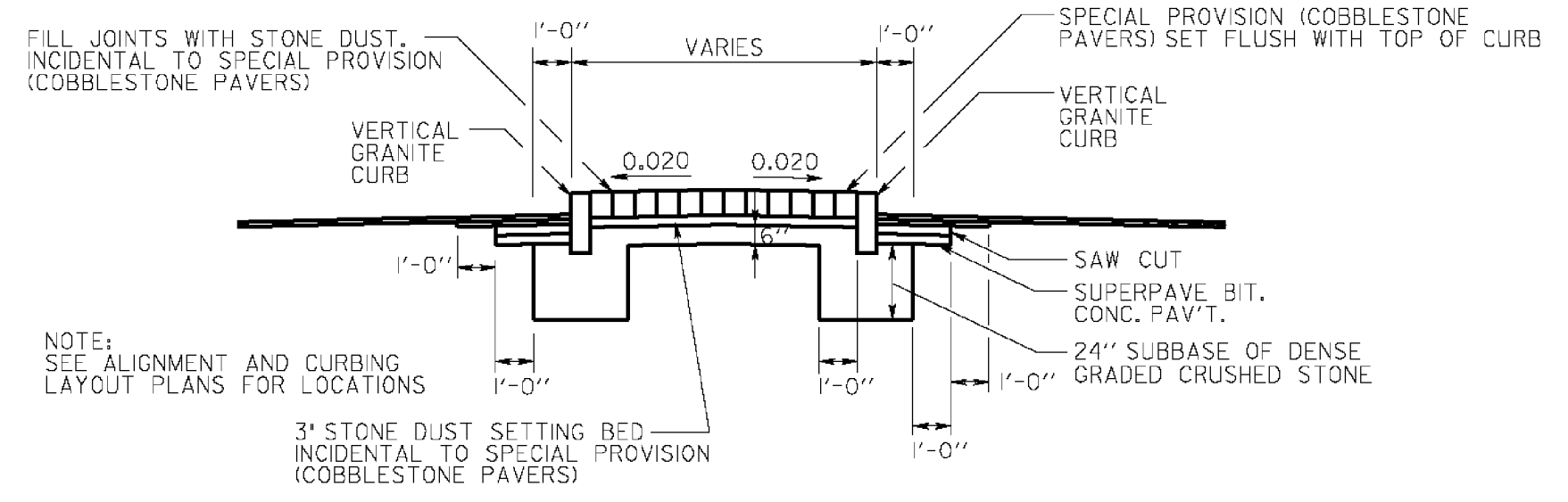


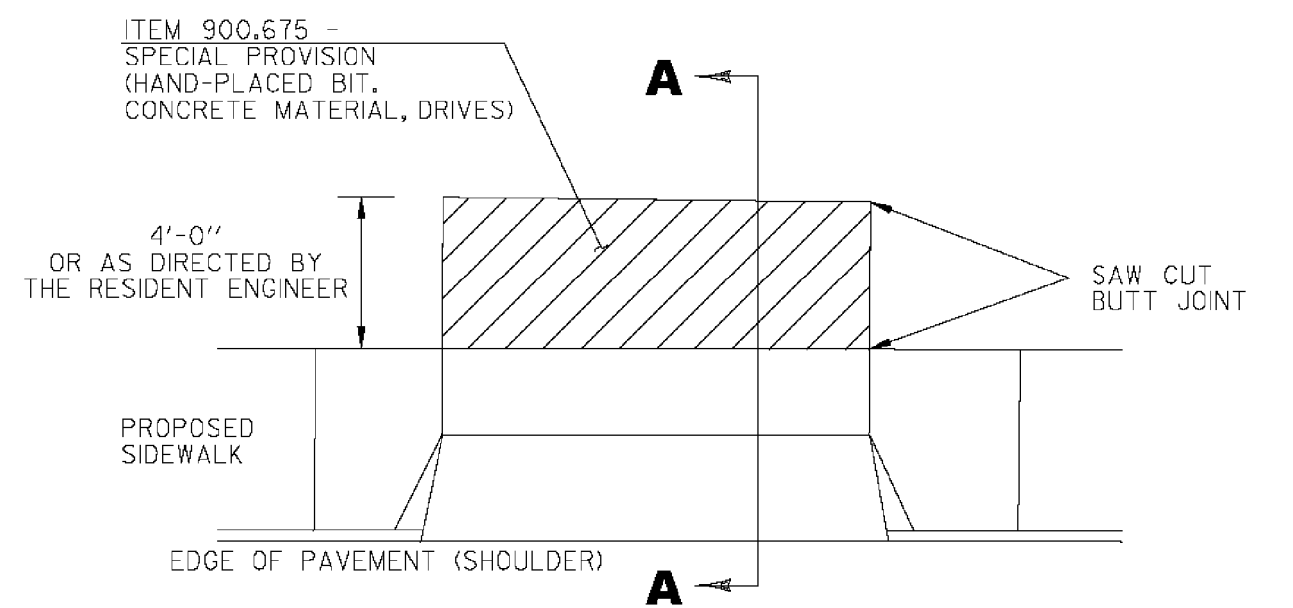
**MEDIAN ISLAND PLANTING BED**  
N.T.S.  
VT 62 STA 10+70 - 11+00  
STA 11+52 - 11+68  
MAPLE AVE. STA 20+47 - 20+75



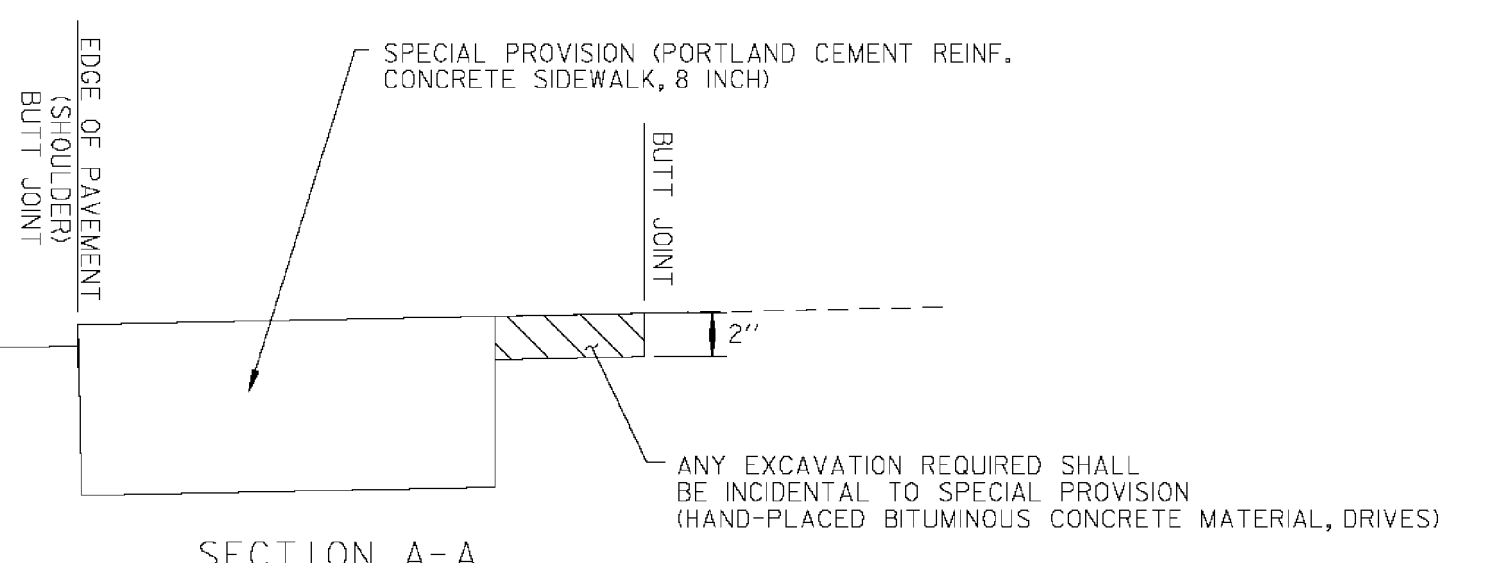
**TEMPORARY STAGING**  
N.T.S.  
MAPLE AVE. STA 20+47 - 20+95  
VT 62 STA. 10+55 - 12+63



**MEDIAN ISLAND COBBLESTONES**  
N.T.S.  
VT 62 STA 10+56 - 10+70  
STA 10+82 - 11+52  
STA 11+68 - 12+57  
NORTH MAIN STREET STA 600+45 - 601+24

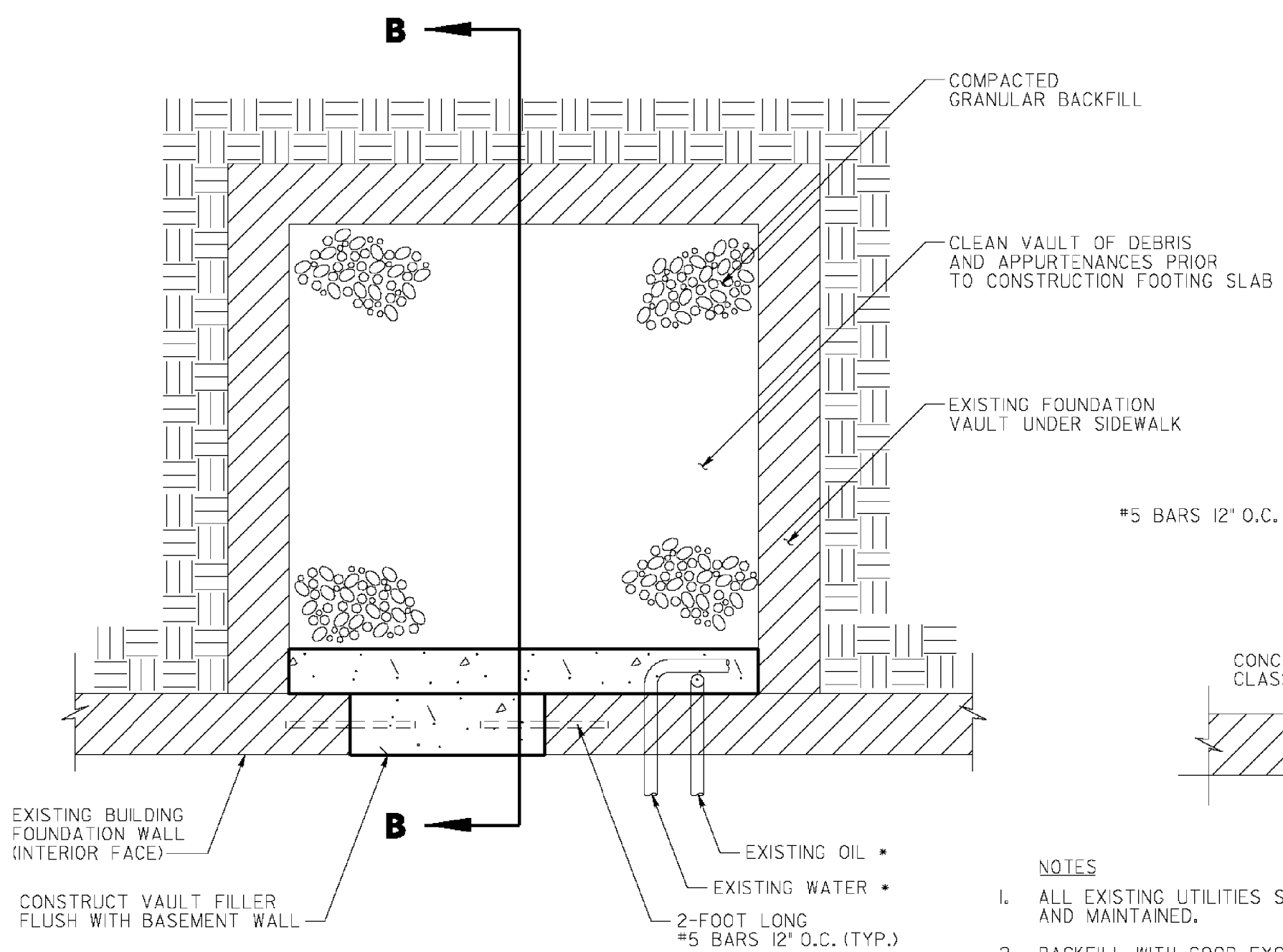


**PLAN**

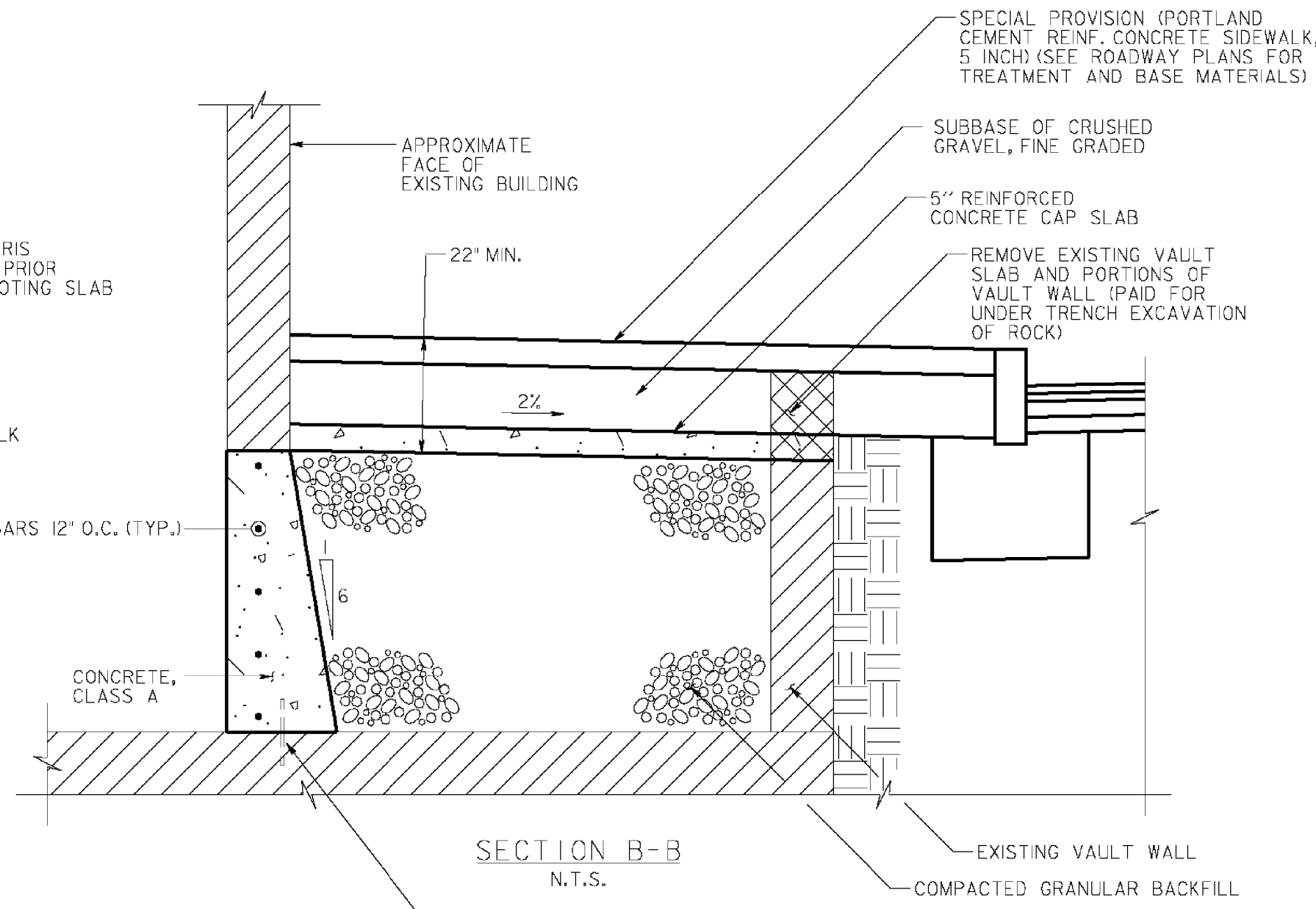


**SECTION A-A**

**HANDWORK DETAILS FOR PAVED DRIVES**



**SCHEMATIC SIDEWALK VAULT CLOSURE SECTION**  
N.T.S.  
STA 600+50 RT.



**SECTION B-B**  
N.T.S.

**NOTES**

1. ALL EXISTING UTILITIES SHALL BE SUPPORTED AND MAINTAINED.
2. BACKFILL WITH GOOD EXCAVATED MATERIAL FROM CONSTRUCTION SITE, OR GRANULAR MATERIAL 16" LIFTS, OR AS DIRECTED BY ENGINEER.
3. CONTRACTOR MAY FIND OTHER AREAS ON THE PROJECT SITE WITH SIMILAR CONDITIONS UNDER THE SIDEWALK.
4. ALL OF THE ABOVE WORK SHALL BE PAID UNDER THE RESPECTIVE BID ITEMS.
5. CONTRACTOR SHALL APPLY WATERPROOFING TO NEW BASEMENT CONCRETE, INCIDENTAL TO THE WORK.

STATION	POSITION	QUANTITY (SF)
111+78	RT	9.9
112+02	LT	6.7
112+48	LT	14.4
112+55	RT	14.2
SL 13+11	RT	319.8
114+93	RT	16.8
115+12	LT	28.7
115+60	LT	43.6
116+09	LT	52.3
116+27	RT	43.6
117+44	RT	6.5
118+49	RT	3.4
118+75	RT	241.3
120+26	LT	4.9
122+76	RT	3.3
SL 41+45	LT	6.1
125+90	LT	32.0
126+49	LT	9.9
129+51	LT	3.0
131+14	LT	12.5
136+71	LT	1.7