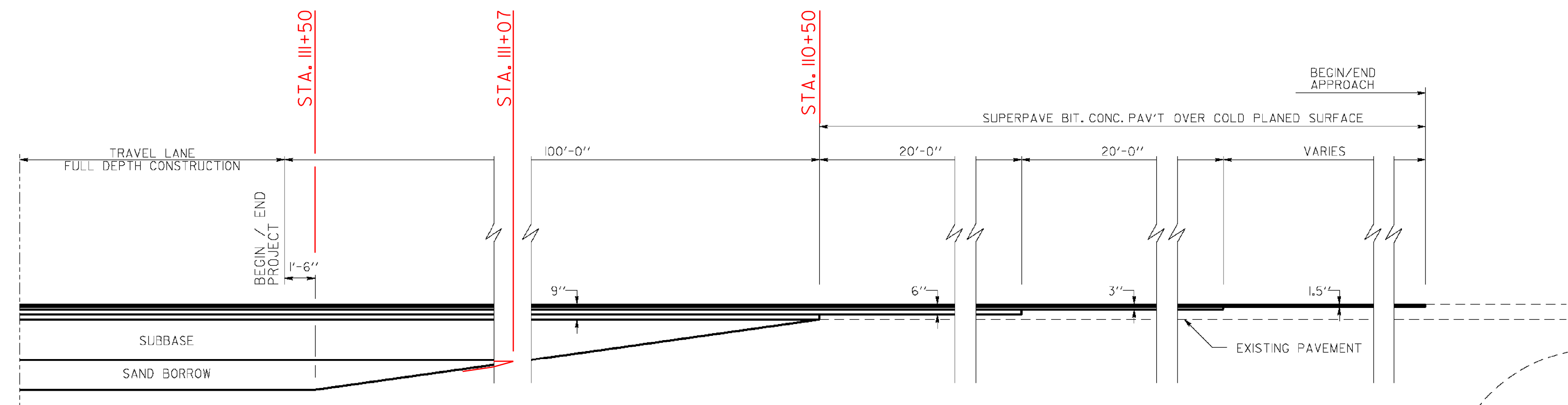
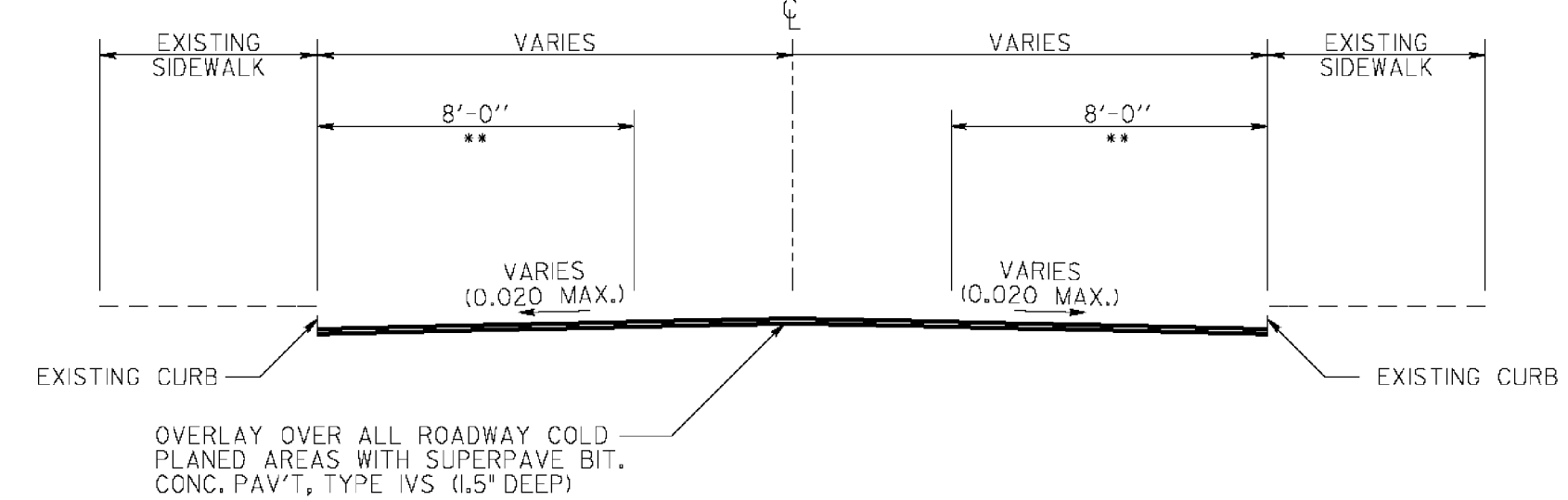


SIDE STREET TRANSITION  
N.T.S.

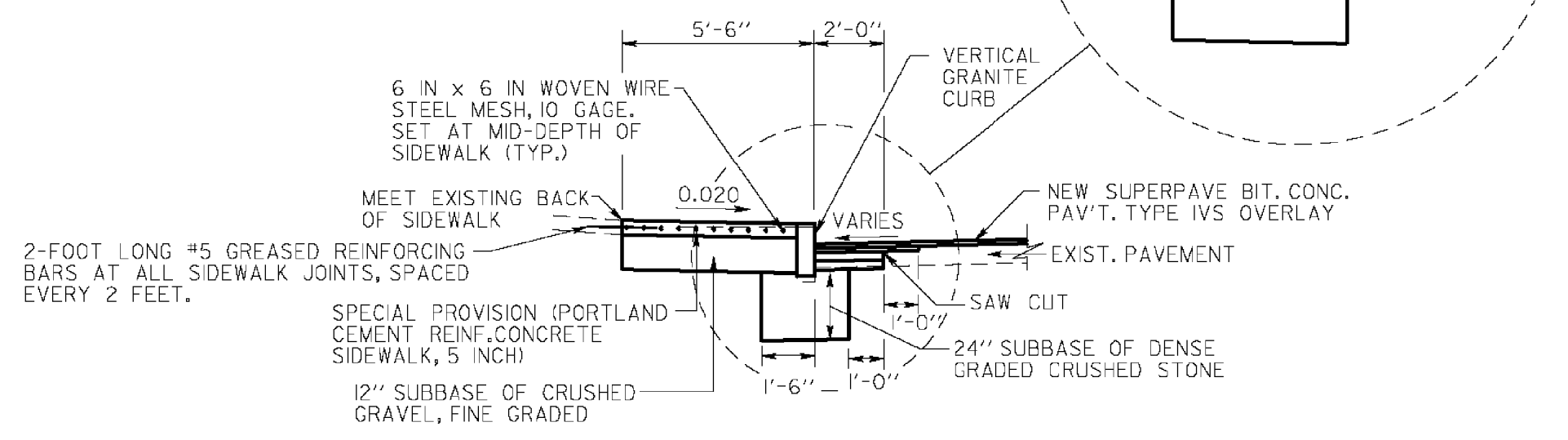


NORTH MAIN STREET TRANSITION  
N.T.S.

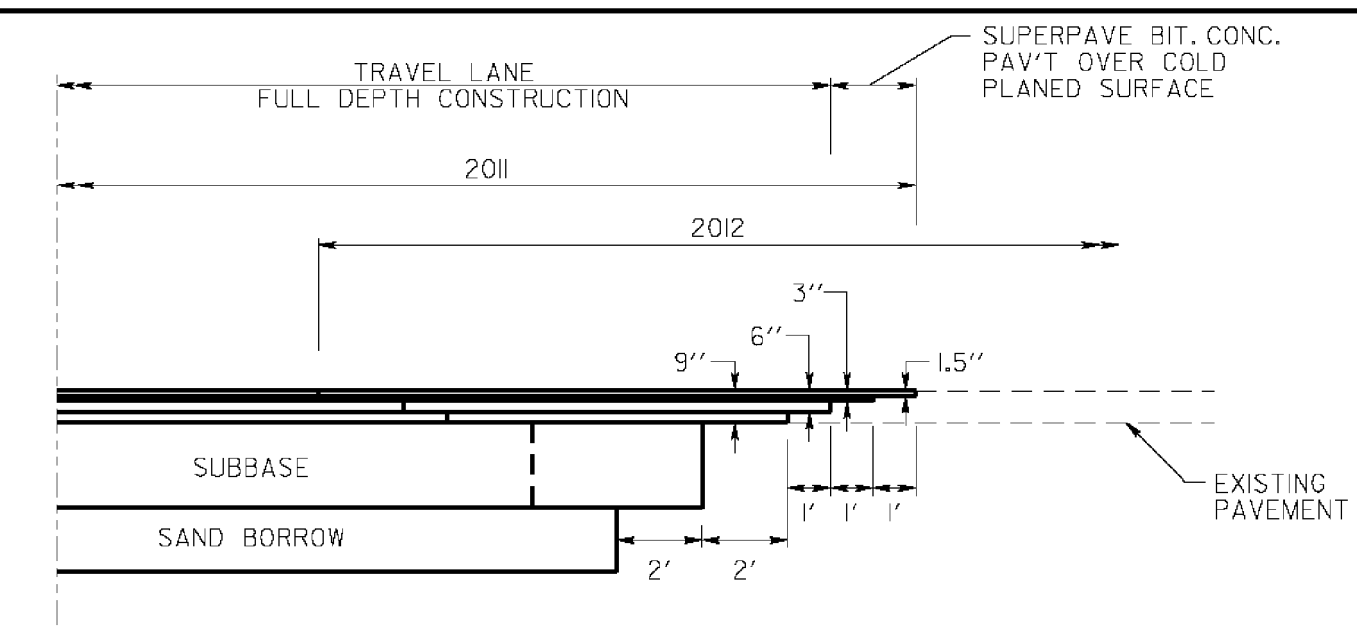


NOTE:  
THE COLD PLANING DEPTH MAY EXCEED 2" AT 8'-0" FROM THE CUTTER LINE IN ORDER TO MAXIMIZE REVEAL AT THE FACE OF EXISTING CURB (7" MAX. REVEAL).

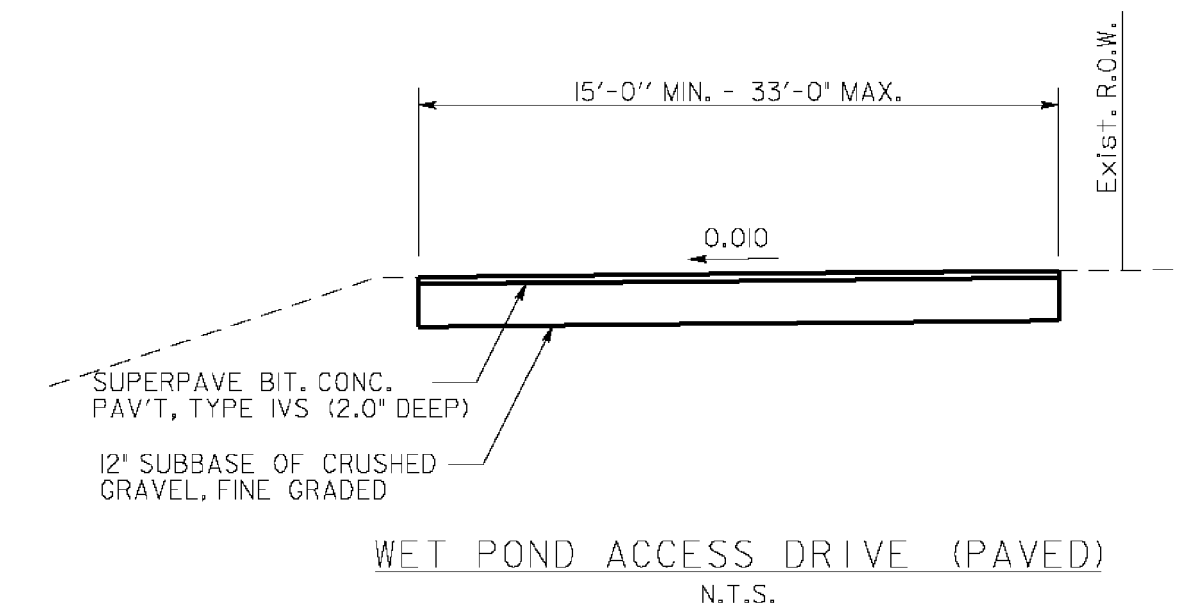
COLD PLANING / RESURFACING  
SEE PLANS FOR LOCATIONS  
N.T.S.



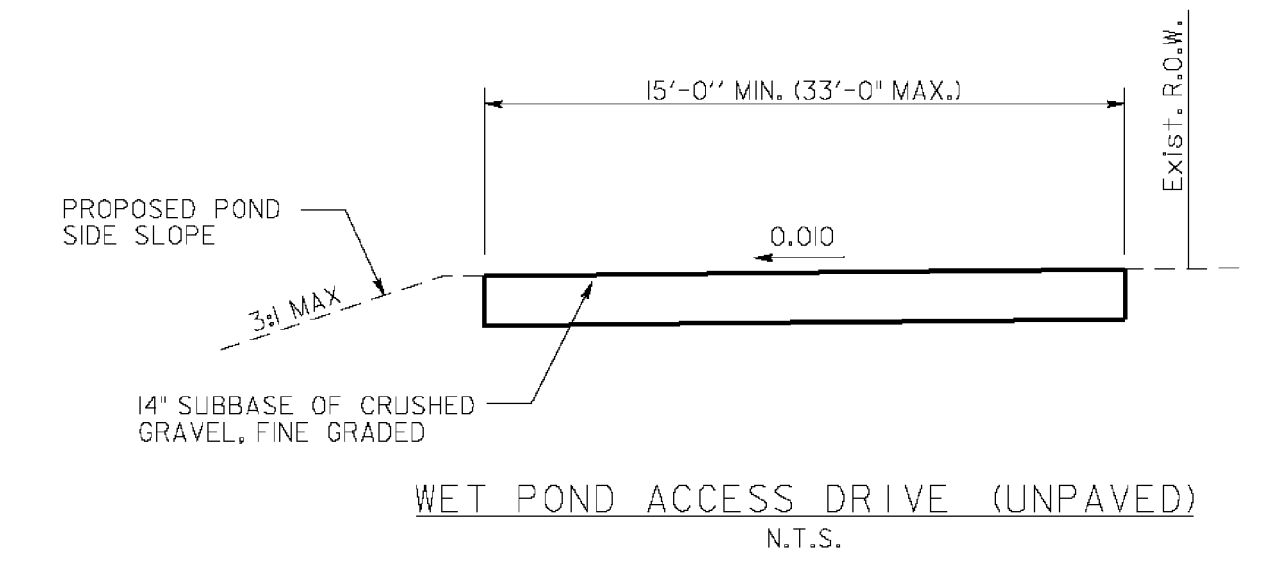
SIDEWALK CONSTRUCTION AT OVERLAY AREAS  
N.T.S.



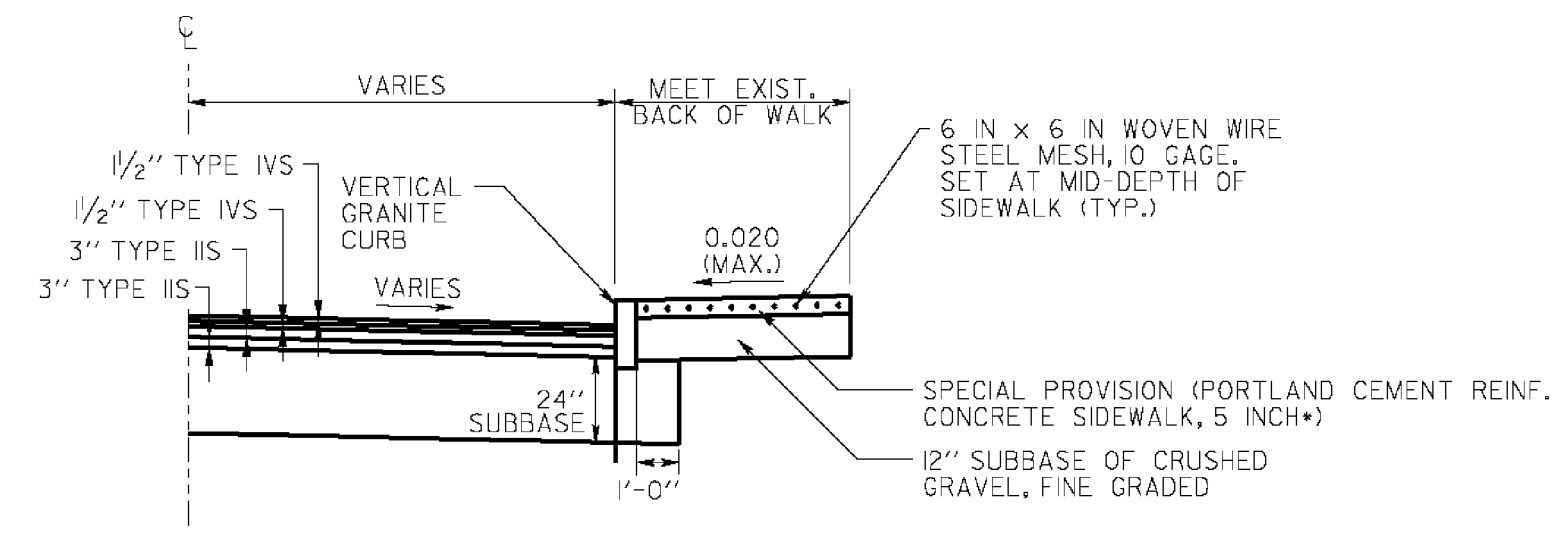
END OF SEASON PAVEMENT TRANSITION DETAIL  
N.T.S.



WET POND ACCESS DRIVE (PAVED)  
N.T.S.



WET POND ACCESS DRIVE (UNPAVED)  
N.T.S.



SIDE STREET (FULL DEPTH)  
N.T.S.

NOTE:  
SEE SIDE STREET TRANSITION DETAIL FOR ADDITIONAL INFORMATION

NOTE:  
AT COMMERCIAL DRIVES, USE SPECIAL PROVISION (PORTLAND CEMENT REINF. CONCRETE SIDEWALK, 8 INCH)

1/2" SUPERPAVE BIT. CONC. PAV'T TYPE IVS  
1/2" SUPERPAVE BIT. CONC. PAV'T TYPE IVS  
3" SUPERPAVE BIT. CONC. PAV'T TYPE IIS  
3" SUPERPAVE BIT. CONC. PAV'T TYPE IIS  
24" SUBBASE OF DENSE GRADED CRUSHED STONE

PROJECT NAME:	BARRE CITY	PLOT DATE:	3/9/2011
PROJECT NUMBER:	FEGC F 026-1(34) C/2	DRAWN BY:	DMP / JAR
FILE NAME:	85b010_TYP_C2	CHECKED BY:	
PROJECT LEADER:	G. BAKOS	TYPICAL SECTIONS	#2
DESIGNED BY:	DMP / MDS		
		SHEET	4 OF 339