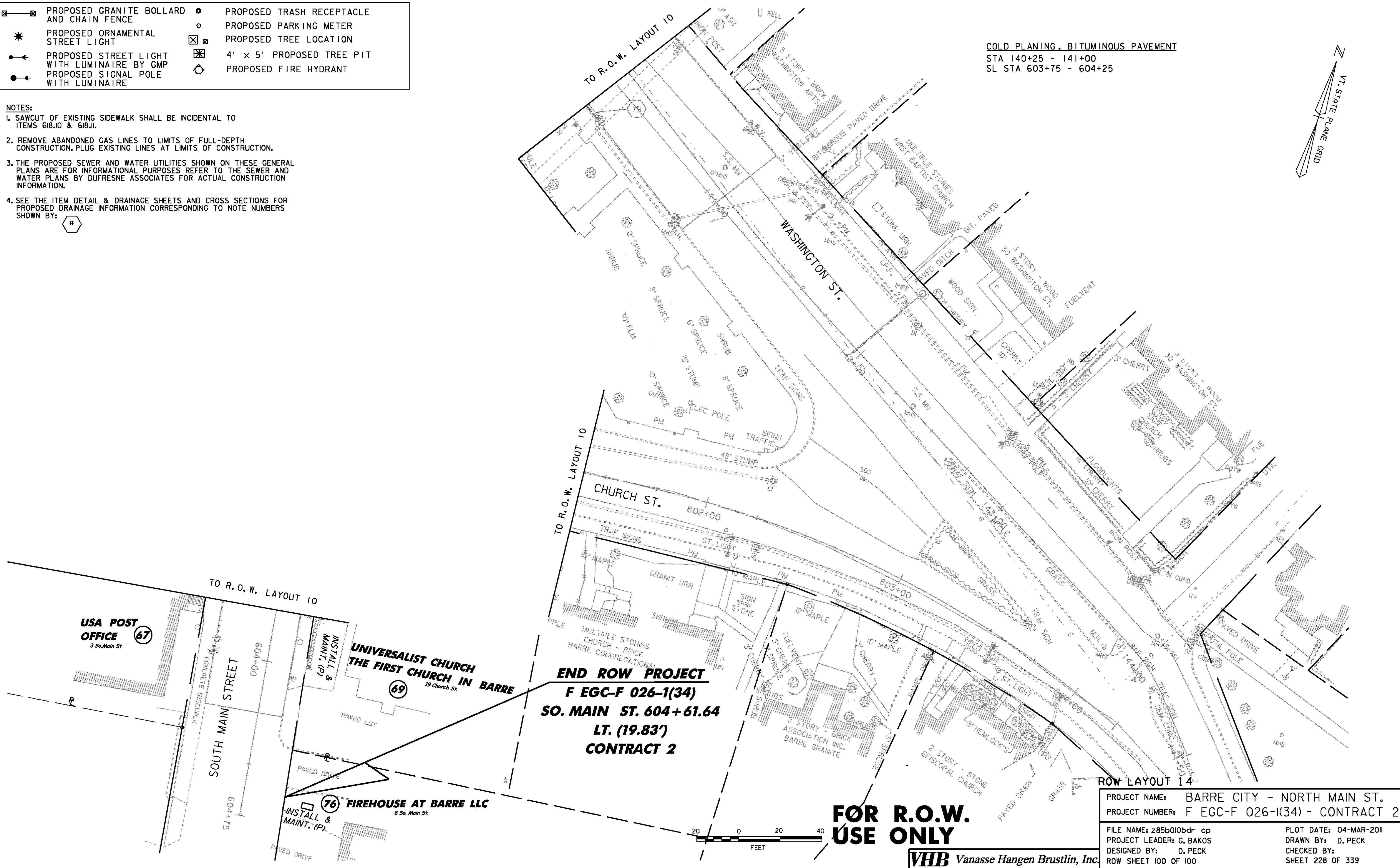
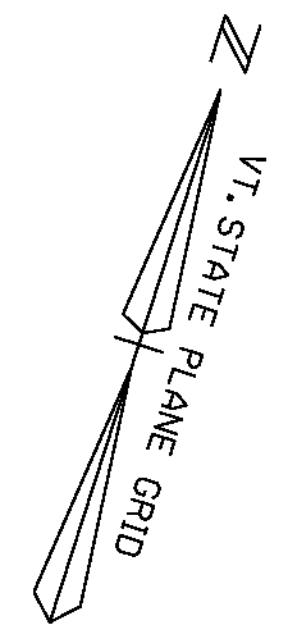


	PROPOSED GRANITE BOLLARD AND CHAIN FENCE		PROPOSED TRASH RECEPTACLE
	PROPOSED ORNAMENTAL STREET LIGHT		PROPOSED PARKING METER
	PROPOSED STREET LIGHT WITH LUMINAIRE BY GMP		PROPOSED TREE LOCATION
	PROPOSED SIGNAL POLE WITH LUMINAIRE		4' x 5' PROPOSED TREE PIT
			PROPOSED FIRE HYDRANT

NOTES:

1. SAWCUT OF EXISTING SIDEWALK SHALL BE INCIDENTAL TO ITEMS 618.i0 & 618.i1.
2. REMOVE ABANDONED GAS LINES TO LIMITS OF FULL-DEPTH CONSTRUCTION. PLUG EXISTING LINES AT LIMITS OF CONSTRUCTION.
3. THE PROPOSED SEWER AND WATER UTILITIES SHOWN ON THESE GENERAL PLANS ARE FOR INFORMATIONAL PURPOSES REFER TO THE SEWER AND WATER PLANS BY DUFRESNE ASSOCIATES FOR ACTUAL CONSTRUCTION INFORMATION.
4. SEE THE ITEM DETAIL & DRAINAGE SHEETS AND CROSS SECTIONS FOR PROPOSED DRAINAGE INFORMATION CORRESPONDING TO NOTE NUMBERS SHOWN BY:

COLD PLANING, BITUMINOUS PAVEMENT
 STA 140+25 - 141+00
 SL STA 603+75 - 604+25



END ROW PROJECT
F EGC-F 026-1(34)
SO. MAIN ST. 604+61.64
LT. (19.83')
CONTRACT 2

FOR R.O.W. USE ONLY



PROJECT NAME:	BARRE CITY - NORTH MAIN ST.	PLOT DATE:	04-MAR-2011
PROJECT NUMBER:	F EGC-F 026-1(34) - CONTRACT 2	DRAWN BY:	D. PECK
FILE NAME:	z85b010bdr cp	DESIGNED BY:	D. PECK
PROJECT LEADER:	G. BAKOS	ROW SHEET	100 OF 100
CHECKED BY:	D. PECK	SHEET	228 OF 339

VHB Vanasse Hangen Brustlin, Inc.