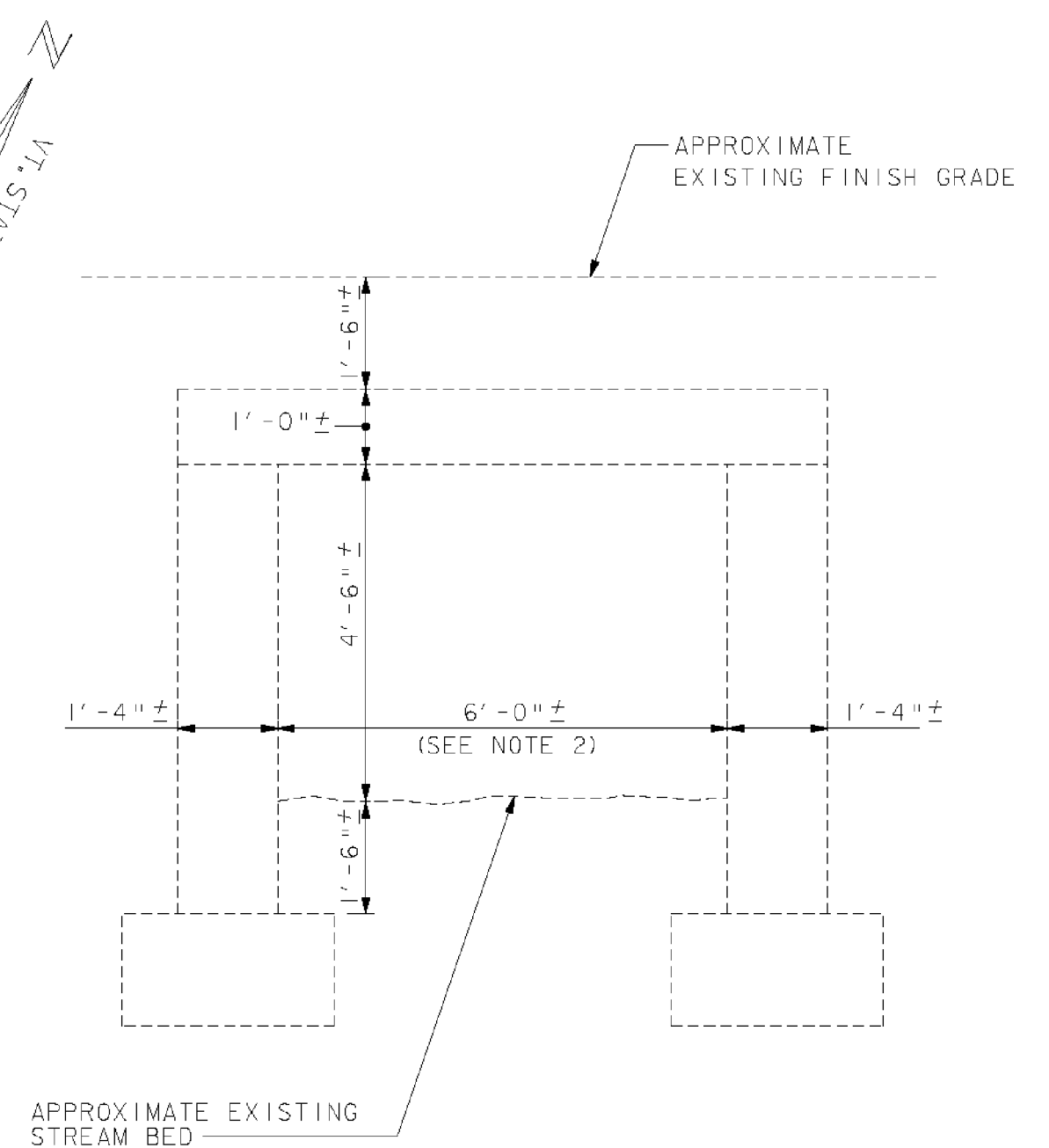
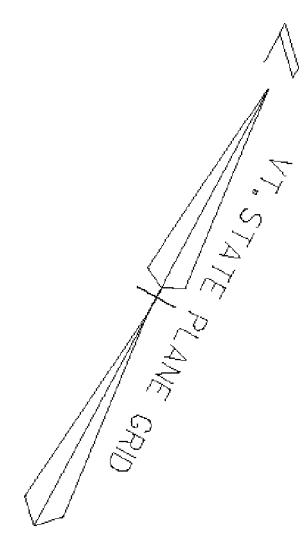
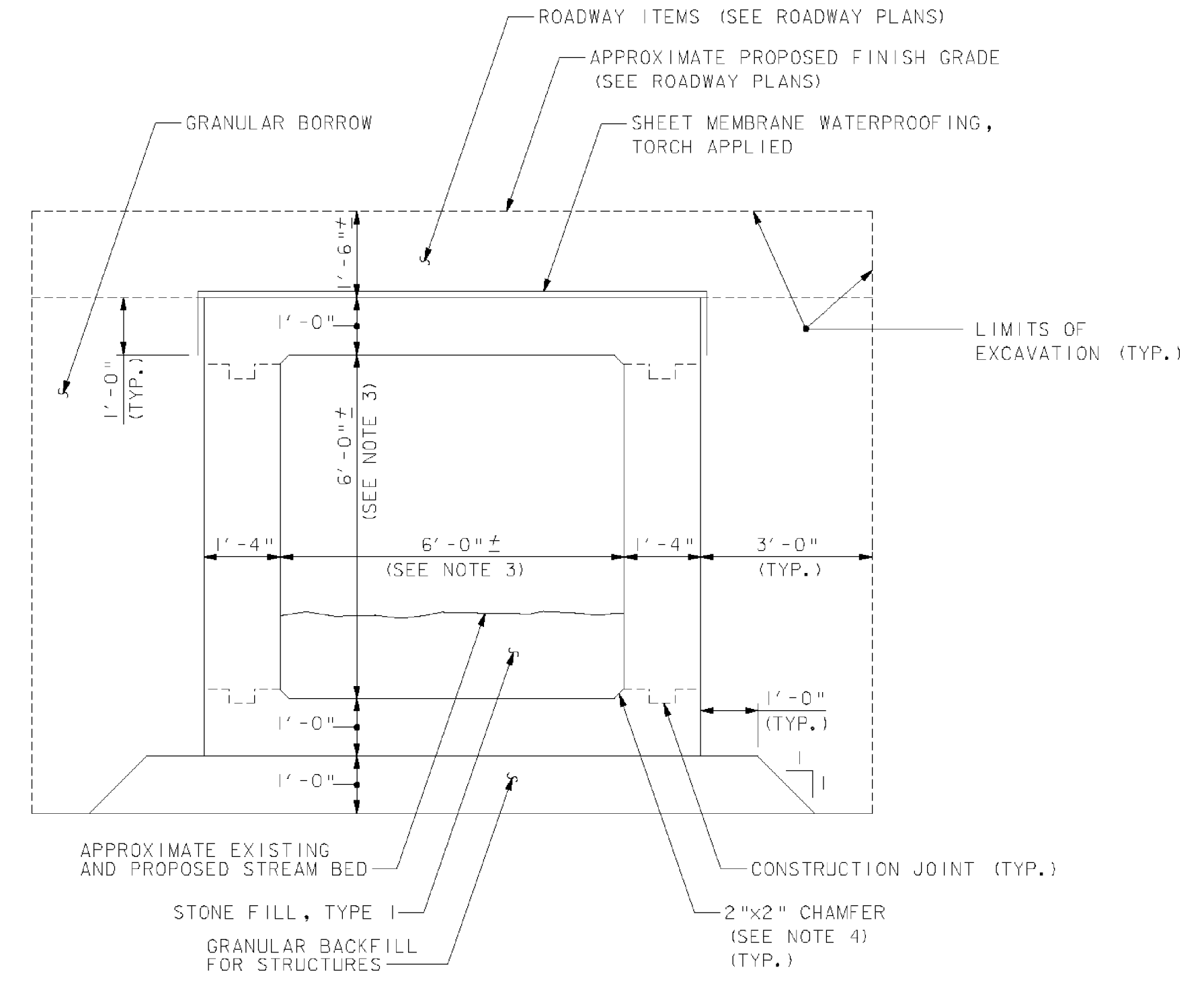


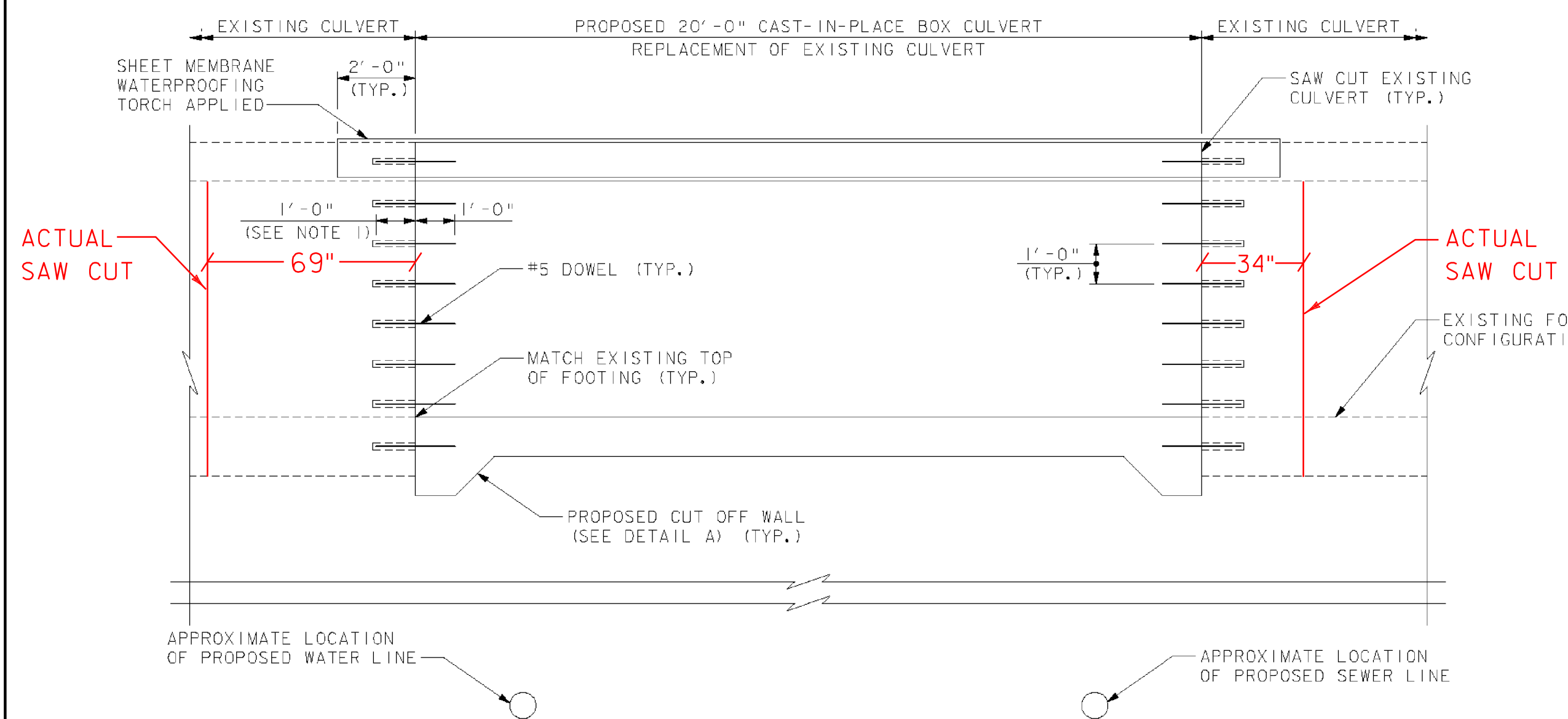
PLAN  
SCALE: 3/8" = 1'-0"



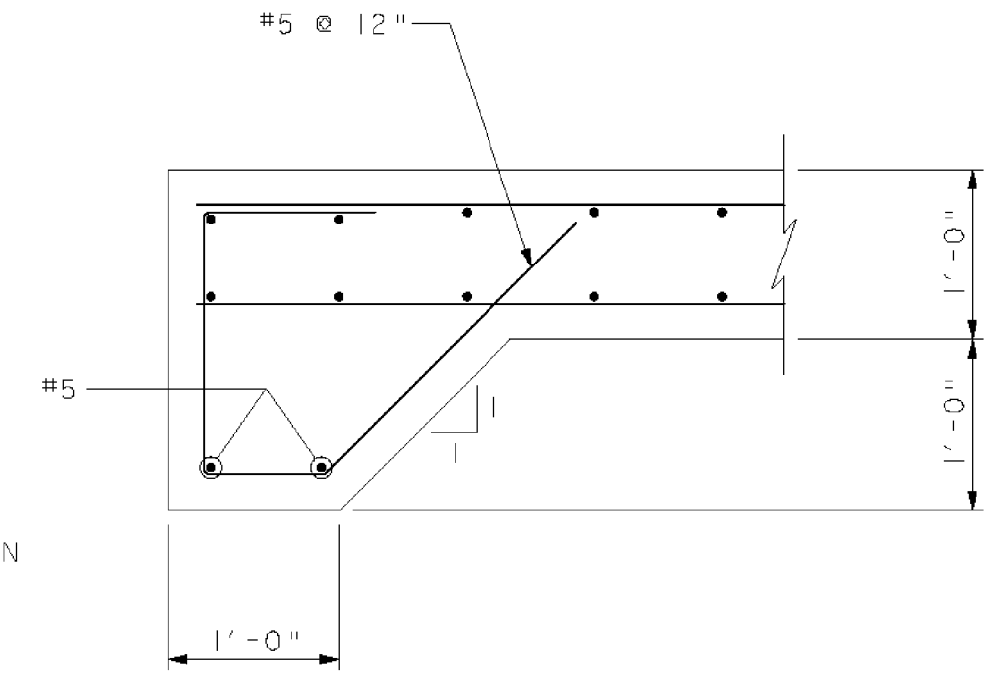
EXISTING TYPICAL SECTION  
NOT TO SCALE



PROPOSED TYPICAL SECTION  
SCALE: 1/2" = 1'-0"

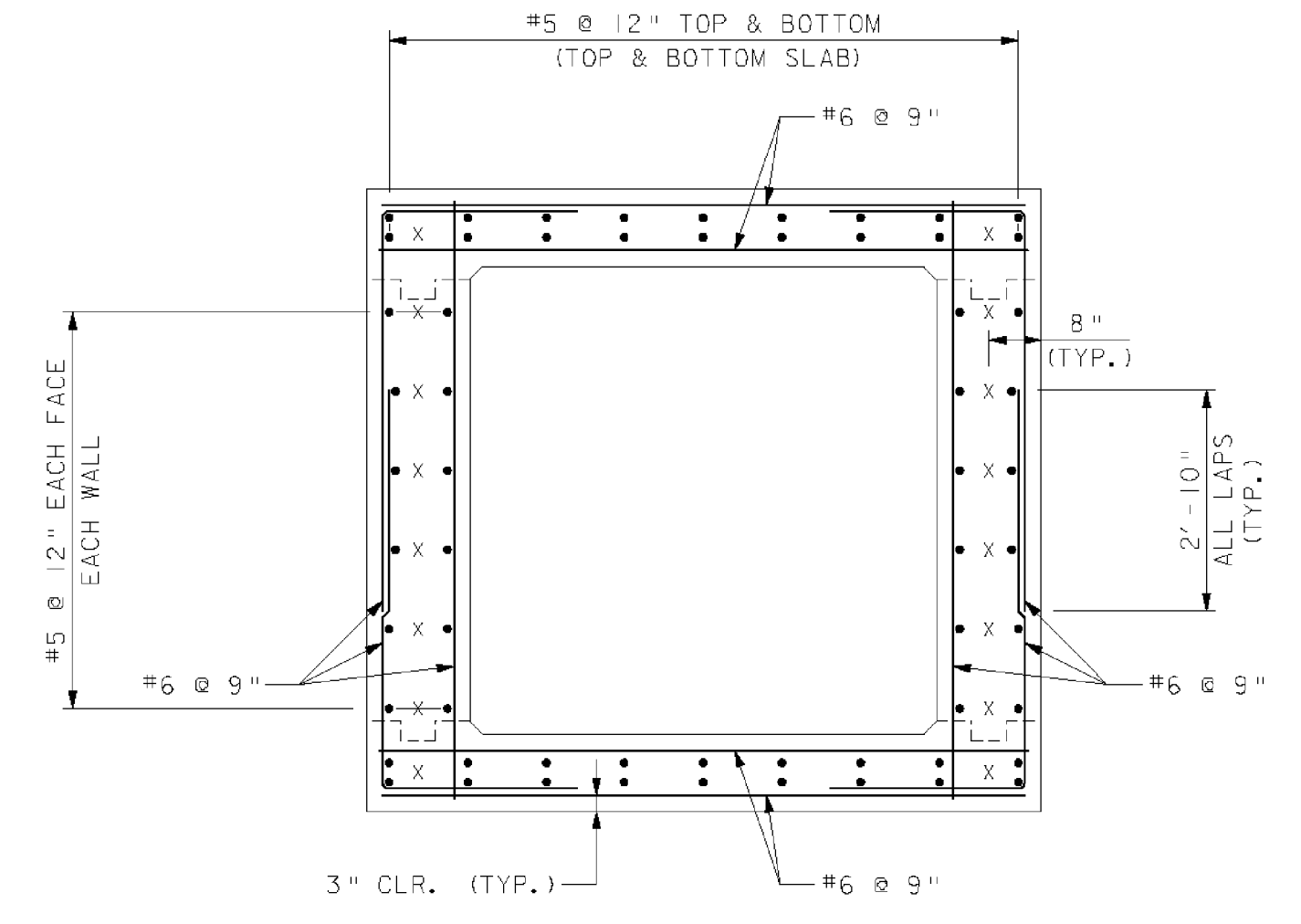


LONGITUDINAL SECTION  
SCALE: 3/8" = 1'-0"

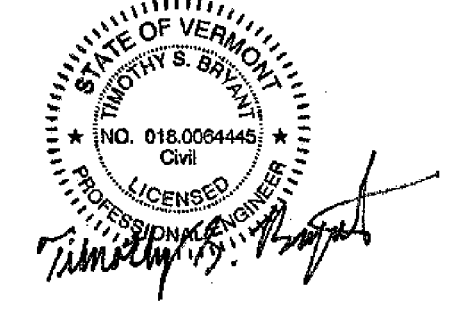


DETAIL A  
SCALE: 1" = 1'-0"

- NOTES:
1. SEE SPECIFICATION SECTION 03301 "PARTIAL REPLACEMENT OF EXISTING CONCRETE CULVERT" IN MUNICIPAL WATER AND SEWER SPECIFICATIONS FOR ADDITIONAL INFORMATION.
  2. ALL DIMENSIONS OF EXISTING CULVERT SHOWN ARE BASED ON LIMITED FIELD MEASUREMENTS. THE CONTRACTOR SHALL FIELD VERIFY THE EXISTING CONDITIONS AND NOTIFY THE ENGINEER OF ANY DISCREPANCIES PRIOR TO COMMENCEMENT OF WORK.
  3. MATCH EXISTING CULVERT INTERIOR DIMENSIONS. FORMS SHALL PROVIDE A SMOOTH INTERIOR TRANSITION FROM THE EXISTING CULVERT TO THE PROPOSED BOX CULVERT WALLS AND TOP SLAB.
  4. A PROPOSED 2"x2" CHAMFER IS SHOWN AT EACH INTERIOR CORNER. ADJUST CHAMFER SIZE AS NECESSARY OR ELIMINATE IT COMPLETELY TO MATCH EXISTING CULVERT.
  5. DRILL AND GROUT #5 DOWELS 1'-0" INTO CENTER OF EXISTING CULVERT WALLS, TOP SLAB AND FOOTINGS AS SHOWN. FOR LOCATION OF DOWELS, SEE TYPICAL REINFORCING SECTION.
  6. PAYMENT FOR ALL MATERIALS AND WORK SHOWN SHALL BE MADE UNDER CONTRACT ITEM 900.645 - SPECIAL PROVISION (REMOVE AND REPAIR BOX CULVERT).



TYPICAL REINFORCING SECTION  
SCALE: 1/2" = 1'-0"  
X = LOCATION OF #5 DOWEL, SEE LONGITUDINAL SECTION.



VHB Vanasse Hangen Brustlin, Inc.

PROJECT NAME:	BARRE CITY	PLOT DATE:	3/31/2011
PROJECT NUMBER:	FEGC F 026-(K34) C/2	DRAWN BY:	K. WENTWORTH
FILE NAME:	z85b010_culvert.dgn	DESIGNED BY:	GME/MAC III
PROJECT LEADER:	G. BAKOS	CHECKED BY:	G. EDINGTON
BOX CULVERT DETAILS		SHEET	158 OF 339