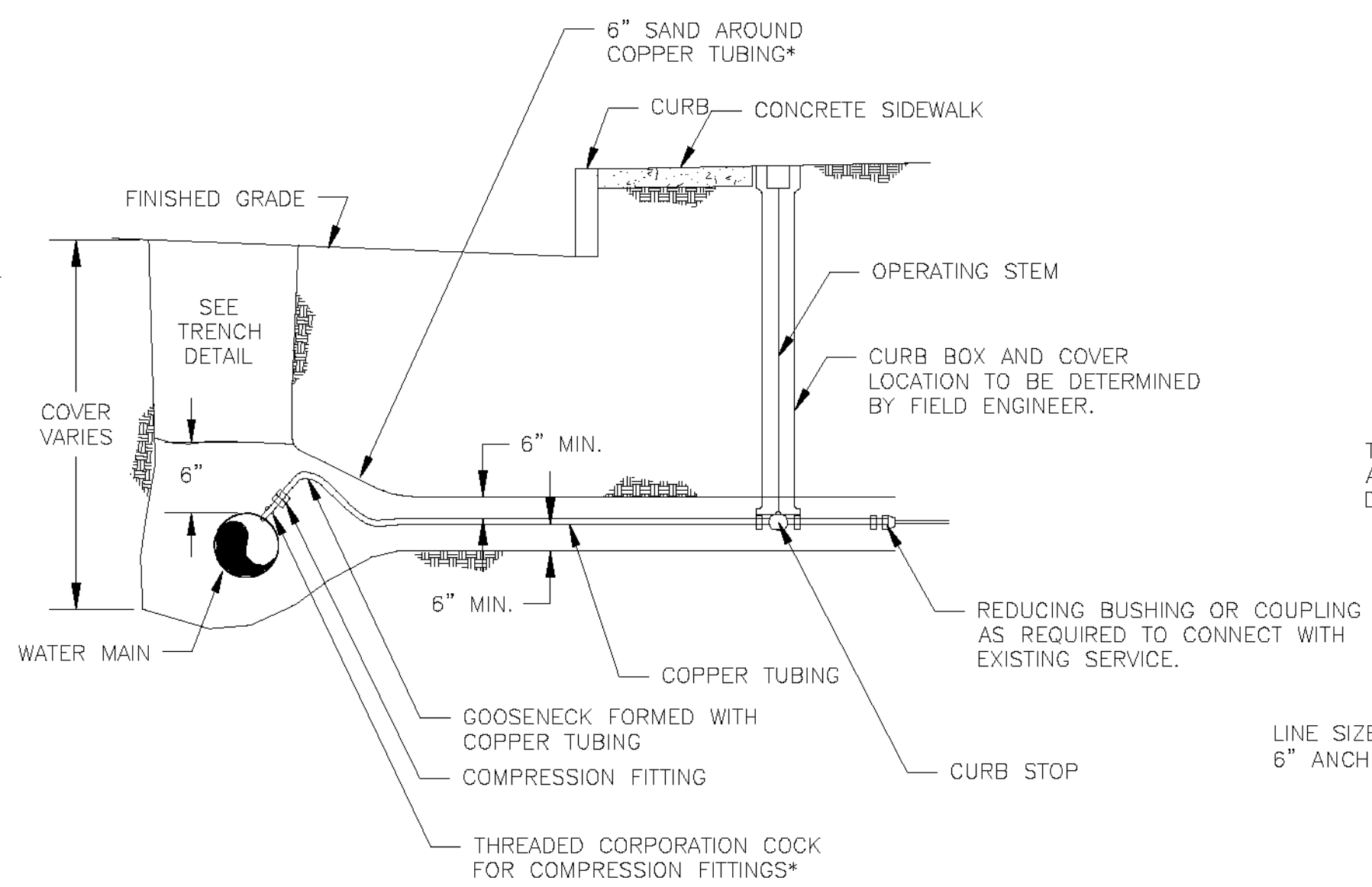


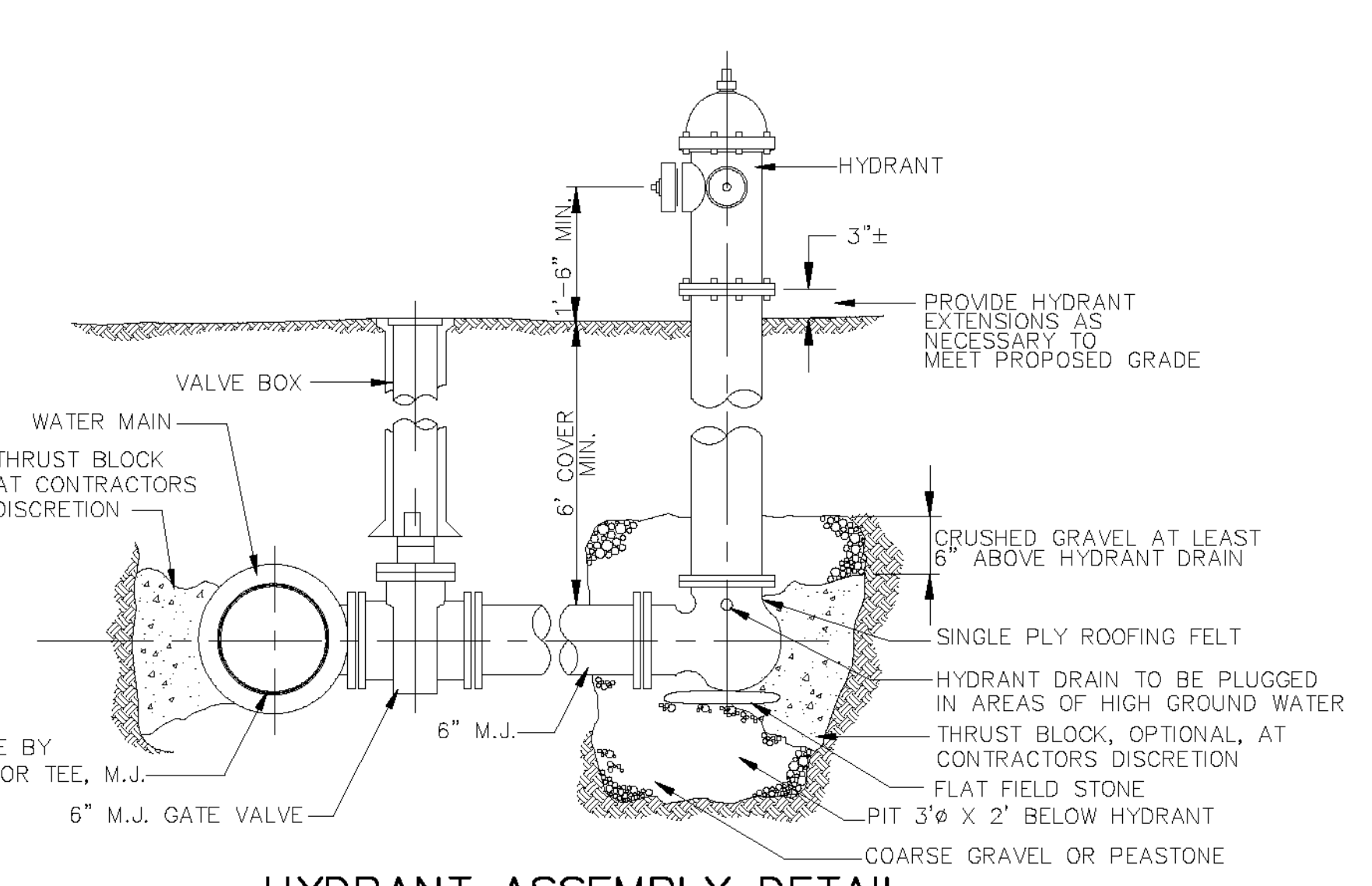
- NOTES:**
1. ALL SPRINKLERS TO BE 6" AND VALVES LOCATED AT THE CURB LINE.
  2. ADDITIONAL BENDS OR FITTINGS MAY BE REQUIRED, SEE PLAN SHEETS.
  3. ALL SPRINKLER CONNECTION MUST HAVE SINGLE CHECK VALVE INSTALLED AT THE CONNECTION TO THE INTERIOR PLUMBING.

**SPRINKLER SERVICE DETAIL**  
NOT TO SCALE

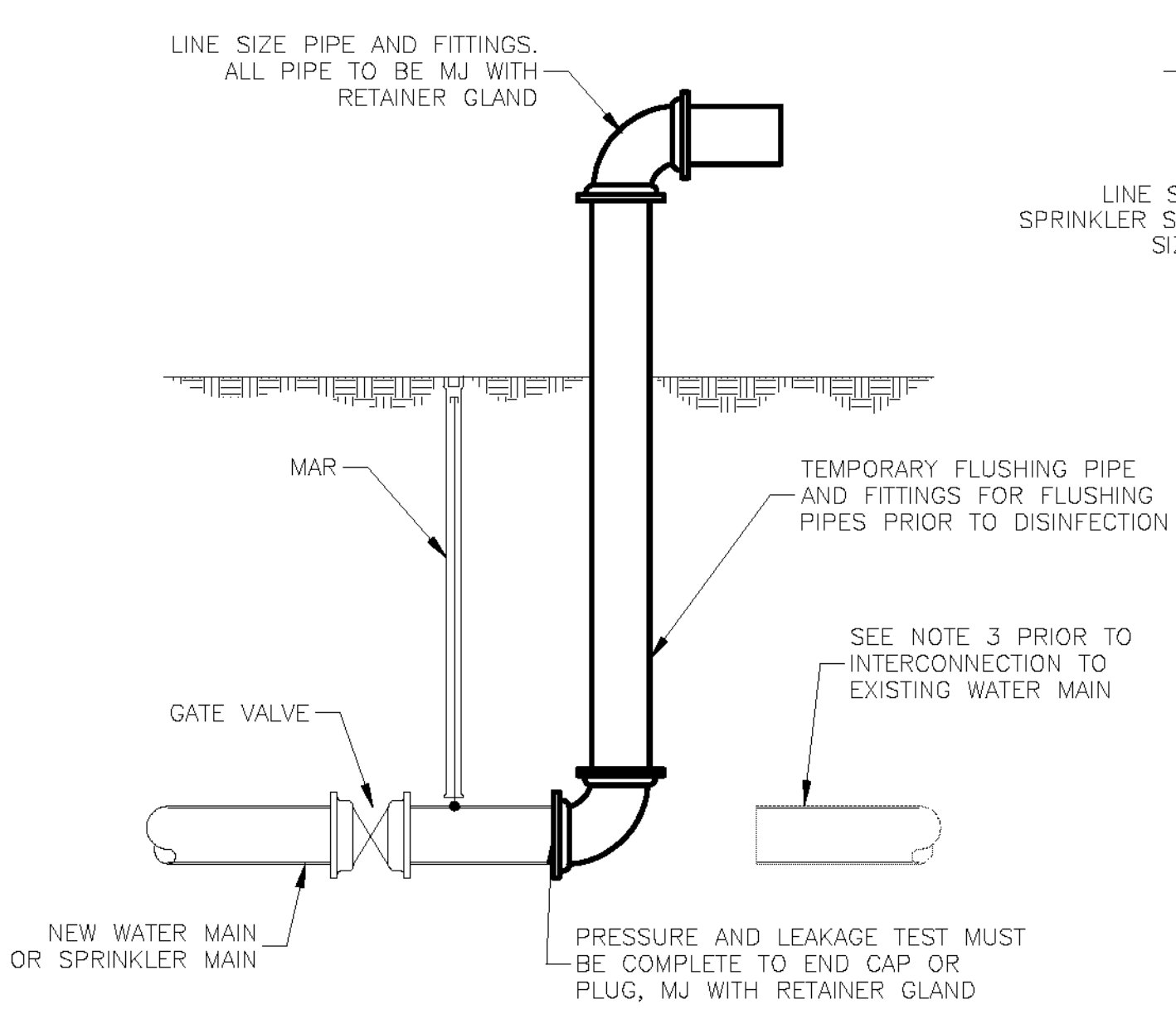


\* NEW COPPER TUBING AND FITTING SIZES TO BE 1-1/2". SEE WATER SERVICE AND SIZE SCHEDULE THIS SHEET FOR EXISTING SIZES.

**TYPICAL WATER SERVICE CONNECTION DETAIL**  
NOT TO SCALE

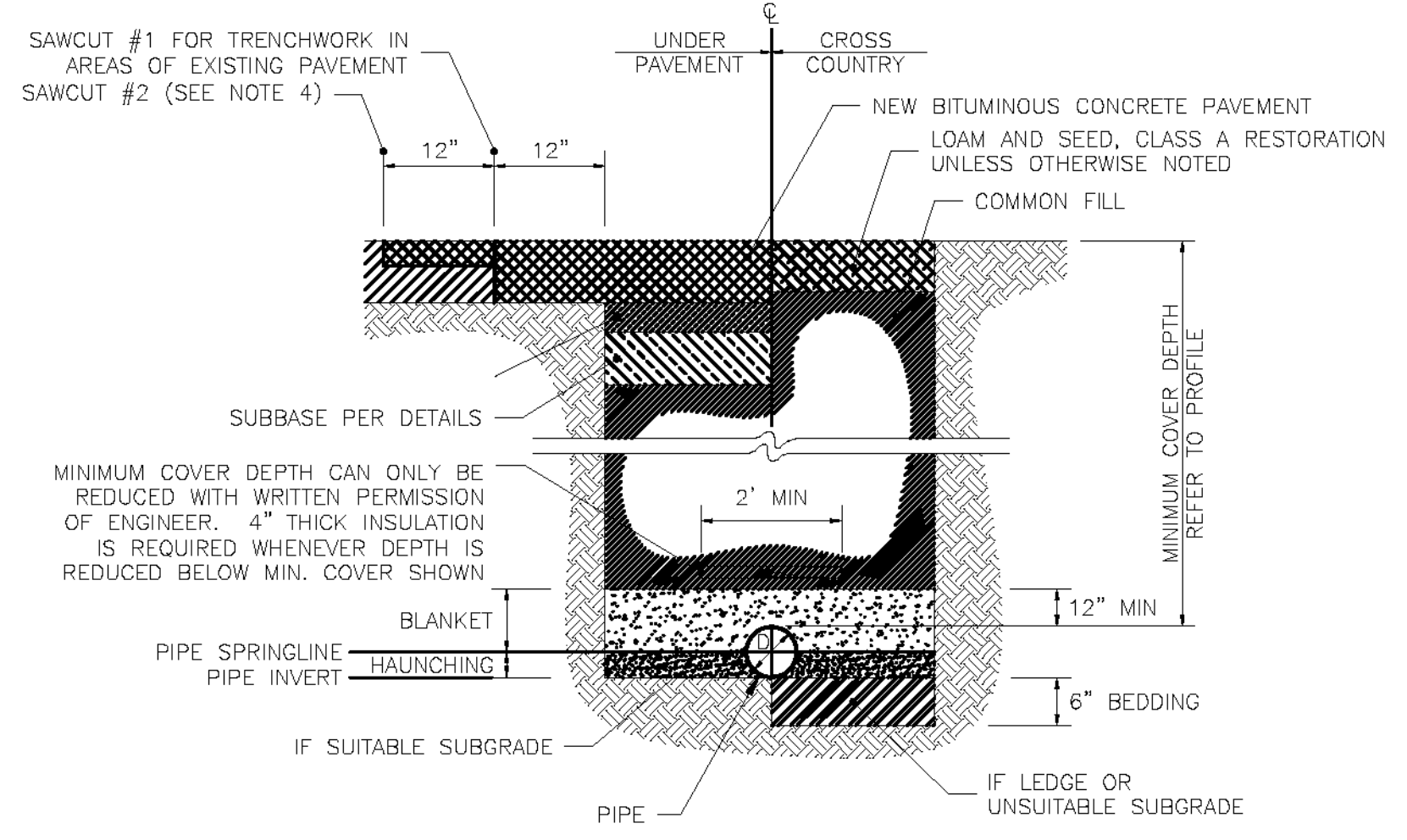


**HYDRANT ASSEMBLY DETAIL**  
NOT TO SCALE



**TEMPORARY FLUSHING CONNECTION**  
SCALE: NOT TO SCALE

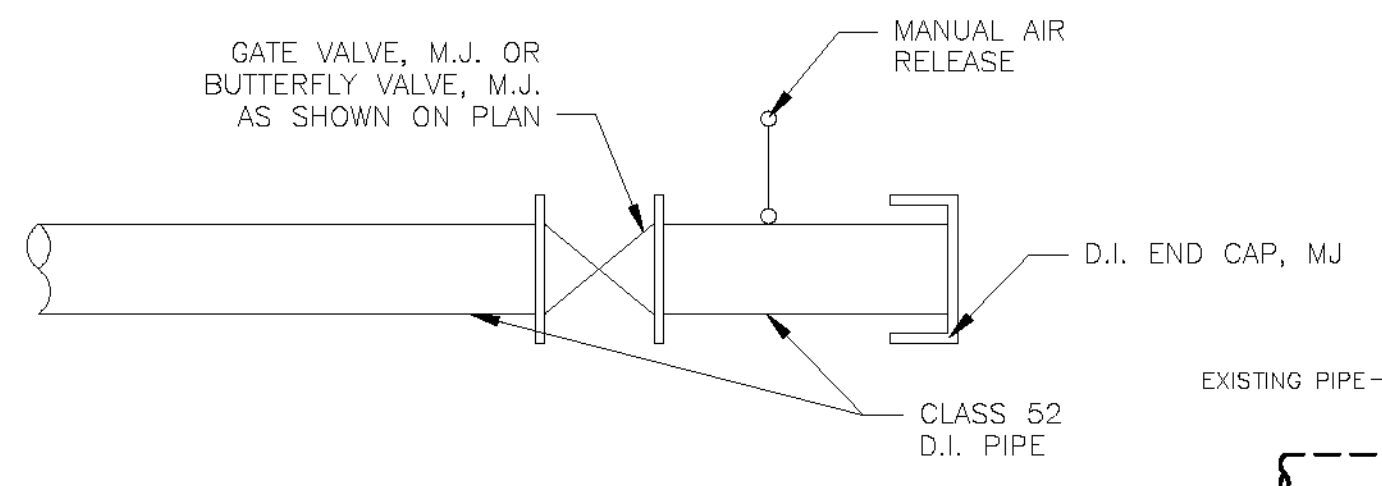
- NOTES:**
1. MINIMUM FLUSHING VELOCITY IS 3 FEET PER SECOND.
  2. CONTRACTOR TO INSURE ALL FLUSHING WATER IS CONTROLLED IN ACCORDANCE WITH CONSTRUCTION GENERAL PERMIT AND DECHLORINATED PRIOR TO DISCHARGE.
  3. CONTRACTOR TO SWAB CHLORINATE FITTINGS AND CONNECTORS NOT INCLUDED IN INITIAL DISINFECTION PROCEDURE IF CONNECTING TO AN EXISTING WATER MAIN.



- BEDDING** - EXCAVATE BELOW PIPE AND REFILL ONLY WHEN SPECIFICALLY ORDERED. MATERIALS AND COMPACTION AS SPECIFIED.
- HAUNCHING** - FROM INVERT OF PIPE TO SPRINGLINE OF PIPE. HAND PLACE AND HAND TAMP TO REMOVE ALL VOIDS FROM UNDER PIPE. MATERIAL AND COMPACTION AS SPECIFIED.
- BLANKET** - FROM SPRINGLINE TO 12" MIN. ABOVE PIPE. MATERIAL AND COMPACTION AS SPECIFIED.

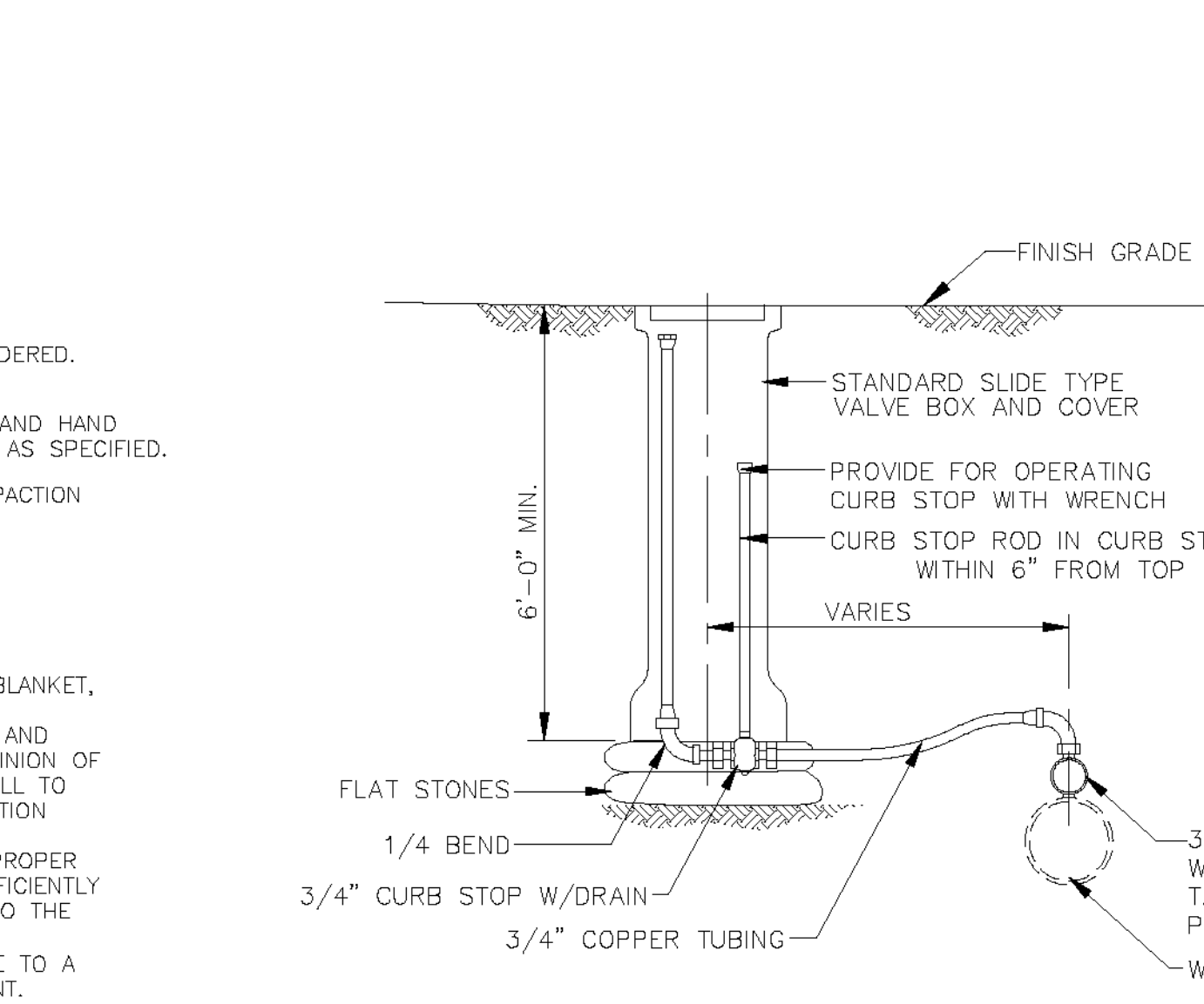
**WATER MAIN TYPICAL TRENCH DETAIL**  
NOT TO SCALE

- NOTES:**
1. REFER TO THE SPECIFICATIONS FOR COMPACTION, PAY LIMITS, AND SPECIALTY MATERIALS FOR BLANKET, BEDDING, AND GRAVELS.
  2. NORMALLY, EXCAVATED MATERIAL FROM THE TRENCH CAN BE USED AS COMMON FILL BACKFILL AND COMPACTION AS NECESSARY TO ACHIEVE COMPLIANCE WITH THE SPECIFICATIONS. IF IN THE OPINION OF THE ENGINEER, THE EXCAVATED MATERIAL WHEN REMOVED IS TOO WET TO BE USED AS BACKFILL TO ACHIEVE THE MINIMUM SPECIFIED COMPACTION, MATERIAL MEETING THE COMMON FILL SPECIFICATION WILL BE FURNISHED AND INSTALLED AT THE UNIT PRICE PROVIDED.
  3. IF THE EXCAVATED MATERIAL BECOMES TOO WET DUE TO WEATHER CONDITIONS OR DUE TO IMPROPER HANDLING PROCEDURES AND CANNOT BE REUSED FOR BACKFILL, THE MATERIAL SHALL BE SUFFICIENTLY DRIED OR MIXED WITH DRY MATERIAL TO OBTAIN PROPER MOISTURE CONTENT AT NO CHARGE TO THE OWNER.
  4. SAWCUT #2 FOR PERMANENT TRENCH PAVEMENT: CUT EXISTING PAVEMENT IN A STRAIGHT LINE TO A DEPTH EQUAL TO NEW WEARING COURSE THICKNESS AND REMOVE EXISTING PAVEMENT. CLEAN SURFACES AND TACK COAT ALL EDGES OF EXISTING PAVEMENT.
  5. TRENCH WIDTH SHALL BE SUFFICIENT TO ALLOW PIPE TO BE LAID AND JOINED PROPERLY AND FOR PLACEMENT AND COMPACTION OF BEDDING. TRENCH SUPPORT SHALL BE ADEQUATE TO PERMIT SAFE ACCESS BY INSPECTOR FOR COMPACTION SAMPLES.
  6. WHERE PIPE IS INSTALLED IN GRAVEL SHOULDER OR IN GRAVELED ROAD, GRAVEL SUBBASE MATERIAL AND COMPACTION SHALL BE AS SPECIFIED.

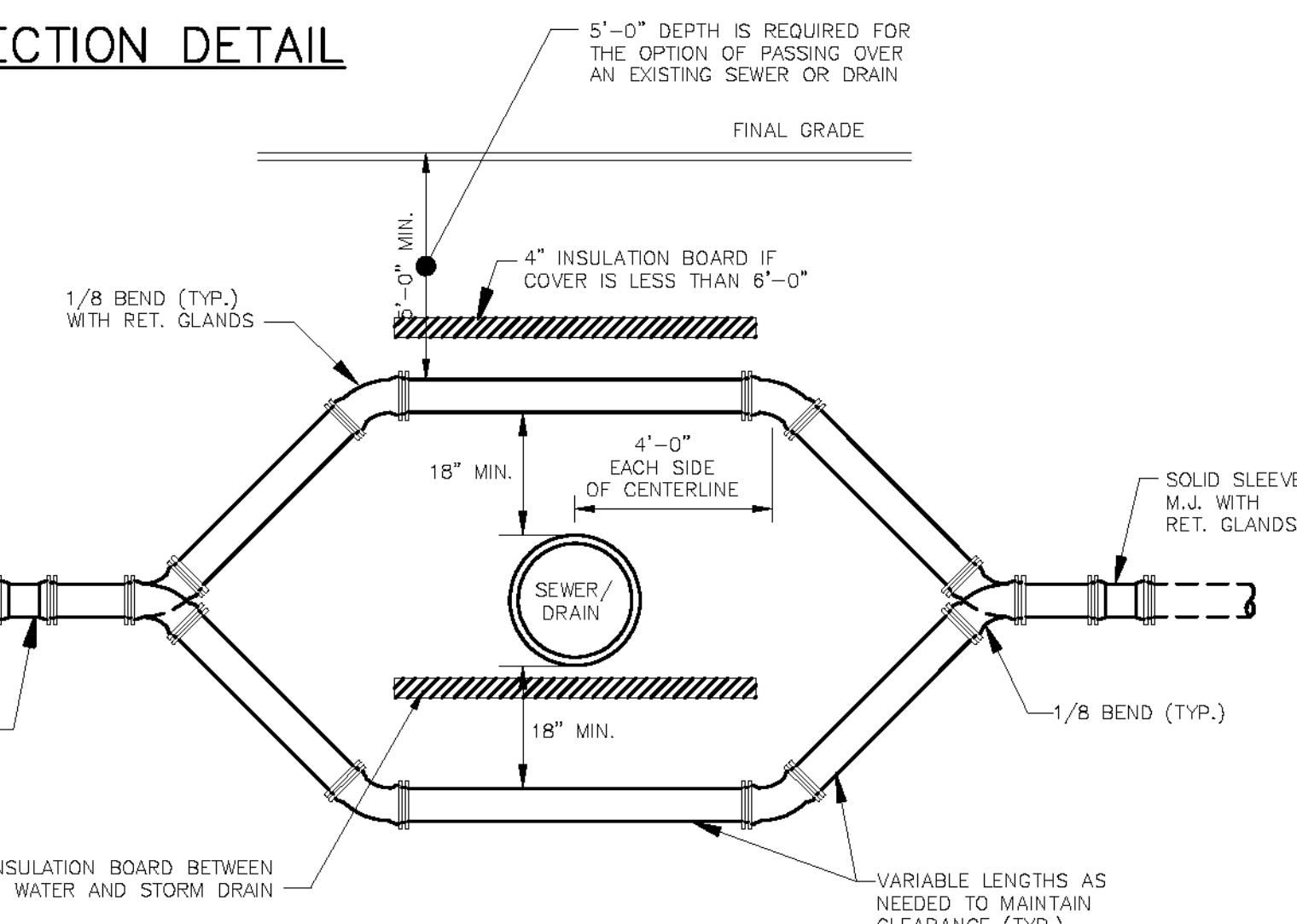


- NOTES:**
1. SEE PLANS FOR LINE SIZES AND VALVE LOCATIONS.
  2. ADDITIONAL BENDS OR FITTINGS MAY BE REQUIRED, SEE PLAN SHEETS.
  3. SEE MANUAL/CHLORINE DETAIL. THIS SHEET

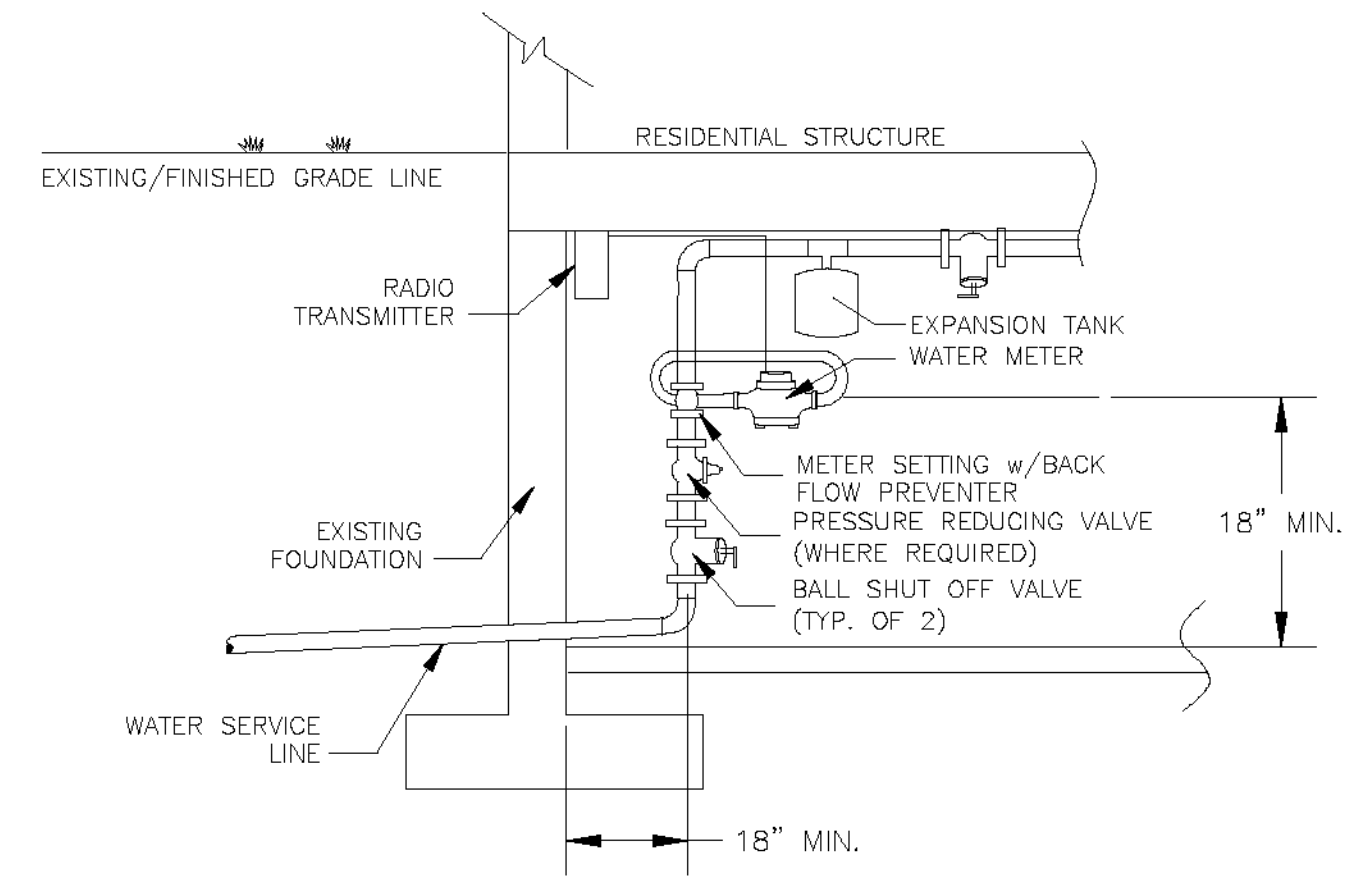
**FUTURE CONNECTION DETAIL**  
NOT TO SCALE



**TYPICAL INSTALLATION-TRAVEL WAY FOR MANUAL AIR RELEASE OR CHLORINATION INJECTION**  
NOT TO SCALE



**SECTION-WATER MAIN RELOCATION DETAIL**  
NOT TO SCALE



**WATER METER DETAIL**  
NOT TO SCALE

**WATER SERVICE AND METER SIZES**

BUILDING NO.	SERVICE SIZE	METER SIZE
14-22	1"	3/4"
48-54	3/4"	5/8"
71-77	3/4"	5/8"
81-83	3/4"	5/8"
103-119	1 1/2"	1"
122-126	1"	3/4"
135	3/4"	5/8"
143-151	2"	1"
158-166	3/4"	5/8"
188	3/4"	5/8"
170-174	1"	3/4"
180-186	1"	3/4"
185-189	1 1/2"	1"
188-194	1 1/2"	1"
199-205	3/4"	5/8"
200	3/4"	5/8"
210	1"	3/4"
213-219	3/4"	5/8"
214	3/4"	5/8"
224-230	1"	3/4"
237-241	3/4"	5/8"
240	1"	3/4"
248	1"	3/4"
260-266	1"	3/4"
289-291	3/4"	5/8"
293-297	1"	3/4"
301-309	1"	3/4"
302-310	3/4"	5/8"
315	3/4"	5/8"
316	3/4"	5/8"
320	1"	3/4"
322	1 1/2"	1"
328-332	1 1/2"	1"
338-342	1 1/2"	1"
350	1"	3/4"
362	2"	1"
372-378	3/4"	5/8"



**PROJECT NAME:** BARRE CITY  
**PROJECT NUMBER:** FECC F 026-1(34) C/2  
**FILE NAME:** 717014-DETAILS  
**PROJECT LEADER:** R.E. DUFRESNE  
**DESIGNED BY:** B.L. BAKER  
**WATER DETAILS**

**PLOT DATE:** Mar. 22, 11  
**DRAWN BY:** B.L. BAKER  
**CHECKED BY:** C.L. WHITEHEAD  
**SHEET 154 OF 339**