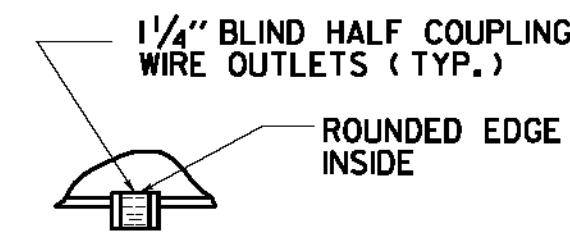
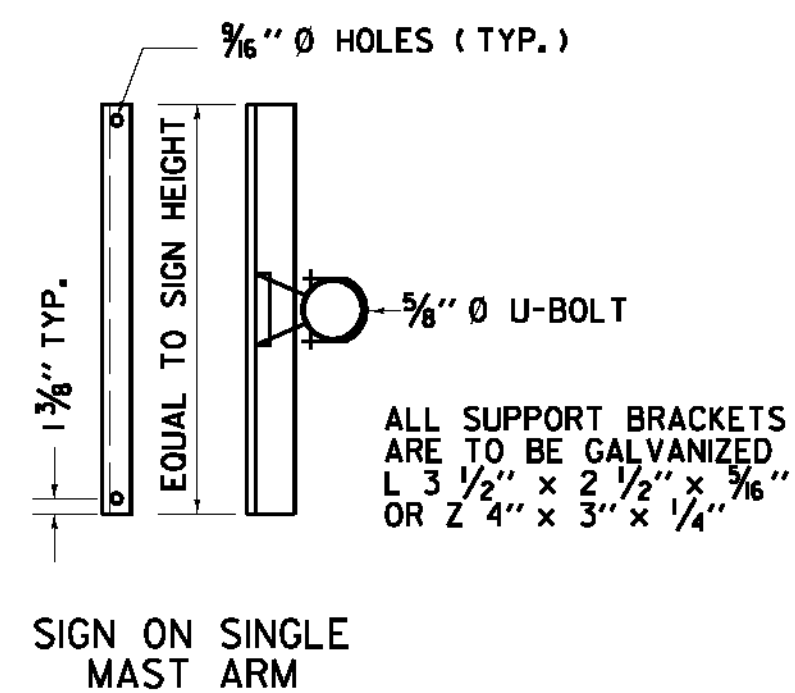


TRUSS-TYPE SPANS SHALL BE PROHIBITED

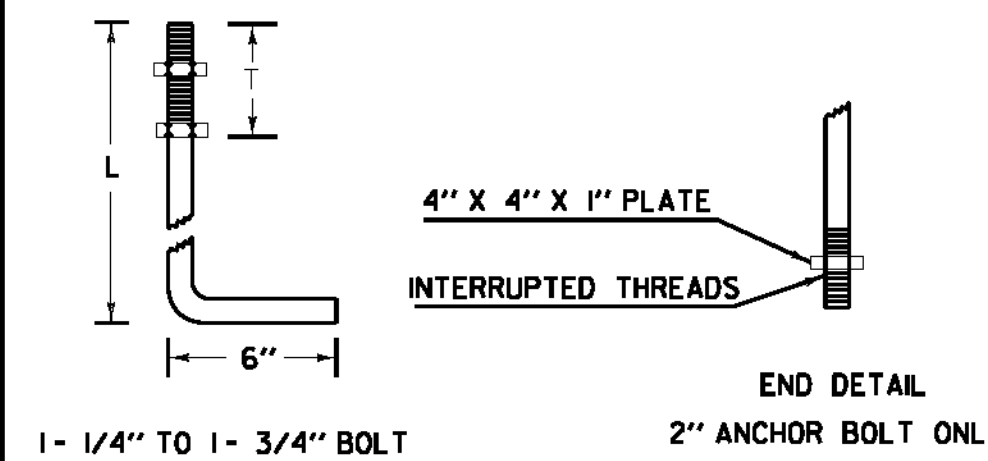


DETAIL A

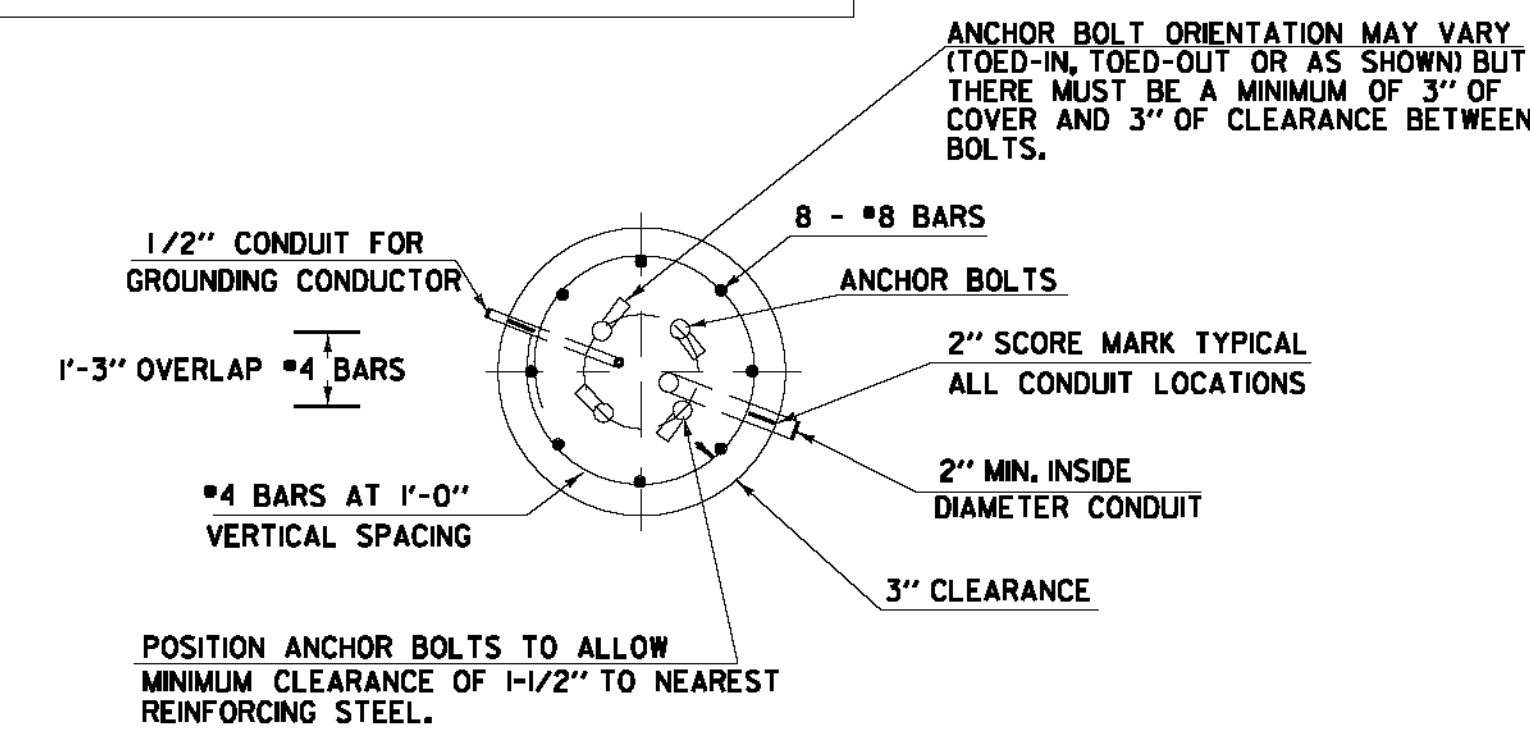


SIGN BRACKET DETAILS

ANCHOR BOLT DETAIL			
SIZE	L (IN)	T (IN)	
1- 1/4" X 48"	42	8	
1- 1/2" X 60"	54	9	
1- 3/4" X 90"	84	9	
2" X 96"	96	9	



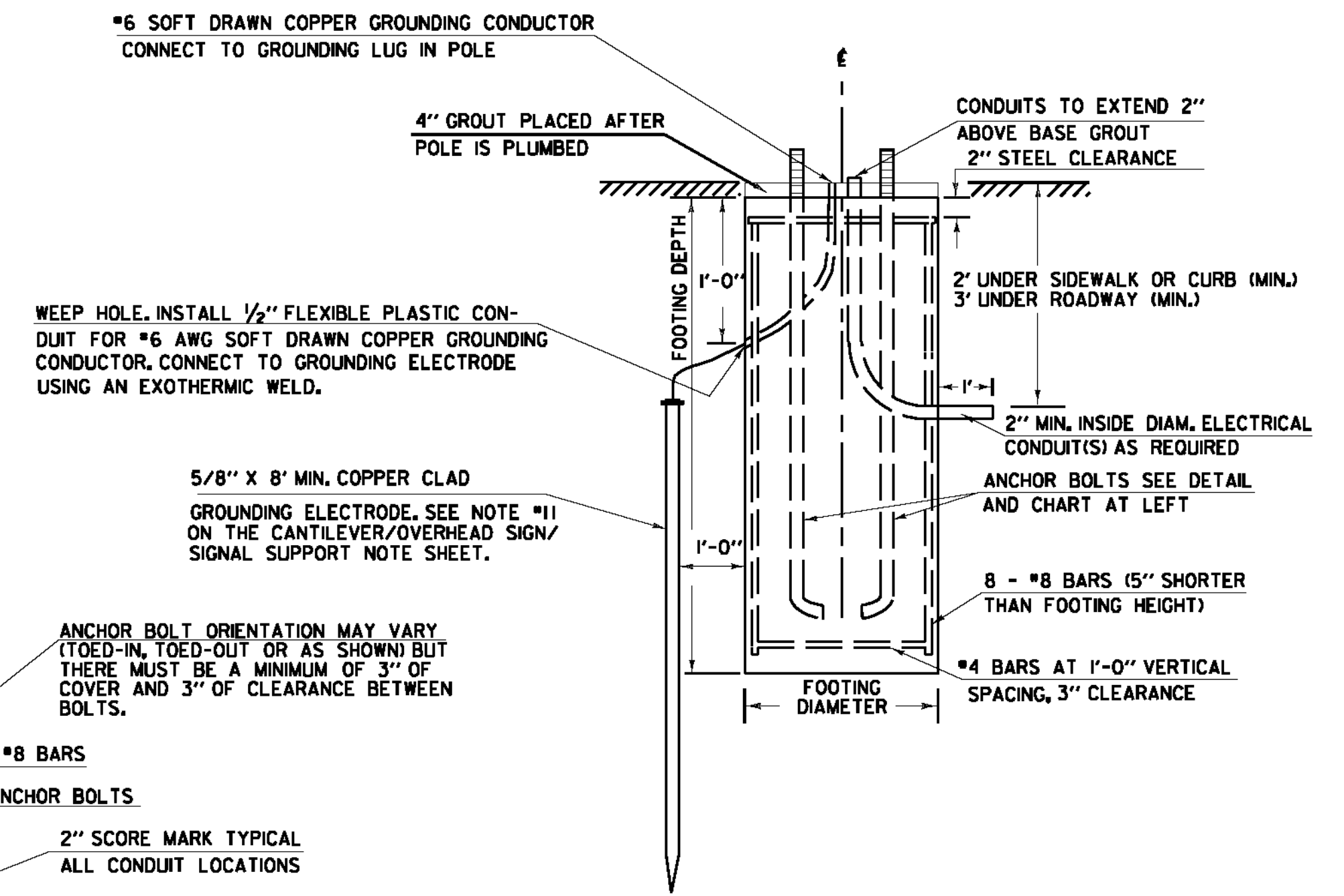
ANCHOR BOLT DETAIL



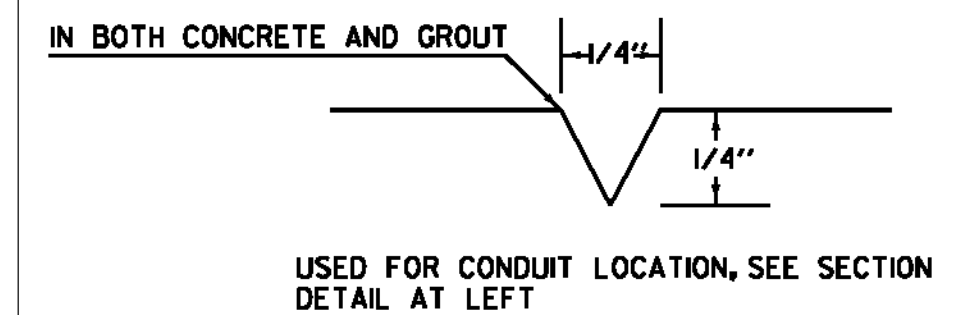
SECTION

OVERHEAD TRAFFIC SIGN BRIDGE FOOTING DETAIL

(SPREAD FOOTINGS SHALL NOT BE PERMITTED)



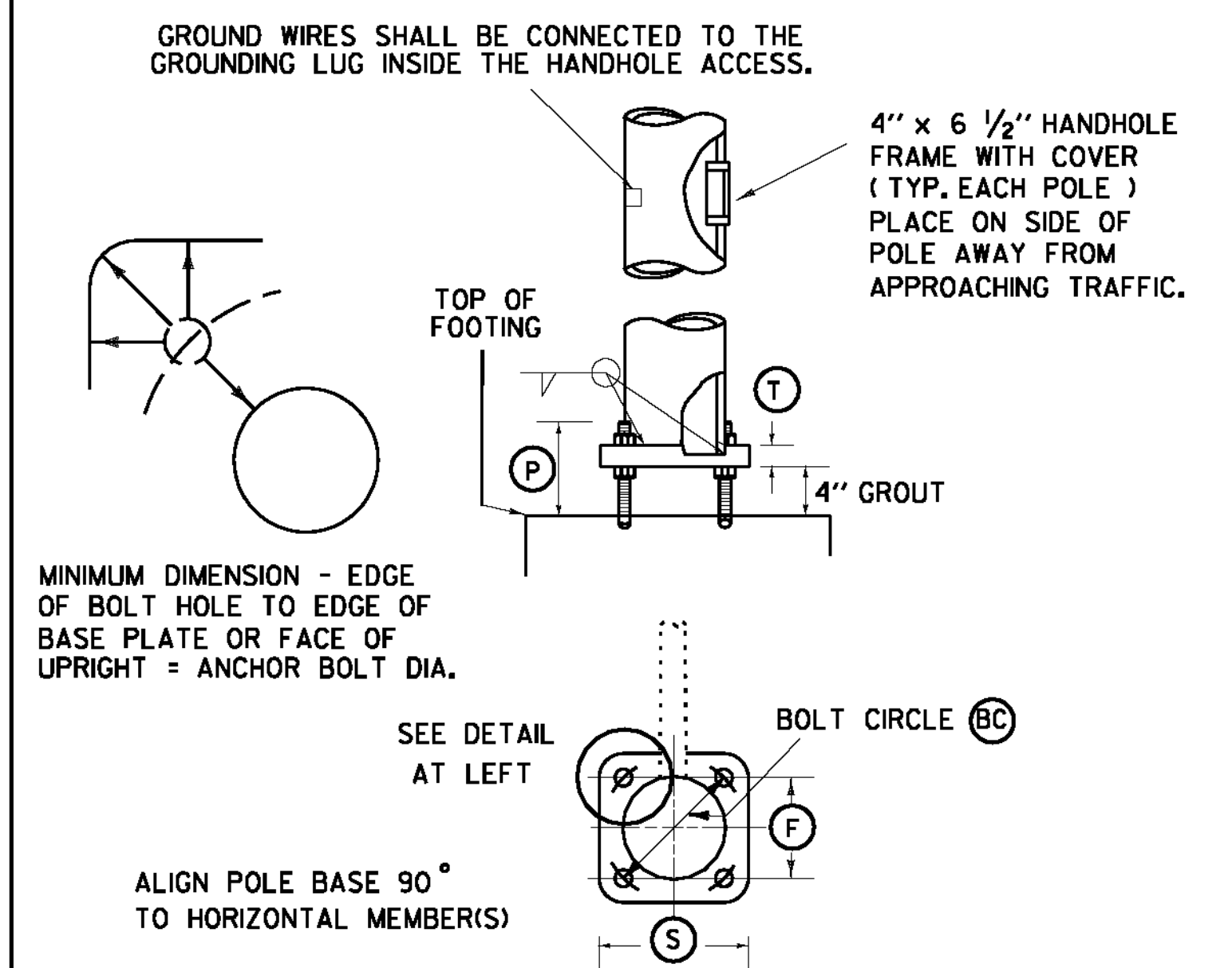
ELEVATION



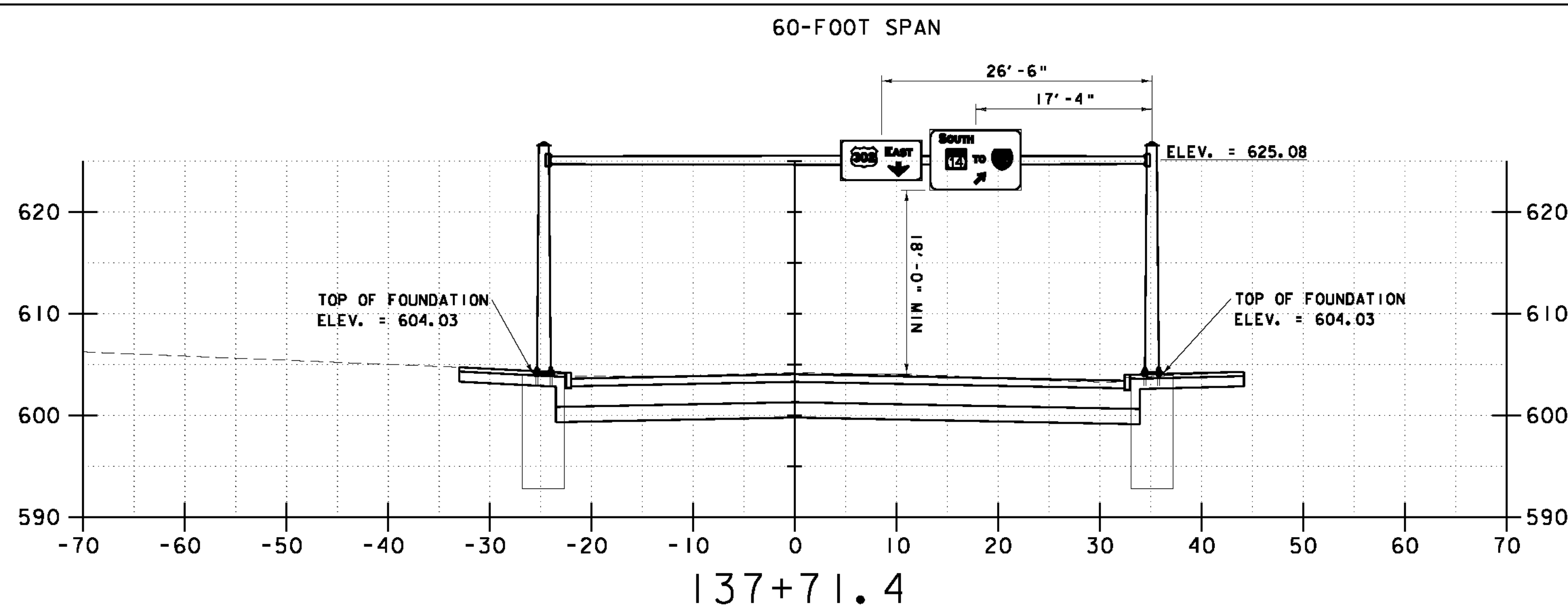
2" SCORE MARK DETAIL

NOTES:

- SEE OVERHEAD SIGN SUPPORT NOTES SHEET (SHEET 95) FOR ADDITIONAL INFORMATION.
- MANUFACTURER TO DESIGN FOUNDATION IN ACCORDANCE WITH VTRANS MREI 10-01. ALL FOUNDATIONS SHALL BE CYLINDRICAL; SPREAD FOOTINGS SHALL NOT BE PERMITTED.
- SPANS SHALL BE MONOTUBE DESIGN.
- MINIMUM CLEARANCE FROM SIGNS TO ROADWAY IS 18'.
- SEE BORING LOGS FOR GEOTECHNICAL INFORMATION FOR POLE FOUNDATIONS (SHEETS 45-55)
- ALL SIGN STRUCTURES SHALL BE PAINTED BLACK PER THE SPECIAL PROVISIONS AND THE OVERHEAD SIGN SUPPORT NOTES SHEET (SHEET 95).



POLE BASE AND BASE PLATE DETAIL



OVERHEAD SIGN BRIDGE CROSS SECTION

NOTE:
DETAILS
NTS

OVERHEAD TRAFFIC SIGN BRIDGE / FOOTING DETAIL SHEET

z85b010_SIGN_C2

PREPARED BY JAR DATE 3/21/2011
CHECKED BY MDS DATE 3/21/2011
DESIGN SUPERVISOR DATE
PROJ. BARRE CITY
FEGC F 026-1(34) C/2
TRAFFIC SHEET NO. OF
SHEET 131 OF 339 SHEETS

LAST REVISED 8/15/95