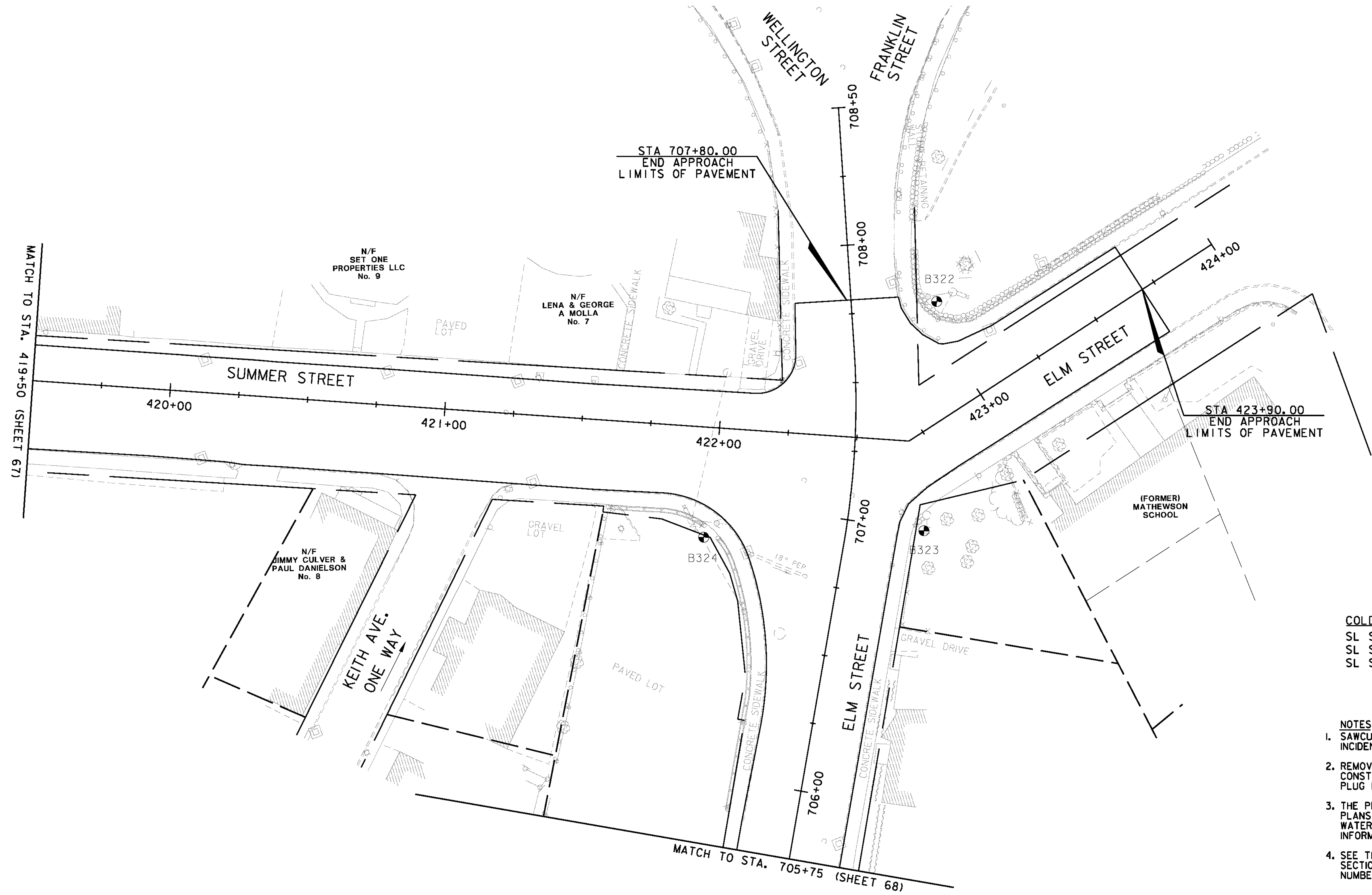
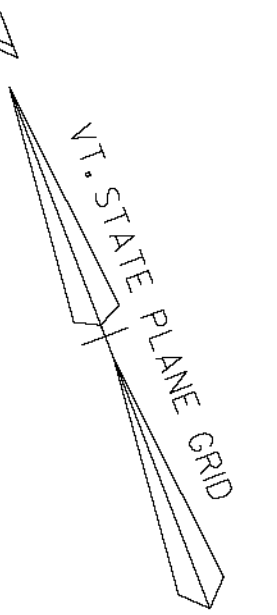



■	PROPOSED GRANITE POST AND CHAIN FENCE	○	PROPOSED PARKING METER POST
*	PROPOSED ORNAMENTAL STREET LIGHT	⊗	PROPOSED TREE LOCATION
⊙	PROPOSED SIGNAL POLE WITH LUMINAIRE	⊠	4' x 5' PROPOSED TREE PIT
⊕	BORING/AUGER LOCATIONS	⊖	PROPOSED FIRE HYDRANT



**COLD PLANING, BITUMINOUS PAVEMENT**  
 SL STA 419+50 - 423+90  
 SL STA 422+07 - 422+16 LT  
 SL STA 705+75 - 707+80

- NOTES:**
- SAWCUT OF EXISTING PAVEMENT & SIDEWALK SHALL BE INCIDENTAL TO ALL EXCAVATION PAY ITEMS.
  - REMOVE ABANDONED GAS LINES TO LIMITS OF FULL DEPTH CONSTRUCTION (INCIDENTAL TO ALL EXCAVATION PAY ITEMS). PLUG EXISTING LINES AT LIMITS OF CONSTRUCTION.
  - THE PROPOSED SEWER AND WATER UTILITIES SHOWN ON THESE GENERAL PLANS ARE FOR INFORMATIONAL PURPOSES. REFER TO THE SEWER AND WATER PLANS BY DUFRESNE GROUP FOR ACTUAL CONSTRUCTION INFORMATION.
  - SEE THE ITEM DETAIL & DRAINAGE SHEETS, DRAINAGE PROFILES, AND CROSS SECTIONS FOR PROPOSED DRAINAGE INFORMATION CORRESPONDING TO NOTE NUMBERS SHOWN BY: 
  - ALL EXISTING TELEPHONE & ELECTRIC MANHOLES SHALL BE ADJUSTED BY OTHERS.



**VHB** Vanasse Hangen Brustlin, Inc.

PROJECT NAME: BARRE CITY	PLOT DATE: 3/9/2011
PROJECT NUMBER: FEGC F 026-1(34) C/2	DRAWN BY: D. PECK
FILE NAME: z85b010bdr_cp_C2	CHECKED BY:
PROJECT LEADER: G. BAKOS	GENERAL PLAN #9
DESIGNED BY: D. PECK	SHEET 64 OF 339