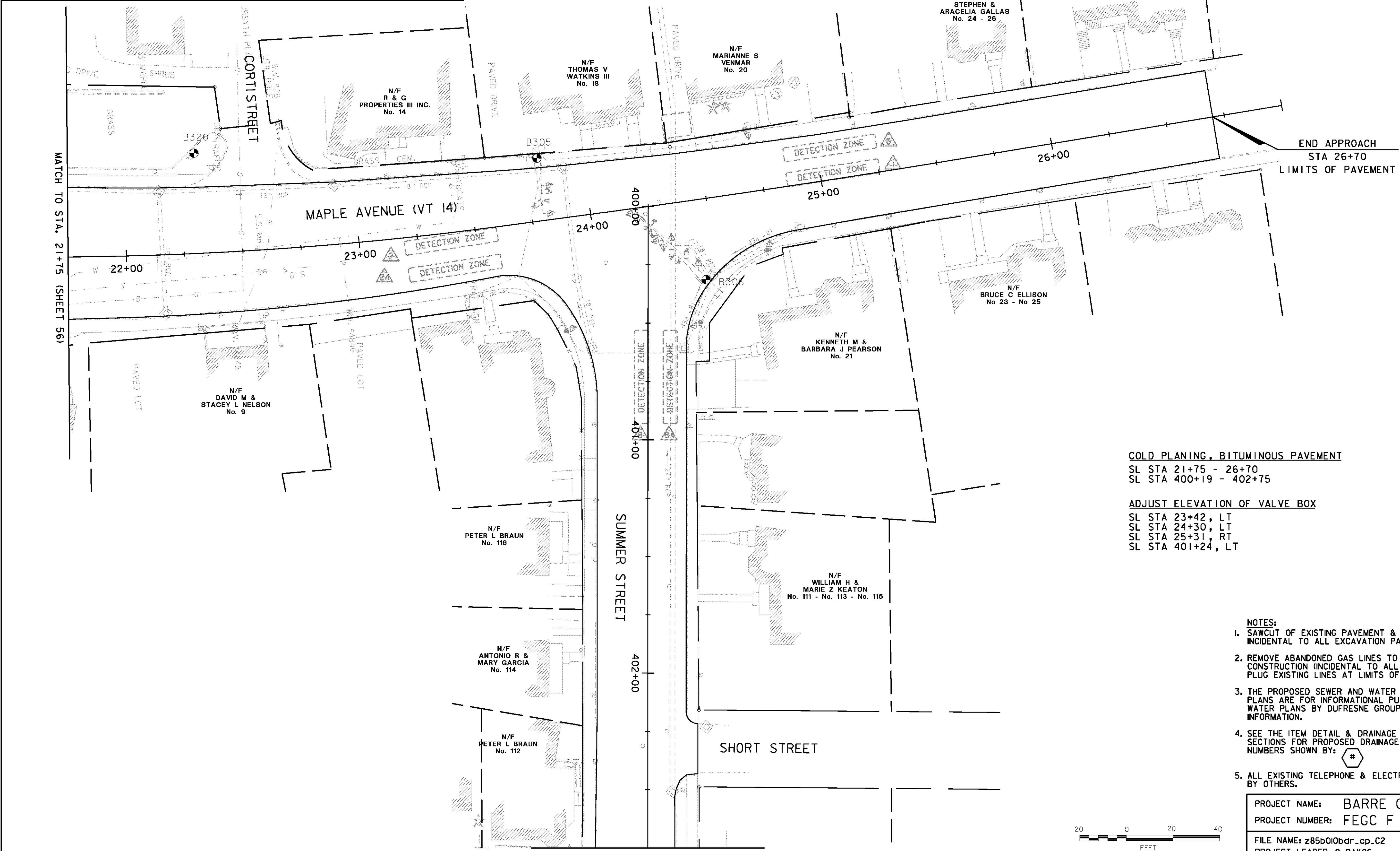
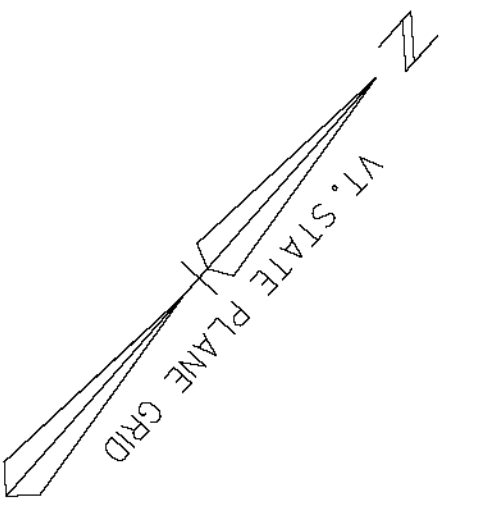


- PROPOSED GRANITE POST AND CHAIN FENCE
- \* PROPOSED ORNAMENTAL STREET LIGHT
- PROPOSED SIGNAL POLE WITH LUMINAIRE
- ⊕ BORING/AUGER LOCATIONS
- PROPOSED TRASH RECEPTACLE
- ⊙ PROPOSED PARKING METER POST
- ⊗ PROPOSED TREE LOCATION
- ⊠ 4' x 5' PROPOSED TREE PIT
- ⊕ PROPOSED FIRE HYDRANT

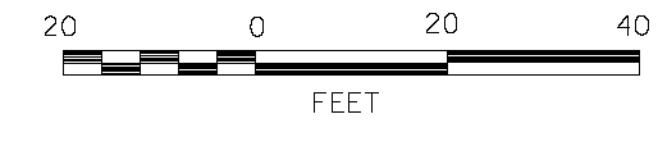


**COLD PLANING, BITUMINOUS PAVEMENT**  
 SL STA 21+75 - 26+70  
 SL STA 400+19 - 402+75

**ADJUST ELEVATION OF VALVE BOX**  
 SL STA 23+42, LT  
 SL STA 24+30, LT  
 SL STA 25+31, RT  
 SL STA 401+24, LT

- NOTES:**
1. SAWCUT OF EXISTING PAVEMENT & SIDEWALK SHALL BE INCIDENTAL TO ALL EXCAVATION PAY ITEMS.
  2. REMOVE ABANDONED GAS LINES TO LIMITS OF FULL DEPTH CONSTRUCTION (INCIDENTAL TO ALL EXCAVATION PAY ITEMS). PLUG EXISTING LINES AT LIMITS OF CONSTRUCTION.
  3. THE PROPOSED SEWER AND WATER UTILITIES SHOWN ON THESE GENERAL PLANS ARE FOR INFORMATIONAL PURPOSES. REFER TO THE SEWER AND WATER PLANS BY DUFRESNE GROUP FOR ACTUAL CONSTRUCTION INFORMATION.
  4. SEE THE ITEM DETAIL & DRAINAGE SHEETS, DRAINAGE PROFILES, AND CROSS SECTIONS FOR PROPOSED DRAINAGE INFORMATION CORRESPONDING TO NOTE NUMBERS SHOWN BY:
  5. ALL EXISTING TELEPHONE & ELECTRIC MANHOLES SHALL BE ADJUSTED BY OTHERS.

PROJECT NAME: BARRE CITY	
PROJECT NUMBER: FECC F 026-(134) C/2	
FILE NAME: z85b010bdr_cp_C2	PLOT DATE: 3/9/2011
PROJECT LEADER: G. BAKOS	DRAWN BY: D. PECK
DESIGNED BY: D. PECK	CHECKED BY:
GENERAL PLAN #7	SHEET 62 OF 339



**VHB** Vanasse Hangen Brustlin, Inc.

MATCH TO STA. 21+75 (SHEET 56)

MATCH TO STA. 402+75 (SHEET 65)

END APPROACH  
 STA 26+70  
 LIMITS OF PAVEMENT