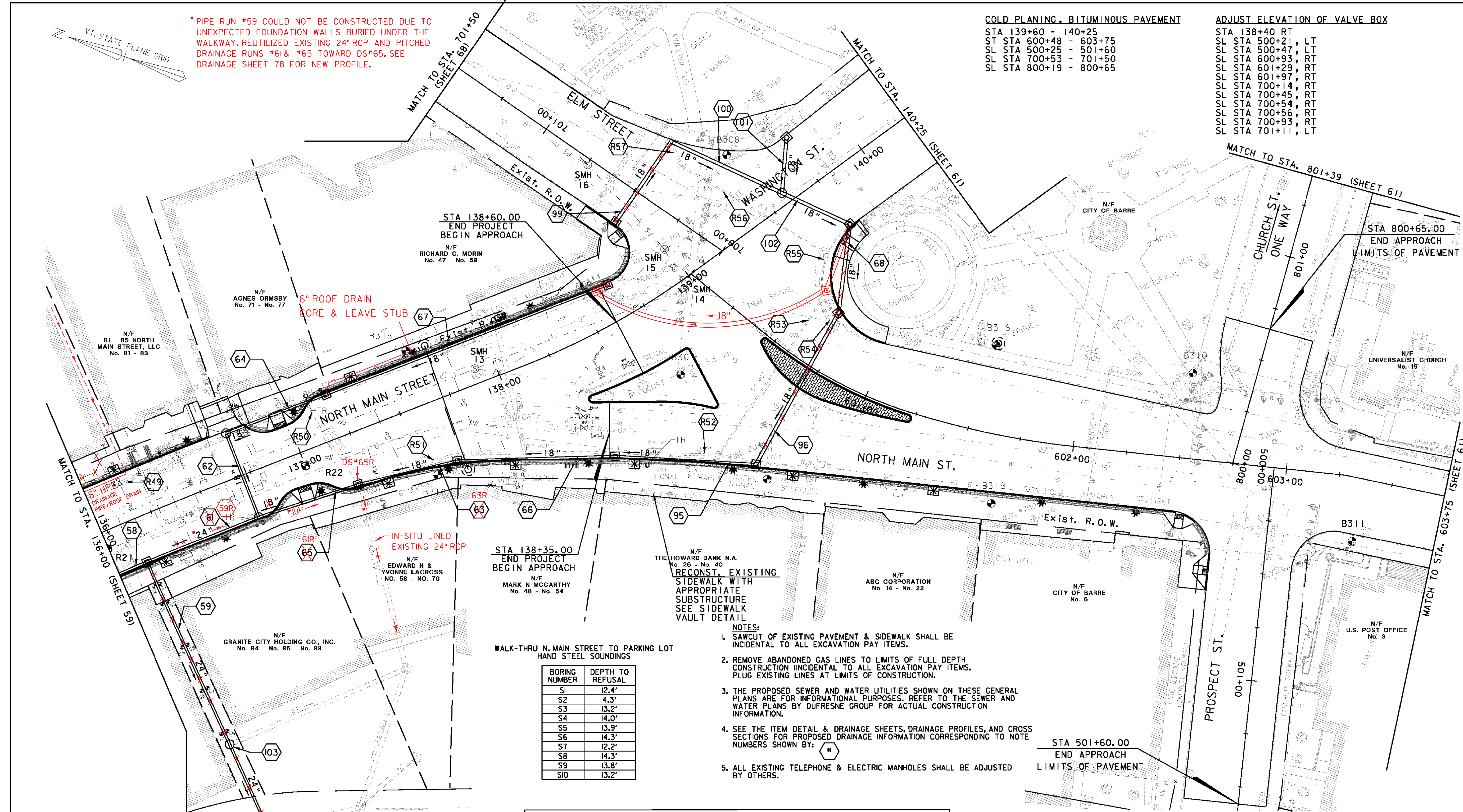


*PIPE RUN #59 COULD NOT BE CONSTRUCTED DUE TO UNEXPECTED FOUNDATION WALLS BURIED UNDER THE WALKWAY. REUTILIZED EXISTING 24" RCP AND PITCHED DRAINAGE RUNS #61 & #65 TOWARD DS#65. SEE DRAINAGE SHEET 78 FOR NEW PROFILE.

COLD PLANING, BITUMINOUS PAVEMENT
 STA 139+60 - 140+25
 ST STA 600+48 - 603+75
 SL STA 500+25 - 501+60
 SL STA 700+53 - 701+50
 SL STA 800+19 - 800+65

ADJUST ELEVATION OF VALVE BOX
 STA 138+40 RT
 SL STA 500+21, LT
 SL STA 500+47, LT
 SL STA 600+93, RT
 SL STA 601+29, RT
 SL STA 601+97, RT
 SL STA 700+14, RT
 SL STA 700+45, RT
 SL STA 700+54, RT
 SL STA 700+56, RT
 SL STA 700+93, RT
 SL STA 701+11, LT



STA 138+60.00
 END PROJECT
 BEGIN APPROACH
 N/F RICHARD G. MORIN
 No. 47 - No. 59

N/F AGNES ORMSBY
 No. 71 - No. 77

N/F 81 - 85 NORTH
 MAIN STREET, LLC
 No. 81 - 83

N/F GRANITE CITY HOLDING CO., INC.
 No. 84 - No. 85 - No. 88

N/F EDWARD H &
 YVONNE LACROSS
 No. 58 - NO. 70

STA 139+35.00
 END PROJECT
 BEGIN APPROACH
 N/F MARK N. MCCARTHY
 No. 48 - No. 54

N/F THE HOWARD BANK N.A.
 No. 26 - No. 40
**RECONSTR. EXISTING
 SIDEWALK WITH
 APPROPRIATE
 SUBSTRUCTURE
 SEE SIDEWALK
 VAULT DETAIL**

N/F ARG CORPORATION
 No. 14 - No. 22

N/F CITY OF BARRE
 No. 6

N/F U.S. POST OFFICE
 No. 3

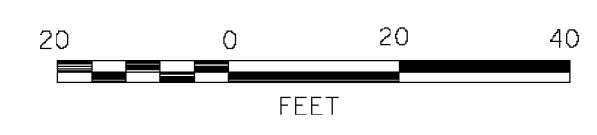
WALK-THRU N. MAIN STREET TO PARKING LOT
 HAND STEEL SOUNDINGS

BORING NUMBER	DEPTH TO REFUSAL
S1	12.4'
S2	4.3'
S3	13.2'
S4	14.0'
S5	13.9'
S6	14.3'
S7	12.2'
S8	14.3'
S9	13.8'
S10	13.2'

- NOTES:**
1. SAWCUT OF EXISTING PAVEMENT & SIDEWALK SHALL BE INCIDENTAL TO ALL EXCAVATION PAY ITEMS.
 2. REMOVE ABANDONED GAS LINES TO LIMITS OF FULL DEPTH CONSTRUCTION (INCIDENTAL TO ALL EXCAVATION PAY ITEMS. PLUG EXISTING LINES AT LIMITS OF CONSTRUCTION.
 3. THE PROPOSED SEWER AND WATER UTILITIES SHOWN ON THESE GENERAL PLANS ARE FOR INFORMATIONAL PURPOSES. REFER TO THE SEWER AND WATER PLANS BY DUFRESNE GROUP FOR ACTUAL CONSTRUCTION INFORMATION.
 4. SEE THE ITEM DETAIL & DRAINAGE SHEETS, DRAINAGE PROFILES, AND CROSS SECTIONS FOR PROPOSED DRAINAGE INFORMATION CORRESPONDING TO NOTE NUMBERS SHOWN BY: (6)
 5. ALL EXISTING TELEPHONE & ELECTRIC MANHOLES SHALL BE ADJUSTED BY OTHERS.

STA 501+60.00
 END APPROACH
 LIMITS OF PAVEMENT

- PROPOSED GRANITE POST AND CHAIN FENCE
- * PROPOSED ORNAMENTAL STREET LIGHT
- PROPOSED SIGNAL POLE WITH LUMINAIRE
- ⊕ BORING/AUGER LOCATIONS
- PROPOSED TRASH RECEPTACLE
- ⊗ PROPOSED PARKING METER POST
- ⊠ PROPOSED TREE LOCATION
- ⊞ 4' x 5' PROPOSED TREE PIT
- ⊙ PROPOSED FIRE HYDRANT



VHB Vanasse Hangen Brustlin, Inc.

PROJECT NAME: BARRE CITY
 PROJECT NUMBER: FECC F 026-(K34) C/2
 FILE NAME: z85b010bdr_cp_C2
 PROJECT LEADER: G. BAKOS
 DESIGNED BY: D. PECK
 GENERAL PLAN #5

PLOT DATE: 3/9/2011
 DRAWN BY: D. PECK
 CHECKED BY:
 SHEET 60 OF 339