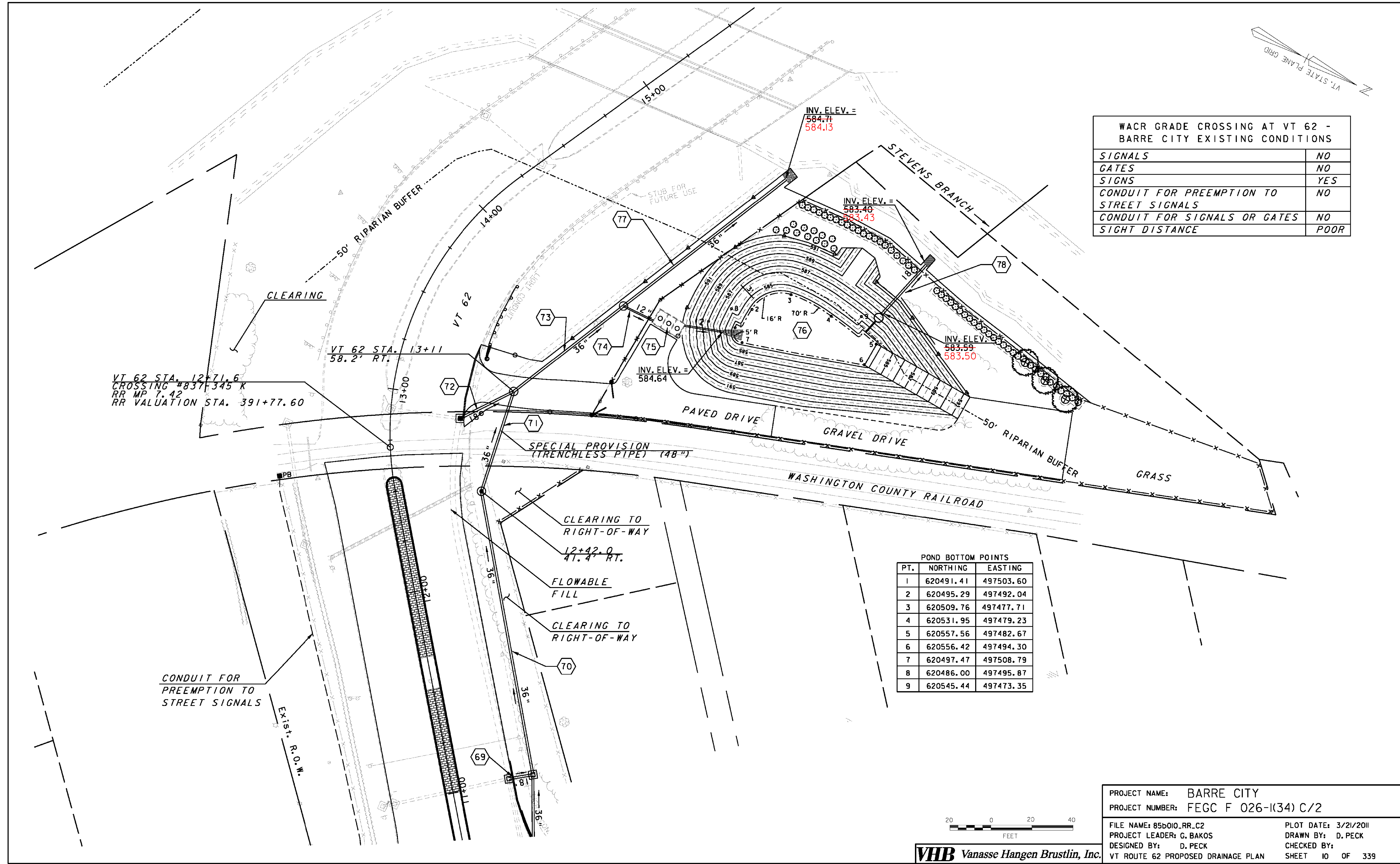


WACR GRADE CROSSING AT VT 62 - BARRE CITY EXISTING CONDITIONS	
SIGNALS	NO
GATES	NO
SIGNS	YES
CONDUIT FOR PREEMPTION TO STREET SIGNALS	NO
CONDUIT FOR SIGNALS OR GATES	NO
SIGHT DISTANCE	POOR



POND BOTTOM POINTS

PT.	NORTHING	EASTING
1	620491.41	497503.60
2	620495.29	497492.04
3	620509.76	497477.71
4	620531.95	497479.23
5	620557.56	497482.67
6	620556.42	497494.30
7	620497.47	497508.79
8	620486.00	497495.87
9	620545.44	497473.35



**VHB** Vanasse Hangen Brustlin, Inc.

PROJECT NAME: BARRE CITY	PLOT DATE: 3/21/2011
PROJECT NUMBER: FEGC F 026-1(34) C/2	DRAWN BY: D. PECK
FILE NAME: 85b010.RR.C2	CHECKED BY:
PROJECT LEADER: G. BAKOS	SHEET 10 OF 339
DESIGNED BY: D. PECK	
VT ROUTE 62 PROPOSED DRAINAGE PLAN	