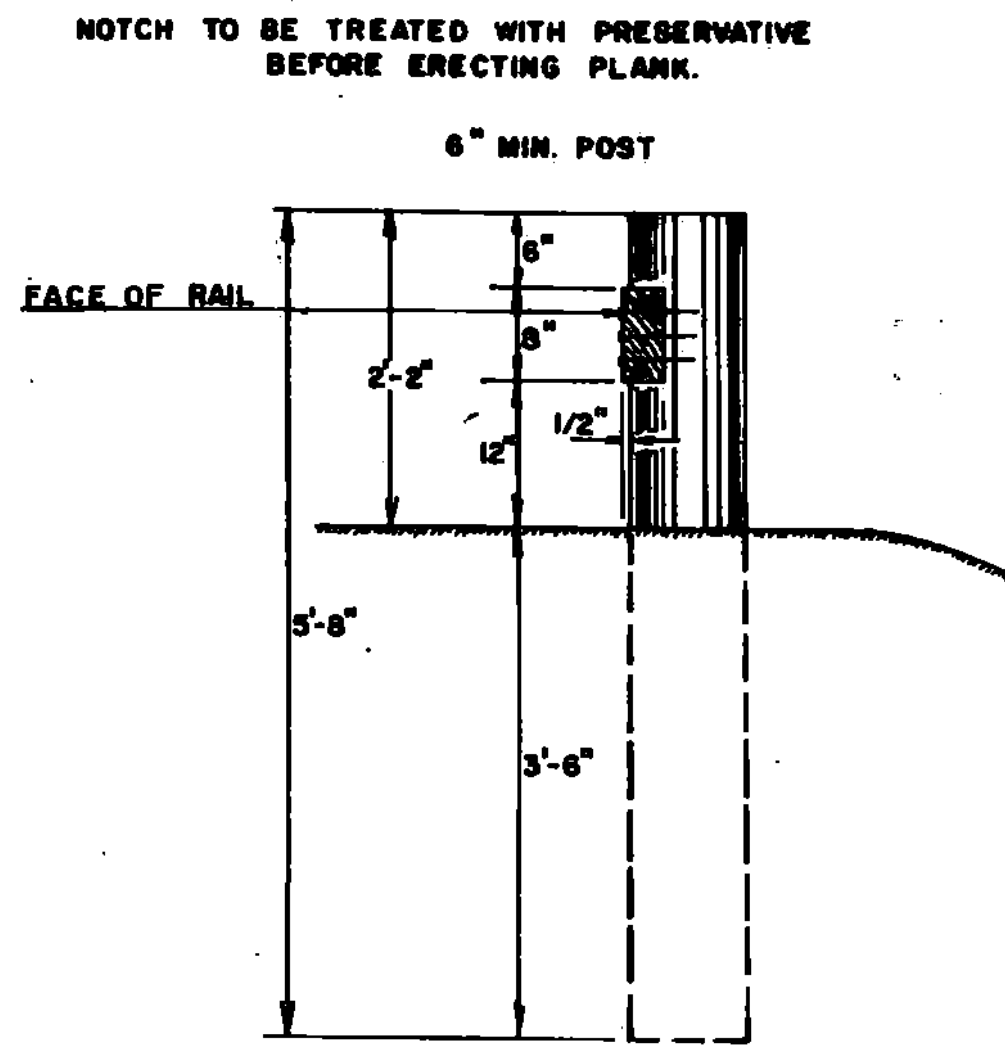


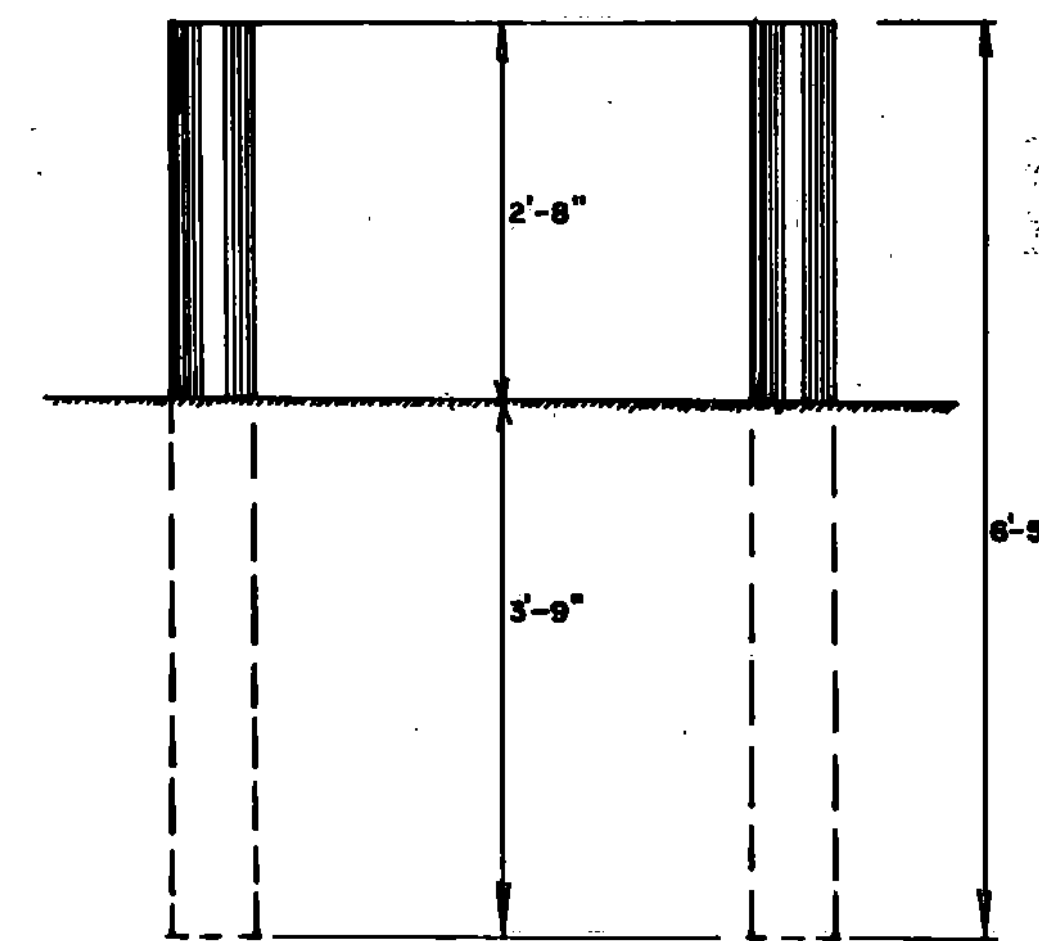
PLANK SIXTEEN FEET IN LENGTH TO BE USED WHEREVER POSSIBLE. POSTS SIX (6) INCHES SQUARE MAY BE USED IN PLACE OF ROUND POSTS. FIRST AND LAST POSTS OF EACH SECTION TO BE SET BACK TWELVE INCHES FROM THE GENERAL LINE OF POSTS, WHEN FOUR OR MORE POSTS ARE REQUIRED. REFLECTIVE MATERIAL TO BE PLACED AS DIRECTED BY THE ENGINEER. ALL WOOD MEMBERS SHALL BE GIVEN A PRESERVATIVE TREATMENT.

PLANK RAIL
TO BE USED AS A BARRICADE OFF THE HIGHWAY



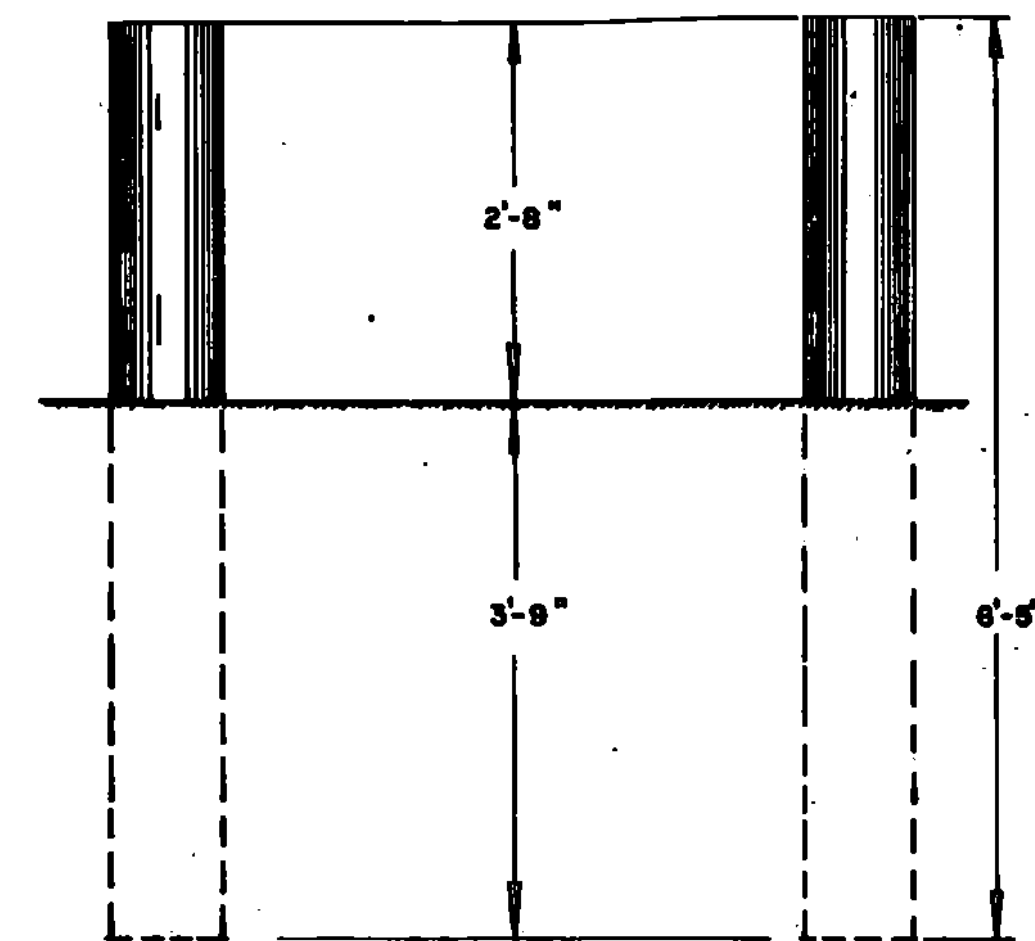
3" x 1 1/2" REFLECTIVE ALUMINUM STRIP TO BE PLACED ON EVERY OTHER WOOD POST IN A LINE OF POSTS AND CLEARLY VISIBLE TO APPROACHING TRAFFIC. STRIPS TO BE ATTACHED TO THE DESIGNATED RAIL POSTS ON BOTH SIDES OF THE ROAD AND VISIBLE TO TRAFFIC IN BOTH DIRECTIONS. REFLECTIVE MATERIAL SHALL MEET THE REQUIREMENTS OF SUBSECTION 750.09 AND SHALL BE OF ENCAPSULATED LENS SILVER OR AMBER.

DELINEATION OF WOOD RAIL AND GUIDE POSTS



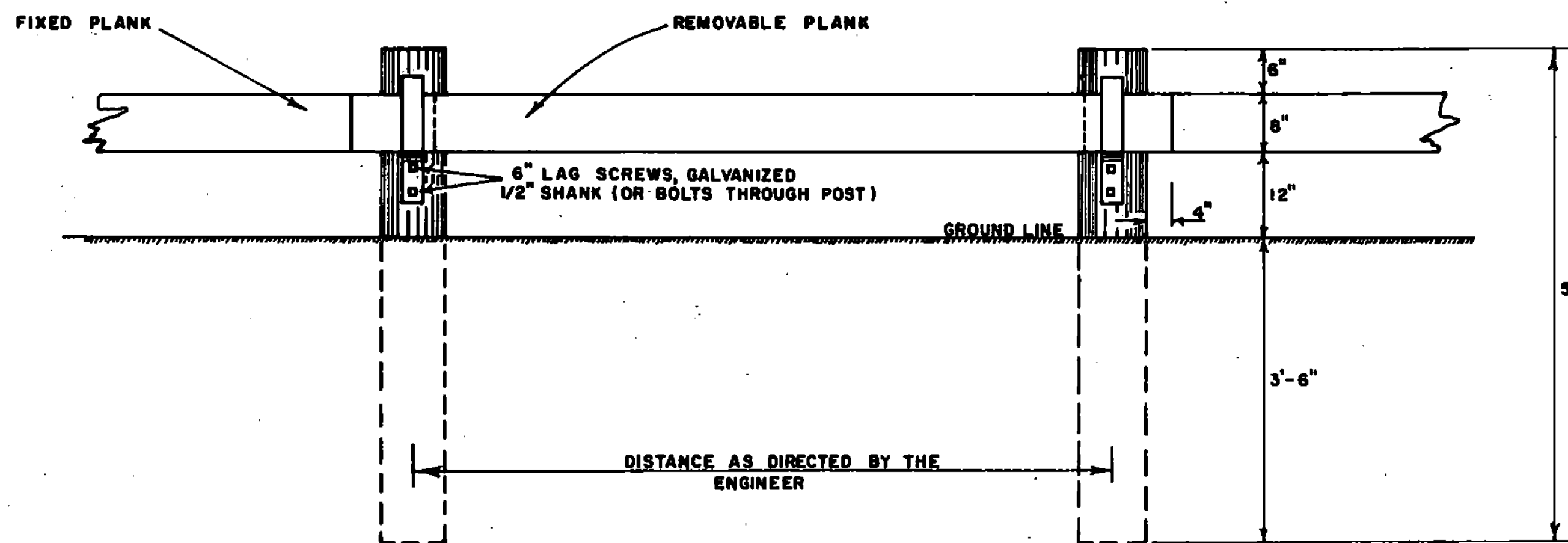
MARKER POSTS ARE TO BE 4" TO 5 1/2" IN DIAMETER AND ARE TO BE PLACED AS DIRECTED BY THE ENGINEER. POSTS SHALL BE GIVEN A PRESERVATIVE TREATMENT.

WOOD MARKER POSTS

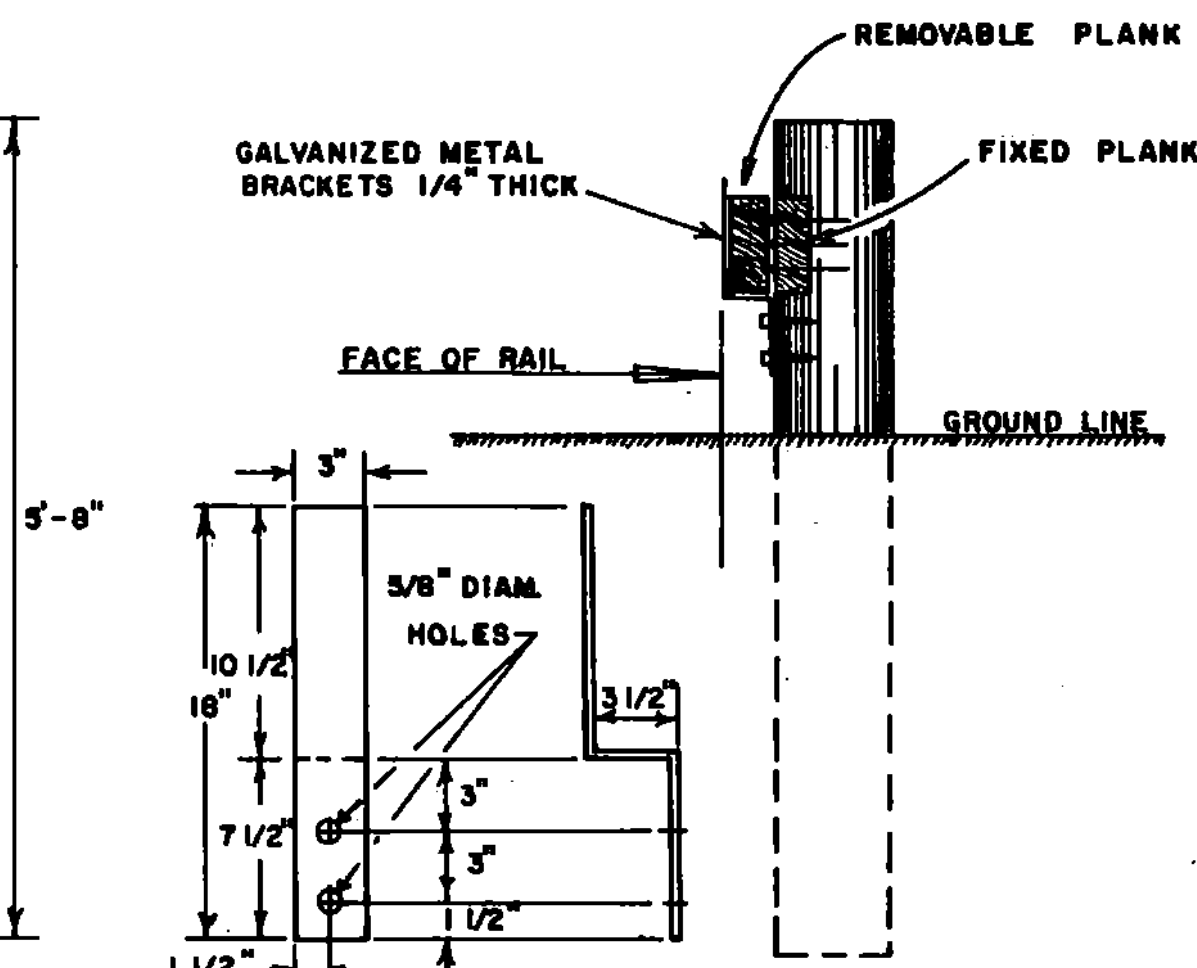


REFLECTIVE MATERIAL TO BE PLACED AS DIRECTED BY THE ENGINEER. POSTS ARE TO BE 4" TO 5 1/2" IN DIAMETER AND ARE TO BE PLACED AS DIRECTED BY THE ENGINEER. POSTS SHALL BE GIVEN A PRESERVATIVE TREATMENT.

WOOD GUIDE POSTS

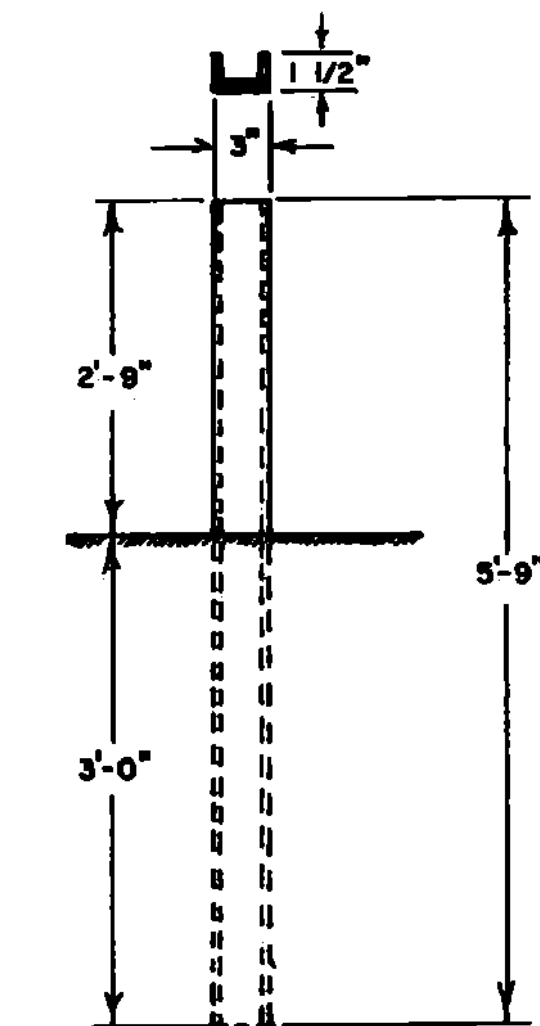


ENTRANCE THROUGH PLANK RAIL



BRACKET DETAIL

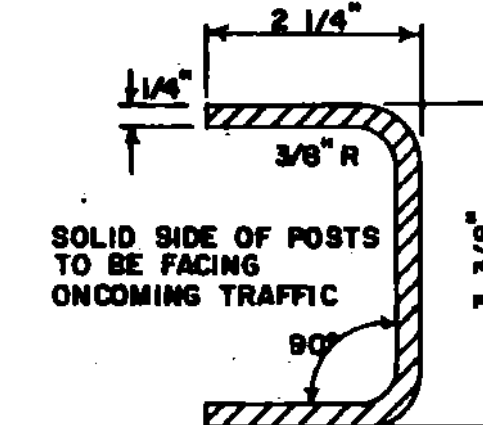
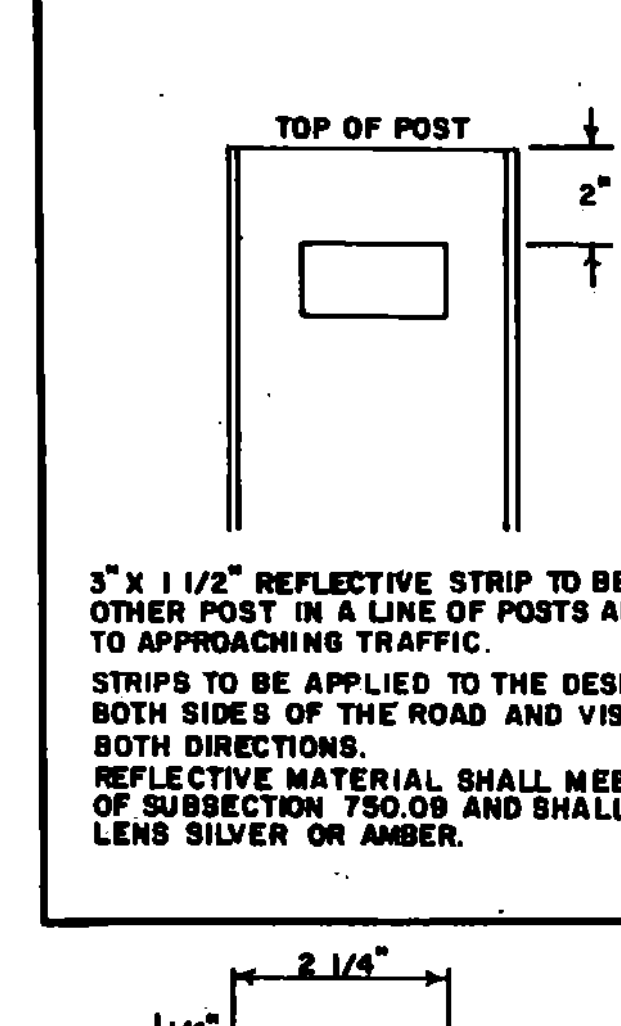
GALVANIZED METAL BRACKETS ARE TO BE INCLUDED IN THE UNIT BID PRICE FOR PLANK RAIL.



ALL STEEL MARKER POSTS TO BE GALVANIZED. STEEL MARKER POSTS TO BE PLACED AS DIRECTED BY THE ENGINEER.

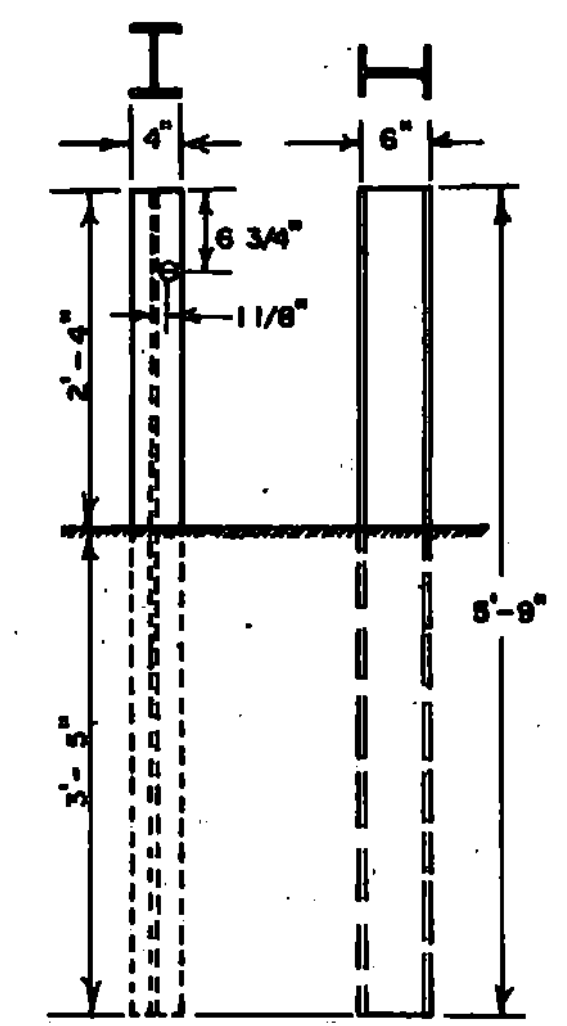
POSTS ARE TO BE AMERICAN STANDARD CHANNEL 5-9" x 3" (4.1 LBS PER FT.)

STEEL MARKER POSTS



ALTERNATE POST

3" x 1 1/2" REFLECTIVE STRIP TO BE APPLIED TO EVERY OTHER POST IN A LINE OF POSTS AND CLEARLY VISIBLE TO APPROACHING TRAFFIC. STRIPS TO BE APPLIED TO THE DESIGNATED POSTS ON BOTH SIDES OF THE ROAD AND VISIBLE TO TRAFFIC IN BOTH DIRECTIONS. REFLECTIVE MATERIAL SHALL MEET THE REQUIREMENTS OF SUBSECTION 750.09 AND SHALL BE OF ENCAPSULATED LENS SILVER OR AMBER.



ALL STEEL GUIDE POSTS TO BE GALVANIZED. REFLECTIVE MATERIAL TO BE PLACED AS DIRECTED BY THE ENGINEER. POSTS ARE TO BE 5-9" x 6" x 4" (85 LBS PER FT.)

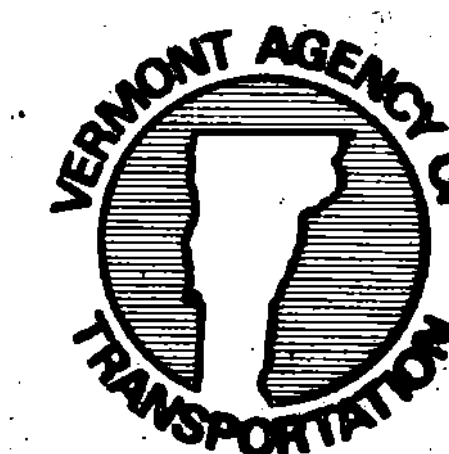
ALL POSTS IN A GIVEN RUN OF BARRIER TO BE UNIFORM.

STEEL GUIDE POSTS

REVISIONS AND CORRECTIONS
MAY 23, 1974 ALTERNATE POST ADDED
MAY 29, 1979 NOTE ON REFLECTIVE MATERIAL CHANGED
JULY 23, 1980 CHANGED DIAMETER OF WOOD MARKER POST AND WOOD GUIDE POST
MAY 28, 1982 REMOVED ALTERNATE POST DETAIL.
OCT. 31, 1985 REVISED TO CONFORM WITH 1986 SPECIFICATIONS.

APPROVED DATE Dec. 8, 1971
R.H. Arnold
CHIEF ENGINEER
E. J. Stehney
ASSY. CHIEF ENGINEER
G. M. Lane
HIGHWAY ENGINEER

PLANK RAIL
GUIDE POSTS
WOOD MARKER POSTS
STEEL MARKER POSTS



STANDARD
G-4