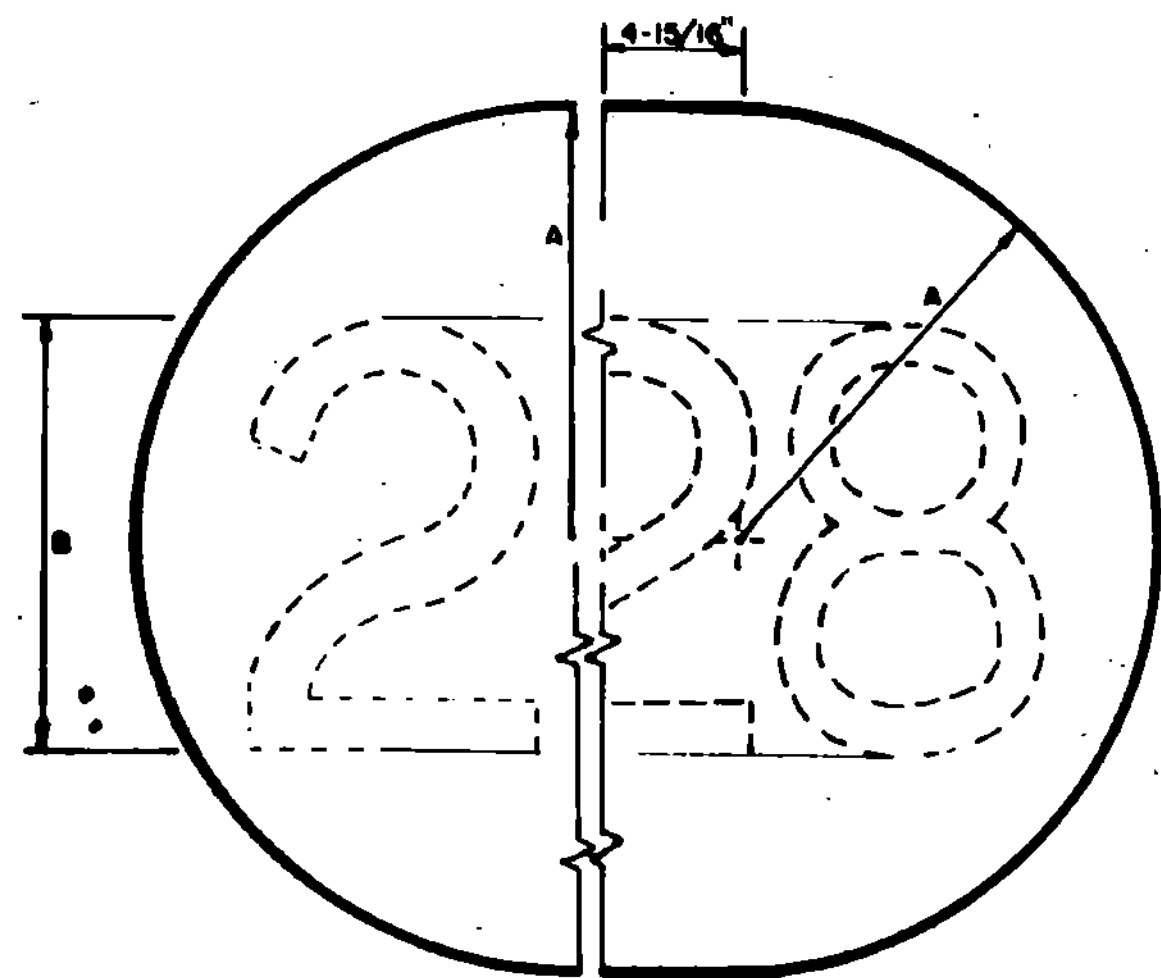


STATE ROUTE MARKER
FOR USE ON INTERSTATE GUIDE SIGNS

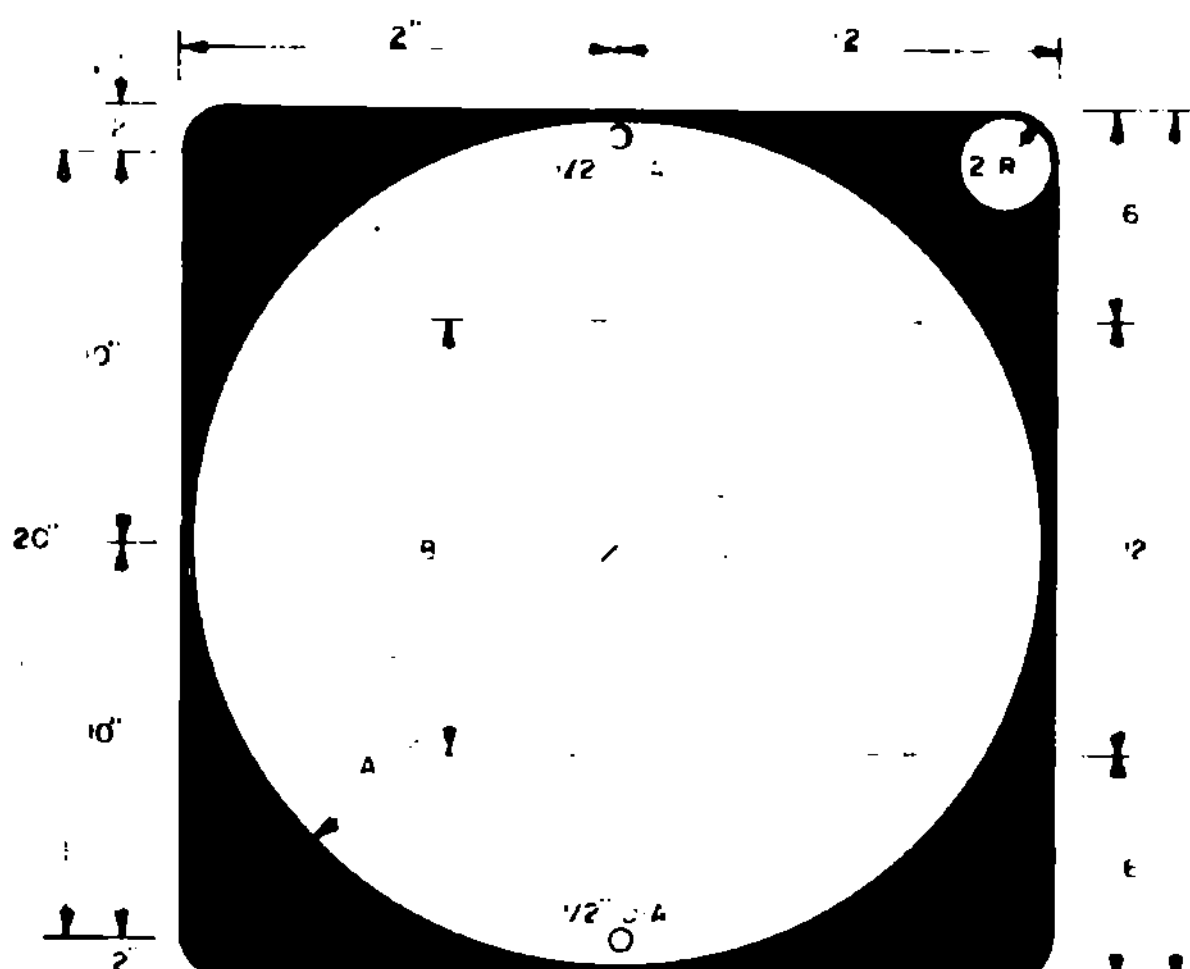


1 OR 2 DIGIT
(HALF SIGN)

3 DIGIT
(HALF SIGN)

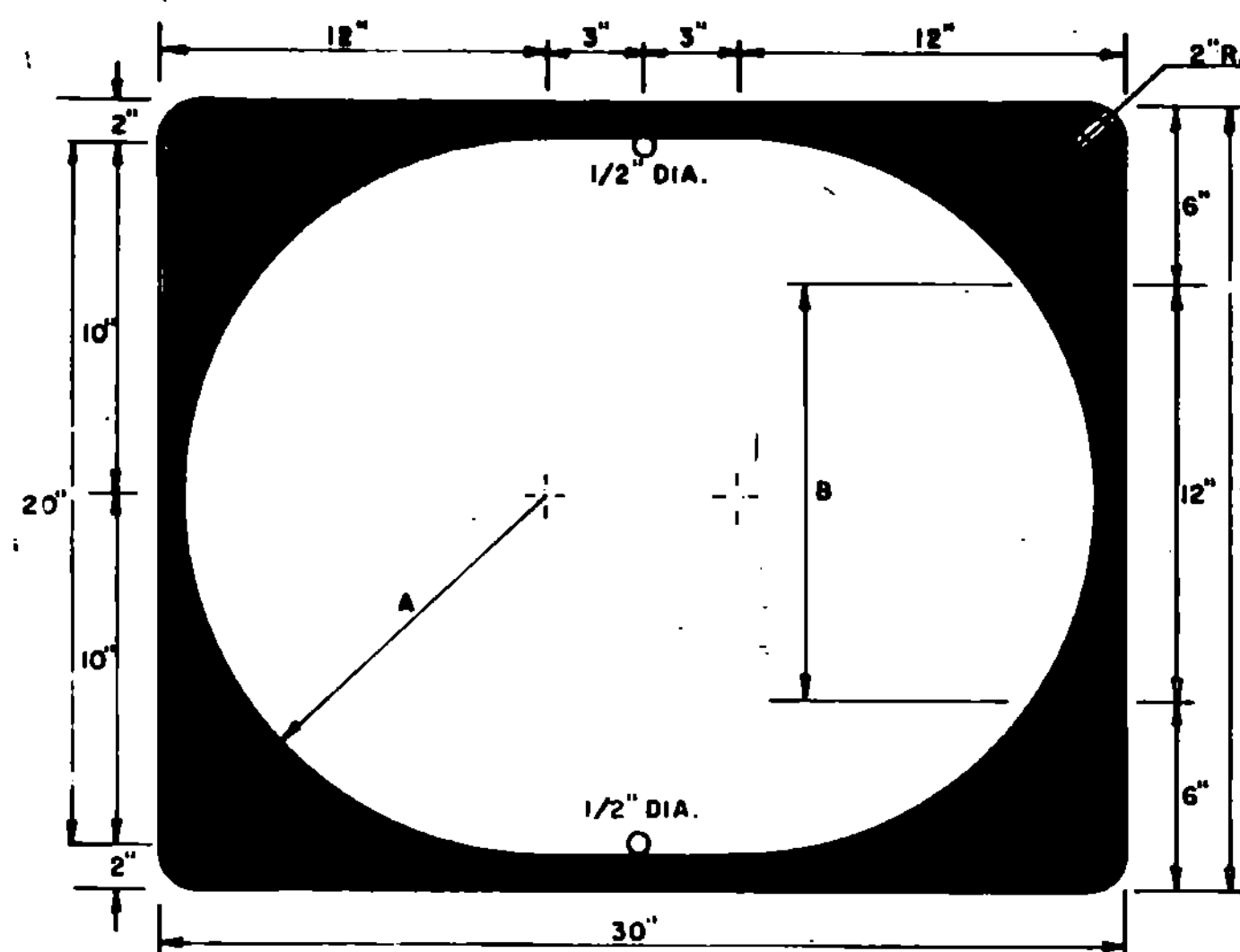
ROUTE NUMBER	A	B	SERIES
1 DIGIT	18"	18"	D
2 DIGITS	18"	18"	D
3 DIGITS	18"	18"	B

STATE ROUTE MARKER
FOR INDEPENDANT USE WITH MARKER ASSEMBLIES



1 OR 2 DIGIT

ROUTE NUMBER	A	B	SERIES
DIGIT	11"	12"	D
2 DIGITS	11"	12"	D
3 DIGITS	11"	12"	D



3 DIGIT
SEE CHART AT LEFT

MATERIALS

The sign base material may be any of the following, of the minimum thickness noted:

MATERIAL	THICKNESS
FLAT SHEET ALUMINUM	
Less than 24" x 24"	0.060"
24" x 24", 24" x 30"	0.080"
HIGH DENSITY OVERLAID PLYWOOD	
Less than 24" x 24"	3/8"
24" x 24", 24" x 30"	1/2"
GALVANIZED FLAT SHEET STEEL	
Less than 24" x 24"	18 gage
24" x 24", 24" x 30"	16 gage

Route markers to be mounted on interstate guide signs, shall be of a thickness as for signs less than 24" x 24"

The reflective material shall be white or silver reflective sheeting, applied to the entire background. The texts may be lettering film, silk screened, or hand painted.

COLORS

State route markers and auxiliary markers shall have black texts on reflectorized white or silver backgrounds.

LETTERING

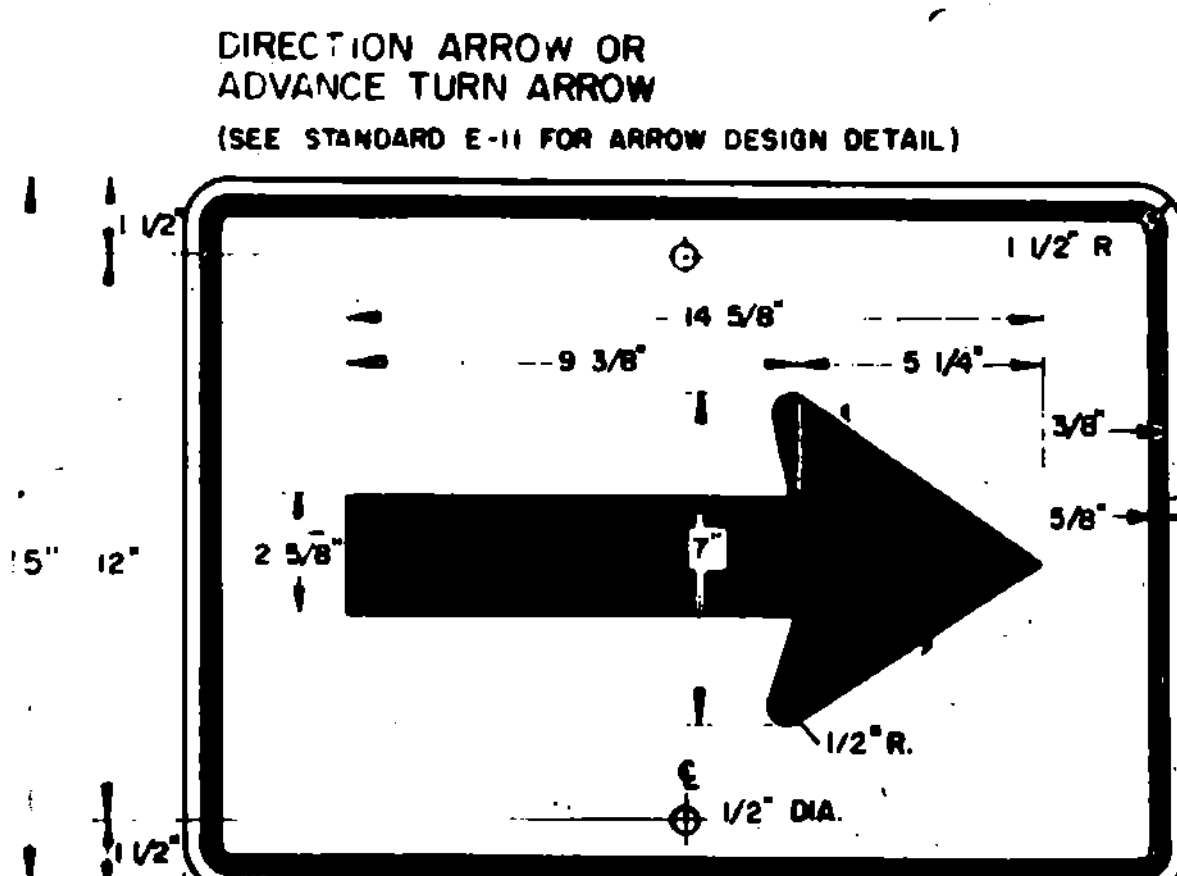
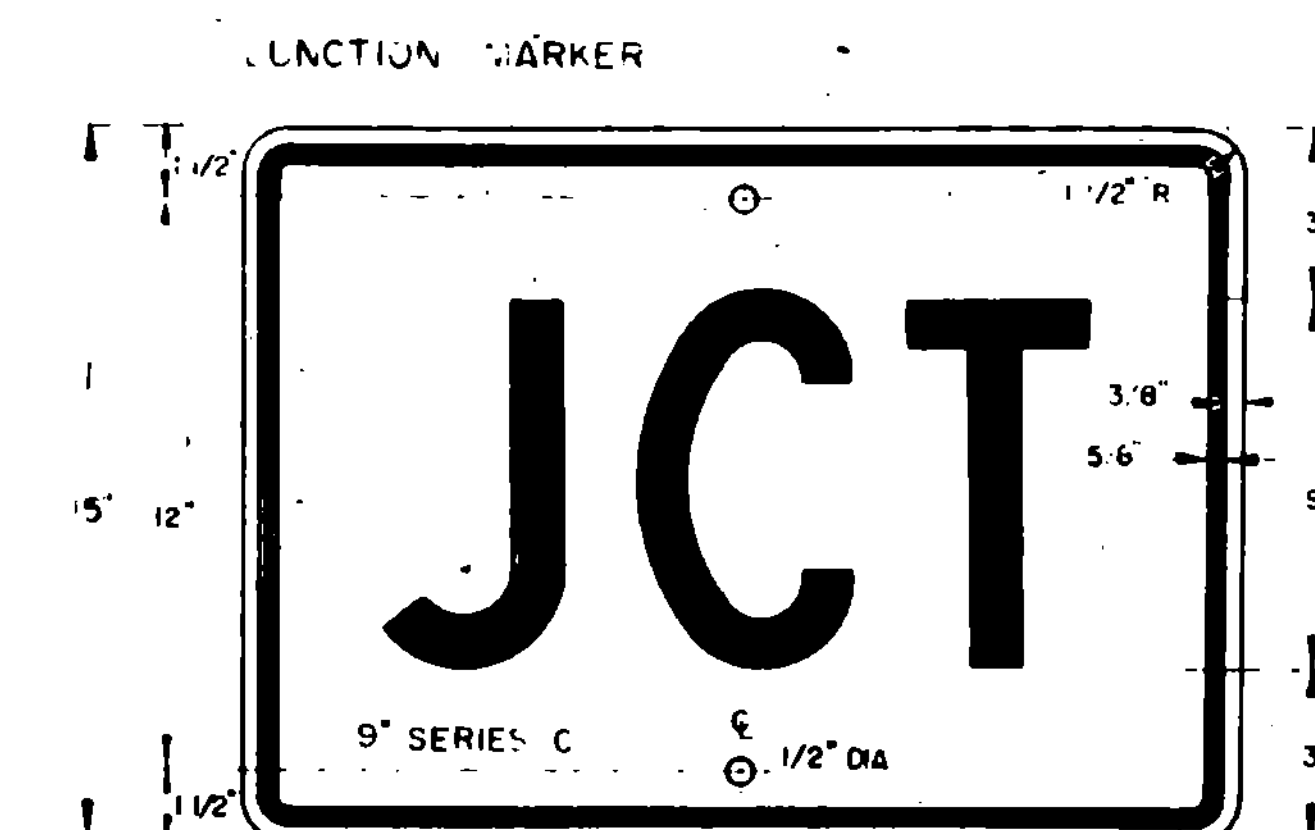
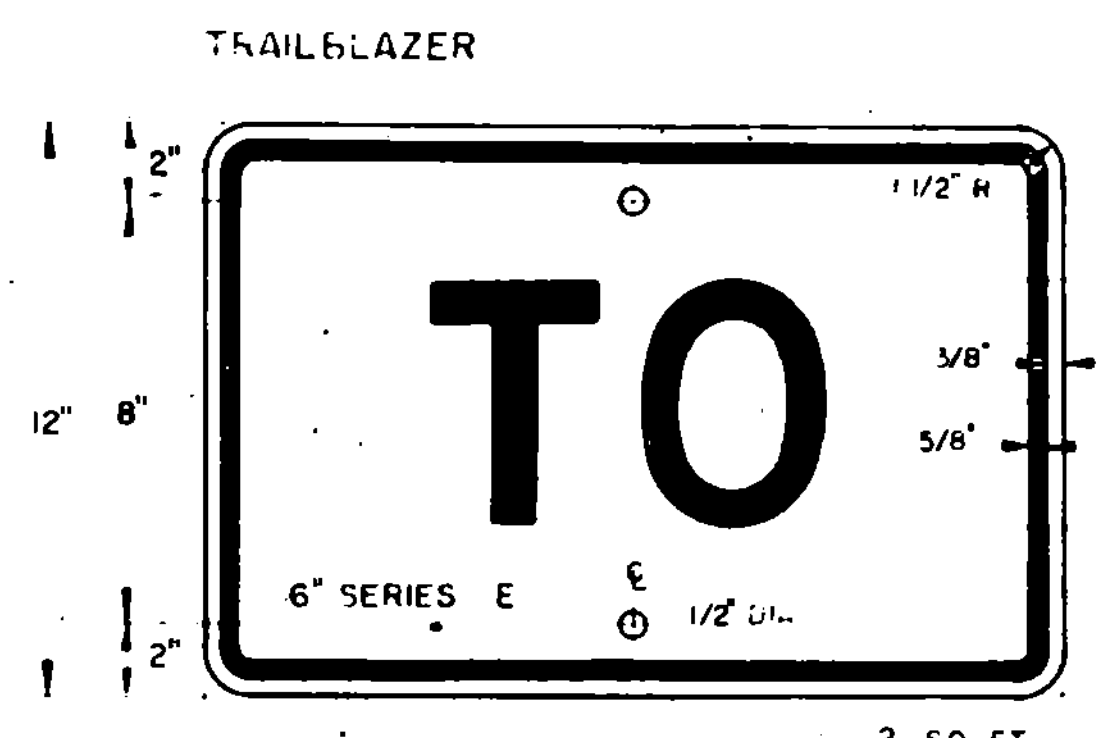
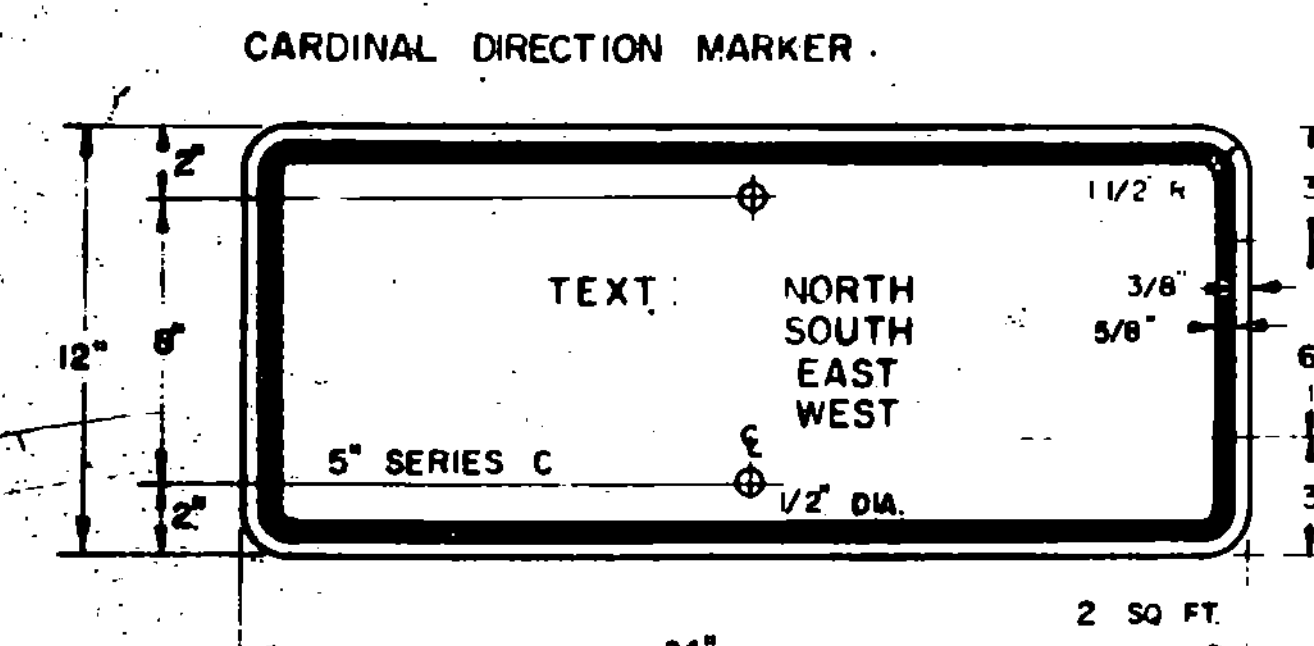
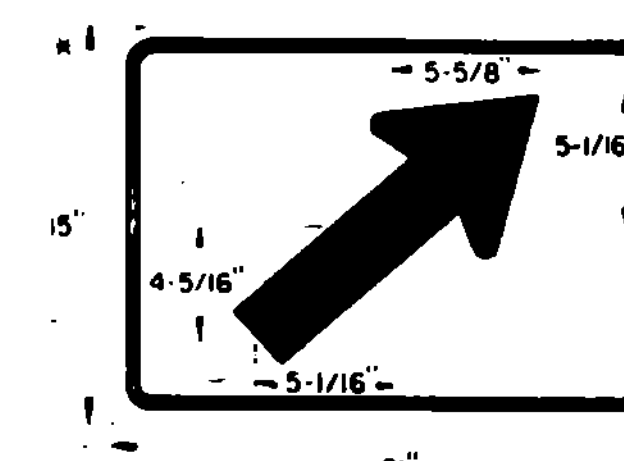
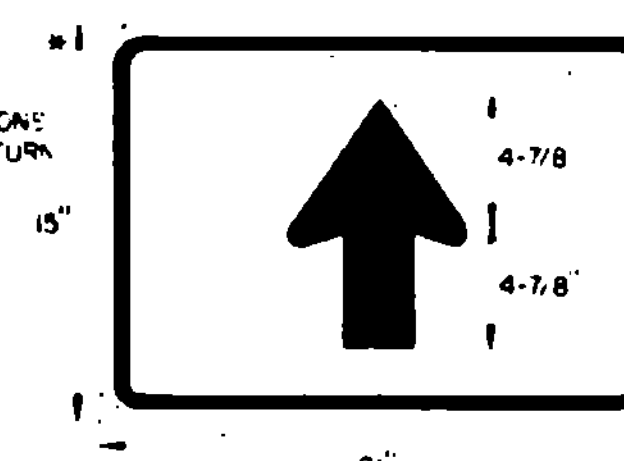
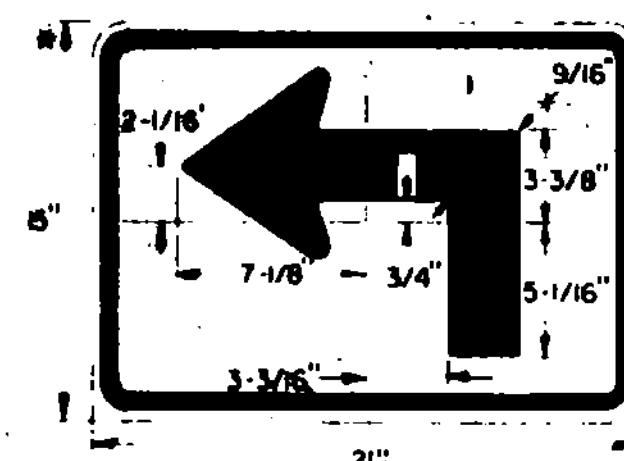
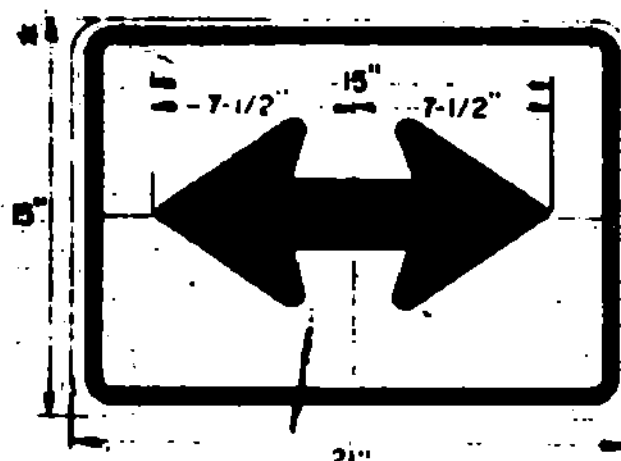
Letters and digits shall conform with the standard alphabets for highway signs approved by the National Joint Committee on Uniform Traffic Control Devices.

SPECIFICATIONS

State route markers and auxiliary route markers shall meet the standard state specifications for "Traffic Signs".

DESIGNS

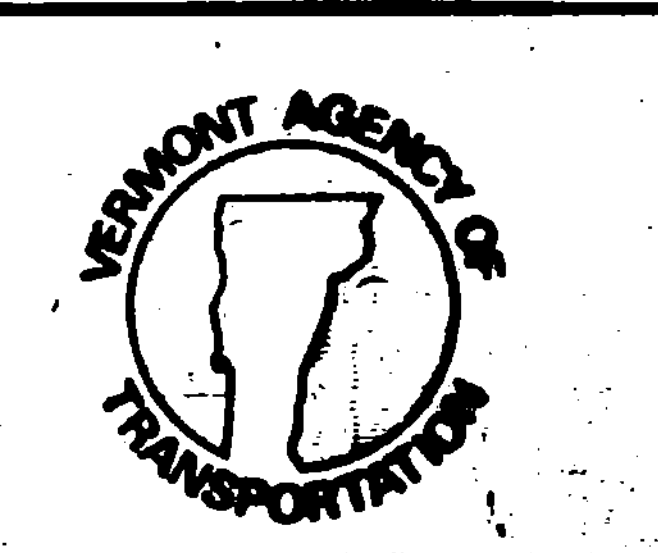
The designs of state route markers and auxiliary markers shall conform with the requirements set forth in the Manual on Uniform Traffic Control Devices prepared by the National Joint Committee on Traffic Control Devices



REVISIONS AND CORRECTIONS
MAY 3, 1982 - ADDITIONAL ADVANCE TURN ARROWS ADDED, BORDER DIMENSION CHANGED ON GUIDE SIGNS.
12/2/82 - ADDED THREE DIGIT DETAILS
FEB 5, 1988 - UPDATED TO 1988 SPECIFICATIONS

APPROVED. DATE Dec. 29, 1971
R. L. Crawford
CHIEF ENGINEER
E. W. Stickney
ASST. CHIEF ENGINEER
G. M. Lane
HIGHWAY ENGINEER

TRAFFIC SIGNS (GUIDE SIGNS)
STATE ROUTE MARKERS
AND AUXILIARY MARKERS



STANDARD
E-13