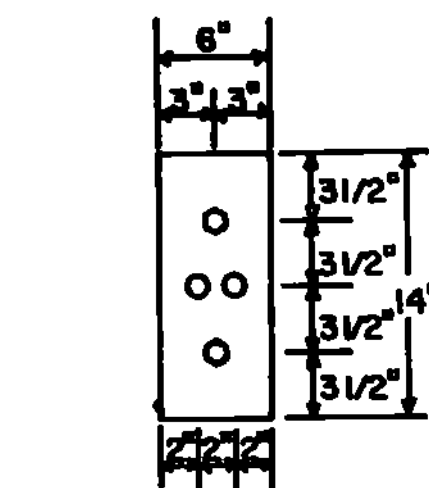
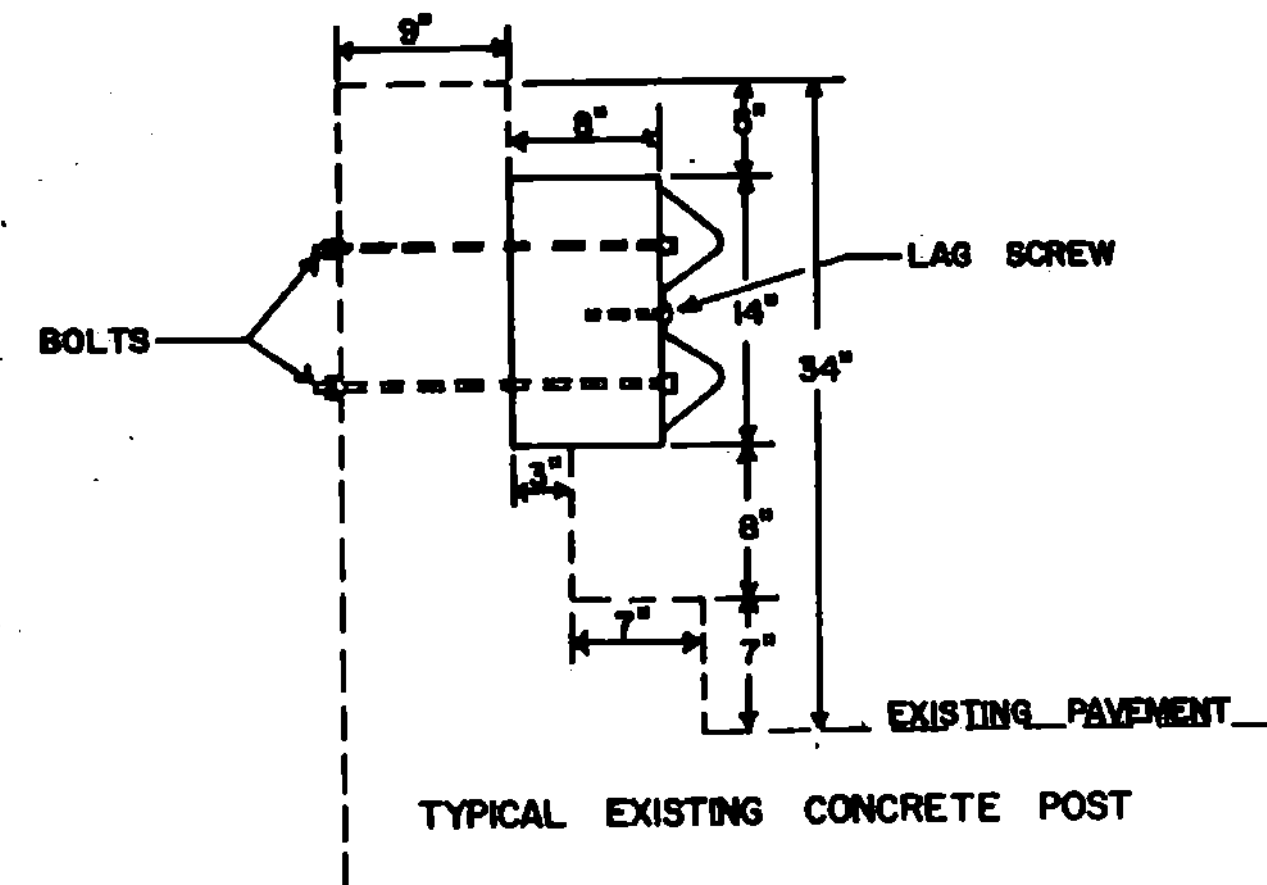
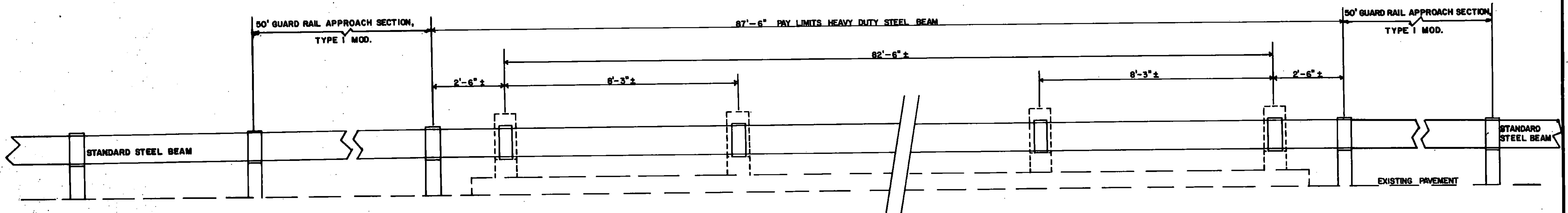


WORCESTER VT. RTE. 12 AT MILE MARKER 3.97



TYPICAL FRONT VIEW OF OFFSET BLOCK TO BE USED ON CONCRET POSTS

NOTES:

1. ALL WORK AND MATERIALS NECESSARY TO INSTALL THE RAILING SHALL BE PAID FOR UNDER THE ITEM GUARD RAIL, HEAVY DUTY STEEL BEAM.
2. ALL EXISTING FITTINGS WILL BE CUT FLUSH WITH POST FACES.
3. EXISTING POSTS SHALL BE REPAIRED WITH MORTAR, AS NECESSARY, TO INSURE THAT OFFSET BLOCKS FIT.
4. BOLTS USED TO ATTACH OFFSET BLOCKS TO EXISTING POSTS SHALL BE 3/4" WITH NUTS AND WASHERS. BOLTS TO BE PLACED IN EXISTING POSTS THROUGH 1" DRILLED AND GROUTED HOLES.
5. LAG SCREWS TO BE 5/8" X 4" WITH WASHER.
6. OFFSET BLOCKS TO BE 6"X8"X14" TREATED TIMBER.
7. SEE STANDARD SB-R4B-82 FOR GUARD RAIL APPROACH SECTION, TYPE I DETAILS.
8. TRANSITION GUARD RAIL TO STANDARD HEIGHT WITH FIRST PANEL (12'-6") OFF THE END OF THE BRIDGE.