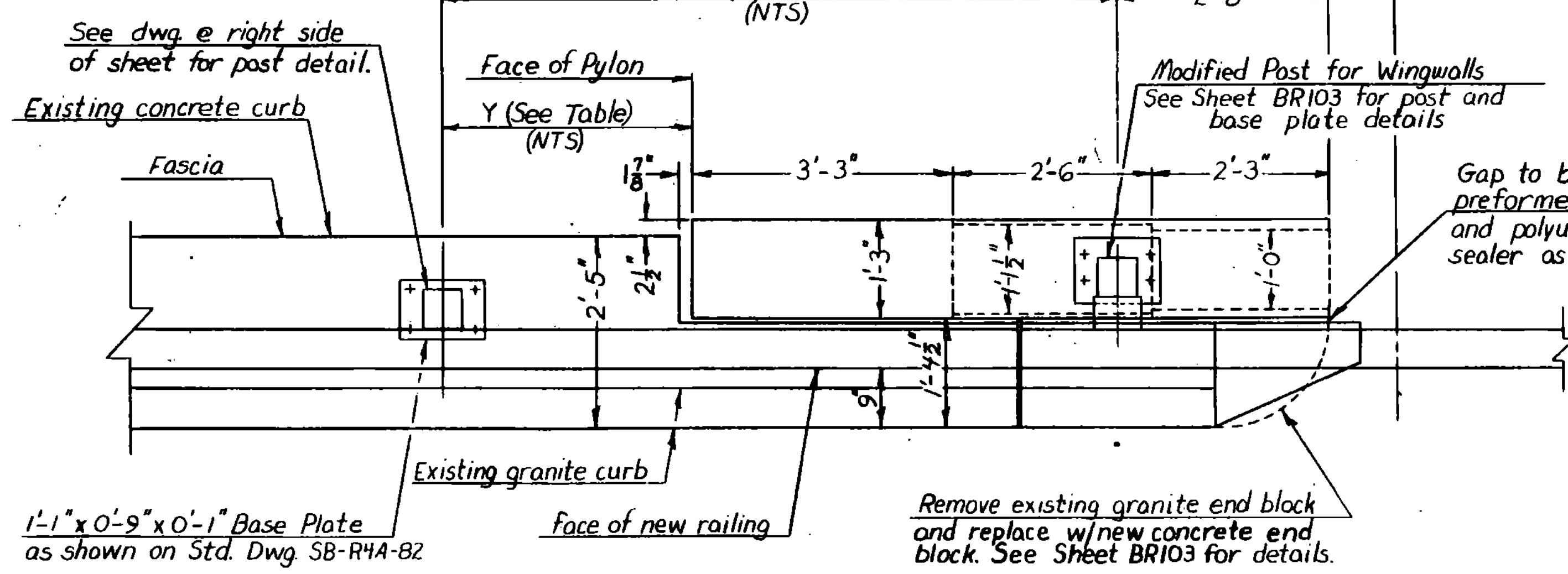


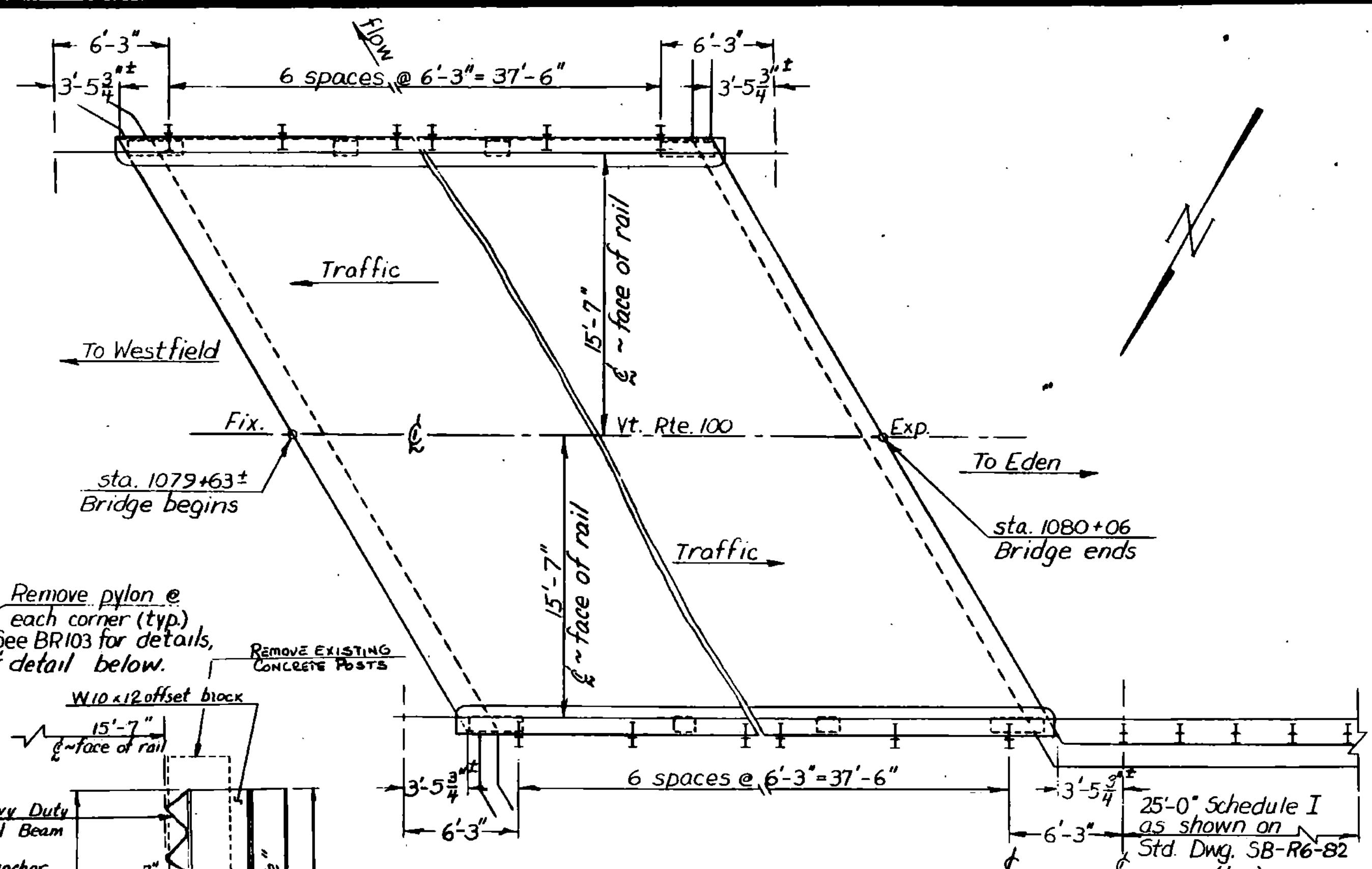
CURVE DATA
 $\Delta = 31^\circ 32' \text{ LT.}$
 $R = 1273.6'$
 $T = 359.6'$
 $L = 701.6'$
 $E = 49.8'$

PYLON	X	Y
A	8'-8 3/4"	3'-4 3/4"
B	8'-5 3/4"	3'-1 3/4"
C	8'-3 1/2"	2'-11 1/2"
D	8'-10"	3'-6"

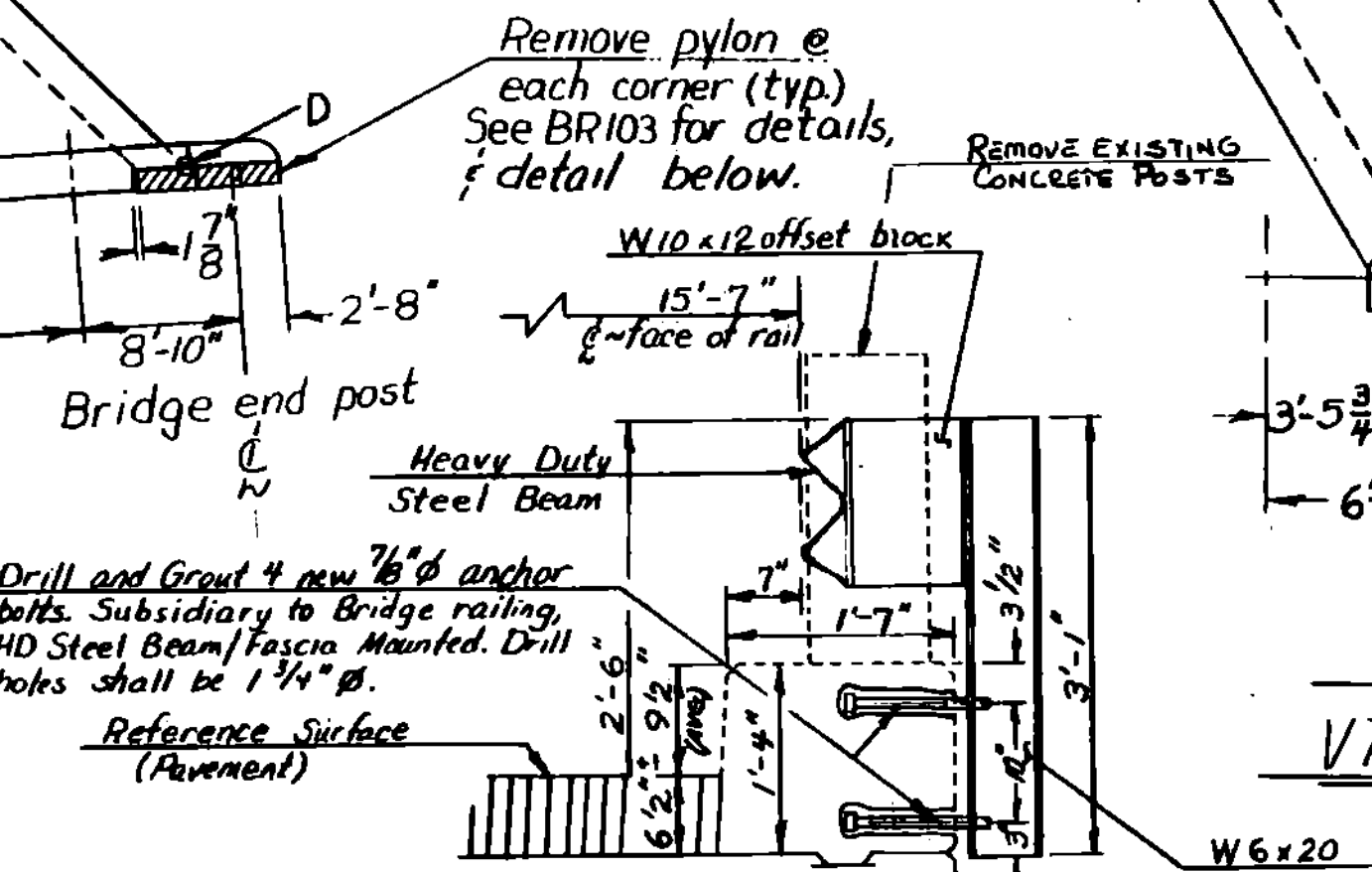
BRIDGE RAILING PLAN
U.S. RTE. 4 - BRIDGE N^o 24
MENDON
 $\frac{3}{8}'' = 1'-0''$



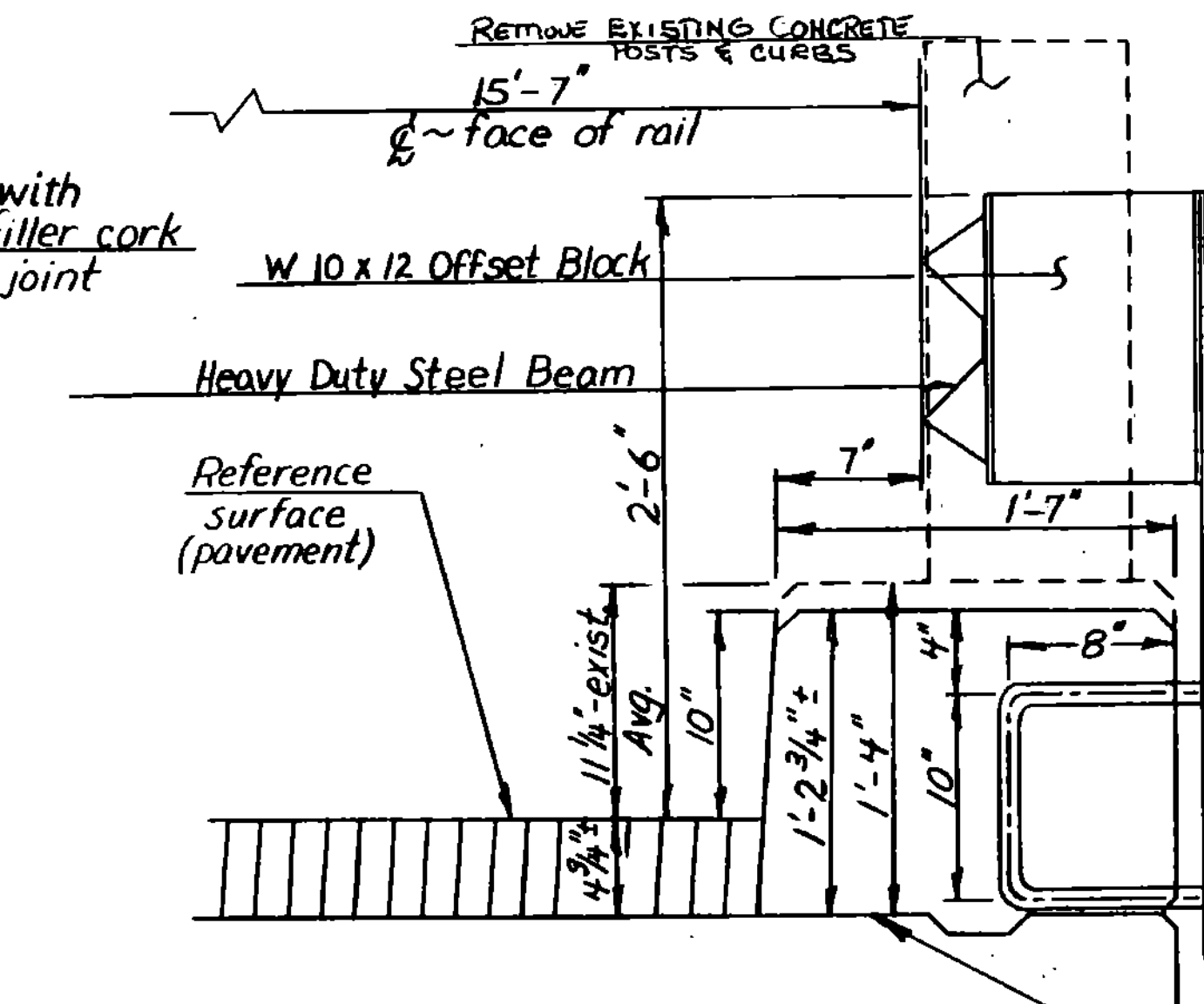
PYLON REMOVAL PLAN
U.S. RTE. 4 - BRIDGE N^o 24
 $\frac{3}{8}'' = 1'-0''$



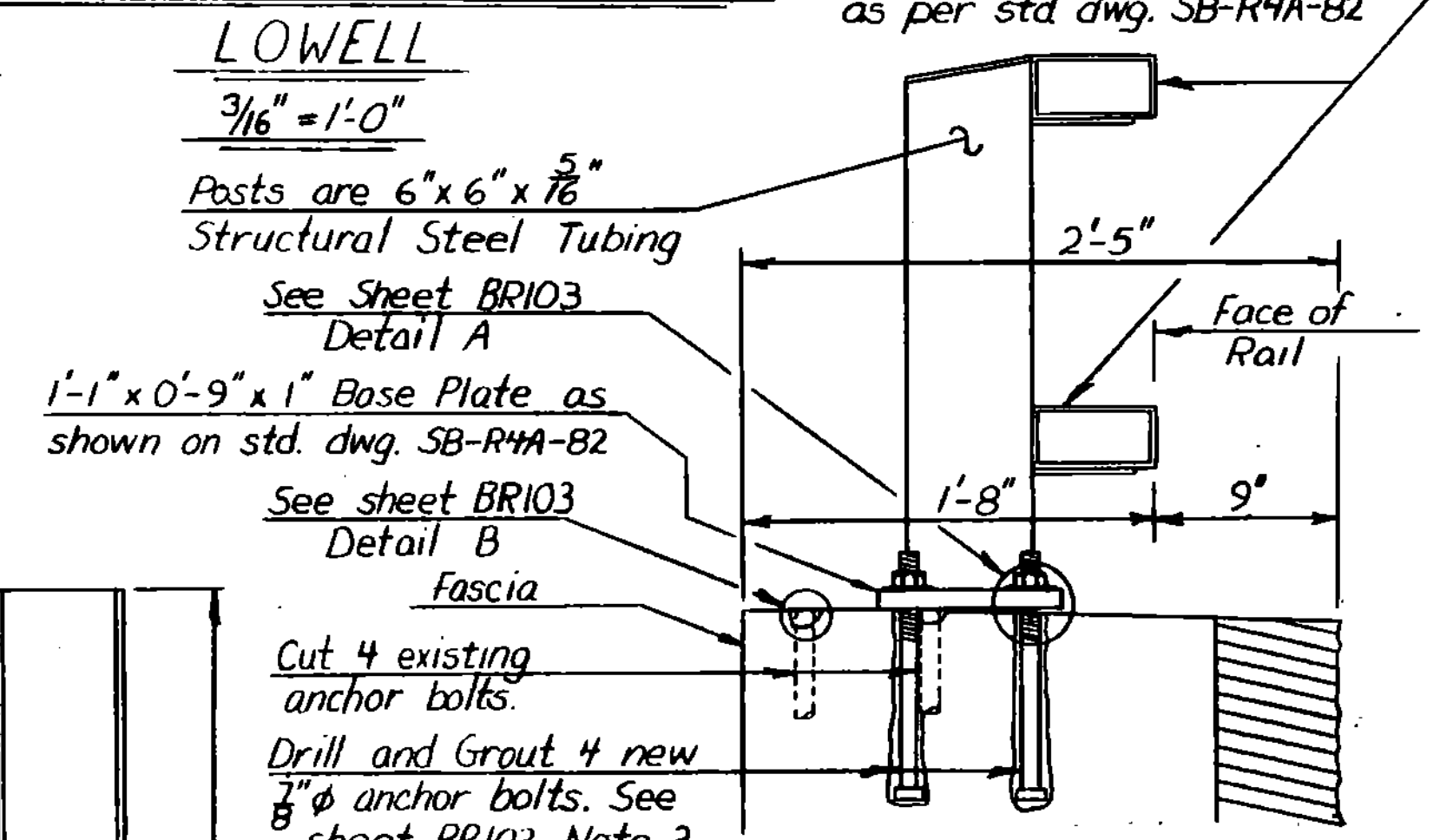
BRIDGE RAILING PLAN
VT. RTE. 100 - BRIDGE N^o 234
LOWELL



POST AND CURB SECTION
upstream (typ.)
VT. RTE. 100, BRIDGE N^o 234
 $\frac{3}{4}'' = 1'-0''$



POST AND CURB SECTION
Downstream (typ.)
VT. RTE. 100, BRIDGE N^o 234
 $\frac{1}{2}'' = 1'-0''$



ELEVATION-POST TYPE B
 $\frac{1}{2}'' = 1'-0''$
 (To Be Used On U.S. 4, Br. 24)

STATE OF VERMONT AGENCY OF TRANSPORTATION	
Town of MENDON, LOWELL	Bridge No. 24, 234
Highway No. U.S. 4 / VT. 100	Loc. Sta. _____ Surv. Sta. _____
BRIDGE RAILING PLANS	
U.S. 4, BRIDGE 24 AND VT. 100, BRIDGE 234	
Designed By G.S. ROGERS	Drawn By M.P. KEENE
Checked By D.W. NEWTON - 11/85	Bridge Design Supervisor FWY. Balkum Date 3/86
PROJECT	PROJECT NO.
STATEWIDE	F SFTY (85)
L&C info.	
Bridge Sheet No. BR101	Sheet 15 of 200