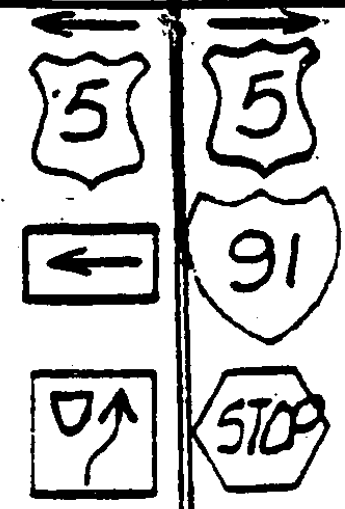


Vt. Rte. 25-A

US-5 North

W 10-3* (New)
To be placed
min. of 100' North
on Lt. side of
U.S. 5

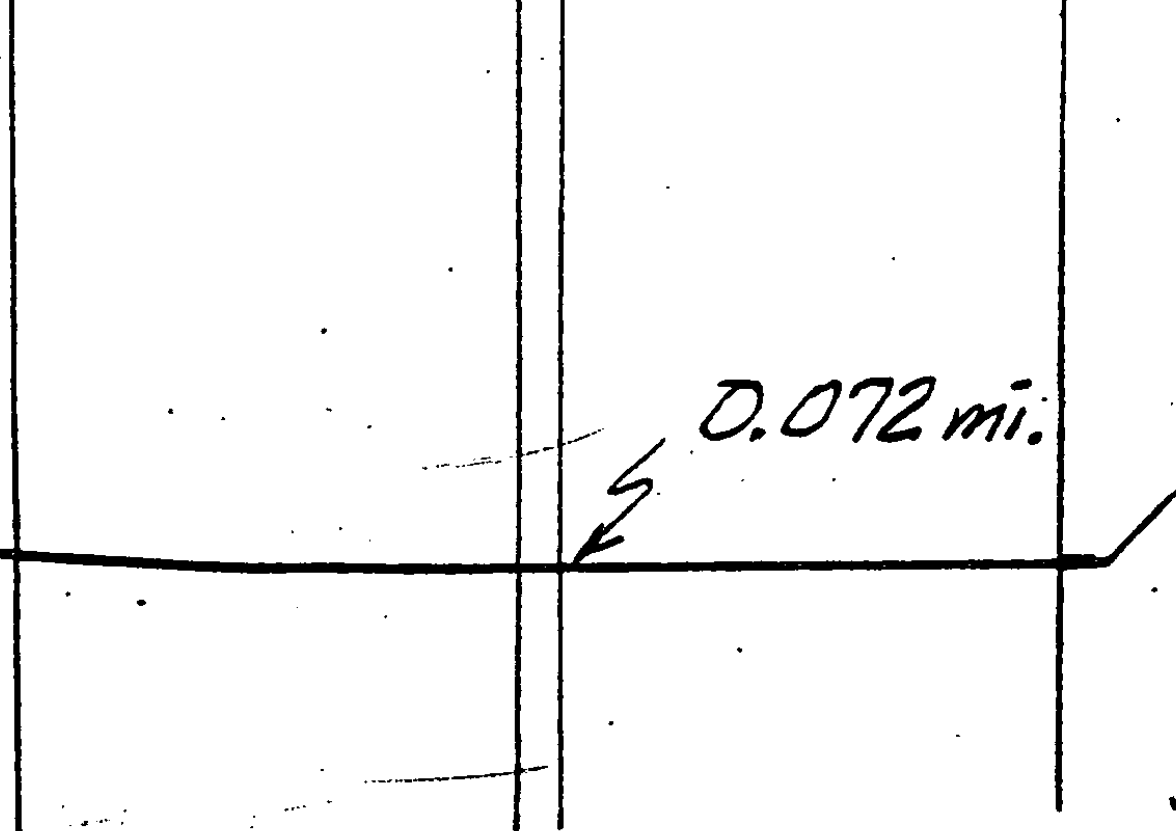
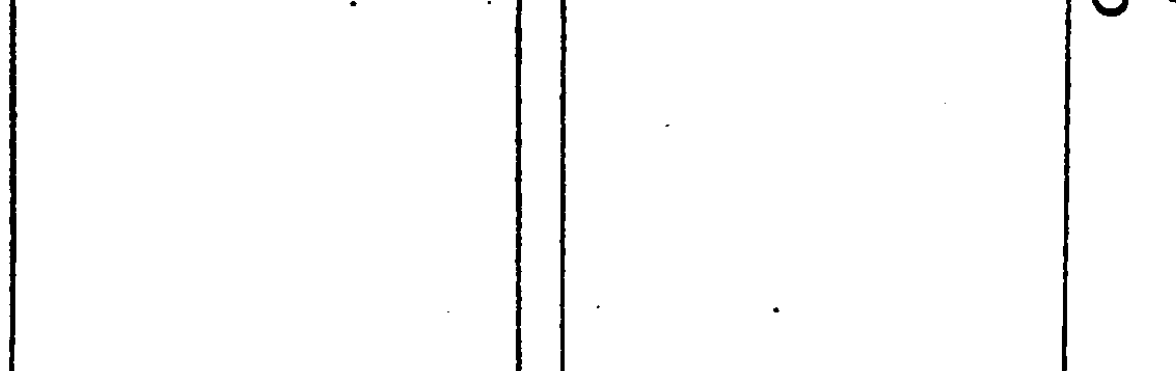
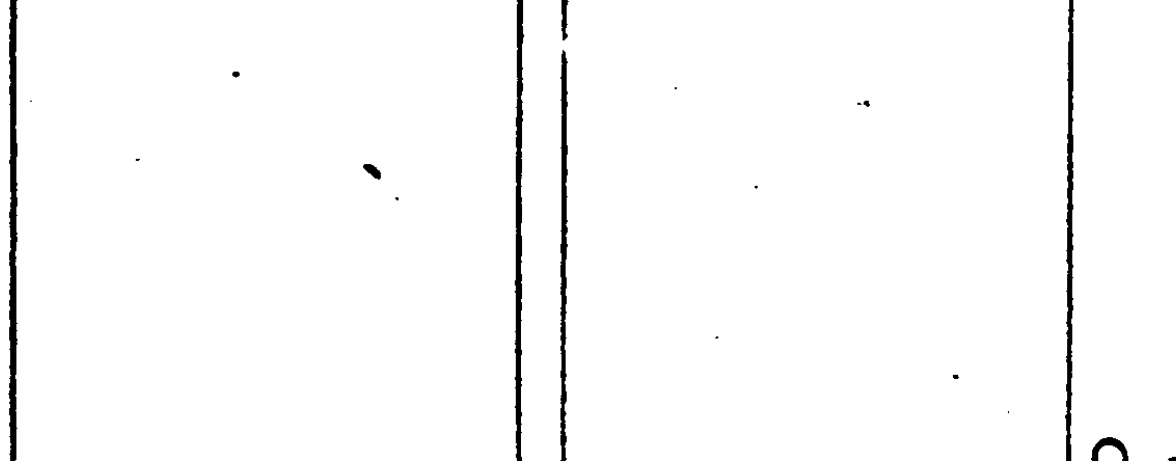
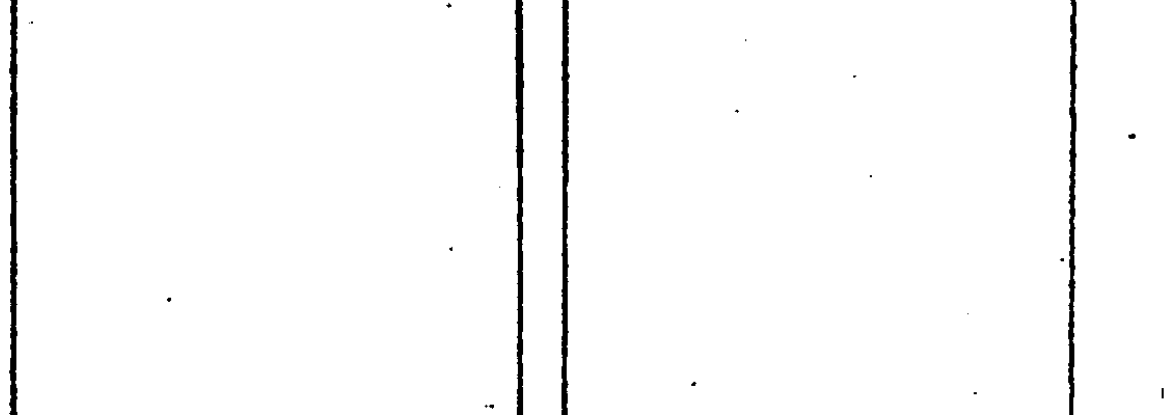
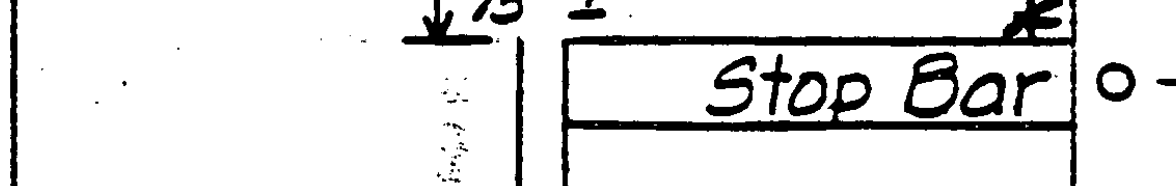
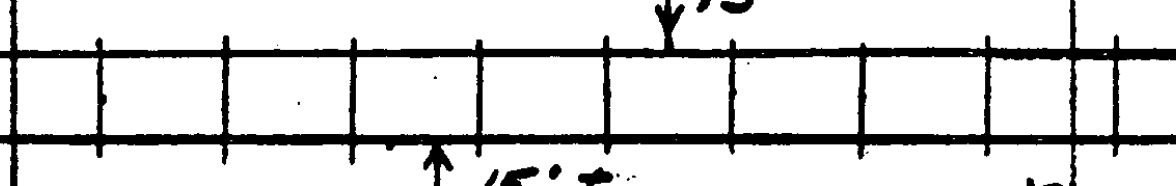
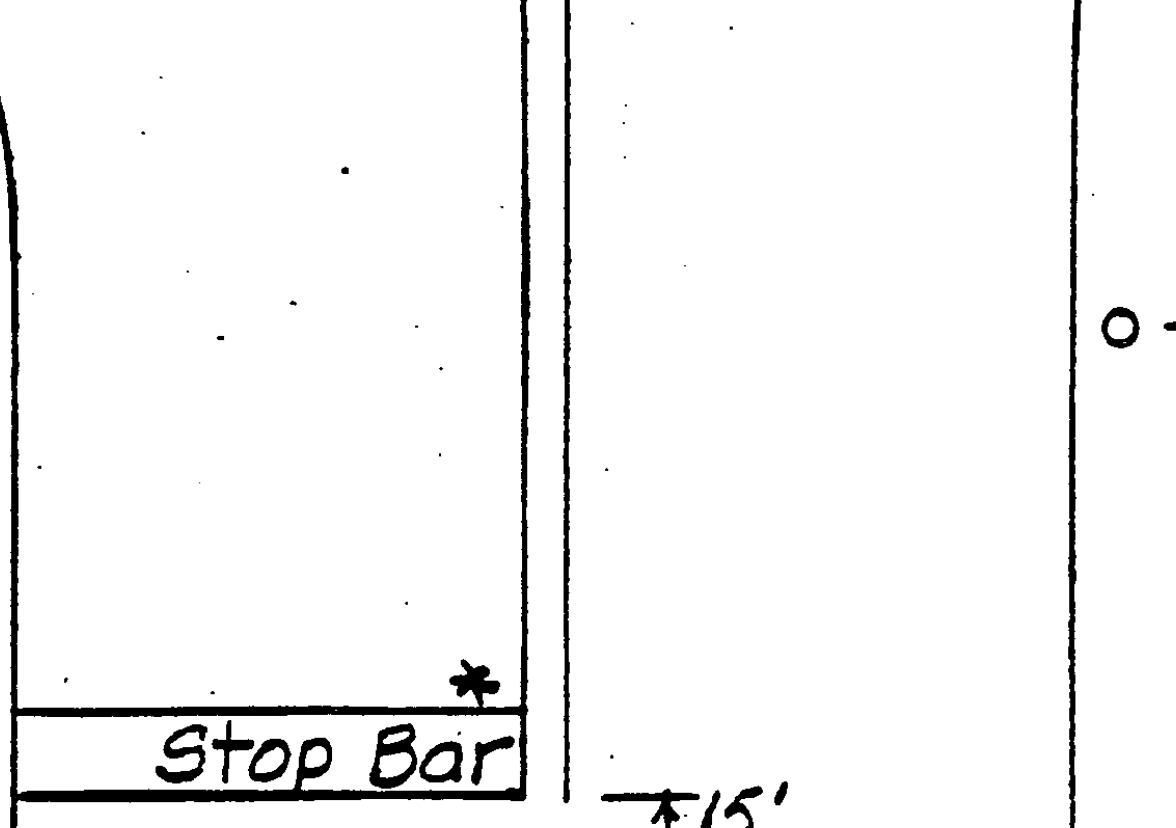
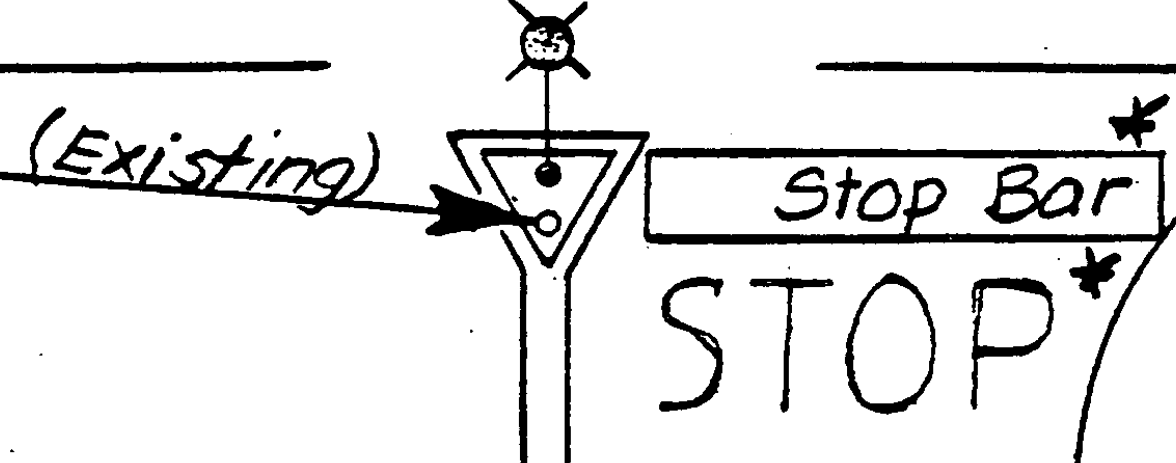
NORTH



W 10-3* (New) dr.
To be placed a
min. of 100' south
on Rt. side of US-5

Advan. Warn. Sign
Less than Min. (Existing)

Signal, 3-Lights & X-Bucks
(Existing)



Stop Bar
STOP

Speed Limit 35 MPH
(Existing)

Stop Bar

Signal, 1-Light, X-Bucks
(Existing)

dr.

Advan. Warn. Sign
Min. 100'
from rail (Existing)

dr.

dr.

Not to Scale

* Applied under
this contract.

0.072 mi.

FAIRLEE
F040-1(1)S

Sht. 6 of 23

Bridge