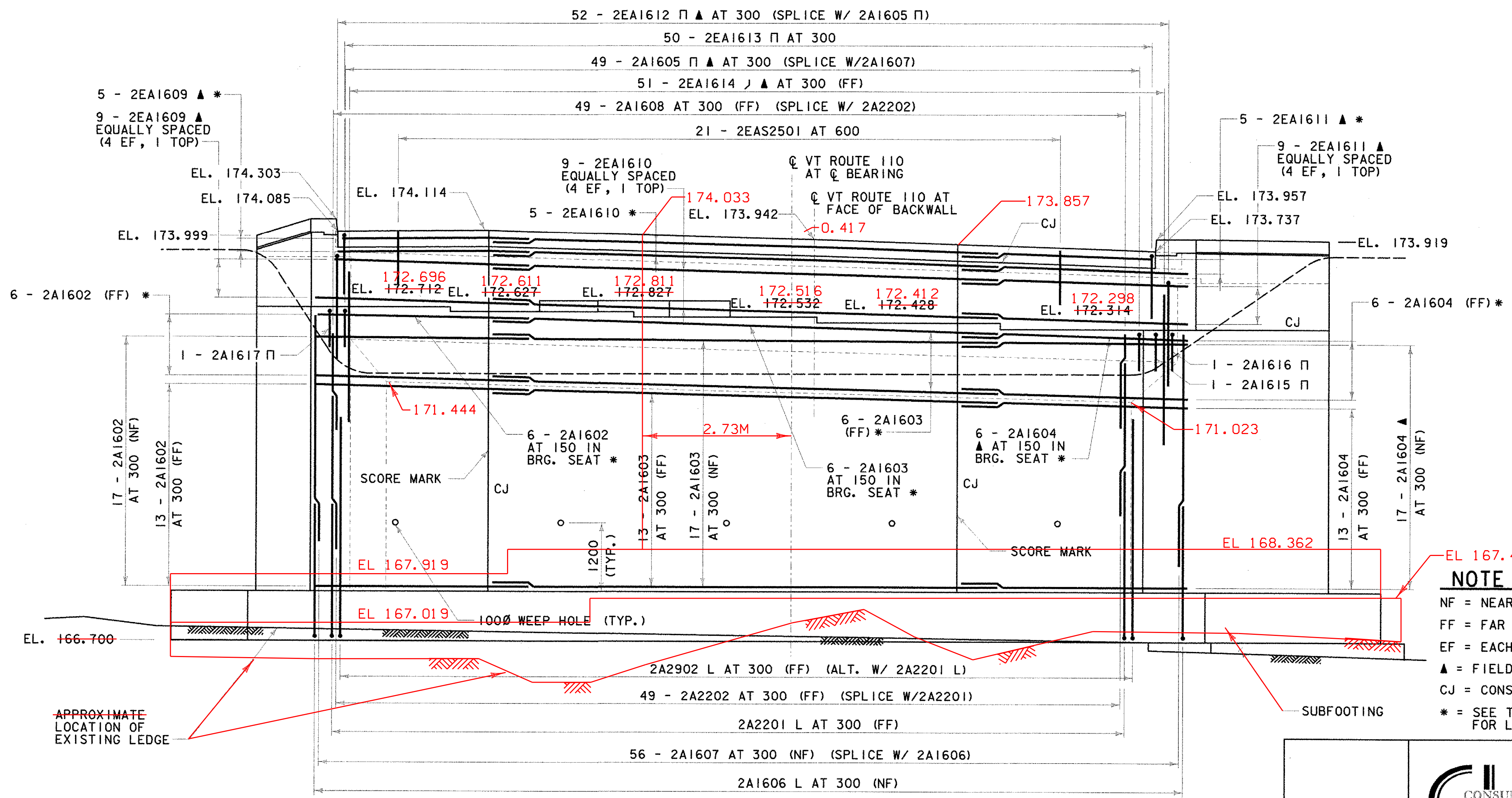
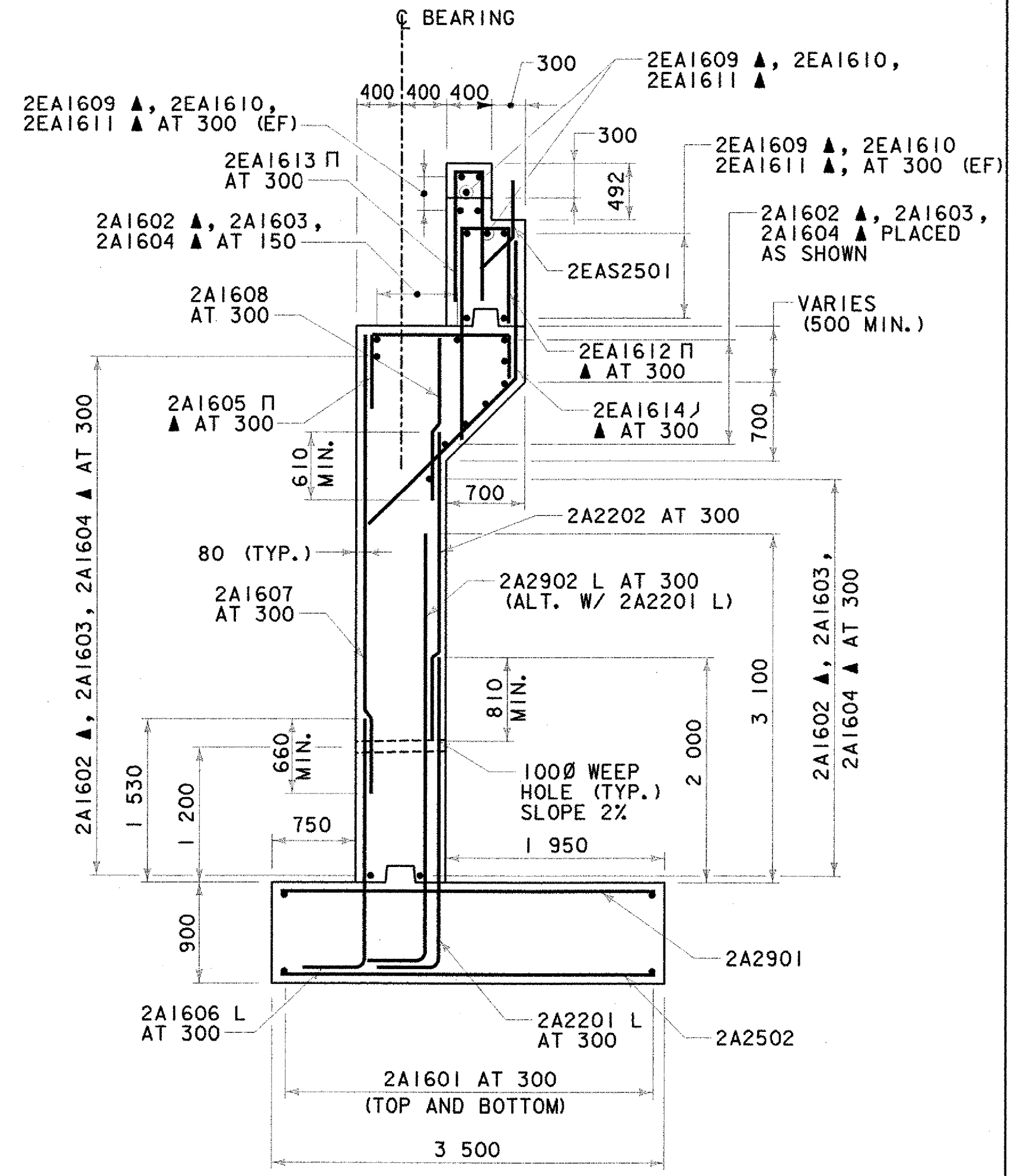


◆ RADIAL DIMENSION

| DISTANCE X | A | B |
|------------|-----|------|
| 1000 | 197 | 953 |
| 1500 | 249 | 1001 |
| 2000 | 270 | 1020 |
| 2500 | 262 | 1013 |
| 3000 | 223 | 977 |
| 3500 | 154 | 913 |
| 4000 | 53 | 821 |
| 4215 | 0 | 773 |

NOTE: WINGWALL NO. 4 GEOMETRY IS STRAIGHT (NOT CURVED), BASED ON A CHORD DRAWN BETWEEN THE WORKING POINTS.



NOTE
 NF = NEAR FACE
 FF = FAR FACE
 EF = EACH FACE
 ▲ = FIELD CUT
 CJ = CONSTRUCTION JOINT
 * = SEE TYPICAL SECTION FOR LAYOUT

**STATE OF VERMONT
AGENCY OF TRANSPORTATION**

| | | | |
|---|-----------|--------------------------|-------------|
| Town Of | TUNBRIDGE | Bridge No. | 4 |
| Highway No. | VT.110 | Log Sta. | |
| | | Surv. Sta. | |
| VT.110 OVER THE FIRST BRANCH OF WHITE RIVER | | | |
| ABUTMENT NO. 2 DETAILS | | | |
| Designed By | JH | Drawn By | MWS |
| Checked By | RMR | Date | 3/03 |
| | | Bridge Design Supervisor | LMM |
| | | Date | 3/03 |
| PROJECT | TUNBRIDGE | PROJECT NO. | BRS 0169(6) |
| I.G.C. Info. | | | |
| Bridge Sheet No. | | Sheet | 94 of 128 |

