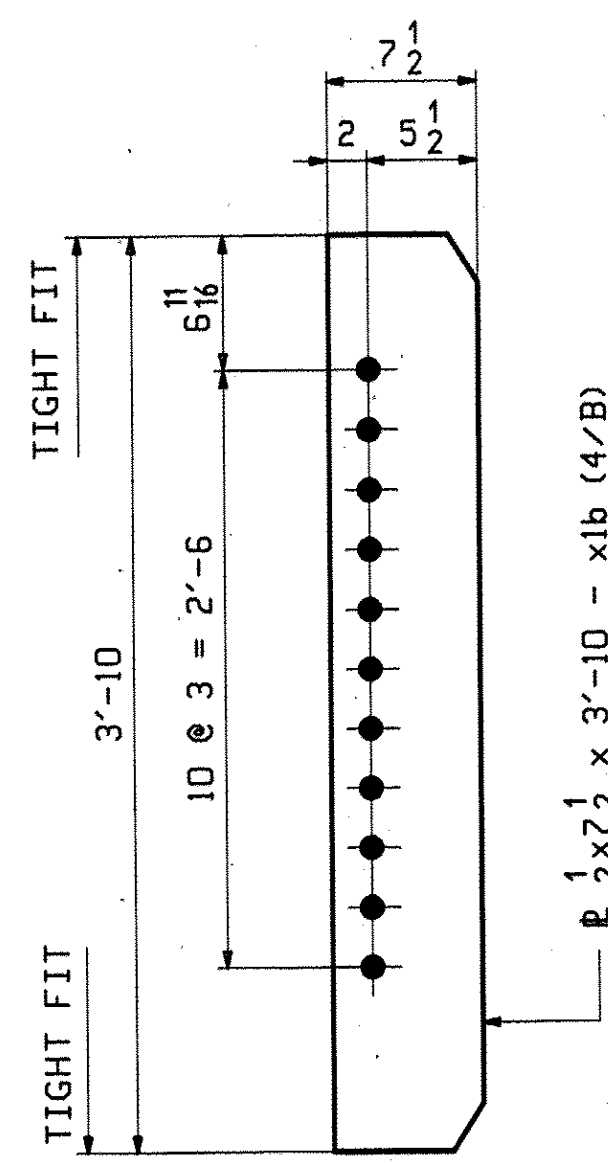
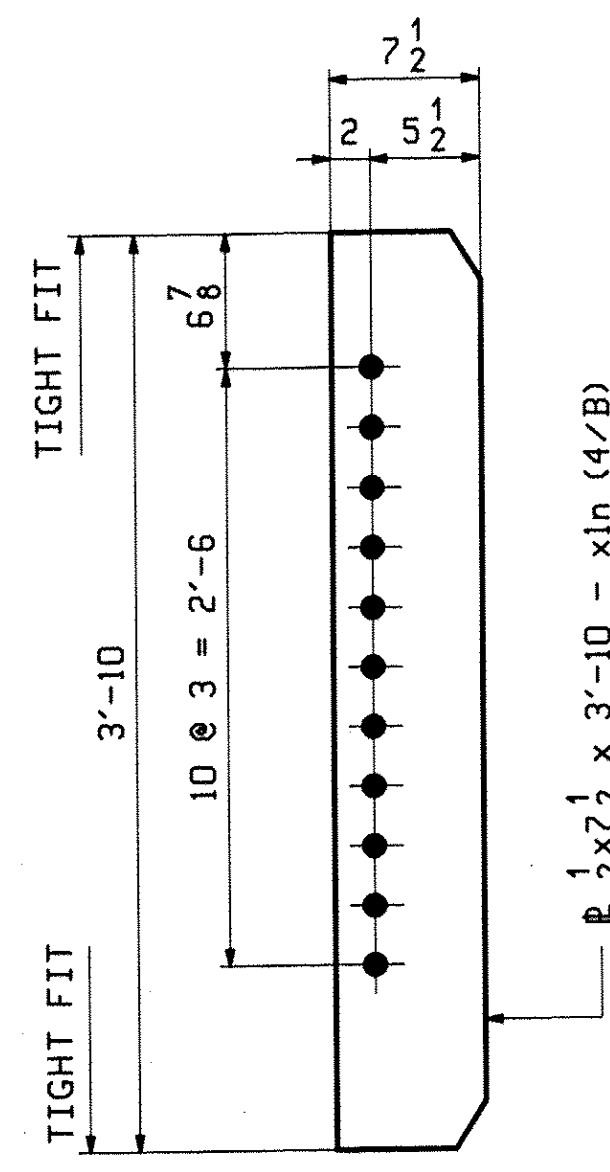


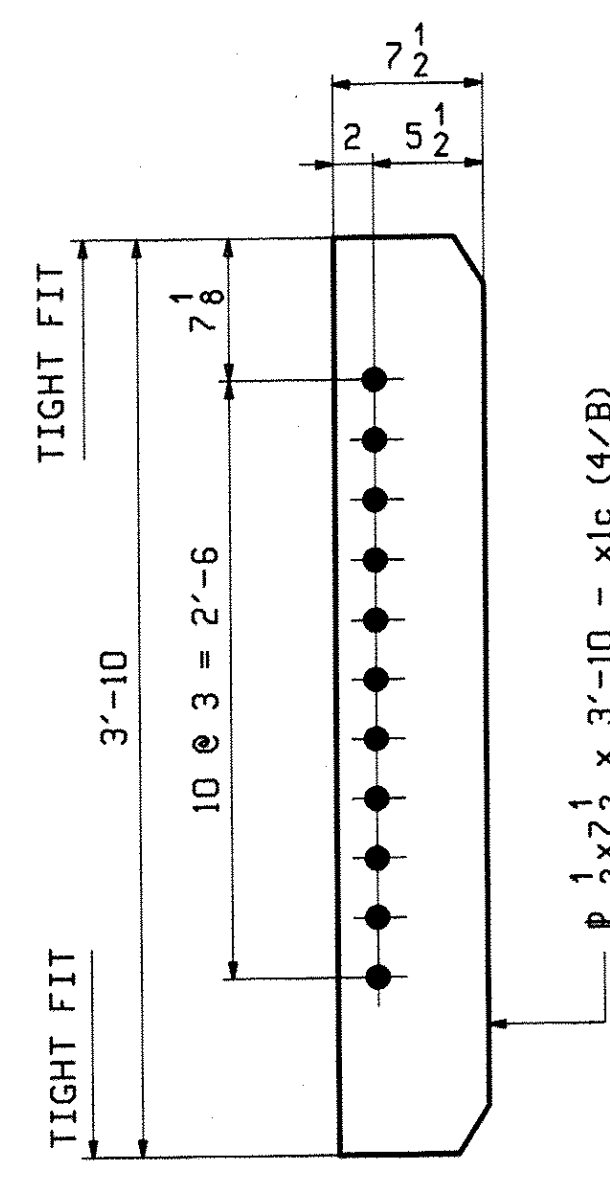
40 ~ CONN. STIFF ~ x1a
W40x149 TO HIGH GIRDER



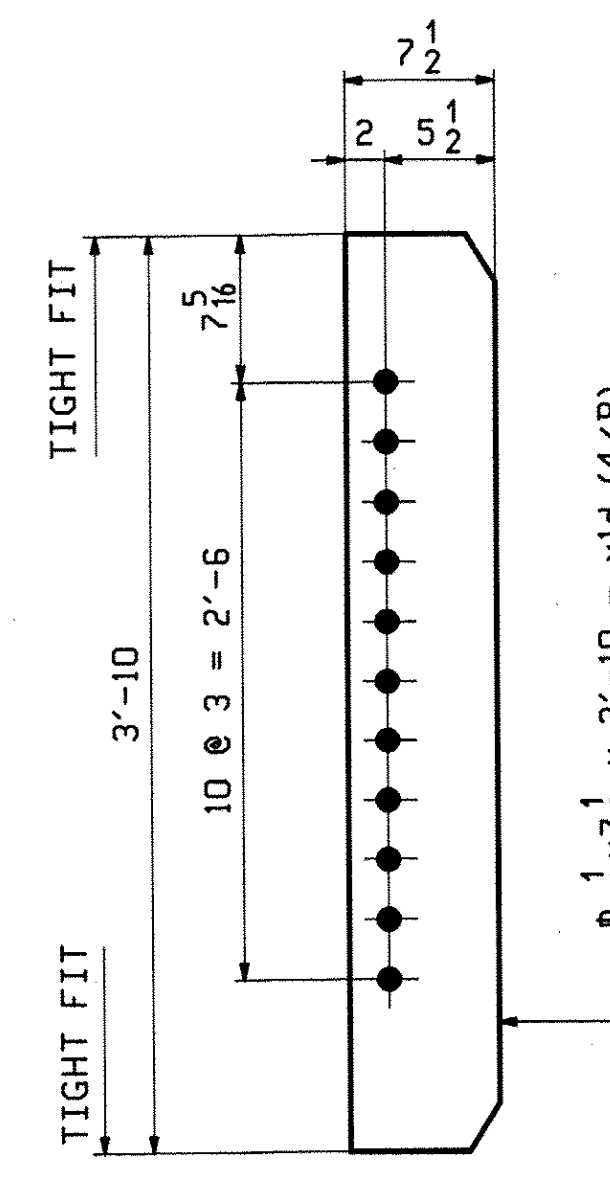
21 ~ CONN. STIFF ~ x1b
W40x149 TO LOW GIRDER
1 1/8" AVG DROP



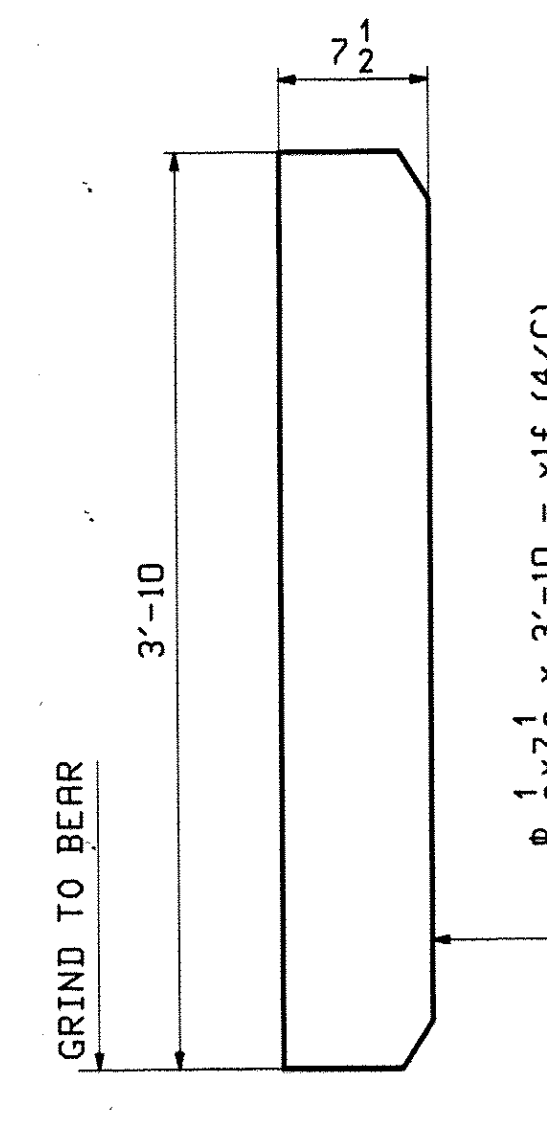
6 ~ CONN. STIFF ~ x1n
W40x149 TO LOW GIRDER
1 1/8" AVG DROP



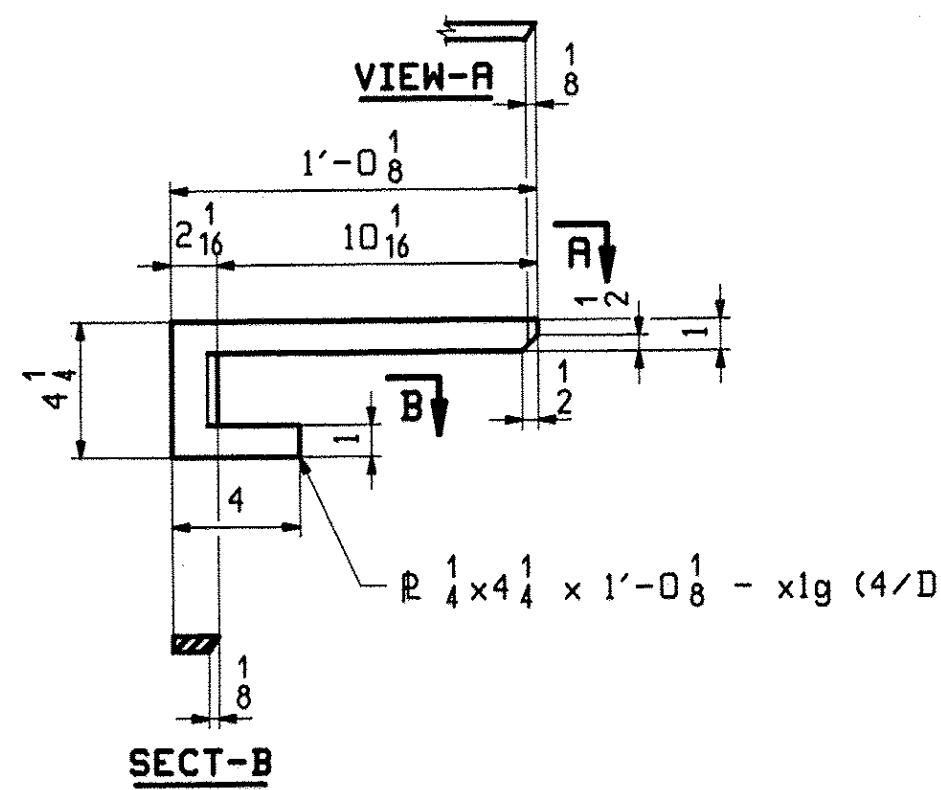
7 ~ CONN. STIFF ~ x1c
W40x149 TO LOW GIRDER
1 1/8" AVG DROP



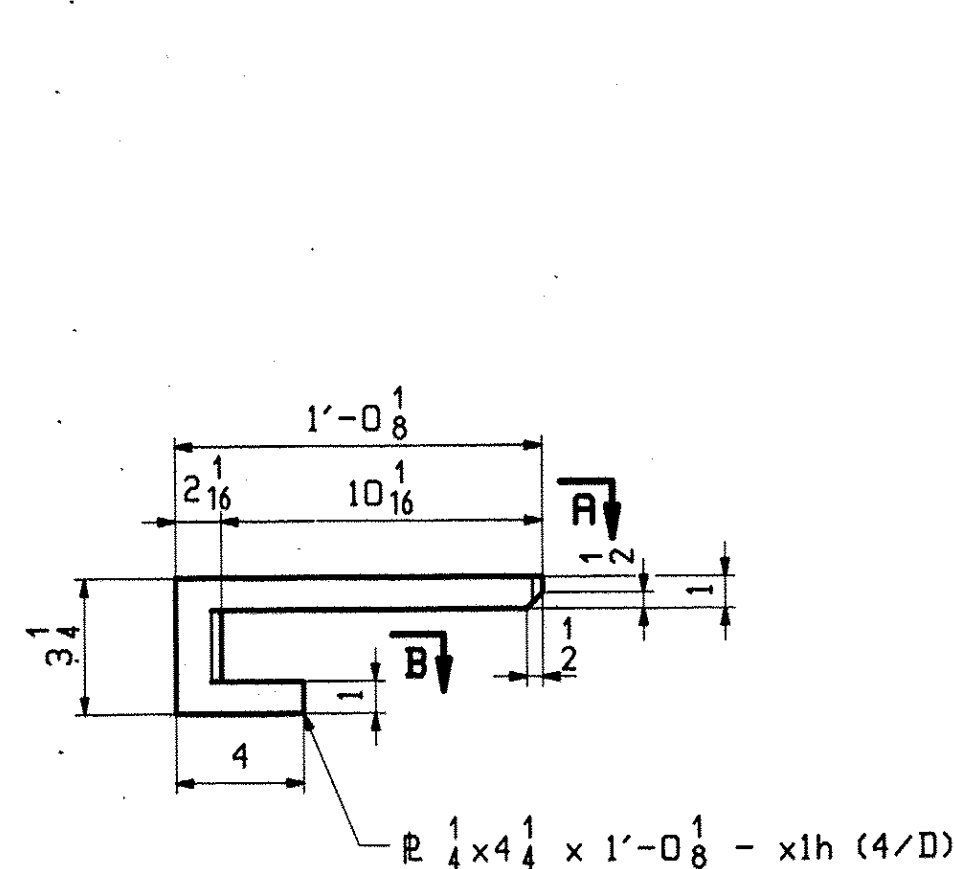
6 ~ CONN. STIFF ~ x1d
W40x149 TO LOW GIRDER
1 1/8" AVG DROP



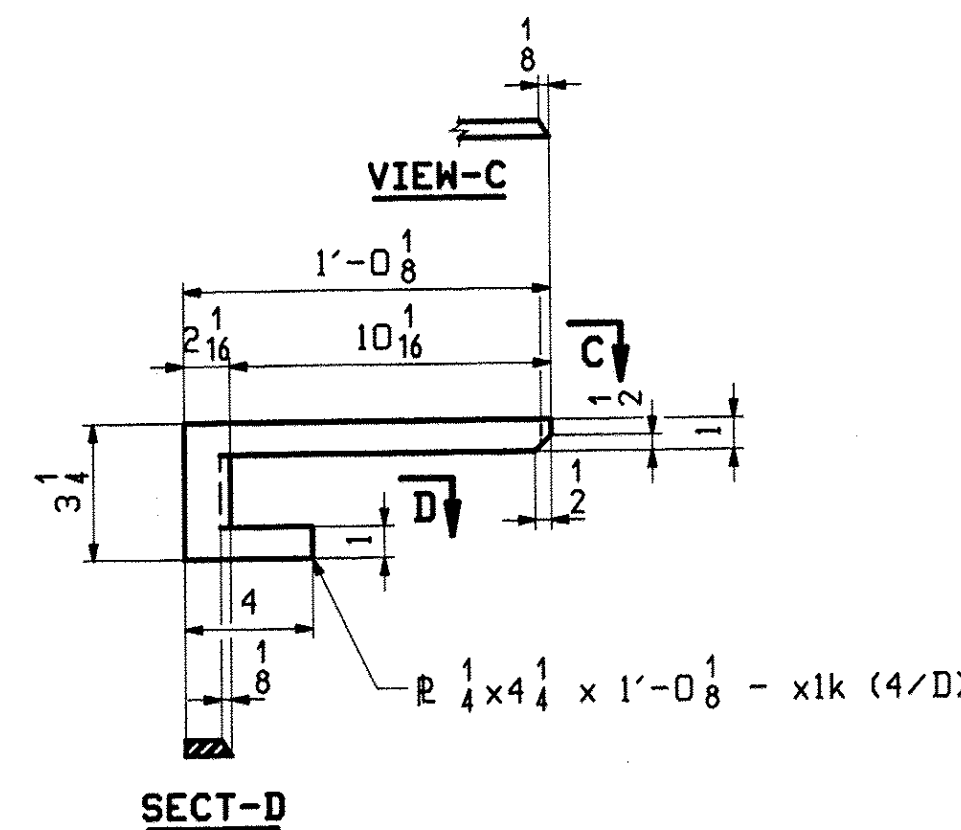
28 ~ BRG STIFF ~ x1f



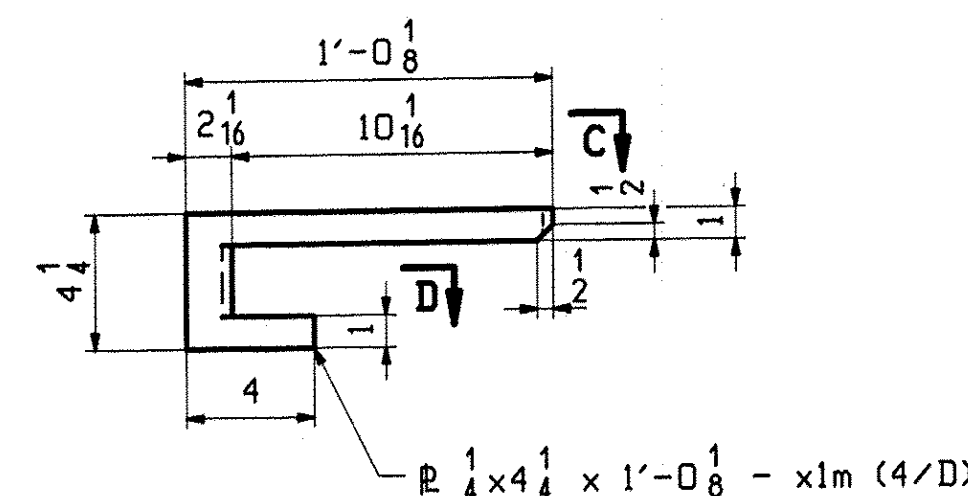
1 ~ DRIP BAR ~ x1g
(M270-GR50W)
LINE G7 NEAR ABUT 2



1 ~ DRIP BAR ~ x1h
(M270-GR50W)
LINE G1 NEAR ABUT 1



1 ~ DRIP BAR ~ x1k
(M270-GR50W)
LINE G1 NEAR ABUT 2



1 ~ DRIP BAR ~ x1m
(M270-GR50W)
LINE G7 NEAR ABUT 1

RECEIVED
DEC 14 2010
APPROVED *As Noted*
BY *CPW* DATE 12/30/10

FOR GENERAL NOTES SEE SHEET GNI

REV.	DATE	REMARKS	DWN	CHK	APVL	SHOP
0						
MATERIAL:		SURFACE PREP. & PAINT:		HOLES:		SHOP BOLTS:
M270-GR50WT2 (U.N)		SSPC-SP6 ¹⁰		15" / 16" Ø		N/A
DESCRIPTION: GIRDER STANDARDS						
CASCO BAY STEEL STRUCTURES, INC. 75 SPRING HILL ROAD SACO, MAINE 04072 PHONE (207) 282-7360 FAX. (207) 282-1179						
STRUCTURE: VT 103 over Middle Branch Williams Rv. Bridge 9 CHESTER County of Windsor			DRAWN:	DATE:		
			TG	11/18		
			CHKD:	DATE:		
			DO	11/30		
LOCATION: Town of Chester			JOB NO.	DWG NO.		
PROJ NO. BRF 025-1(37)			476	X1		
CUSTOMER: Cold River Bridges				REV.	△	