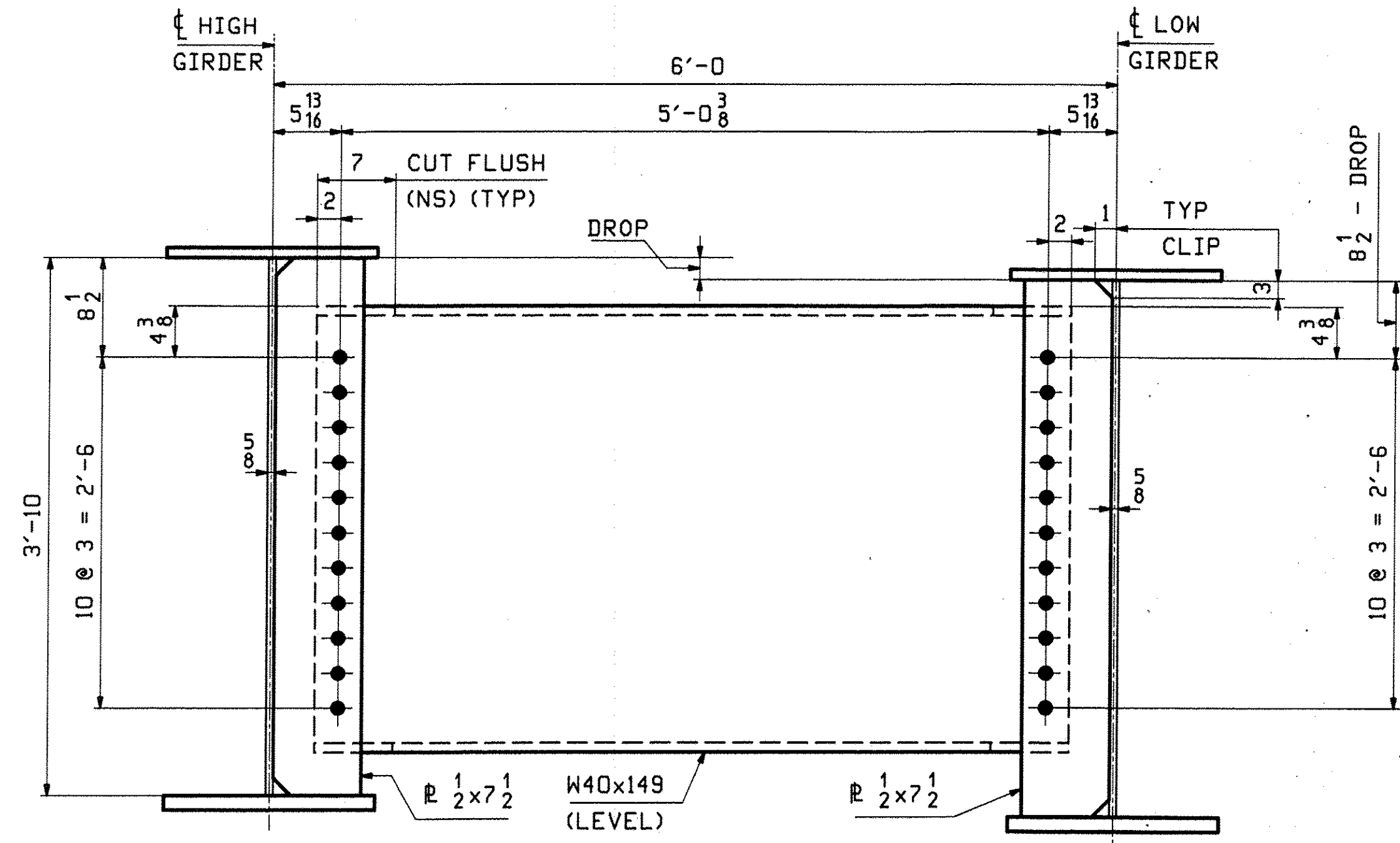


**CALCULATION PLAN**

- NOTES
1. LONGITUDINAL DIMENSIONS ARE SLOPING ALONG BOTT OF WEB WITH CORRECTIONS MADE FOR VERTICAL CURVE, GRADE & DL CAMBER (UN).
  2. TRANSVERSE DIMENSIONS ARE IN A HORIZ. PLANE (UN).
  3. DROP ARROW POINTS TOWARDS LOW END OF MEMBER.
  4. ENDS OF GIRDERS AND BRG. STIFF'S ARE VERTICAL AFTER DL ROTATION.
  5. CF STIFF ARE NORMAL TO GRADE.
  6. BOTT PT NUMBERS = TOP PT NUMBERS + 200.
  7. FOR LAYOUTS SEE TYPICAL LAYOUT BELOW.
  8. COMBINE INT. CROSSFRAMES FOR DIFF IN DROPS OF +/- 1/8
  9. CROSSFRAME DROPS ARE CALCULATED IN THE 70% CAMBERED SHAPE OF THE BRIDGE.

RECEIVED  
 CND BY: EIC DTD BY: RSY  
 DEC 14 2010  
 RESUBMIT APPROVED BY: CPW DATE: 12/30/10

Line	LEN A	GRADE ABUT 1	GRADE ABUT 2
1	121'-0 1/8	.0021	-.0242
2	120'-8 1/4	.0028	-.0234
3	120'-4 9/16	.0035	-.0222
4	120'-1	.0047	-.0217
5	119'-9 9/16	.0055	-.0211
6	119'-6 5/16	.0062	-.0206
7	119'-3	.0068	-.0199



**TYPICAL LAYOUT**

- NOTES:
- ALL FIT-UP MAT'L IS AASHTO M270-GR50WT2
  - ALL HOLES ARE 15/16" FOR 7/8" A325-3 BOLTS

**\*\* NOTE \*\***  
 THE PURPOSE OF THIS DRAWING IS TO COORDINATE GEOMETRIC CONTROL INFORMATION AND CONNECTION SPACING. THIS DWG IS SUBMITTED FOR INFORMATION ONLY & IS NOT INTENDED FOR SHOP FABRICATION. DETAIL DWGS WILL SHOW ALL WELDING AND DIMENSIONS REQ'D FOR FABRICATION.

REV.	DATE	REMARKS	DWN	CHK	APVL	SHOP
0						
MATERIAL:		SURFACE PREP. & PAINT:	HOLES:		SHOP BOLTS:	
			AS NOTED			
DESCRIPTION: CALCULATION PLAN & TYPICAL LAYOUT						
CASCO BAY STEEL STRUCTURES, INC. 75 SPRING HILL ROAD SACO, MAINE 04072 PHONE (207) 282-7360 FAX. (207) 282-1179						
STRUCTURE: VT 103 over Middle Branch Williams Rv. Bridge 9 CHESTER County of Windsor			DRANN:	DATE:		
			TG	11/18		
			CHKD:	DATE:		
			DO	11/29		
LOCATION: Town of Chester			JOB NO.	DWG NO.		
PROJ NO. BRF 025-1(37)			476	WS1		
CUSTOMER: Cold River Bridges				REV.		