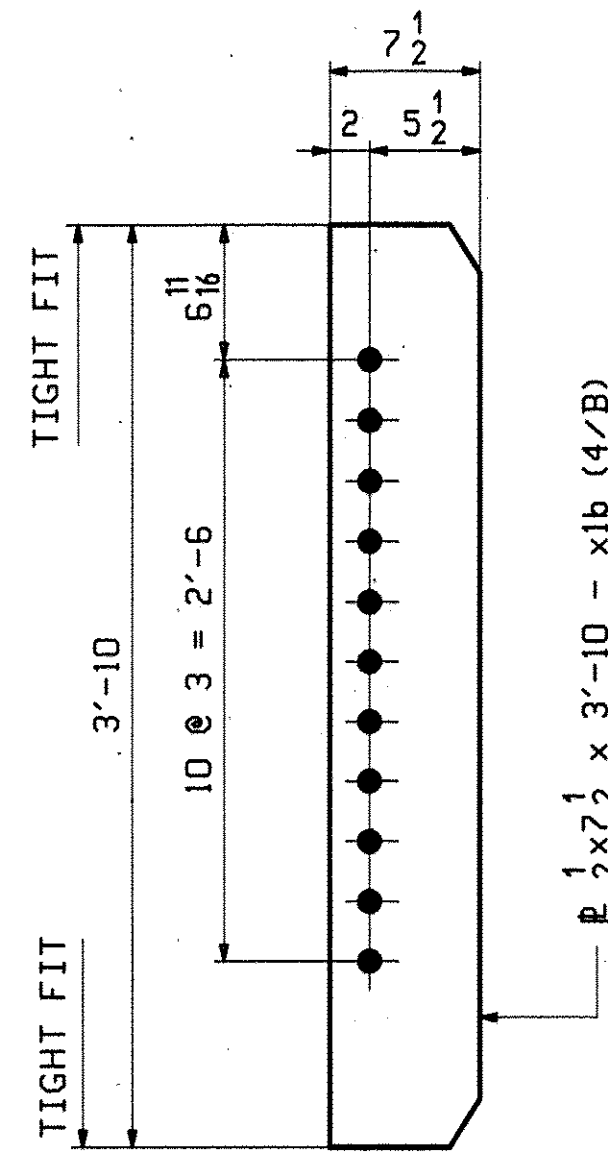


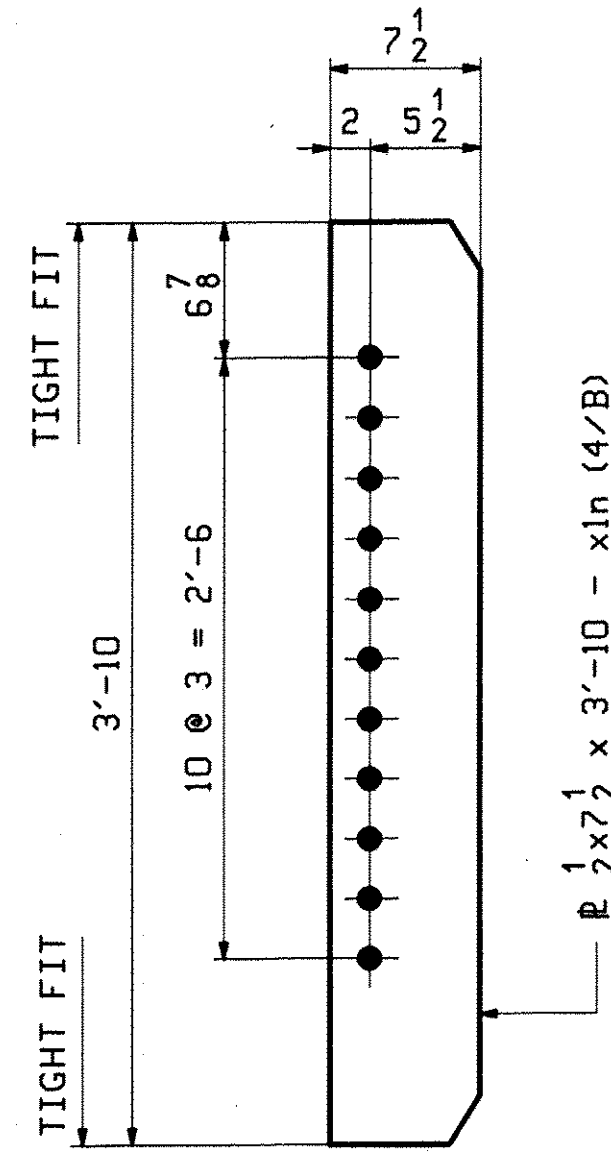
40 ~ CONN. STIFF ~ x1a

W40x149 TO HIGH GIRDER



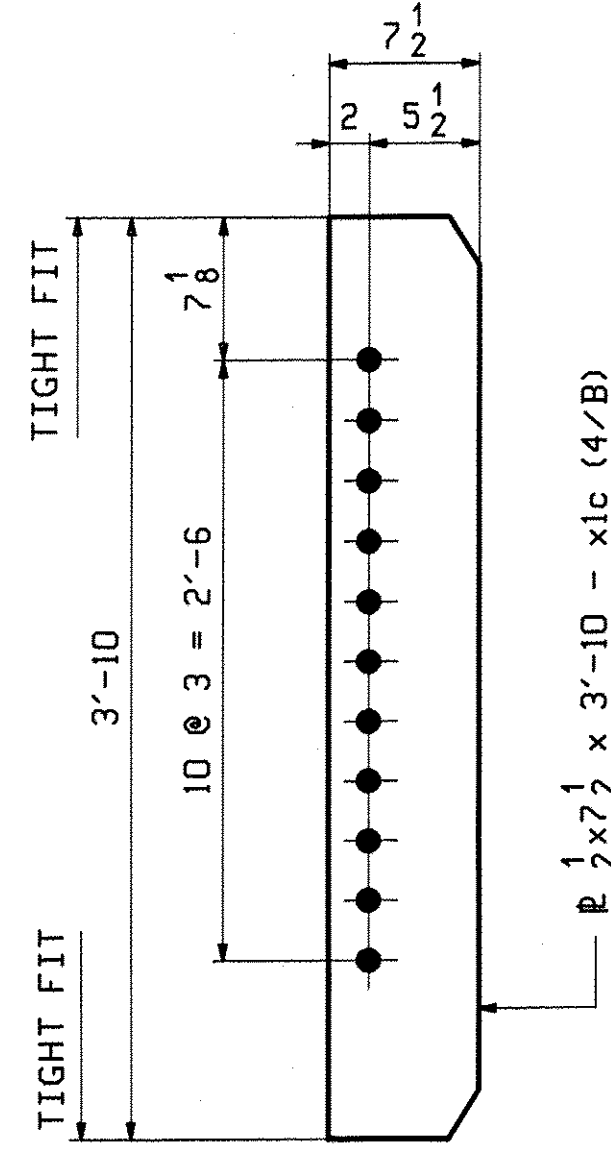
21 ~ CONN. STIFF ~ x1b

W40x149 TO LOW GIRDER
1/8" AVG DROP



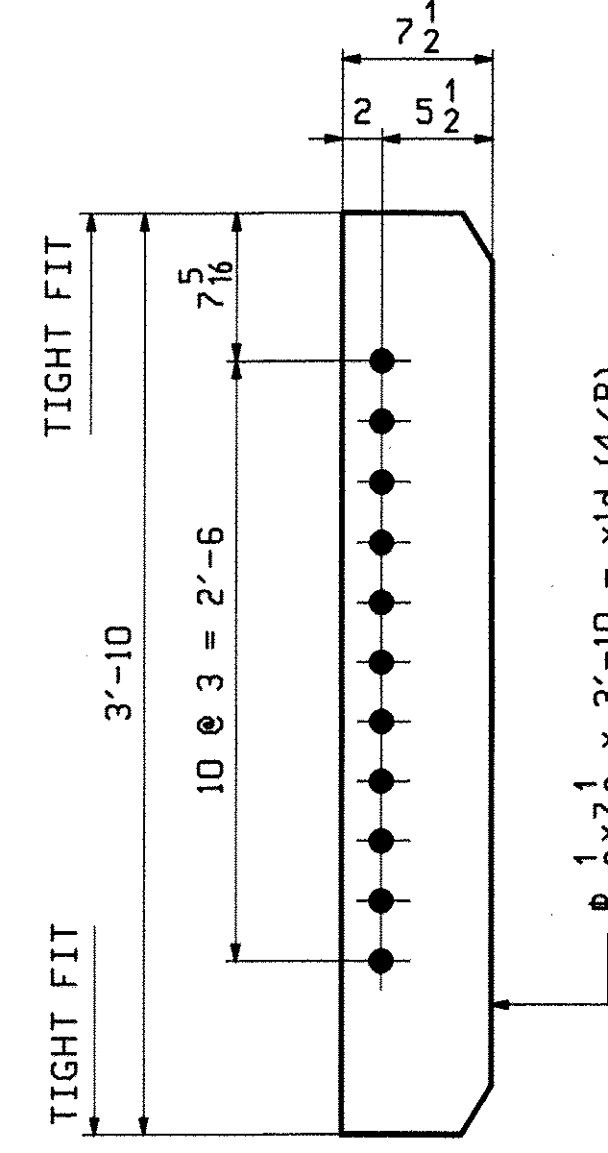
6 ~ CONN. STIFF ~ x1n

W40x149 TO LOW GIRDER
1/8" AVG DROP



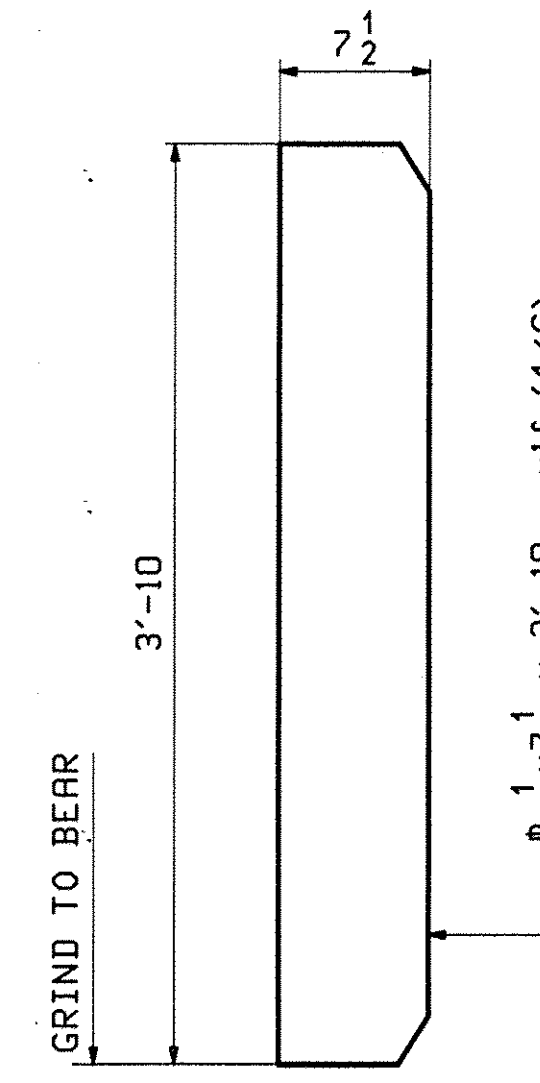
7 ~ CONN. STIFF ~ x1c

W40x149 TO LOW GIRDER
1/8" AVG DROP

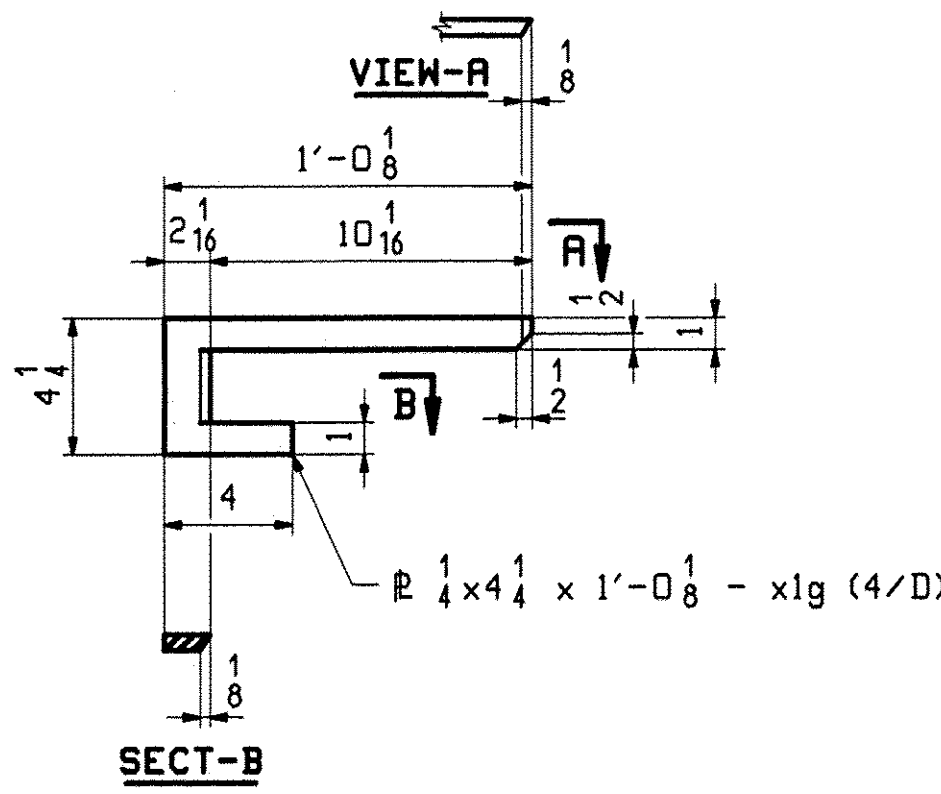


6 ~ CONN. STIFF ~ x1d

W40x149 TO LOW GIRDER
1/8" AVG DROP

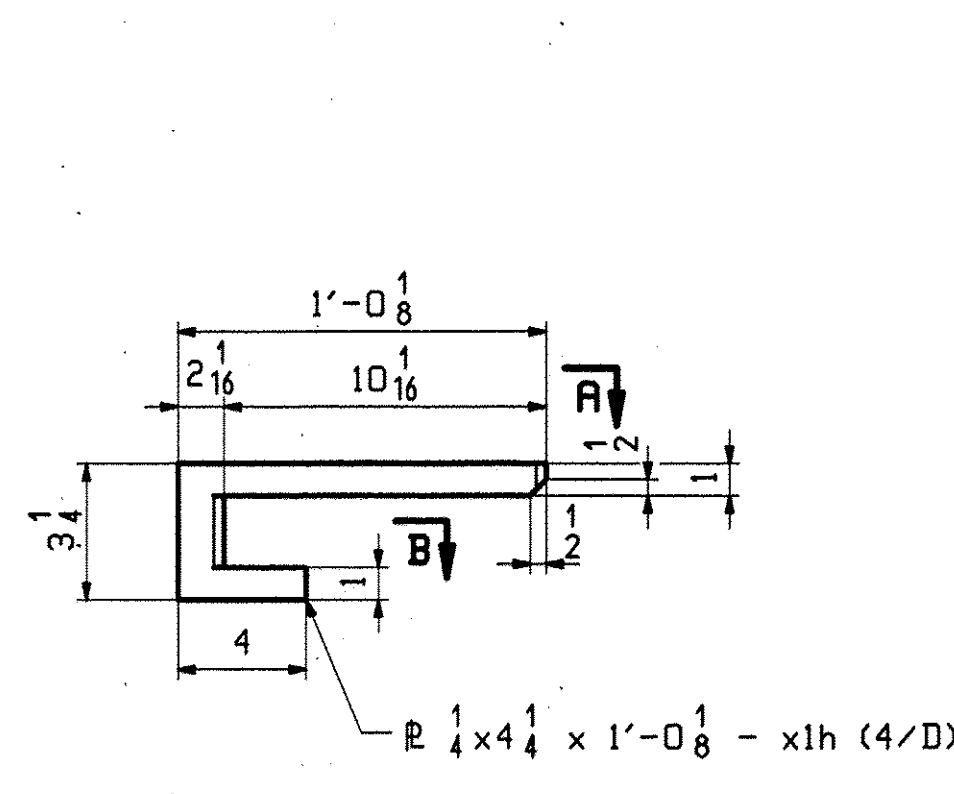


28 ~ BRG STIFF ~ x1f



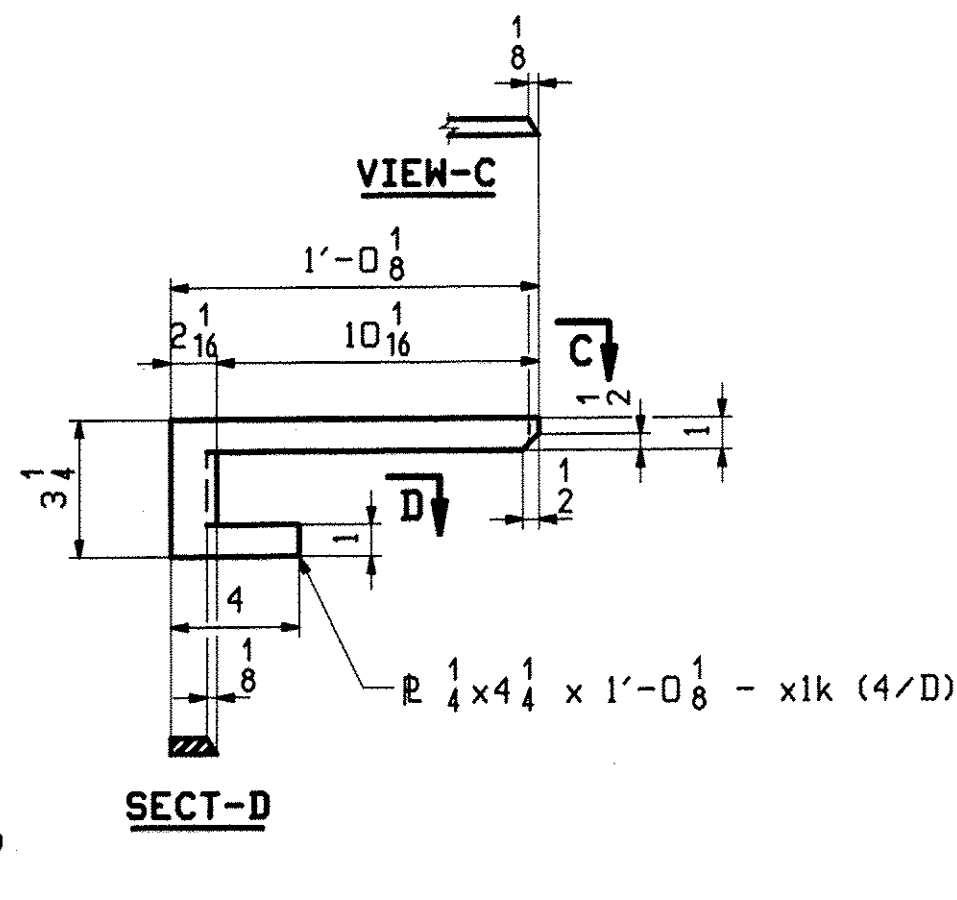
1 ~ DRIP BAR ~ x1g

(M270-GR50W)
LINE G7 NEAR ABUT 2



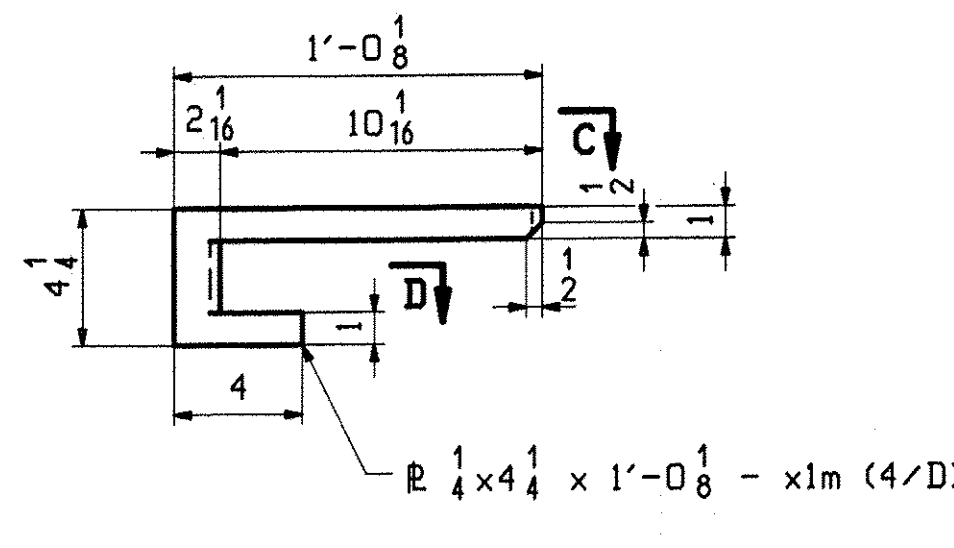
1 ~ DRIP BAR ~ x1h

(M270-GR50W)
LINE G1 NEAR ABUT 1



1 ~ DRIP BAR ~ x1k

(M270-GR50W)
LINE G1 NEAR ABUT 2



1 ~ DRIP BAR ~ x1m

(M270-GR50W)
LINE G7 NEAR ABUT 1

REVISIONS
E.C. R.S.Y.
12/14/2008
APPROVED As Noted
BY CPW Date 12/30/10

FOR GENERAL NOTES SEE SHEET GNI

REV.	DATE	REMARKS	DWN	CHK	APVL	SHOP
0						
MATERIAL:		SURFACE PREP. & PAINT:		HOLES:		SHOP BOLTS:
M270-GR50WT2 (U.N)		SSPC-SP8/0		15- 16" Ø		N/A
DESCRIPTION: GIRDER STANDARDS						
CASCO BAY STEEL STRUCTURES, INC.						
75 SPRING HILL ROAD			SACO, MAINE 04072			
PHONE (207) 282-7360			FAX. (207) 282-1179			
STRUCTURE: VT 103 over Middle Branch Williams Rv.				DRAWN:	DATE:	
Bridge 9				TG	11/18	
CHESTER				CHKD:	DATE:	
County of Windsor				DO	11/30	
LOCATION: Town of Chester					JOB NO.	DWG NO.
PROJ NO. BRF 025-1(37)					476	X1
CUSTOMER: Cold River Bridges					REV.	△