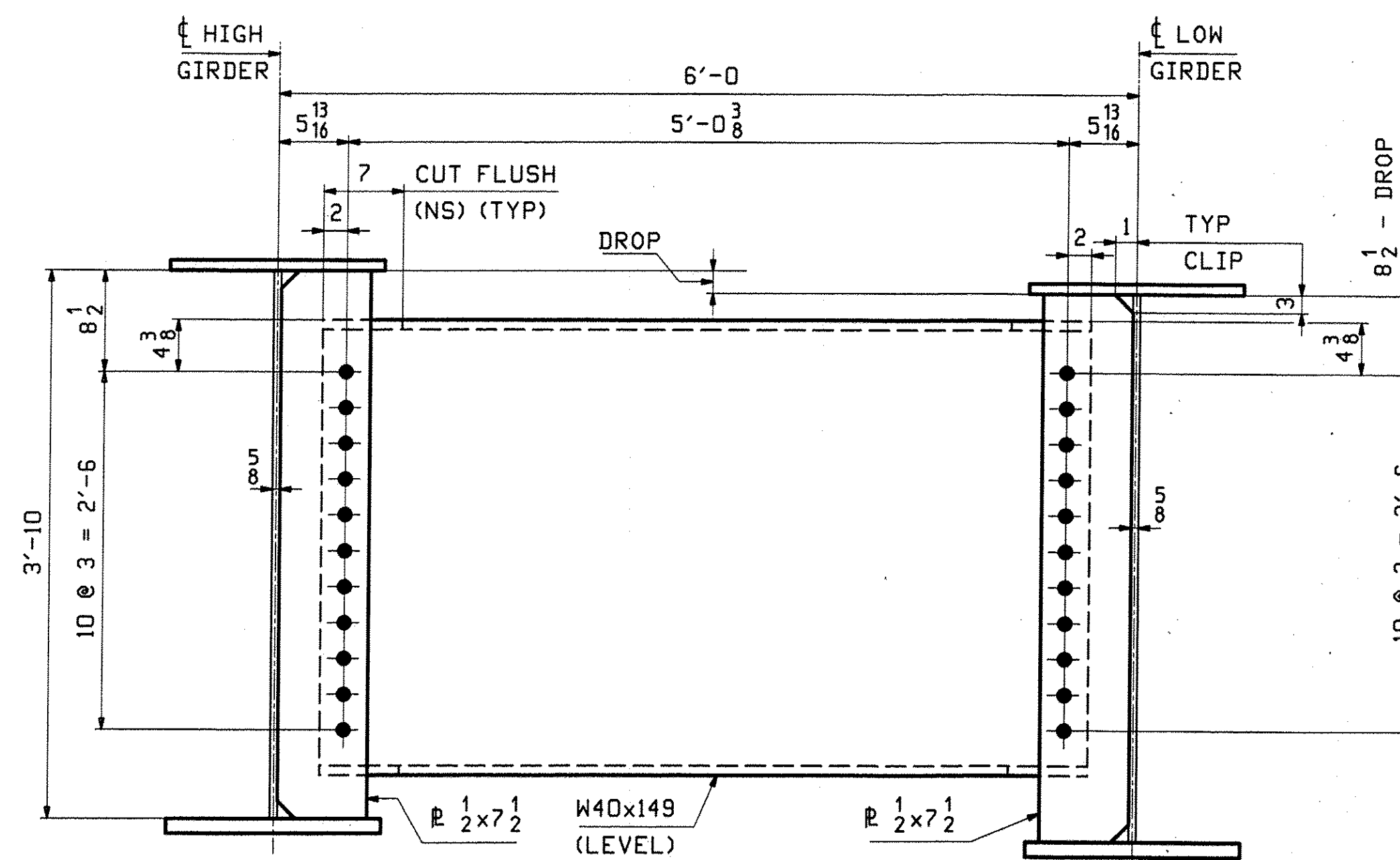


CALCULATION PLAN

NOTES

1. LONGITUDINAL DIMENSIONS ARE SLOPING ALONG BOTT OF WEB WITH CORRECTIONS MADE FOR VERTICAL CURVE, GRADE & DL CAMBER (UN).
2. TRANSVERSE DIMENSIONS ARE IN A HORIZ. PLANE (UN).
3. DROP ARROW POINTS TOWARDS LOW END OF MEMBER.
4. ENDS OF GIRDERS AND BRG. STIFF'S ARE VERTICAL AFTER DL ROTATION.
5. CF STIFF ARE NORMAL TO GRADE.
6. BOTT PT NUMBERS = TOP PT NUMBERS + 200.
7. FOR LAYOUTS SEE TYPICAL LAYOUT BELOW.
8. COMBINE INT. CROSSFRAMES FOR DIFF IN DROPS OF +/- 1/8
9. CROSSFRAME DROPS ARE CALCULATED IN THE 70% CAMBERED SHAPE OF THE BRIDGE.

Line	LEN A	GRADE	
		ABUT 1	ABUT 2
1	121'-0 1/8	.0021	-.0242
2	120'-8 1/4	.0028	-.0234
3	120'-4 9/16	.0035	-.0222
4	120'-1	.0047	-.0217
5	119'-9 9/16	.0055	-.0211
6	119'-6 5/16	.0062	-.0206
7	119'-3	.0068	-.0199



TYPICAL LAYOUT

NOTES:

- ALL FIT-UP MAT'L IS AASHTO M270-GR50WT2
- ALL HOLES ARE 15/16" FOR 7/8" A325-3 BOLTS

**** NOTE ****
 THE PURPOSE OF THIS DRAWING IS TO COORDINATE GEOMETRIC CONTROL INFORMATION AND CONNECTION SPACING. THIS DWG IS SUBMITTED FOR INFORMATION ONLY & IS NOT INTENDED FOR SHOP FABRICATION. DETAIL DWGS WILL SHOW ALL WELDING AND DIMENSIONS REQ'D FOR FABRICATION.

REV.	DATE	REMARKS	DWN	CHK	APVL	SHOP
0						
MATERIAL:		SURFACE PREP. & PAINT:		HOLES:		SHOP BOLTS:
				AS NOTED		
DESCRIPTION: CALCULATION PLAN & TYPICAL LAYOUT						
CASCO BAY STEEL STRUCTURES, INC. 75 SPRING HILL ROAD SACO, MAINE 04072 PHONE (207) 282-7360 FAX. (207) 282-1179						
STRUCTURE: VT 103 over Middle Branch Williams Rv. Bridge 9 CHESTER County of Windsor			DRAWN:	DATE:		
			TG	11/18		
LOCATION: Town of Chester			CHKD:	DATE:		
			DO	11/29		
PROJ NO. BRP 025-1(37)			JOB NO.	DWG NO.		
CUSTOMER: Cold River Bridges			476	WS1		
			REV.	△		

00 P:\11\11_3_2010 00:25:03 PM c:\users\jhu\appdata\local\temp\...