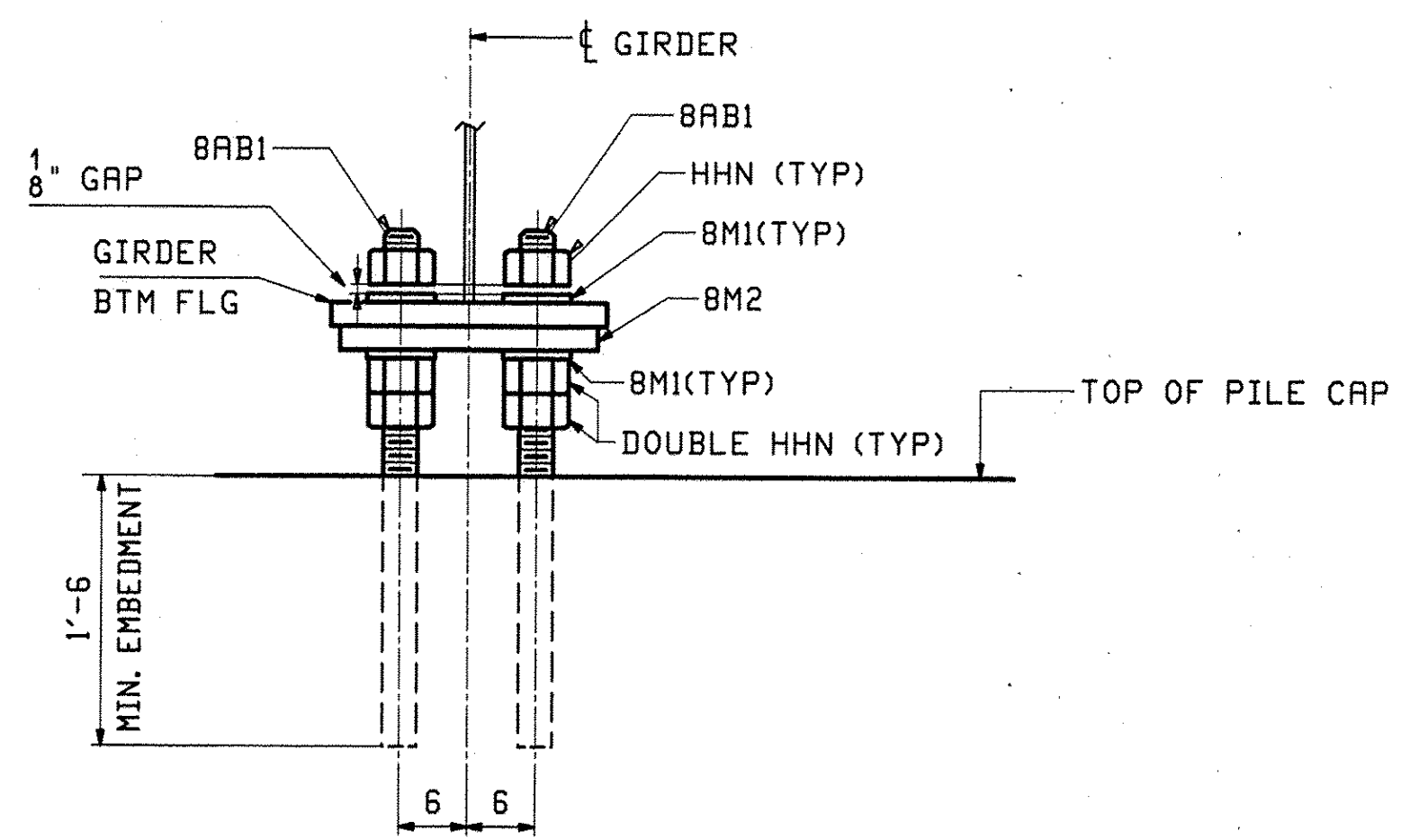


FRAMING PLAN
ANCHOR BOLT PLAN

FIELD BOLT LIST		A325 Type 3 BOLTS				VTE RTE 103			
LINE	NO. REQ'D.	BOLT DIAM.	BOLT LEN.	BOLTS # OF CONN.	GRIP	THICKNESS OF PCS. CONNECTED	WASH CODE	PIECES CONNECTED AND REMARKS	
1									
2	880	7/8	2 1/2	11	80	1 1/2	5/8		1 CONN. STIFF TO W40X149
3									

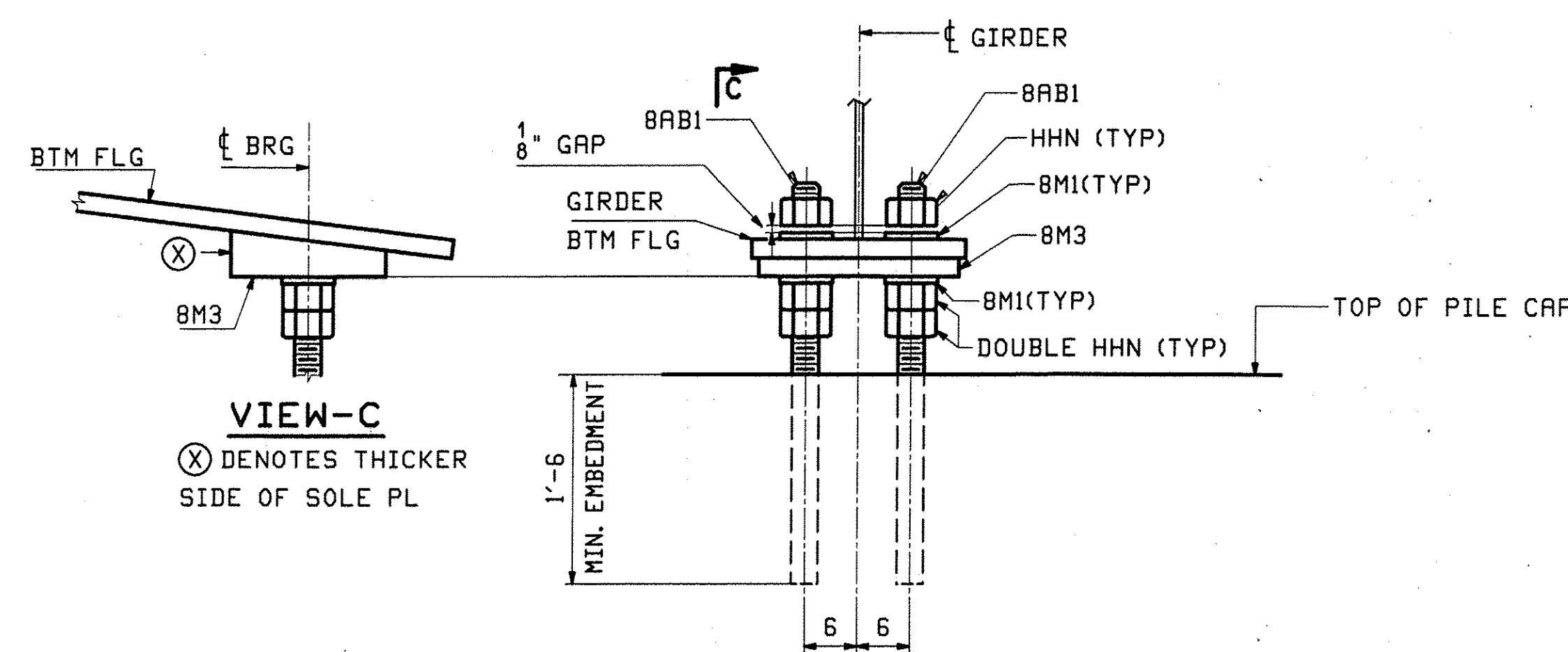
WASHER CODES
1: 1 Hard Flat Washer

FIELD BOLT SUMMARY		EXACT COUNT		VTE RTE 103	
LINE	NO. OF BOLTS	BOLT DIAM.	BOLT LEN.	ACTUAL COUNT	REMARKS
1	880	7/8	A325 Type 3	2 1/2	880
2					
3	880	Hard Flat Washers for 7/8" BOLT			
4					
5					
6					



SECTION - A

NOTE: GREASE TOP OF SOLE PL BEFORE GIRDER PLACEMENT



SECTION - B

NOTE: GREASE TOP OF SOLE PL BEFORE GIRDER PLACEMENT

VIEW-C
⊗ DENOTES THICKER SIDE OF SOLE PL

REV.	DATE	REMARKS	DWN	CHK	APVL	SHOP
0						
MATERIAL:		SURFACE PREP. & PAINT:	HOLES:		SHOP BOLTS:	
DESCRIPTION: FRAMING PLAN & ANCHOR BOLT PLAN						
CASCO BAY STEEL STRUCTURES, INC. 75 SPRING HILL ROAD SACO, MAINE 04072 PHONE (207) 282-7360 FAX. (207) 282-1179						
STRUCTURE: VT 103 over Middle Branch Williams Rv. Bridge 9 CHESTER County of Windsor			DRAWN: TG	DATE: 11/18		
LOCATION: Town of Chester			CHKD: DO	DATE: 12/02		
PROJ NO. BRF 025-1(37)			JOB NO. 476		DWG NO. E1	
CUSTOMER: Cold River Bridges					REV. Δ	

12/30/10
 CPW
 12/30/10