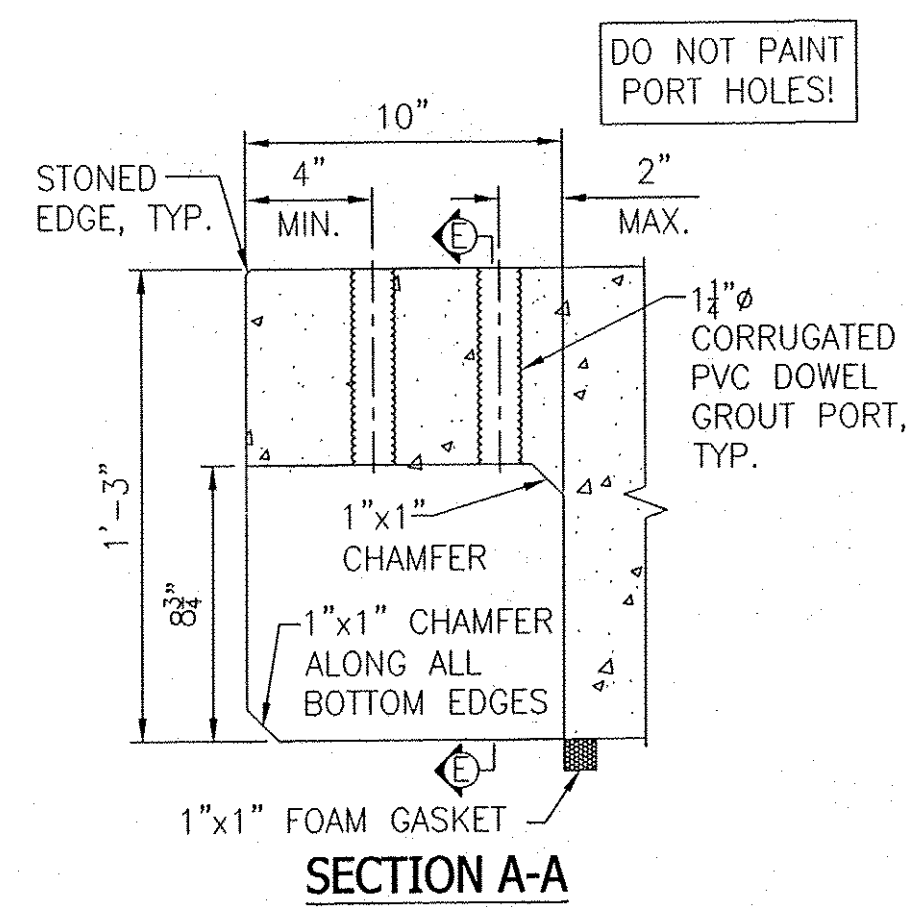
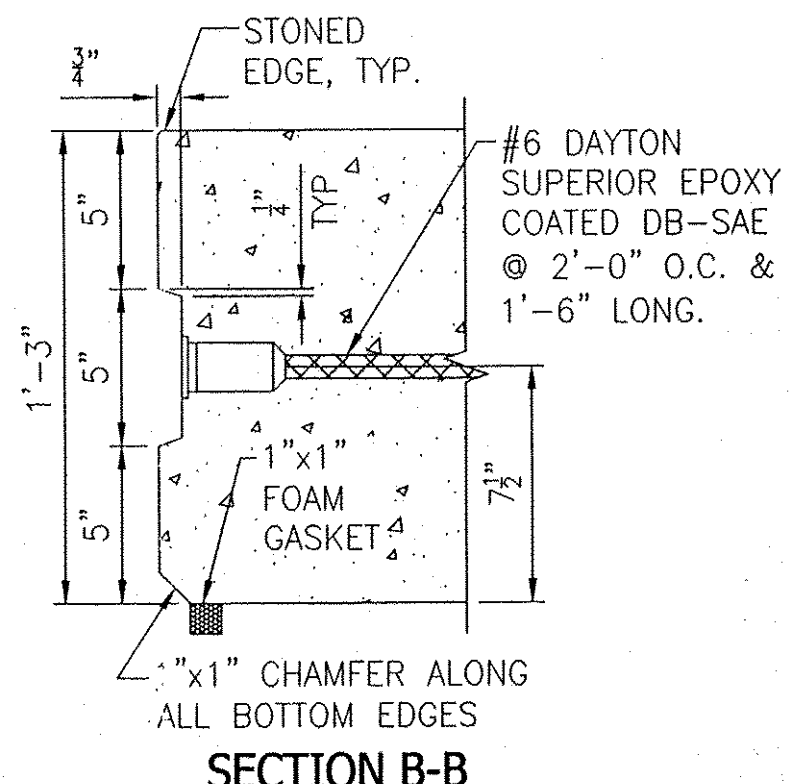


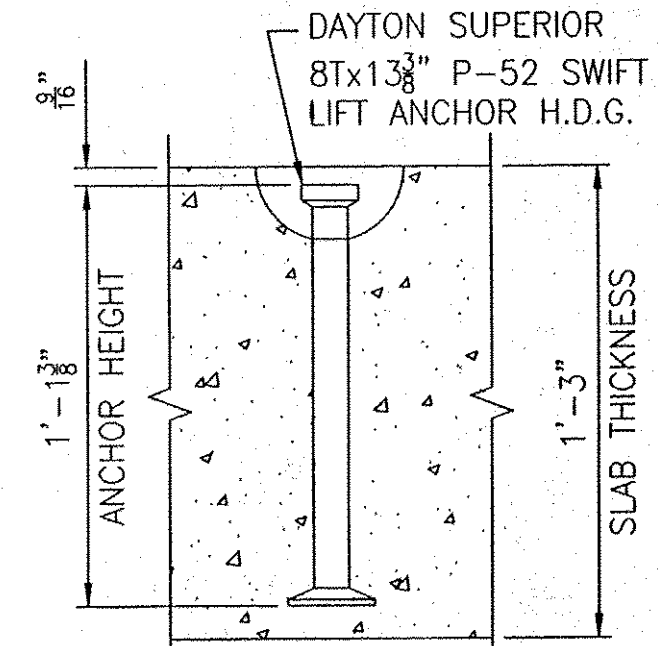
PLAN VIEW
GROUT CHANNEL & GASKET LAYOUT



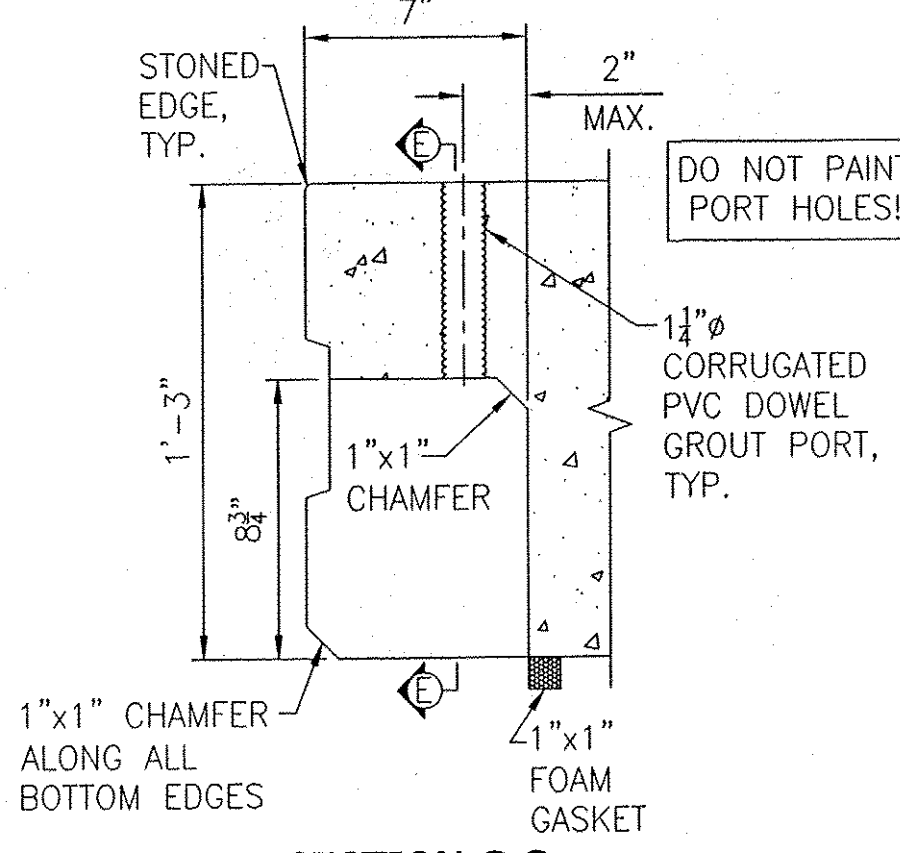
SECTION A-A



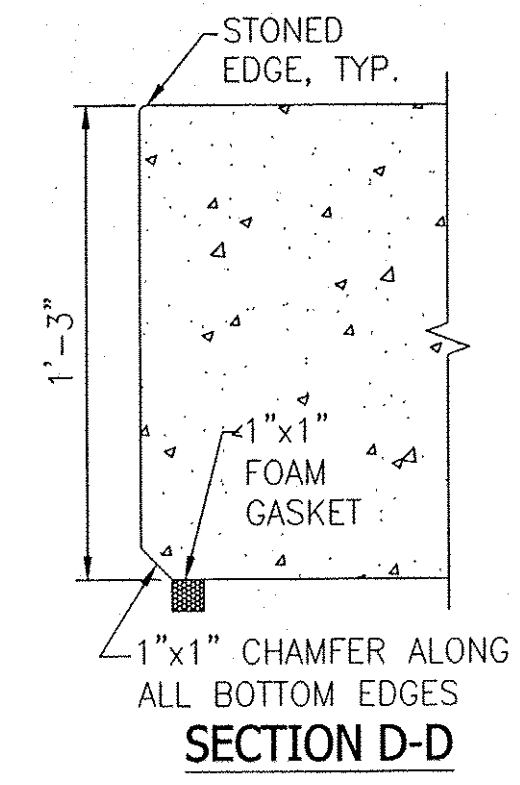
SECTION B-B



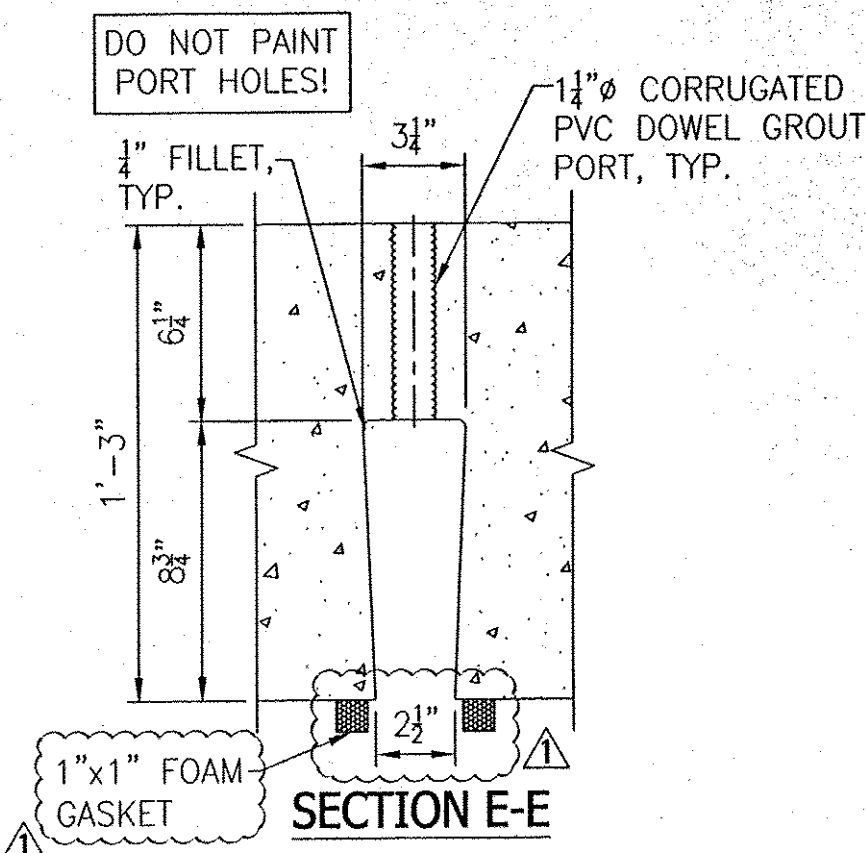
LIFTING SECTION DETAIL



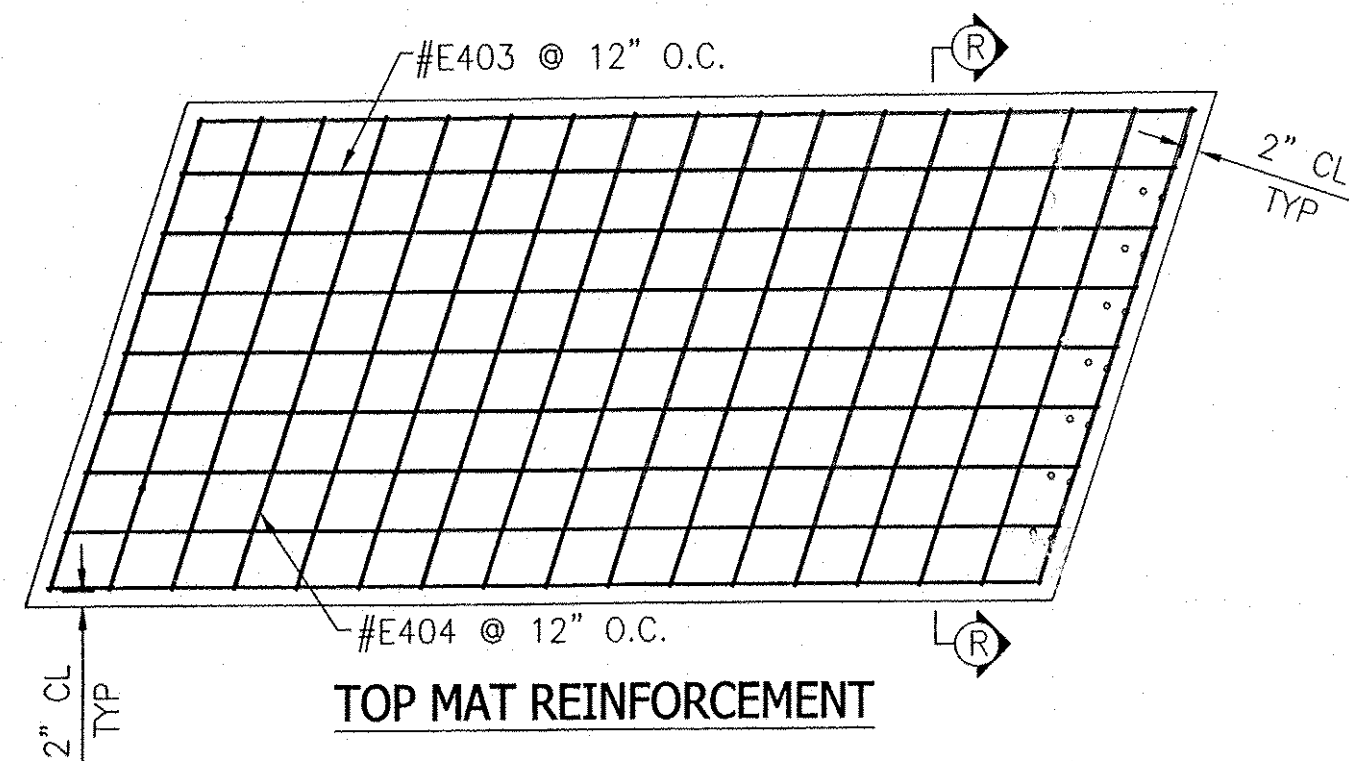
SECTION C-C



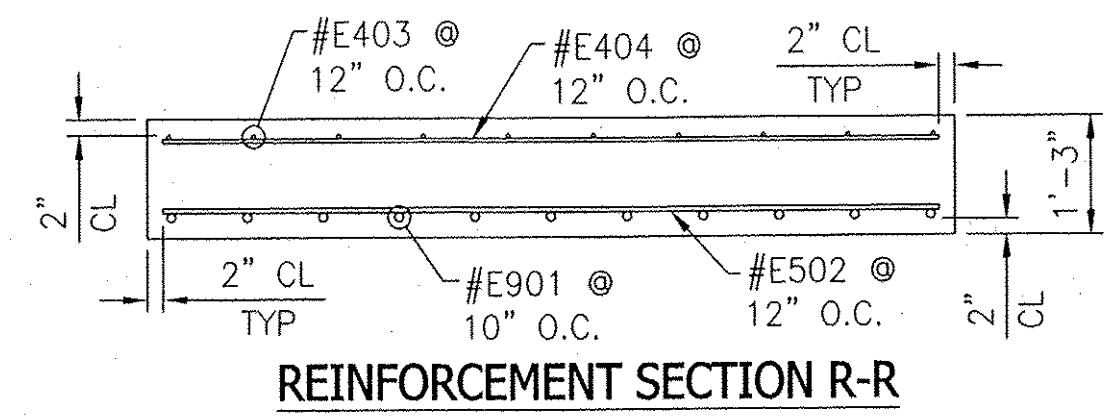
SECTION D-D



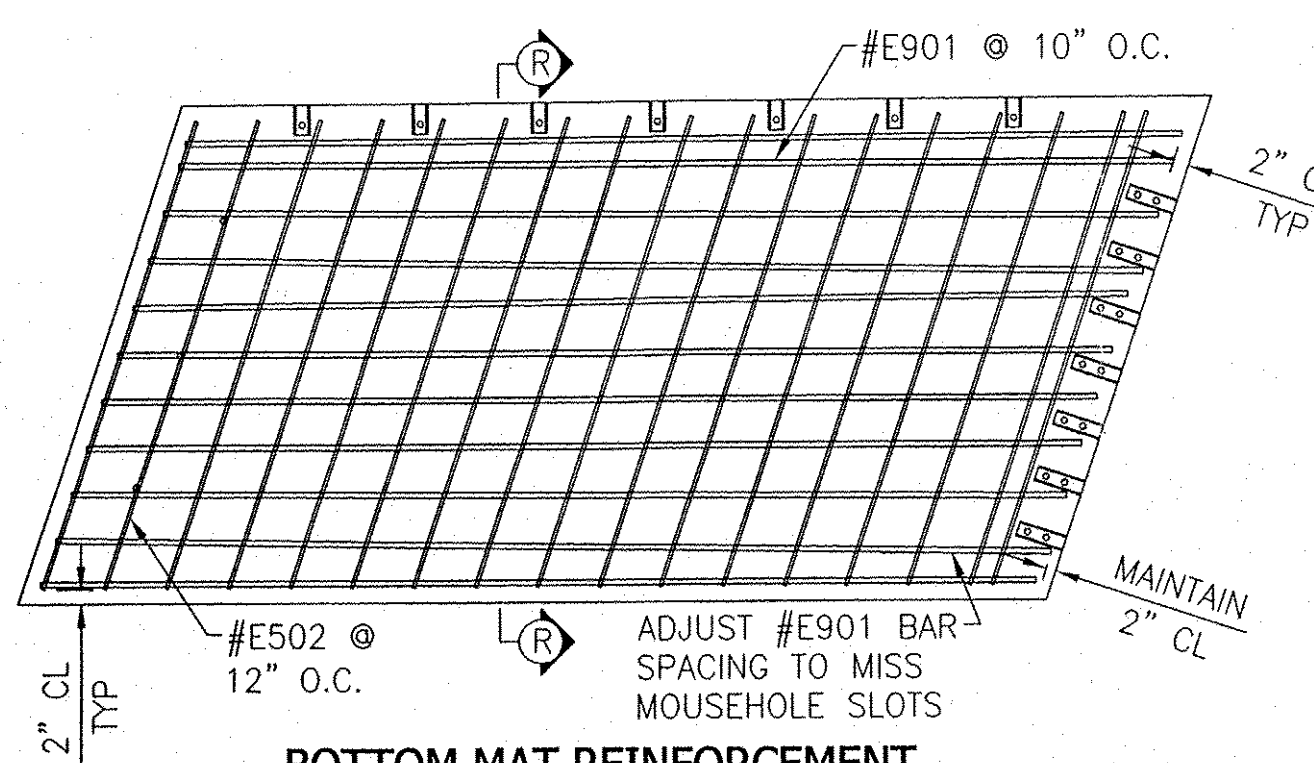
SECTION E-E



TOP MAT REINFORCEMENT



REINFORCEMENT SECTION R-R



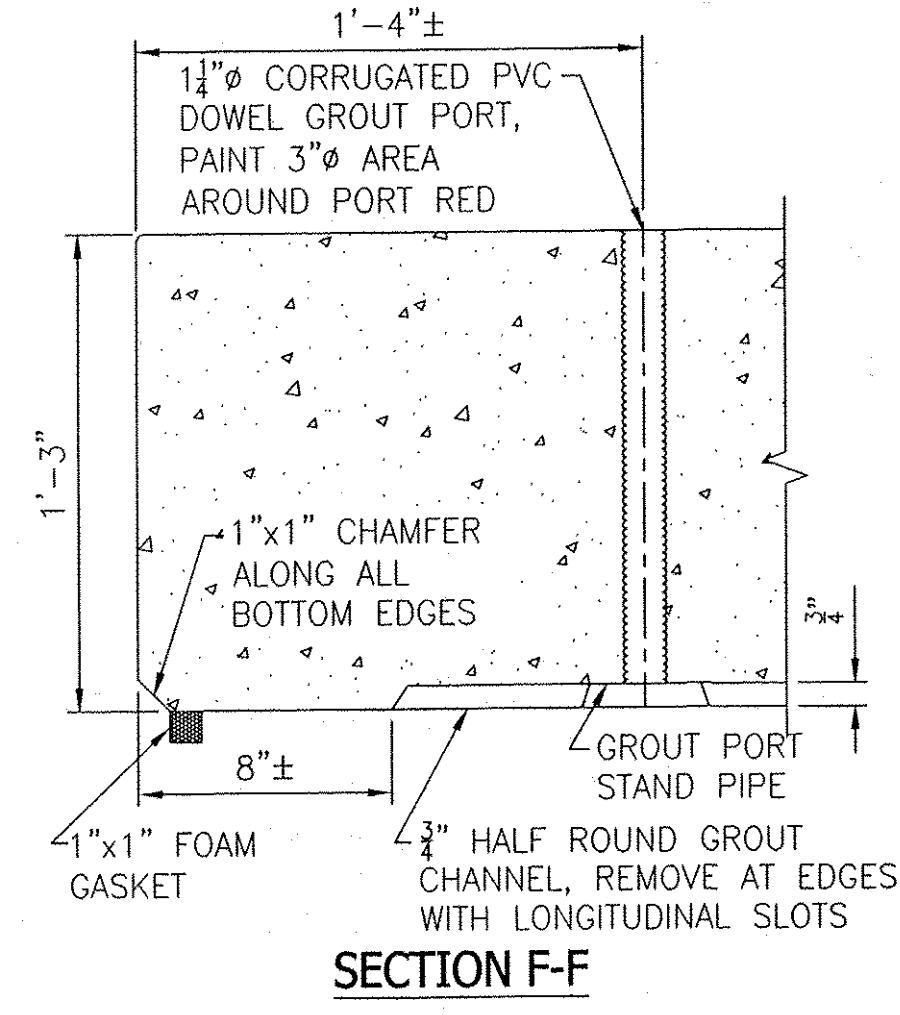
BOTTOM MAT REINFORCEMENT

DO NOT TRIM #E901 BAR SHORTER THAN 2" CL COVER, SKEW BAR TO FIT PAST MOUSEHOLES

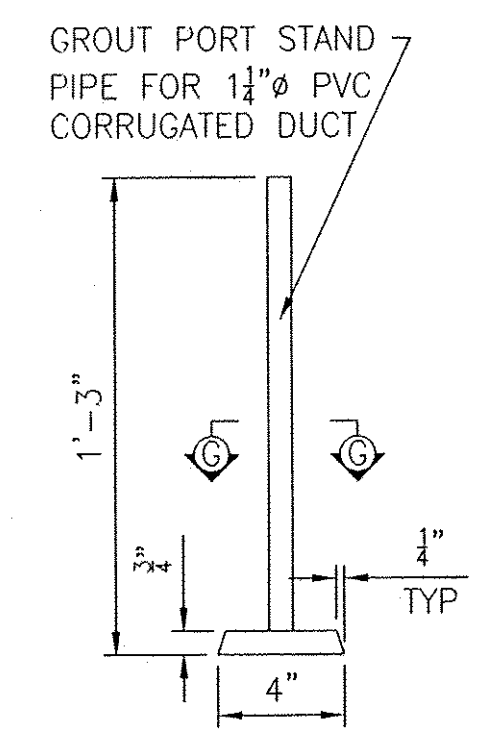
REINFORCEMENT SECTION

	E901		E502		E403		E404	
	QTY	LENGTH	QTY	LENGTH	QTY	LENGTH	QTY	LENGTH
S9-1	11	17' 0"	18	8' 11 1/2"	10	17' 0"	18	8' 11 1/2"
S9-2	11	17' 0"	18	8' 11 1/2"	10	17' 0"	18	8' 11 1/2"
S9-3	11	17' 0"	18	8' 11 1/2"	10	17' 0"	18	8' 11 1/2"
S9-4	11	17' 0"	18	8' 11 1/2"	10	17' 0"	18	8' 11 1/2"
S9-5	11	19' 3 1/4"	18	9' 10"	10	19' 3 1/4"	18	9' 10"
S9-6	11	19' 3 1/4"	18	9' 10"	10	19' 3 1/4"	18	9' 10"
S9-7	11	19' 3 1/4"	18	9' 10"	10	19' 3 1/4"	18	9' 10"
S9-8	11	19' 3 1/4"	18	9' 10"	10	19' 3 1/4"	18	9' 10"

ALL REINFORCEMENT IS EPOXY COATED.

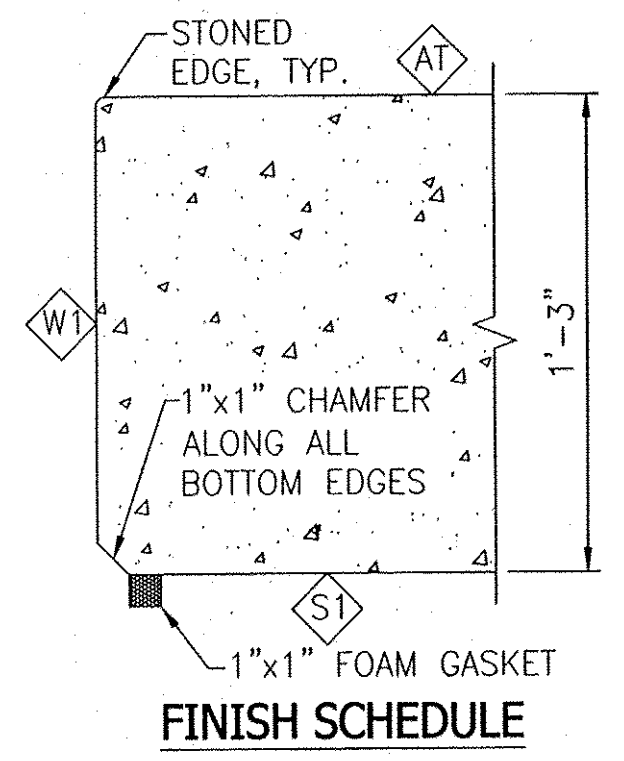


SECTION F-F



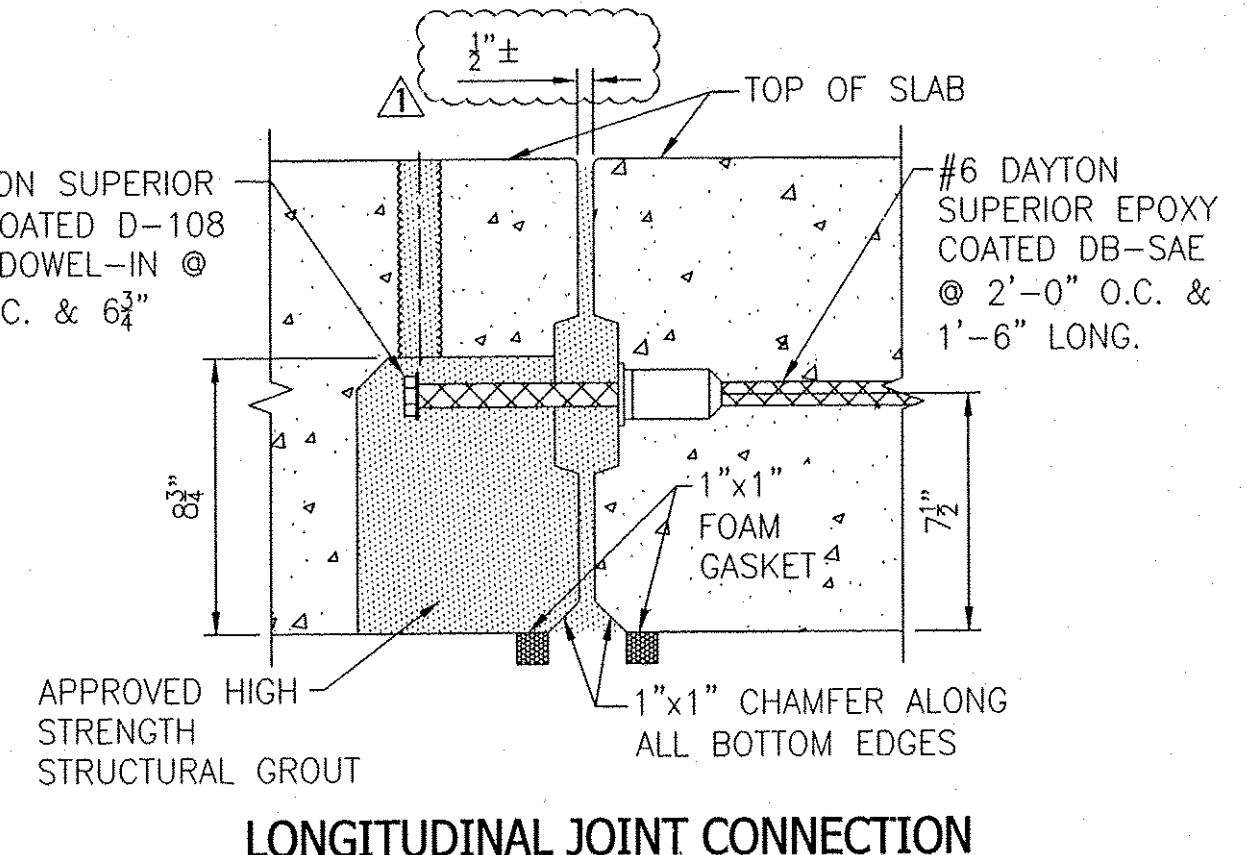
SECTION H-H

THIS DETAIL MAY BE DELETED OR REVISED AT THE DISCRETION OF FM PLANT ENGINEER.

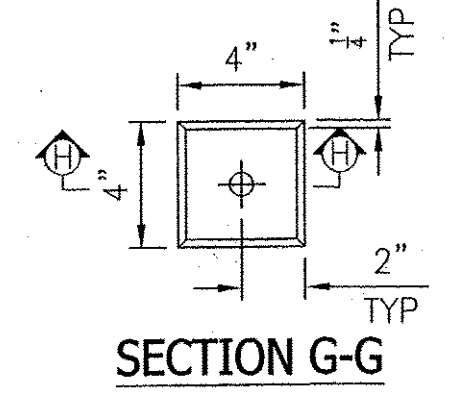


FINISH SCHEDULE

- W1 = WOOD FORM FINISH
- S1 = STEEL FORM FINISH
- AT = ASTRO-TURF FINISH TRANSVERSE TO TRAFFIC



LONGITUDINAL JOINT CONNECTION



SECTION G-G

RECEIVED
MAR 29 2011
APPROVED
DATE 3/30/11

NO.	DATE	BY	REVISIONS
3-23-11	TDS	PER ENG. COMMENTS	

F.M. JOB NO. 12511

DATE: 2-16-11
DRN. BY: TDS
CHK. BY: SDH
SCALE: NONE
SHEET NO. 4 OF 4

CONTRACTOR: COLD RIVER BRIDGES, LLC.
CONTRACTOR ADDRESS: PO BOX 1076 WALPOLE, NH 03608
ENGINEER/ARCHITECT: VAOT

THE FORT MILLER Co., Inc.
P.O. BOX 98
SCHUYLERVILLE, NY 12871
(518) 695-5000
(518) 695-4970 FAX
WWW.FORTMILLER.COM

DWG. NO. P4