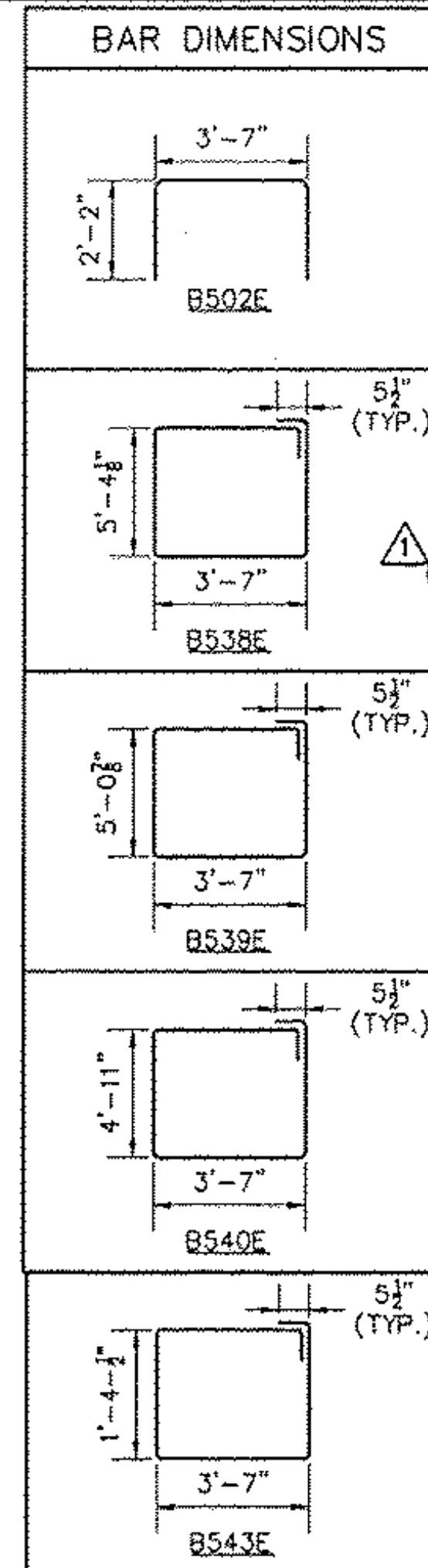
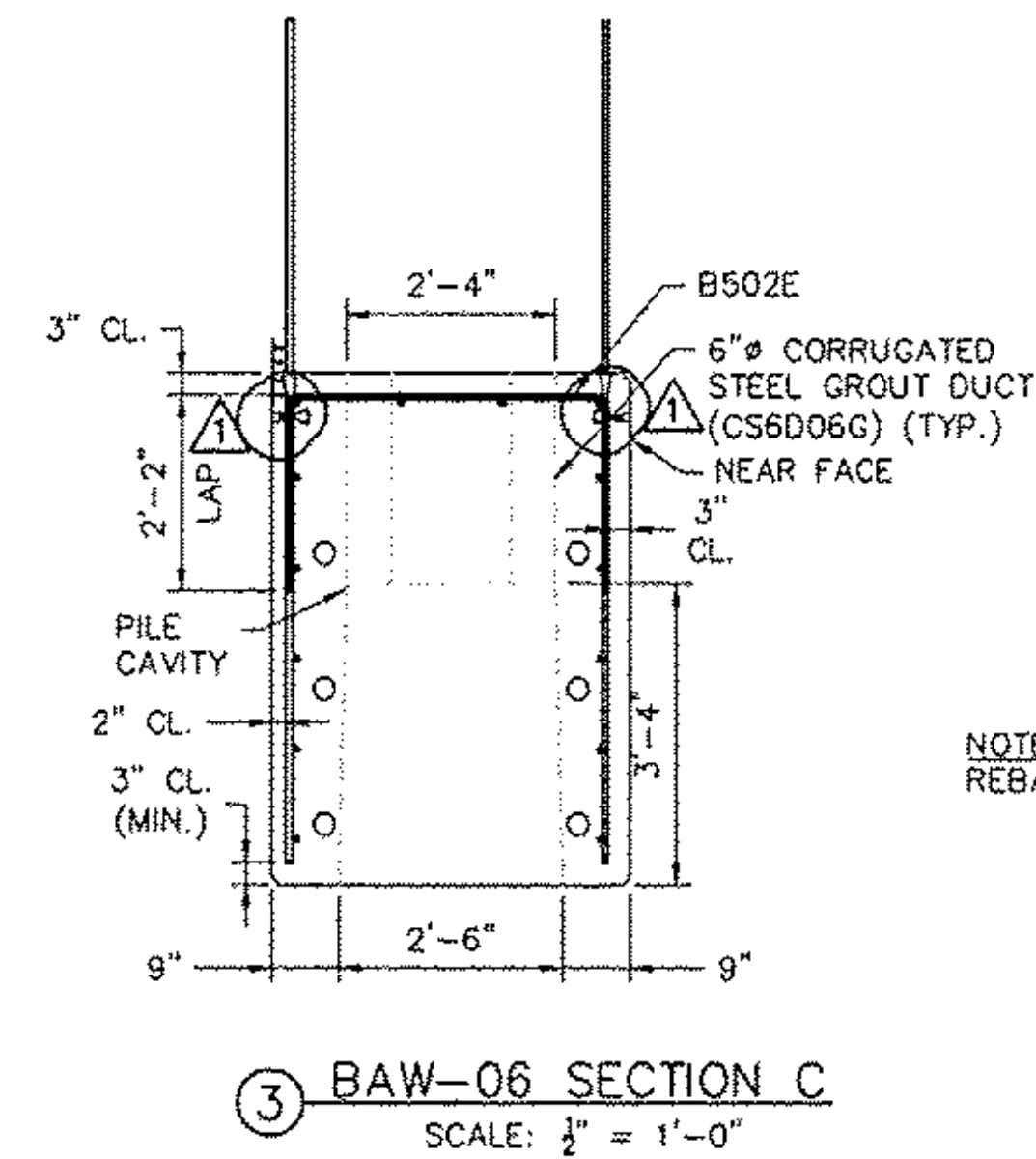
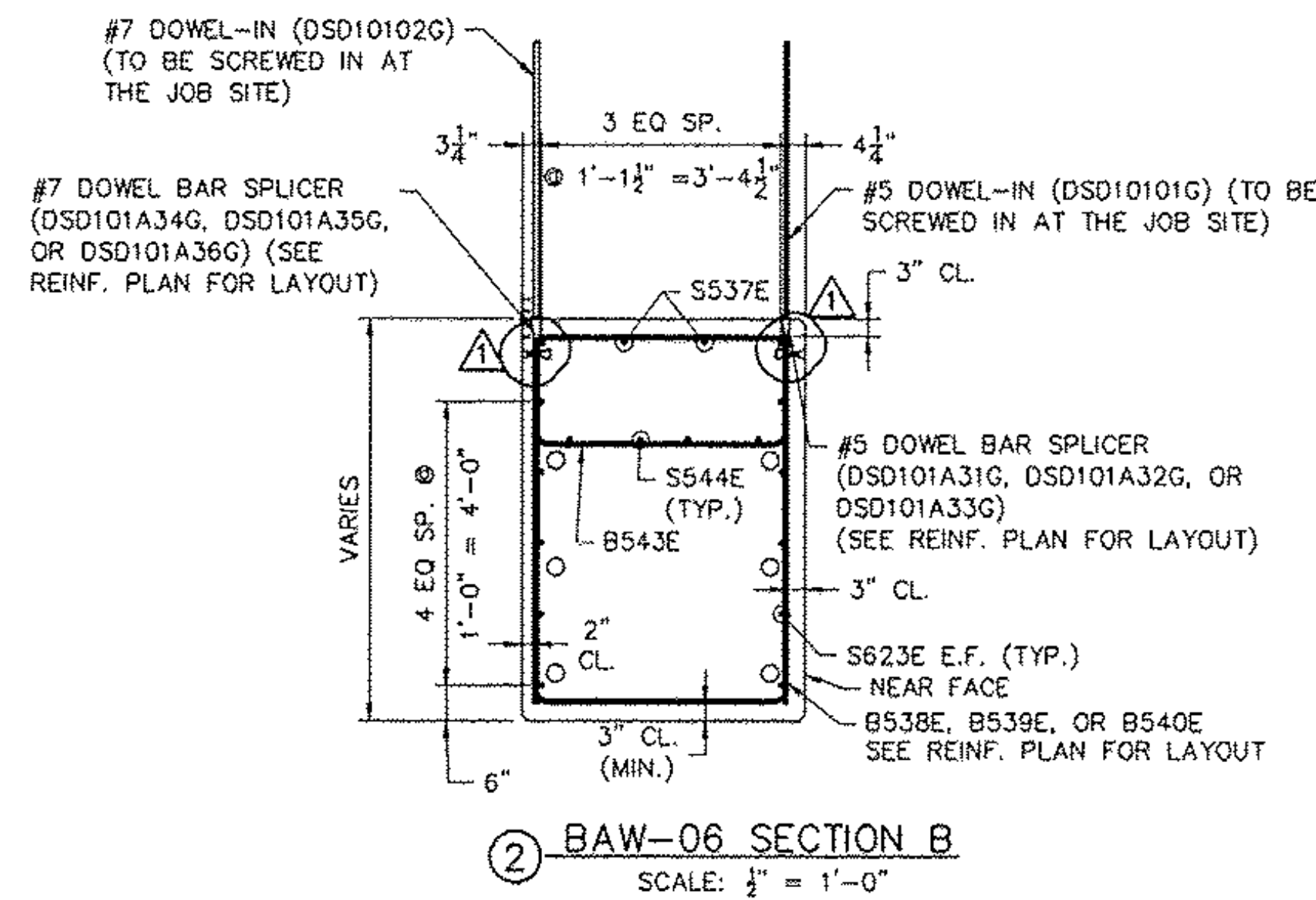
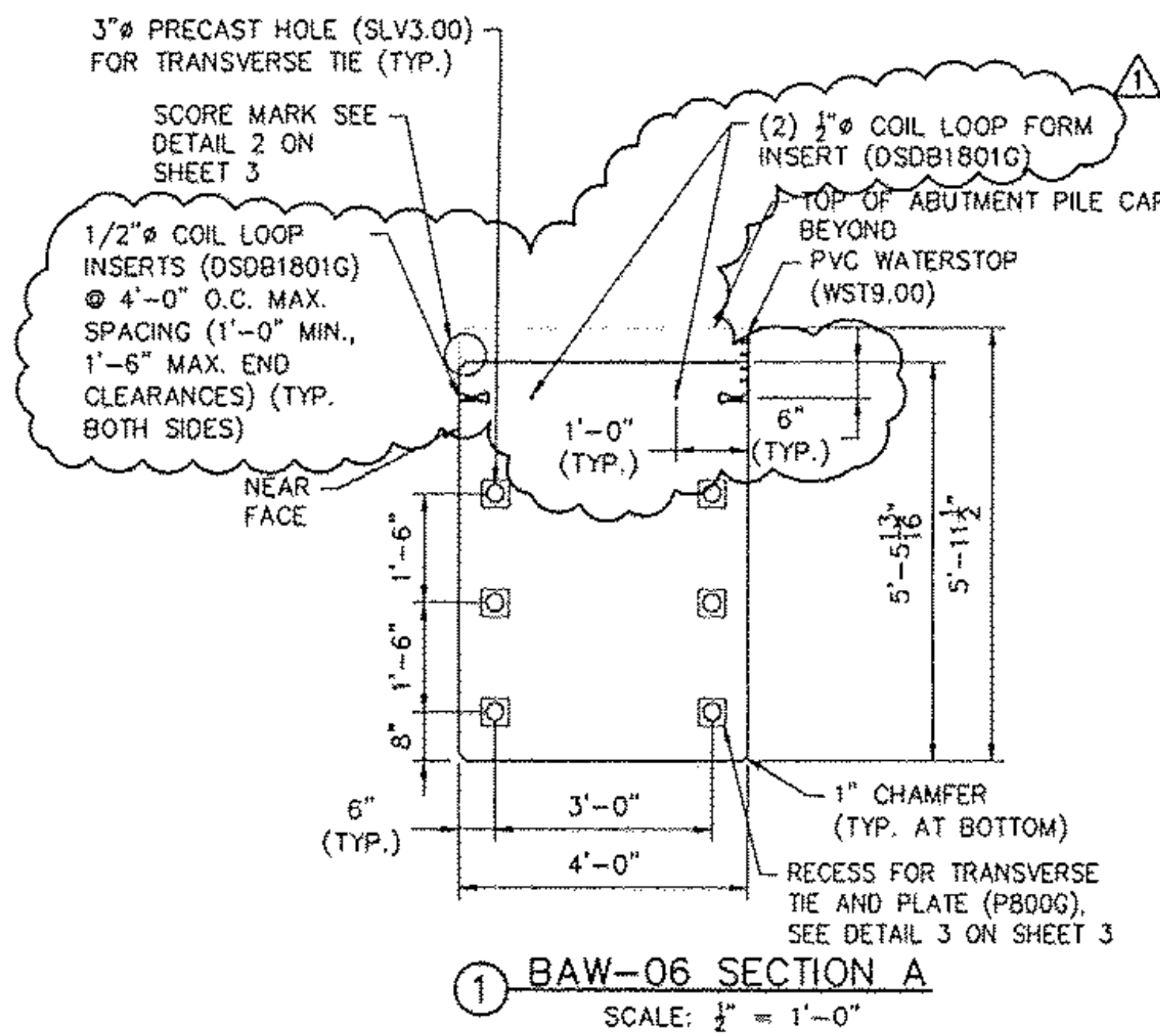


RECEIVED  
OK'D BY LJS OK'D BY RSY

MAR 11 2011

RESUBMIT APPROVED As Noted  
BY CPW DATE 3/28/11



PARTS & PART NUMBERS		
PART NO.	DESCRIPTION	QTY.
B502E	#5 X 7'-11" EPOXY COATED	4
S623E	#6 X 16'-10 1/2" EPOXY COATED	12
S537E	#5 X 17'-0" EPOXY COATED	2
B538E	#5 X 18'-9 1/2" EPOXY COATED	5
B539E	#5 X 18'-2 1/2" EPOXY COATED	8
B540E	#5 X 17'-11" EPOXY COATED	2
B543E	#5 X 11'-5" EPOXY COATED	6
S544E	#5 X 7'-1 1/2" EPOXY COATED	4
DSD1801G	1/2" Ø, 4" LONG, COIL LOOP INSERT	12
CS4D01G	4" Ø CORRUGATED STEEL SLEEVE 1'-8" LONG, GALV.	2
WST9.00	PVC WATERSTOP 17'-7" LONG BASE SEAL TYPE 771 BY GREENSTREAK	1
MBRL2301G	RAPID LIFT, 22 TON, 15" LONG, GALV.	4
MBRL4502	RECESS PLUG, 22 TON	4
SLV3.00	3" I.D. RIGID PLASTIC SLEEVE	6
CS6D06G	6" Ø CORRUGATED STEEL PIPE, GALV., 2'-6" LONG (MAX.)	4
DSD101A31G	#5 DOWEL BAR SPLICER, 5'-6 3/8" LONG	7
DSD101A32G	#5 DOWEL BAR SPLICER, 5'-4" LONG	7
DSD101A33G	#5 DOWEL BAR SPLICER, 5'-2" LONG	3
DSD101A34G	#7 DOWEL BAR SPLICER, 5'-6 3/8" LONG	7
DSD101A35G	#7 DOWEL BAR SPLICER, 5'-4" LONG	7
DSD101A36G	#7 DOWEL BAR SPLICER, 5'-2" LONG	3
	VERMONT STATE MIX DESIGN	
	DO NOT CAST - SHIP TO JOBSITE	
DSD10101G	#5 DOWEL-IN, 4'-0 3/8" LONG	17
DSD10102G	#7 DOWEL-IN, 4'-0 3/8" LONG	17
P800G	1" X 1/4" X 1/4" GALVANIZED PLATE	6

NOTE: REBAR DIMENSIONS ARE OUT TO OUT.

NOTE: ALL ITEMS LISTED ABOVE ARE SUGGESTED PRODUCTS. FABRICATOR MAY SUBSTITUTE APPROVED EQUALS AS NECESSARY.

REVISION NO.	REVISION DATE
1	MARCH 09, 2011

**Hoyle, Tanner & Associates, Inc.**

125 College Street, 4th Floor Burlington, VT 05401  
Tel (802)860-1331 • Fax (802)860-6493 • www.hoyletanner.com  
© Copyright 2011 Hoyle, Tanner & Associates, Inc.

DRAWN BY: AFN DATE: FEBRUARY 2011  
CHECKED BY: LJS PROJECT NO: 122435UB



PRECAST CONCRETE PRODUCTS  
TEL: (802) 442-4418 FAX: (802) 442-4719

**CHESTER, VT**  
VT 103  
BRIDGE #9

PROJECT NO.: BRF 025-1 (37)

SHEET 15 OF 15

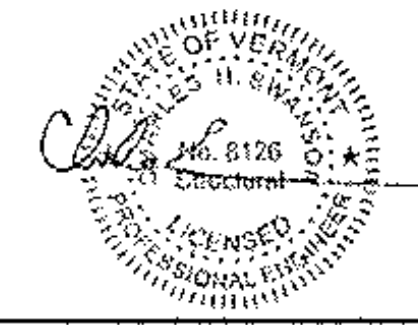
**MATERIAL SPECIFICATION**

CONCRETE:  
28 DAY STRENGTH: 5000 PSI  
RELEASE STRENGTH: 3000 PSI  
MILD REINFORCING: AASHTO M31, GRADE 60, EPOXY COATED

FINISHES  
ENDS: FORM FINISH  
TOP: RAKE FINISH, 1/2" AMPLITUDE  
BOTTOM: FORM FINISH  
SIDES: FORM FINISH

DUNNAGE:  
STORAGE: BELOW LIFT ANCHORS  
SHIPPING: BELOW LIFT ANCHORS

BAW-06  
TOTAL WEIGHT: 53,747 LBS  
CONC. YARDAGE: 13.27 CY



CONSTRUCTION SET  
FEBRUARY 18, 2011