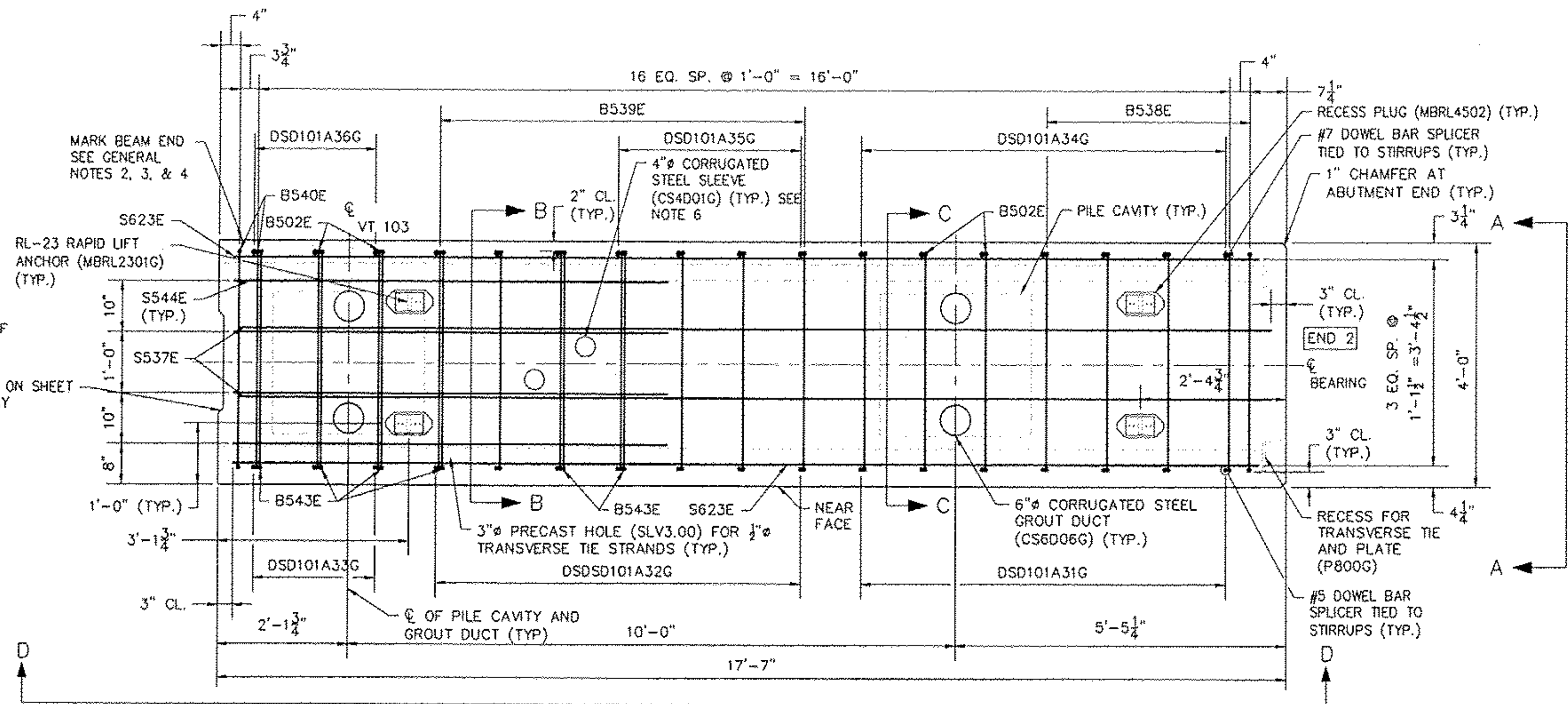
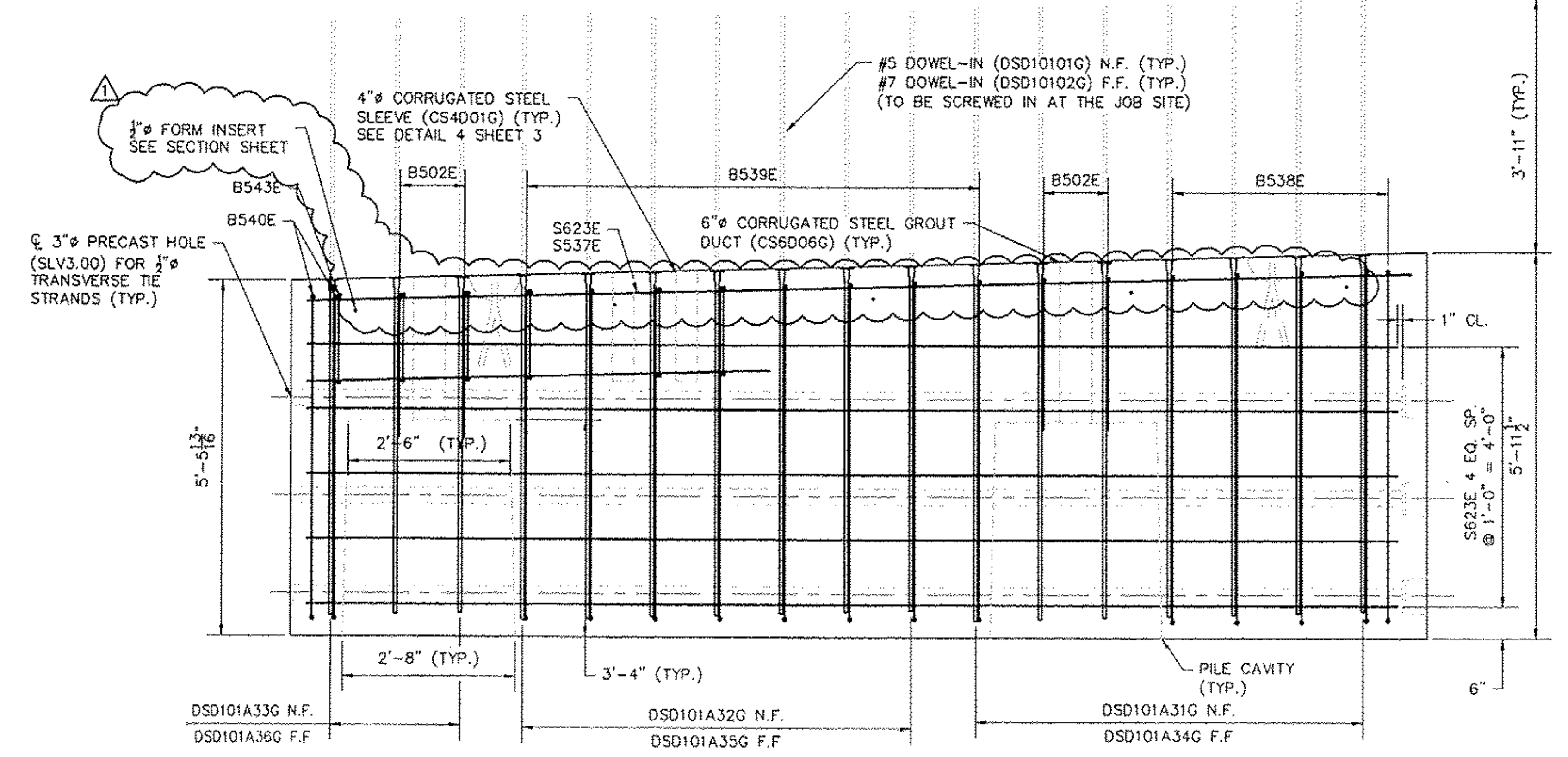




END 1  
MATCH-CAST END  
AGAINST END 2 OF  
BAW-05-005  
SEE DETAIL 1 ON SHEET  
3 FOR KEYWAY  
DIMENSIONS



④ BAW-06 REINF. LAYOUT PLAN  
SCALE: 3/8" = 1'-0"



⑤ BAW-06 SECTION D - ELEVATION  
SCALE: 3/8" = 1'-0"

- GENERAL NOTES:**
1. SEE PLAN SHEETS 1, 2, & 3 FOR PLAN AND DETAILS.
  2. ALL ABUTMENT PILE CAPS ARE LABELED AS FOLLOWS: PRODUCT TYPE-IDENTIFICATION NUMBER-SEQUENCE NUMBER.
  3. MARK BAW-06 "SOUTH END", FOLLOWED BY THE CORRESPONDING BEAM LABEL.
  4. FABRICATOR IS TO MARK ABUTMENT CAP END WITHIN CLOSE PROXIMITY TO THE NOTED END.
  5. LIGHT SANDBLAST MATCH-CAST END PRIOR TO SHIPMENT TO REMOVE ANY FORM OIL, GREASE, LAITANCE, ETC.
  6. SEE SHEET 2 FOR SLEEVE LOCATIONS. 4" SLEEVES ARE LOCATION CRITICAL.

RECEIVED  
OK'D BY JSS OK'D BY KSY  
MAR 11 2011  
RESUBMIT \_\_\_\_\_ APPROVED \_\_\_\_\_  
BY CPW DATE 3/28/11

REVISION NO.	REVISION DATE
1	MARCH 09, 2011

**Hoyle, Tanner & Associates, Inc.**

125 College Street, 4th Floor Burlington, VT 05401  
Tel (802)860-1331 • Fax (802)860-6499 • www.hoyletanner.com  
© Copyright 2011 Hoyle, Tanner & Associates, Inc.

DRAWN BY: APR DATE: FEBRUARY 2011  
CHECKED BY: CHS PROJECT NO.: 122435.00

PRECAST CONCRETE PRODUCTS  
TEL (802) 442-5110 FAX (802) 442-4719

**CHESTER, VT**  
VT 103  
BRIDGE #9

PROJECT NO.: BRF 025-1 (37)  
SHEET 14 OF 15

CONSTRUCTION SET  
FEBRUARY 18, 2011